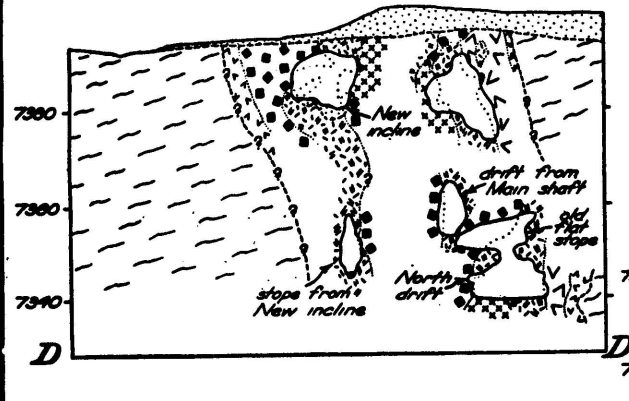
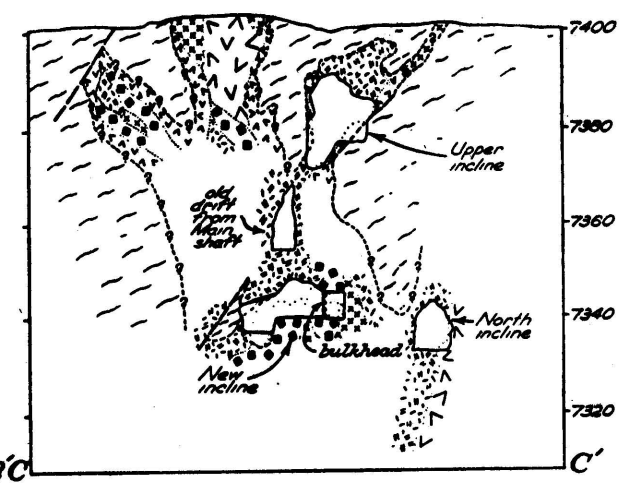
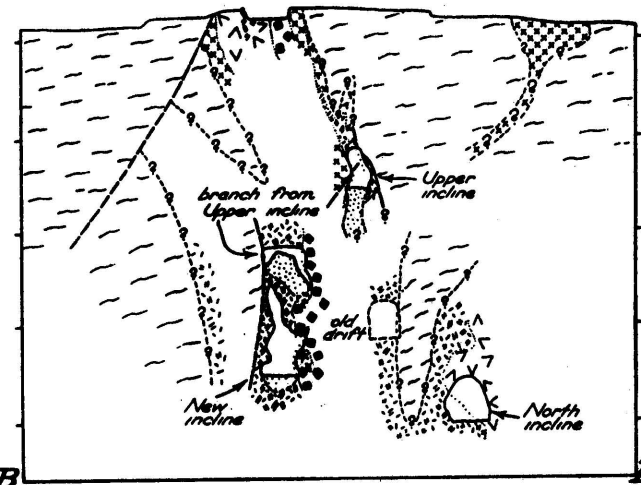
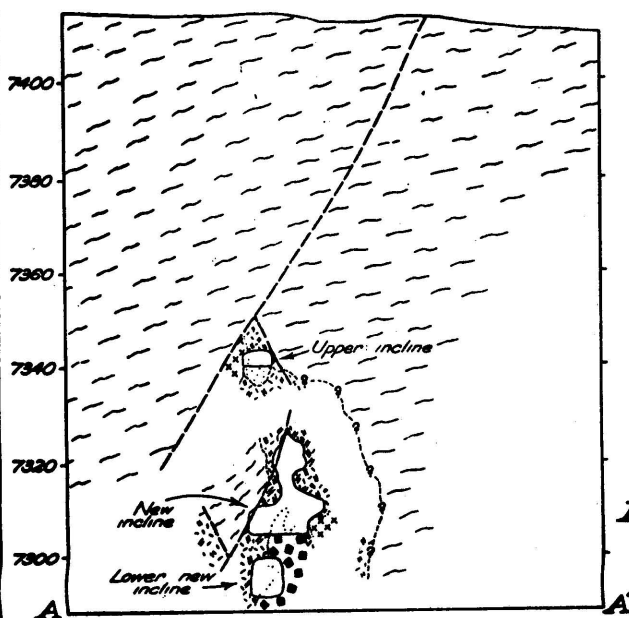


Composite plan of workings (outline of underground workings shown at 3 feet above floor)

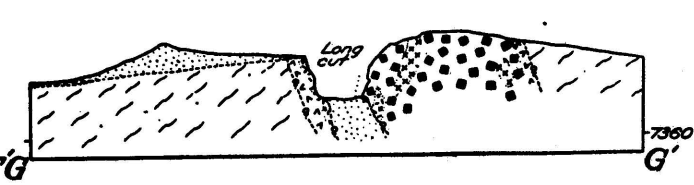
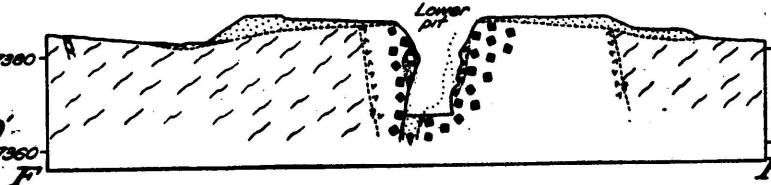
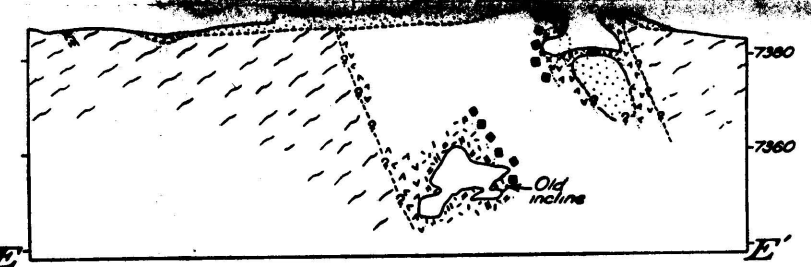
- Outline of New incline and principal connecting workings
- Outline of drift from base of 25-foot winze and of incline below New incline
- Outline of other workings and connecting workings
- Outline of Old incline
- Outline of other workings
- Outline of slope; general slope shown by arrow
- Approximate outline of inaccessible workings

EXPLANATION

- Alluvium
- Medium- to coarse-grained microcline-quartz pegmatite *locally rich in mica and albite*
- Very coarse-grained microcline-quartz pegmatite
- Blocky microcline
- Massive quartz
- Albite-rich pegmatite
- Mica concentration (shown as overprint on other patterns)
- Micaceous quartzite (pattern shown in section)
- Strike and dip of foliation, showing trend and pitch of linear element
- Joint or fault, showing dip; dashed where approximate
- Contact between pegmatite units
- Edge of cut or pit
- Shaft, open
- Shaft, caved or filled
- Head of winze



Sections along lines
A-A', B-B',
C-C', D-D',
E-E', F-F',
and G-G'



Mapped by R.H. Johns
and L.A. Wright
9/43 and 3, 11/44

Geologic map, plan, and sections of the Globe deposit, with composite plans of the mine workings.