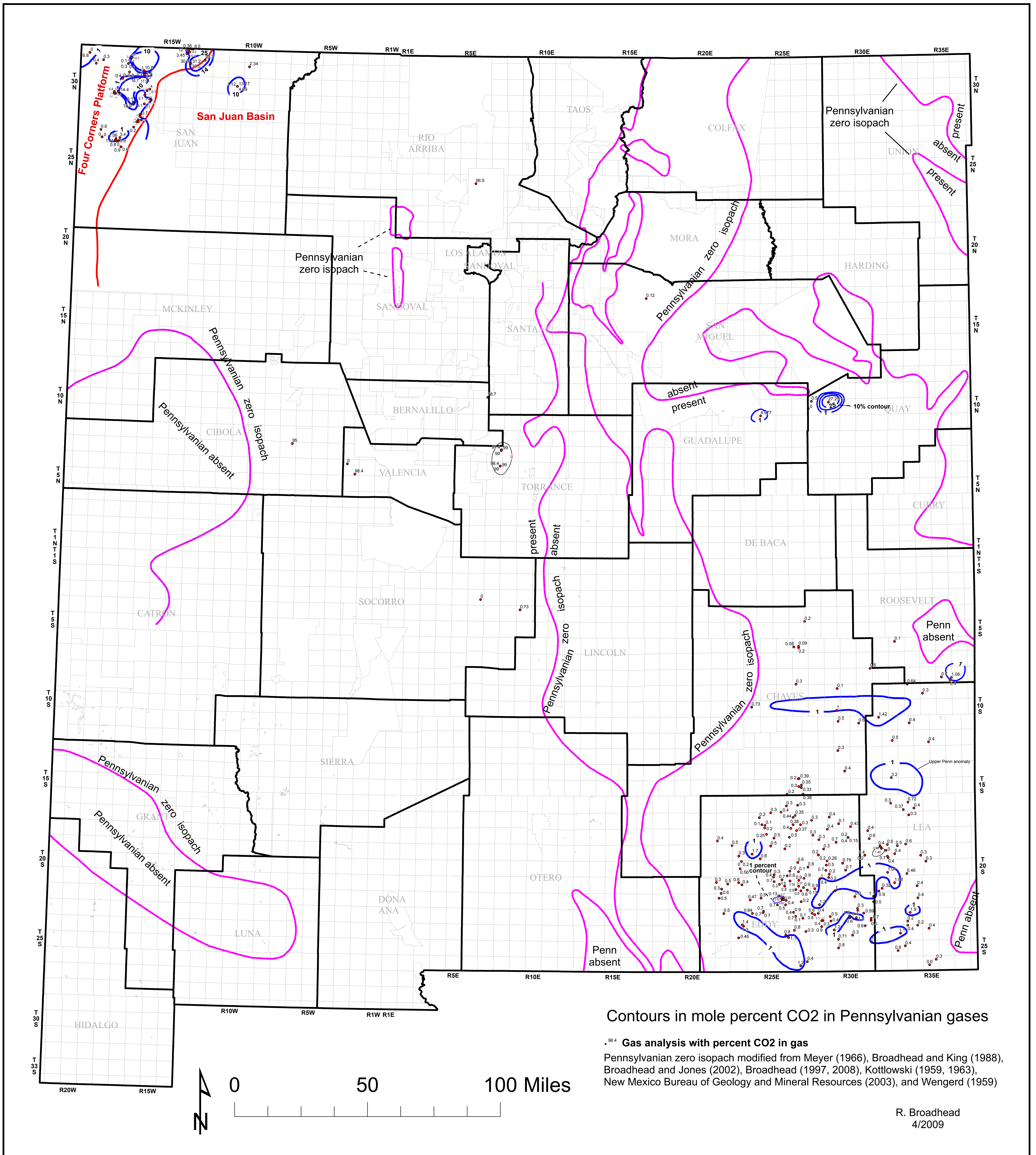


CO₂ content of Pennsylvanian gases



Contours in mole percent CO₂ in Pennsylvanian gases

^{08.4} Gas analysis with percent CO₂ in gas
 Pennsylvanian zero isopach modified from Meyer (1966), Broadhead and King (1988),
 Broadhead and Jones (2002), Broadhead (1997, 2008), Kottlowski (1959, 1963),
 New Mexico Bureau of Geology and Mineral Resources (2003), and Wengert (1959)

R. Broadhead
 4/2009