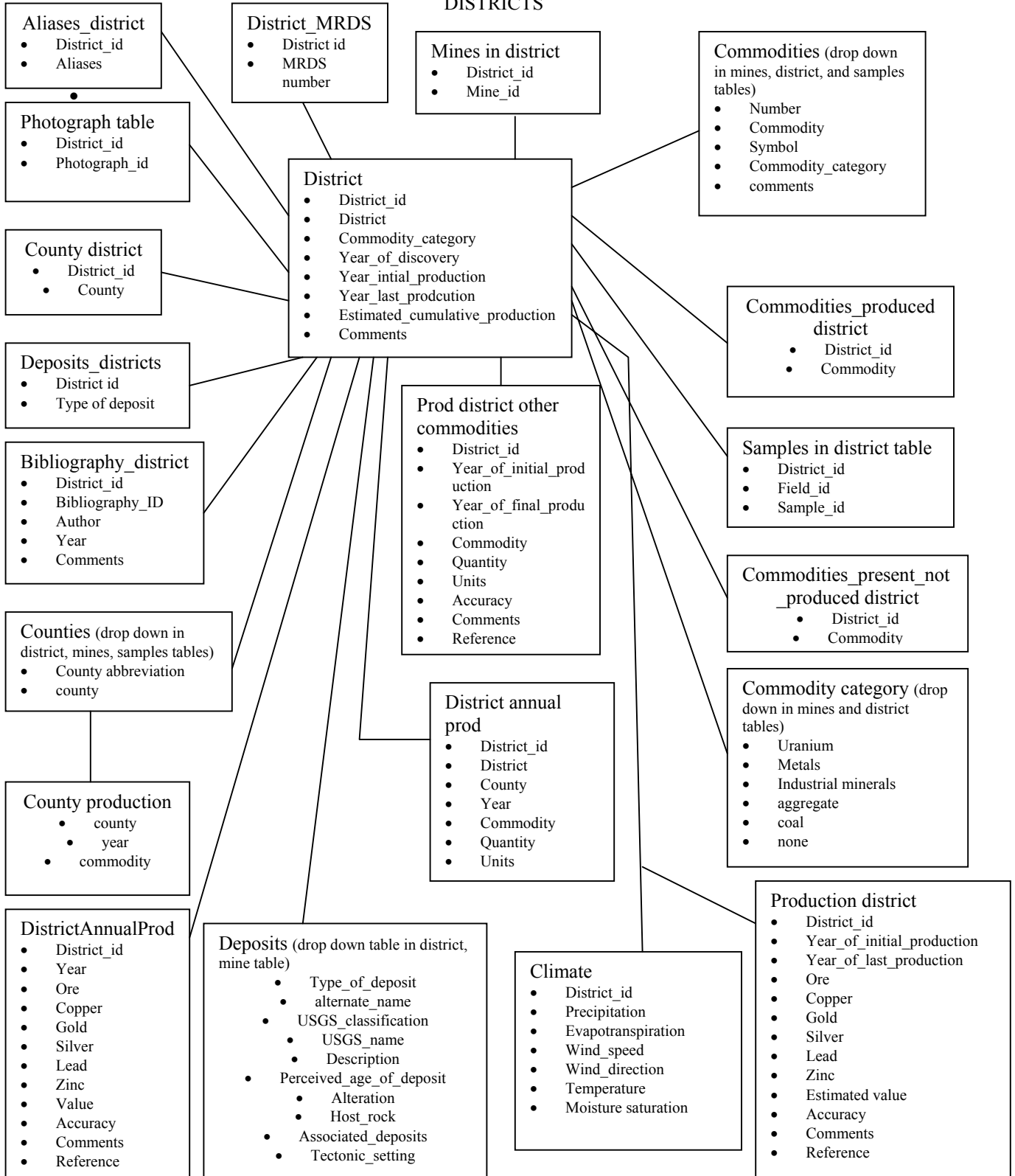


DESIGN OF THE NEW MEXICO MINES DATABASE  
NEW MEXICO MINES DATABASE

DISTRICTS



## MINES

- Samples in mines
- Mine\_id
  - Sample\_id

### Photographs table

- Mine\_id
- Photograph\_id

### Aliases mines

- Mine\_id
- Aliases

### Bibliography mines

- Mine\_id
- Bibliography\_ID
- Authors
- Year

### Mine features

- Mine\_id
- Feature\_id
- Type\_of\_feature
- Latitude
- Longitude
- UTM\_northing
- UTM\_easting
- UTM\_zone
- Type\_of\_feature
- Depth
- Length
- Width
- Elevation
- Description
- Hydrology
- Reclamation
- Mitigation\_status
- comments

### Commodities present not produced mines

- Mine\_id
- Commodity

### Commodities produced mines

- Mine\_id
- Commodity

### Significant deposits

- Mine\_id
- Is\_it\_significant
- Significant\_commodities
- Comments

## Mines

- Mine\_id
- County
- District\_id
- District
- Mine\_name
- Township
- Range
- Section
- Subsection
- Latitude
- Longitude
- Utm\_easting
- Utm\_northing
- Utm\_zone
- Location\_assurance
- Point\_of\_location
- Location\_comments
- Production\_category
- Commodity\_category
- Commodities\_produced
- Commodities\_present\_not\_produced
- Year\_of\_initial\_production
- Year\_of\_last\_production
- Comments\_on\_production
- Development
- Depth\_of\_workings
- Length\_of\_workings
- Disturbed\_area\_acres
- Operating\_status
- Production
- Mining\_methods
- Surface\_land\_status
- Minerals\_land\_status
- Ownership
- Primary\_company
- Access
- Mining\_history
- Cultural\_features
- Host\_formation
- Age\_host\_rock
- Age\_of\_mineralization
- Rock\_type
- Geology
- Mineralogy
- Size
- Alteration
- Type\_of\_deposit
- USGS\_quadrangle
- Elevation
- Method\_of\_obtaining\_elevation
- Land\_use
- Potential\_hazardous\_materials
- Evidence\_of\_potential\_acid\_drainage
- Hydrology
- Receiving\_stream
- Reclamation
- Mitigation\_status
- Sensitive\_environments
- Sample\_number
- MRDS\_number
- Other\_agency\_number
- Chemical\_analyses
- Comments
- Recommendations
- References
- Inspected\_by
- Date\_inspected
- Date\_of\_last\_modification

### Patented mines

- Mine\_id
- Mineral\_survey\_number
- Patent\_number
- Date\_patented
- Comments

### Production mines

- Mine\_id
- Year\_of\_initial\_production
- Year\_of\_last\_production
- Year
- Commodity
- Quantity
- Units
- Comments
- Reference

### Gravel data

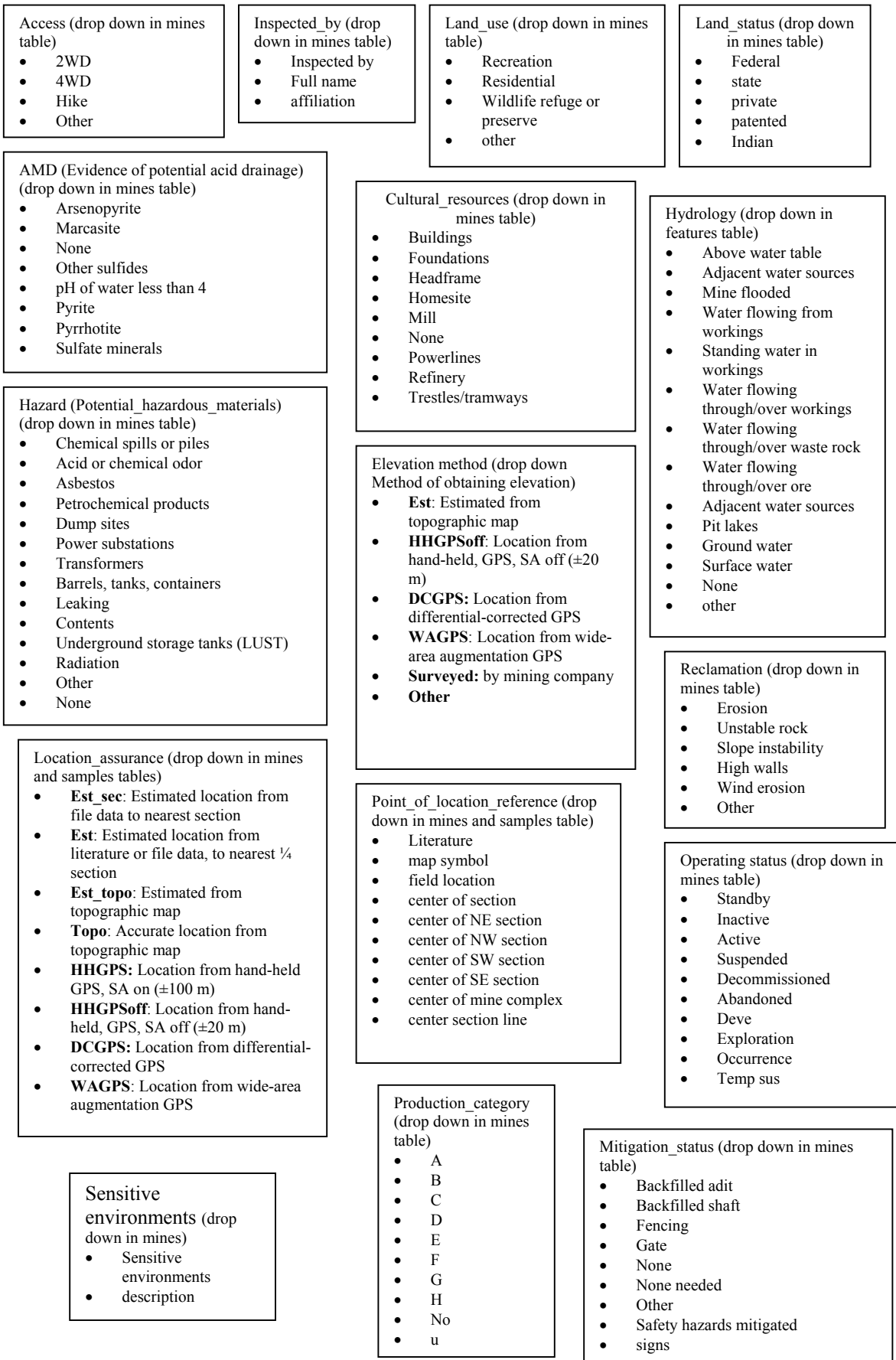
- Mine\_id
- Mine\_name
- Source\_Rock\_(gravel)
- Material\_Quality
- Material\_Thickness
- Underlying\_Material
- Vegetation
- Local\_Terrain
- Overburden\_Thickness
- Est\_Quantity\_(cubic\_yds)
- Los\_Angeles\_Wear
- Soundness\_Loss
- Average\_Max\_Size
- Percent\_Retained\_2\_inch\_Sieve
- Pit\_Avg\_percent\_Pass\_2\_inch\_Sieve
- Avg\_percent\_Passing\_1\_inch
- Avg\_percent\_Passing\_3\_4\_inch
- Avg\_percent\_Passing\_half\_inch
- Avg\_percent\_Passing\_No\_4
- Avg\_percent\_Passing\_No\_10
- Avg\_percent\_Passing\_No\_200
- Plasticity\_Index
- Comments
- Reference

### Resources/resources

- Mine\_id
- Year\_of\_resources/reserves
- Quantity\_of\_ore
- Grade
- Commodity
- Quantity\_of\_commodity
- Units
- Accuracy
- Comments
- Reference

### Ownership

- Mine\_id
- Owner\_id
- Ownership
- Owner\_category (land, claim, mining company)
- Year\_initial
- Year\_final
- Address
- City
- State
- Zipcode
- Phone\_number



**CHEMISTRY**

- Sample**
- Field\_id
  - Mine\_id
  - Feature\_id
  - District\_id
    - Project\_id
      - County
      - Media
  - Type\_of\_sample
  - Sample\_description
  - Method\_of\_sample\_collection
    - Latitude
    - Longitude
    - UTM\_easting
    - UTM\_northing
    - UTM\_zone
  - Location\_assurance
  - Point\_of\_location
  - USGS\_quadrangle
    - Elevation
  - Method\_of\_obtaining\_elevation
    - Depth
    - Well\_depth
  - Depth\_to\_first\_perforation
  - Water\_depth\_in\_well
  - Reason\_for\_sampling
    - Geology
  - Sample\_location
  - Location\_description\_of\_sample
    - Comments
    - Date\_collected
    - Inspected\_by
    - Reference

- Projects**
- Project\_id
  - Project\_name
  - Long\_name
  - Principle\_investigator
  - Other\_investigators
  - Project\_start\_date
  - Project\_end\_date
  - Purpose\_of\_project
  - Description\_of\_project
  - Geographic\_area
  - Funding\_source
  - Comments
  - References

- Analyses table**
- Sample\_id
  - Field\_id
  - Laboratory\_id
  - Laboratory\_number
  - Method\_id
  - Laboratory\_job\_number
  - Element (commodity)
  - Concentration
  - Unit
  - Detection limit symbol (<, > DL)

- Photograph**
- Field\_id
  - Photograph\_id

- Laboratory**
- Laboratory\_id
  - Laboratory\_name
  - Laboratory\_address
  - Laboratory\_town
  - Laboratory\_state
  - Laboratory\_country
  - Laboratory\_zipcode
  - Laboratory\_phone\_number

- Bibliography**
- Field\_id
  - Reference

- Sample preparation**
- Sample\_id
  - Field\_id
  - Preparation description
  - Prepped by

- Analytical method**
- Laboratory\_id
  - Method\_id
  - Analytical\_method
  - Commodities
  - Lower\_detection\_limit
  - Upper\_detection\_limit
  - Units
  - Instrument

- Media (Drop down in sample table)**
- Solid, liquid, air, biological

- Mineralogy**
- Field\_id
  - Mineral
  - Abundance
  - Unit
  - Method

- Type of sample (Drop down in sample table)**
- Type of sample
  - description

- Field measurements**
- Field\_id
  - Flow
  - pH
  - Conductivity
  - Alkalinity
  - Temperature

- Sample description (Drop down in sample table)**
- Sample description
  - description

# PHOTOGRAPHS

