



EXPLANATION



Alluvium
Recent silt, sand, and gravel situated in alluvial valleys and mountain meadows.



Gravel
Unconsolidated pebble to boulder gravel capping numerous terraces in the El Rito valley. Consists largely of metamorphic and volcanic rock types. Average thickness is about ten feet.

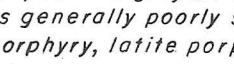
UNCONFORMITY



Santa Fe Formation
Reddish-brown to orange to grayish-brown, well-sorted siltstone to sandstone. Poorly consolidated except for thin beds where intertongued with tuffaceous conglomerate of the Los Piños Formation. Exposed thickness about five hundred feet.



Abiquiu Tuff **Los Piños Formation**
Ta - Gray-white to white, moderately well sorted tuff and tuffaceous conglomerate; containing thin, local masses of greenish-brown amygdaloidal basalt (Tb). Numerous rounded to subrounded clasts up to a foot or more in diameter occur scattered throughout the tuff, and concentrated in thin, discontinuous boulder beds. The clasts consist of fine-grained volcanic rock ranging in composition from rhyolite to andesite. Intertongues with Los Piños Formation.
Tb - Gray, grayish-pink and grayish-brown, tuffaceous conglomerate. It is generally poorly sorted with boulders of andesite porphyry, latite porphyry, rhyolite up to two feet in diameter, and largely unconsolidated. Well-cemented layers and lenses of sand and tuffaceous sand are present locally. Thickness is more than one thousand feet.



Ritito Conglomerate
Grayish-white, poorly sorted, unconsolidated conglomerate of Precambrian rock fragments, principally quartzite, grading upward and laterally into conglomerate of the Los Piños Formation, and downward into conglomerate of the El Rito Formation. Rare, thin, well-cemented zones are present where the conglomerate rests upon Precambrian quartzite. Average thickness about five hundred feet.



El Rito Formation
Well-cemented conglomerate of well-rounded gray-white quartzite clasts set in a brick-red matrix of hematitic quartz sand. Forms prominent cliff-like outcrops in Cañon de La Madera, Arroyo Seco, and along El Rito Creek. Average thickness two hundred feet.

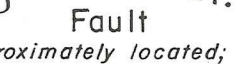
UNCONFORMITY



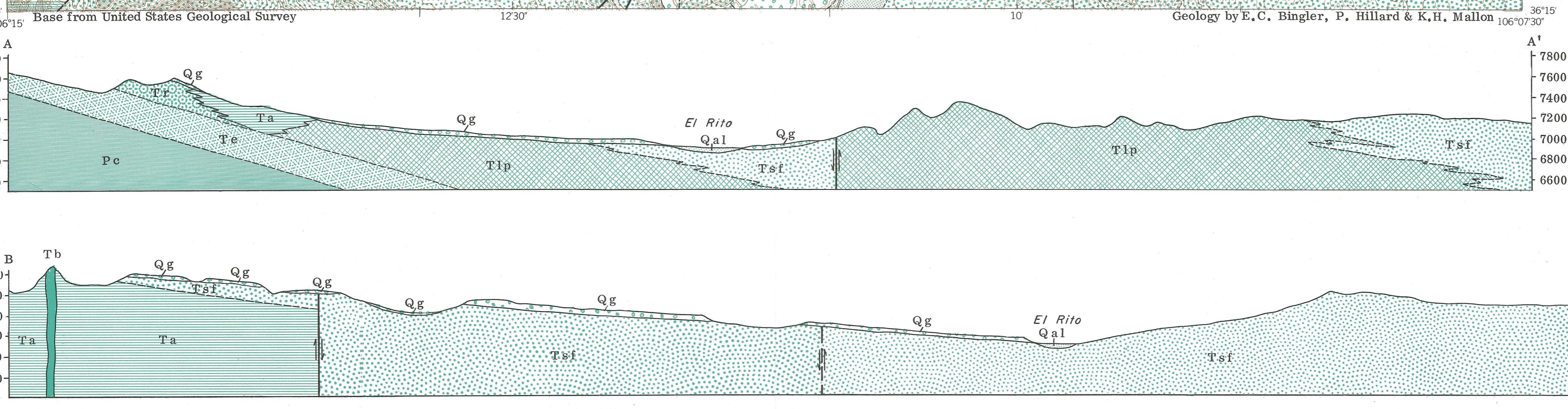
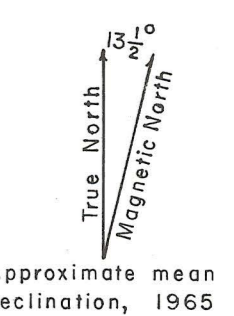
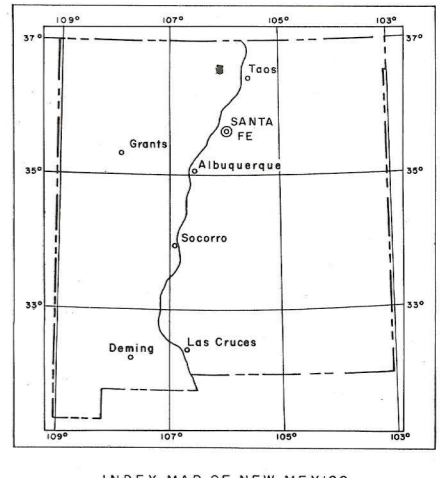
Cutler Formation
Reddish-brown sandstone and shale. Maximum exposed thickness two hundred feet.



Contact
Dashed where approximately located



Fault
Dashed where approximately located; dotted where buried. U, upthrown side; D, downthrown side.



RECONNAISSANCE GEOLOGIC MAP AND SECTIONS OF EL RITO SEVEN AND ONE HALF MINUTE QUADRANGLE, NEW MEXICO

