

Dr. Peter A. Scholle
Director and State Geologist

Dr. Paul W. Bauer
Geologic Mapping
Program Director

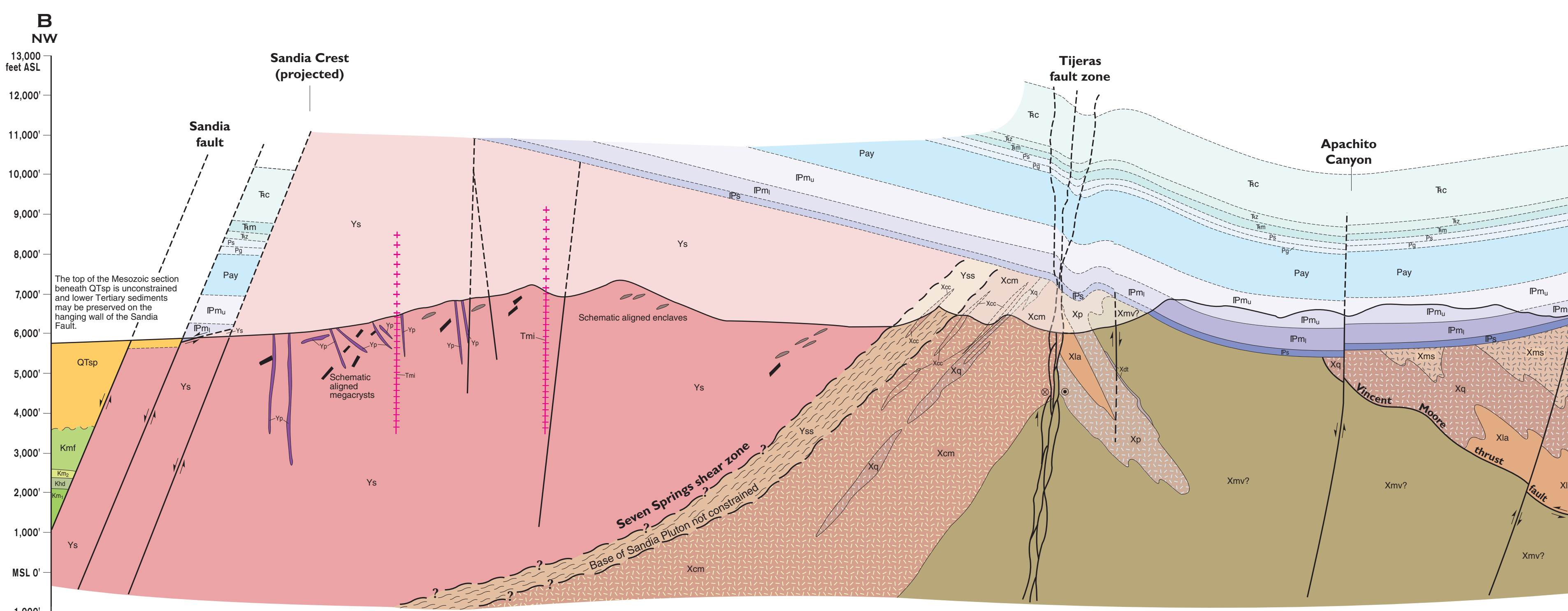
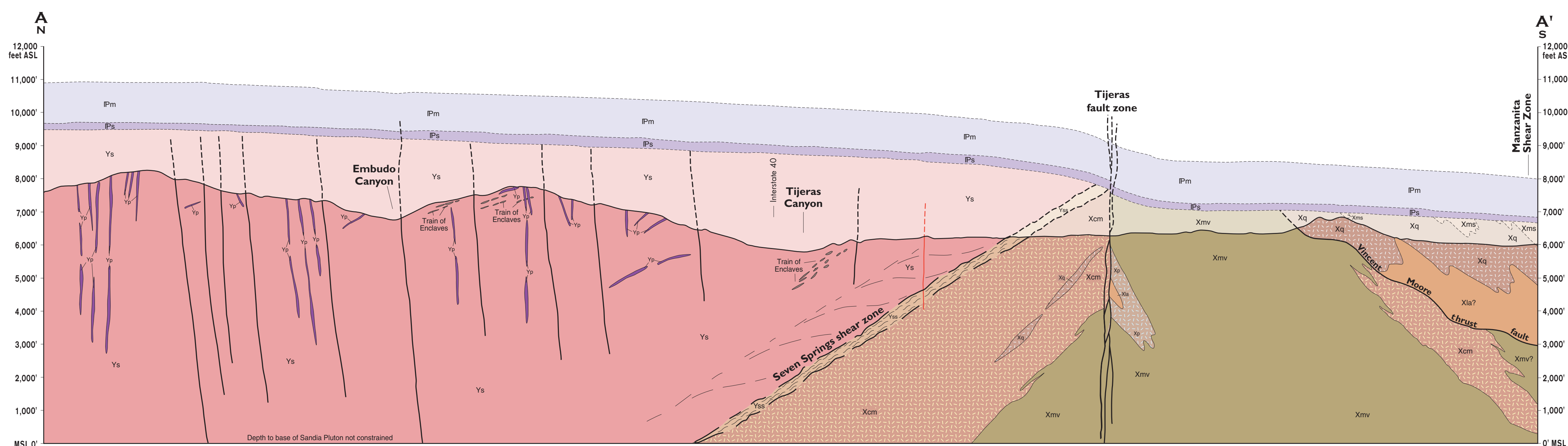
Geology of the Tijeras quadrangle, Bernalillo County, New Mexico

Plate II of II.
5 April 2000 Revision

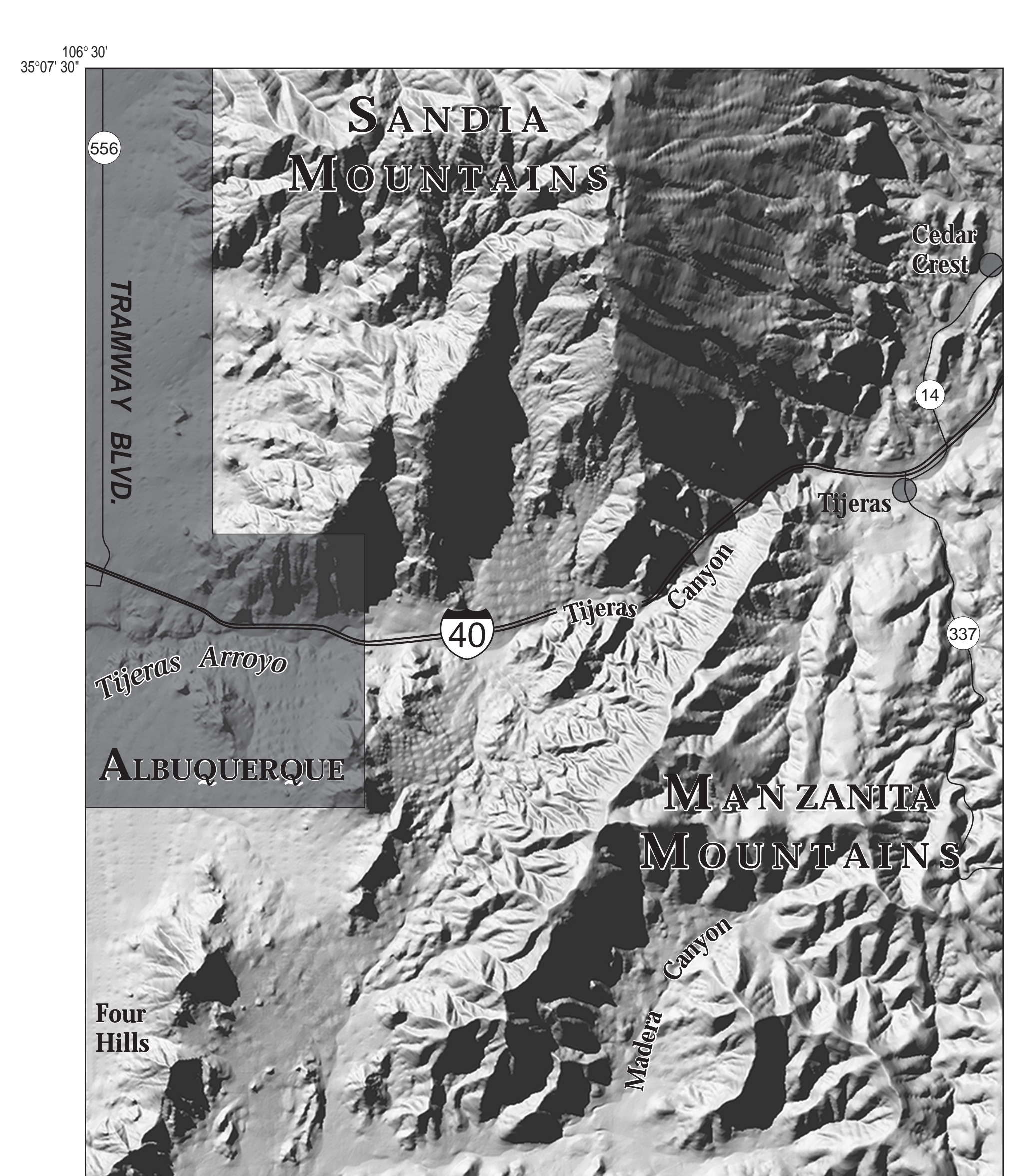
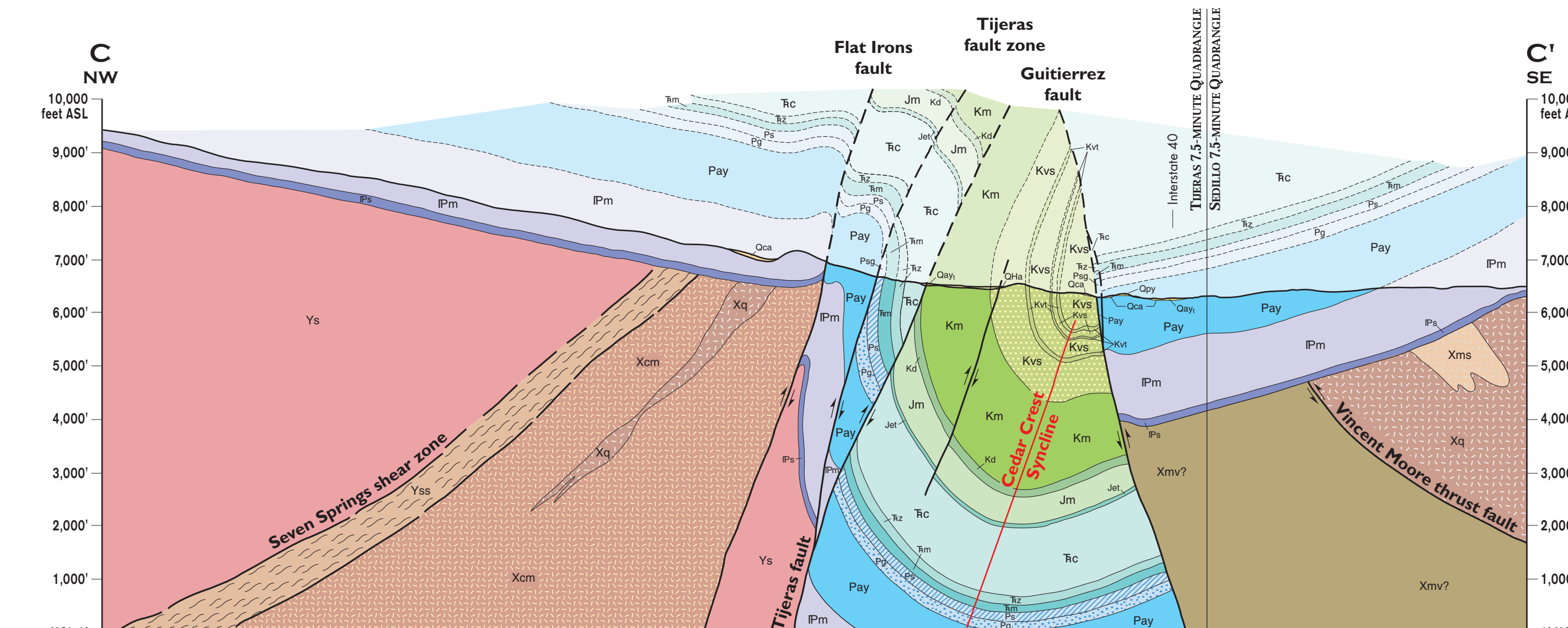
by
Karl E. Karlstrom¹, Sean D. Connell², Charles A. Ferguson³,
Adam S. Read⁴, Glenn R. Osburn⁵, Eric Kirby¹, John Abbott⁶,
Christopher Hitchcock⁷, Keith Kelson⁷, Jay Noller⁷,
Thomas Sawyer⁷, Steven Ralsler⁸, David W. Love¹,
Matthew Nyman¹, and Paul W. Bauer⁴

¹Department of Earth and Planetary Sciences, University of New Mexico, Albuquerque, NM 87131
²New Mexico Bureau of Mines and Mineral Resources, Albuquerque, NM 87106
³Arizona Geological Survey, 416 W. Congress, #100, Tucson, AZ 85701
⁴New Mexico Bureau of Mines and Mineral Resources, Socorro, NM 87801
⁵Department of Earth and Planetary Sciences, Washington University, St. Louis, MO 63130
⁶Department of Earth and Environmental Science,
New Mexico Institute of Mining and Technology, Socorro, NM 87801
⁷William Lettis & Associates, Inc., 1777 Botelho Dr., Suite 262, Walnut Creek, CA 94596

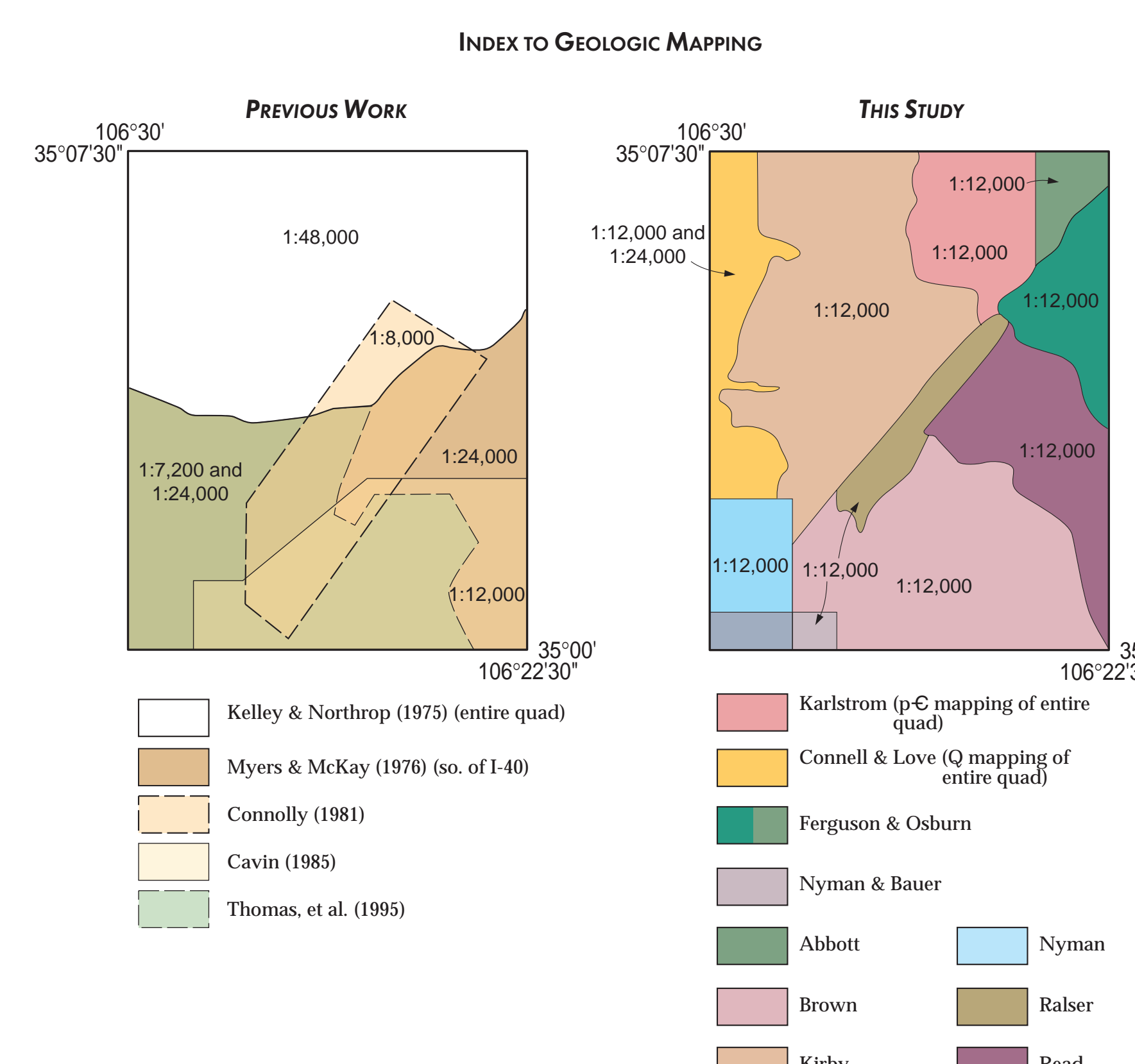
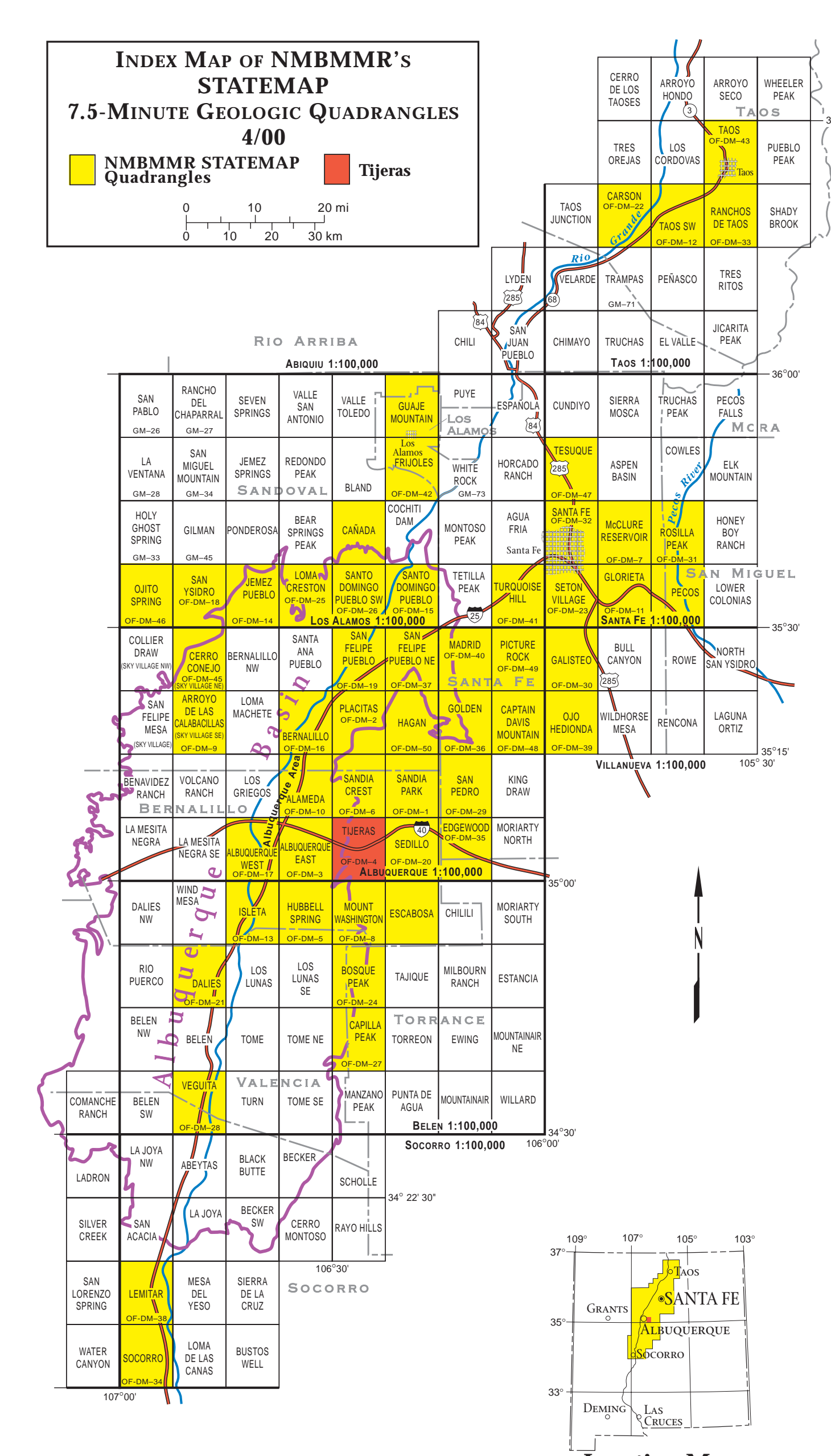
GEOLOGIC CROSS SECTIONS



Cross sections are constructed based upon the interpretations of the authors made from geologic mapping, and available geophysical and subsurface (ditillals) data. Cross sections should be used as an aid to understanding the general geologic framework of the map area, and not be the sole source of information for use in locating or designing wells, buildings, roads, or other man-made structures.



Physiography of the Tijeras area based upon 10-m USGS DEM data.



REFERENCES

Armstrong, A. K., 1967. Biostratigraphy and carbonate facies of the Mississippian Arroyo Peloso Formation, north-central New Mexico. *New Mexico Bureau of Mines & Mineral Resources Memo* 20, 81 p.

Armstrong, A. K. and Murrell, B. L., 1974. Biostratigraphy of the Arroyo Peloso Group, Lower Carboniferous (Mississippian), North-Central New Mexico. *New Mexico Geological Society, 25th Field Conference Guidebook*, p. 145-158.

Brookins, D. G., 1982. Radiometric ages of Precambrian rocks from central New Mexico. *New Mexico Geological Society Guidebook* 33, p. 187-189.

Brown, C. L., Karlstrom, K. E., Heizer, M., and Ulrich, D., 1999. Paleoproterozoic deformation, metamorphism, and ⁴⁰Ar/³⁹Ar thermal history of the 1.6 Ga Manzanita pluton. *New Mexico Geological Society, 50th Field Conference Guidebook*, p. 255-268.

Cavin, W. J., 1985. Precambrian geology of the northern Manzanita Mountains, Bernalillo County, New Mexico. [M.S. thesis], University of New Mexico, Albuquerque, NM, 144 p.

Connell, S. D., 1995. Quaternary geology and geomorphology of the Sandia Mountains piedmont, Bernalillo and Sandoval Counties, central New Mexico. [M.S. thesis] Riverside, University of California, 390 p., 3 plates.

Connell, S. D., 1996. Quaternary geology and geomorphology of the Sandia Mountains piedmont, Bernalillo and Sandoval Counties, central New Mexico. *New Mexico Bureau of Mines and Mineral Resources Open-File Report* 425, 414 p., 3 plates [open-file release of Connell, 1995].

Connolly, J. R., 1981. Geology of the Precambrian rocks of Tijeras Canyon, Bernalillo County, New Mexico. [M.S. thesis], University of New Mexico, Albuquerque, NM, 147 p.

Ferguson, C. A., Timmons, J. M., Prazmala, E. J., Karlstrom, K. E., Osburn, G. R., Bauer, P. W., 1996. Geology of the Sandia Park 7.5-minute quadrangle, Bernalillo and Sandoval Counties, New Mexico. *New Mexico Bureau of Mines and Mineral Resources Open-File Digital Geologic Map OFDM 8*, scale 1:24,000.

Karlstrom, K. E., 1999. Southern margin of the Sandia pluton and the "Cibola problem" - misappreciated in *New Mexico Geological Society, 50th Field Conference Guidebook*, p. 30.

Karlstrom, K. E., Chamberlain, R. M., Connell, S. D., Brown, C., Nyman, M., Cavin, W. J., Pancham, M. A., Cook, C., Swelling, J., 1997a. Geology of the Mosier-Huntington 7.5-minute quadrangle, Bernalillo and Valencia Counties, New Mexico. *New Mexico Bureau of Mines and Mineral Resources, Open-File Digital Geologic Map OFDM 8*, scale 1:24,000.

Karlstrom, K. E., Dalrymple, R. D., Grambling, J. A., 1997b. ⁴⁰Ar/³⁹Ar evidence for 1.4 Ga regional metamorphism in New Mexico: implications for thermal evolution of the southwestern USA. *Journal of Geology*, v. 105, p. 205-223.

Kelley, V. C., 1977. Geology of the Albuquerque basin, New Mexico. *New Mexico Bureau of Mines and Mineral Resources Memo* 33, 60p.

Kelley, V. C., and Northrop, S. A., 1975. Geology of the Sandia Mountains and vicinity. *New Mexico Bureau of Mines and Mineral Resources Memo* 29, 136p.

Kelley, S. A., Chapoy, C. E., and Corrigan, J., 1992. Late Mesozoic to Cenozoic cooling histories of the flanks of the northern and central Rio Grande. *New Mexico Bureau of Mines and Mineral Resources Open-File Digital Geologic Map OFDM 14*, scale 1:24,000.

Kirby, E., Karlstrom, K. E., and Anderson, O. J., 1995. Tectonic setting of the Sandia pluton: An orogenic 1.4 Ga granite in New Mexico. *Tectonics*, v. 14, p. 183-201.

Lambert, P. W., 1968. Quaternary stratigraphy of the Albuquerque area, New Mexico. [Ph.D. dissertation], Albuquerque, University of New Mexico, 329p.

Lucas, S. G., Williamson, T. E., and Sobolev, J., 1993. Riparian tectonics, paleogeography, and mammalian biogeography, Tijeras Arroyo, Albuquerque area, New Mexico. *New Mexico Geology*, v. 13, n. 1, p. 1-8.

Lucas, S. G., Anderson, O. J., and Piggan, C., 1995. Jurassic Stratigraphy in the Hagan Basin, North-Central New Mexico. *New Mexico Geological Society Guidebook*, 46th Field Conference Guidebook, p. 247-253.

Lucas, S. G., and Anderson, O. J., 1997. The Jurassic San Rafael Group, Four Corners region, in: *New Mexico Geological Society, 48th Field Conference Guidebook*, p. 113-122.

Macchettie, M. N., 1978. Geologic map of the San Antonio Quadrangle, Socorro County, New Mexico. *U.S. Geological Survey, Geologic Quadrangle Map* GG 7415, scale 1:24,000.

Myers, D. A., and McKay, E. J., 1976. Geologic map of the north of the Manzanita Mountains, Tijeras and Sello quadrangles, Bernalillo County, New Mexico. *U.S. Geological Survey Miscellaneous Investigations Series*, 1976, scale 1:24,000.

Myers, B. L., Suggs, B. B., Kaufman, E. G., Caldwell, W. G. E., Kaufman, E. G., 1993. Trace fossil distribution patterns in Carboniferous facies of the Western Interior Basin, North America, in: *Evolution of the Western Interior Basin, Special Paper - Geological Association of Canada*, v. 39, p. 383-420.

Pancham, M. A., 1981. Precambrian geology of the Hill Canyon area, Manzanita Mountains, New Mexico. [M.S. thesis], University of New Mexico, Albuquerque, NM, 109 p.

Richo, M. G., 1992. Structure and stratigraphy of the Manzanita and Hagan basin area, Sandoval County, New Mexico. [M.S. thesis], Albuquerque, University of New Mexico.

Read, A. S., Allen, S. D., Osburn, G. R., Ferguson, C. A., and Chamberlain, R., 1998. The Geology of the Sello quadrangle, Bernalillo County, New Mexico. *New Mexico Bureau of Mines and Mineral Resources, Open-File Digital Geologic Map OFDM 20*, scale 1:24,000.

Read, A. S., Karlstrom, K. E., fig. B., 1999. Mississippian Del Padre Sandstone or Proterozoic Quartzite? *New Mexico Geological Society, 50th Field Conference Guidebook*, p. 41-43.

Richy, S. E., 1991. Construction, lithologic, and geophysical data from monitoring wells in Albuquerque, Bernalillo County, New Mexico. *U.S. Geological Survey, Open-File Report* 90-578, 83 p.

Smith, L. N., Bullard, T. E., and Wells, S. G., 1982. Quaternary geology and geomorphology of Tijeras Canyon, New Mexico. *New Mexico Geological Society, 33rd Field Conference Guidebook*, p. 5-8.

Stearns, C. E., 1953. Tertiary geology of the Gallegos-Tanque area, New Mexico. *Geological Society of America Bulletin*, v. 64, p. 459-508.

Steiger, R. H., and Wasserburg, G. J., 1966. Systematics in the Pb²⁰⁸-Th²³² and Pb²⁰⁷-U²³⁵ systems. *Journal of Geophysical Research*, 71, p. 4505-4510.

Szabo, E., 1953. Stratigraphy and paleontology of the Carboniferous rocks of the Cadiz Canyon area, Manzanita Mountains, Bernalillo County, New Mexico. [M.S. thesis], University of New Mexico, 137 p.

Thomas, E., Van Hart, D., McKinick, S., Gillette, J., Hitchcock, C., Kelson, K., Noller, J., and Sawyer, T., 1995. Conceptual biological model of the Sandia National Laboratories and Kinland Air Force Base. Technical Report. Site-Wide Hydrogeologic Characterization Project Organization 7584, Environmental Restoration Program, Prepared by GRAM, Incorporated, Albuquerque, New Mexico, and William Lettis and Associates, Oakland, California, Section 2 and Appendix D.

Tilton, G. R., and Grunfeldt, M. H., 1968. Uranium-lead ages, *Science*, v. 159, p. 1458-1461.