



Dr. Peter A. Scholle, Director and State Geologist; Dr. Paul W. Bauer, Geologic Mapping Program Director

UNIT DESCRIPTIONS

CENOZOIC DEPOSITS

Neogene (Quaternary and Tertiary) System

Collied, sandstone, and calcareous deposits

The surficial deposits derived from wind and water erosion processes, or extension areas derived by open...

Artificial fill (Aa) - Deposited fill and areas affected by human disturbance. Locally present where...

Caliche and caliche (Ca) - Fully consolidated, gray to reddish-brown, calcareous, locally cemented...

Terraced and spring deposits (T) - Terraced deposits (T) - Terraced deposits (T) - Terraced deposits (T)...

Streamline alluvium

Typically consists of well-sorted and well-sorted, fine to medium-grained sand and gravel with minor...

Younger stream alluvium, undivided (Y) - Fully consolidated, light to medium-colored, fine to medium-grained...

Younger stream alluvium, undivided (Y) - Fully consolidated, light to medium-colored, fine to medium-grained...

Older alluvial (O) - Fully consolidated, light to medium-colored, fine to medium-grained...

Well cemented stream alluvium, undivided (W) - Indurated, reddish-brown to reddish-orange...

East-western piedmont slope deposits

Typically consists of moderately sorted and well-sorted, fine to medium-grained sand and gravel with...

Younger east-western piedmont alluvium (Y) - Fully consolidated, light to medium-colored, fine to medium-grained...

Middle east-western piedmont alluvium, undivided (M) - Fully consolidated, light to medium-colored, fine to medium-grained...

Older alluvial (O) - Fully consolidated, light to medium-colored, fine to medium-grained...

Well cemented stream alluvium, undivided (W) - Indurated, reddish-brown to reddish-orange...

East-western piedmont slope deposits

Typically consists of moderately sorted and well-sorted, fine to medium-grained sand and gravel with...

Younger east-western piedmont alluvium (Y) - Fully consolidated, light to medium-colored, fine to medium-grained...

Middle east-western piedmont alluvium, undivided (M) - Fully consolidated, light to medium-colored, fine to medium-grained...

Older alluvial (O) - Fully consolidated, light to medium-colored, fine to medium-grained...

Well cemented stream alluvium, undivided (W) - Indurated, reddish-brown to reddish-orange...

East-western piedmont slope deposits

Typically consists of moderately sorted and well-sorted, fine to medium-grained sand and gravel with...

Younger east-western piedmont alluvium (Y) - Fully consolidated, light to medium-colored, fine to medium-grained...

Middle east-western piedmont alluvium, undivided (M) - Fully consolidated, light to medium-colored, fine to medium-grained...

Older alluvial (O) - Fully consolidated, light to medium-colored, fine to medium-grained...

Well cemented stream alluvium, undivided (W) - Indurated, reddish-brown to reddish-orange...

East-western piedmont slope deposits

Typically consists of moderately sorted and well-sorted, fine to medium-grained sand and gravel with...

Younger east-western piedmont alluvium (Y) - Fully consolidated, light to medium-colored, fine to medium-grained...

Middle east-western piedmont alluvium, undivided (M) - Fully consolidated, light to medium-colored, fine to medium-grained...

Older alluvial (O) - Fully consolidated, light to medium-colored, fine to medium-grained...

Well cemented stream alluvium, undivided (W) - Indurated, reddish-brown to reddish-orange...

East-western piedmont slope deposits

Typically consists of moderately sorted and well-sorted, fine to medium-grained sand and gravel with...

Younger east-western piedmont alluvium (Y) - Fully consolidated, light to medium-colored, fine to medium-grained...

Middle east-western piedmont alluvium, undivided (M) - Fully consolidated, light to medium-colored, fine to medium-grained...

Older alluvial (O) - Fully consolidated, light to medium-colored, fine to medium-grained...

Well cemented stream alluvium, undivided (W) - Indurated, reddish-brown to reddish-orange...

East-western piedmont slope deposits

Typically consists of moderately sorted and well-sorted, fine to medium-grained sand and gravel with...

Younger east-western piedmont alluvium (Y) - Fully consolidated, light to medium-colored, fine to medium-grained...

Middle east-western piedmont alluvium, undivided (M) - Fully consolidated, light to medium-colored, fine to medium-grained...

Older alluvial (O) - Fully consolidated, light to medium-colored, fine to medium-grained...

Well cemented stream alluvium, undivided (W) - Indurated, reddish-brown to reddish-orange...

East-western piedmont slope deposits

Typically consists of moderately sorted and well-sorted, fine to medium-grained sand and gravel with...

Younger east-western piedmont alluvium (Y) - Fully consolidated, light to medium-colored, fine to medium-grained...

Middle east-western piedmont alluvium, undivided (M) - Fully consolidated, light to medium-colored, fine to medium-grained...

Older alluvial (O) - Fully consolidated, light to medium-colored, fine to medium-grained...

Well cemented stream alluvium, undivided (W) - Indurated, reddish-brown to reddish-orange...

East-western piedmont slope deposits

Typically consists of moderately sorted and well-sorted, fine to medium-grained sand and gravel with...

Younger east-western piedmont alluvium (Y) - Fully consolidated, light to medium-colored, fine to medium-grained...

Middle east-western piedmont alluvium, undivided (M) - Fully consolidated, light to medium-colored, fine to medium-grained...

Older alluvial (O) - Fully consolidated, light to medium-colored, fine to medium-grained...

Well cemented stream alluvium, undivided (W) - Indurated, reddish-brown to reddish-orange...

East-western piedmont slope deposits

Typically consists of moderately sorted and well-sorted, fine to medium-grained sand and gravel with...

Younger east-western piedmont alluvium (Y) - Fully consolidated, light to medium-colored, fine to medium-grained...

Middle east-western piedmont alluvium, undivided (M) - Fully consolidated, light to medium-colored, fine to medium-grained...

Older alluvial (O) - Fully consolidated, light to medium-colored, fine to medium-grained...

Well cemented stream alluvium, undivided (W) - Indurated, reddish-brown to reddish-orange...

East-western piedmont slope deposits

Typically consists of moderately sorted and well-sorted, fine to medium-grained sand and gravel with...

Younger east-western piedmont alluvium (Y) - Fully consolidated, light to medium-colored, fine to medium-grained...

Middle east-western piedmont alluvium, undivided (M) - Fully consolidated, light to medium-colored, fine to medium-grained...

Older alluvial (O) - Fully consolidated, light to medium-colored, fine to medium-grained...

Well cemented stream alluvium, undivided (W) - Indurated, reddish-brown to reddish-orange...

East-western piedmont slope deposits

Typically consists of moderately sorted and well-sorted, fine to medium-grained sand and gravel with...

Younger east-western piedmont alluvium (Y) - Fully consolidated, light to medium-colored, fine to medium-grained...

Middle east-western piedmont alluvium, undivided (M) - Fully consolidated, light to medium-colored, fine to medium-grained...

Older alluvial (O) - Fully consolidated, light to medium-colored, fine to medium-grained...

Well cemented stream alluvium, undivided (W) - Indurated, reddish-brown to reddish-orange...

East-western piedmont slope deposits

Typically consists of moderately sorted and well-sorted, fine to medium-grained sand and gravel with...

Younger east-western piedmont alluvium (Y) - Fully consolidated, light to medium-colored, fine to medium-grained...

Middle east-western piedmont alluvium, undivided (M) - Fully consolidated, light to medium-colored, fine to medium-grained...

Older alluvial (O) - Fully consolidated, light to medium-colored, fine to medium-grained...

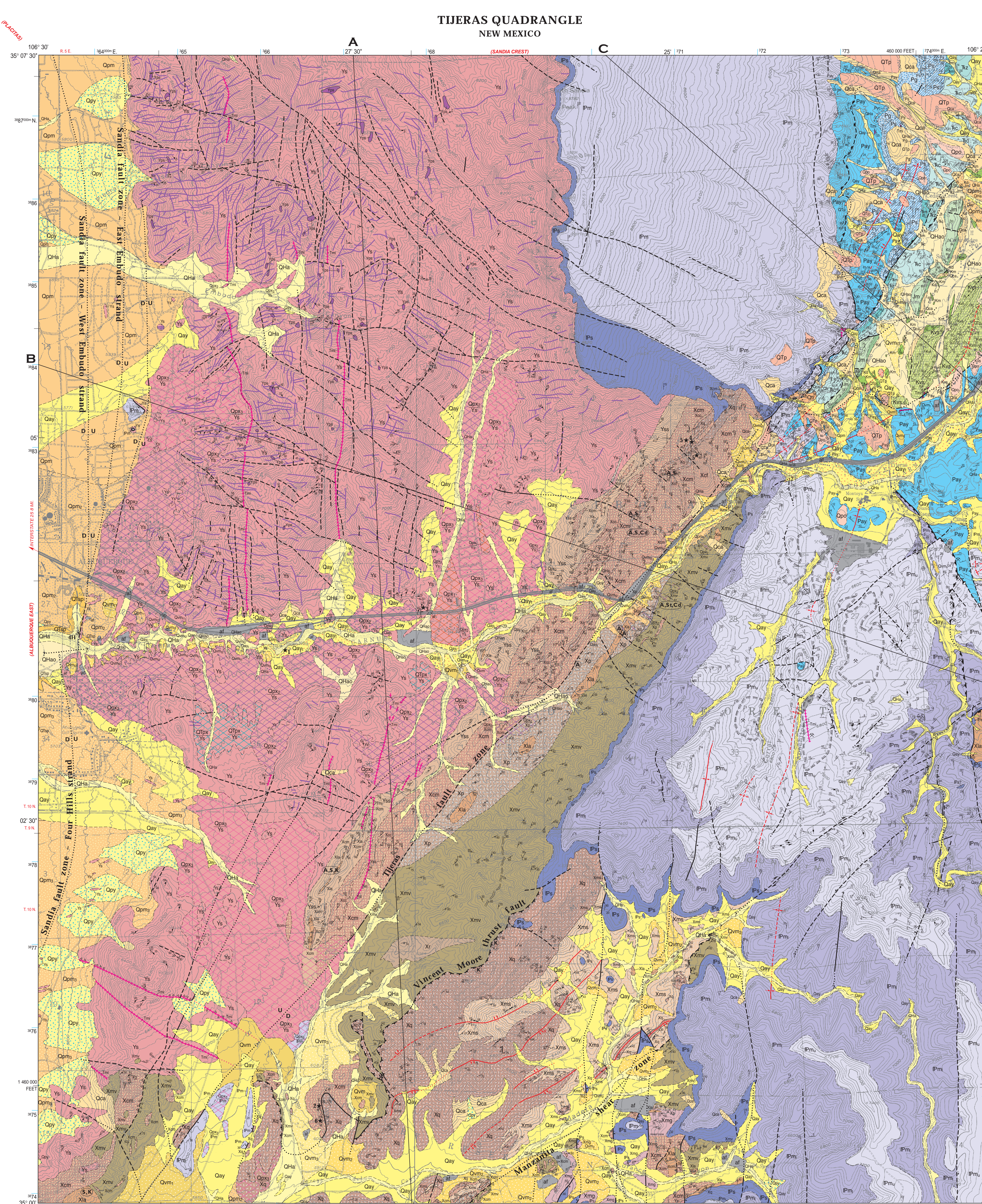
Well cemented stream alluvium, undivided (W) - Indurated, reddish-brown to reddish-orange...

East-western piedmont slope deposits

Typically consists of moderately sorted and well-sorted, fine to medium-grained sand and gravel with...

Younger east-western piedmont alluvium (Y) - Fully consolidated, light to medium-colored, fine to medium-grained...

Middle east-western piedmont alluvium, undivided (M) - Fully consolidated, light to medium-colored, fine to medium-grained...



Geology of Tijeras quadrangle, Bernalillo County, New Mexico. June 1, 1984. 28 February 2000 Revision. by Karl E. Rasmussen, Sean D. Connell, Charles A. Fergonson, Adam S. Bradt, Glenn B. Colburn, Eric R. Calkins, Robert C. Christopher, III, et al.

UNIT DESCRIPTIONS (continued)
Paleozoic Rocks
Upper Permian
San Andres and Clinton Formations - The upper two lithostratigraphic units of the Permian...

Mesozoic Rocks
Cretaceous
Mesa Group, undivided (M) - A complex of fine, magnesian, micaceous, and fossiliferous shales...

Upper Permian
San Andres and Clinton Formations - The upper two lithostratigraphic units of the Permian...

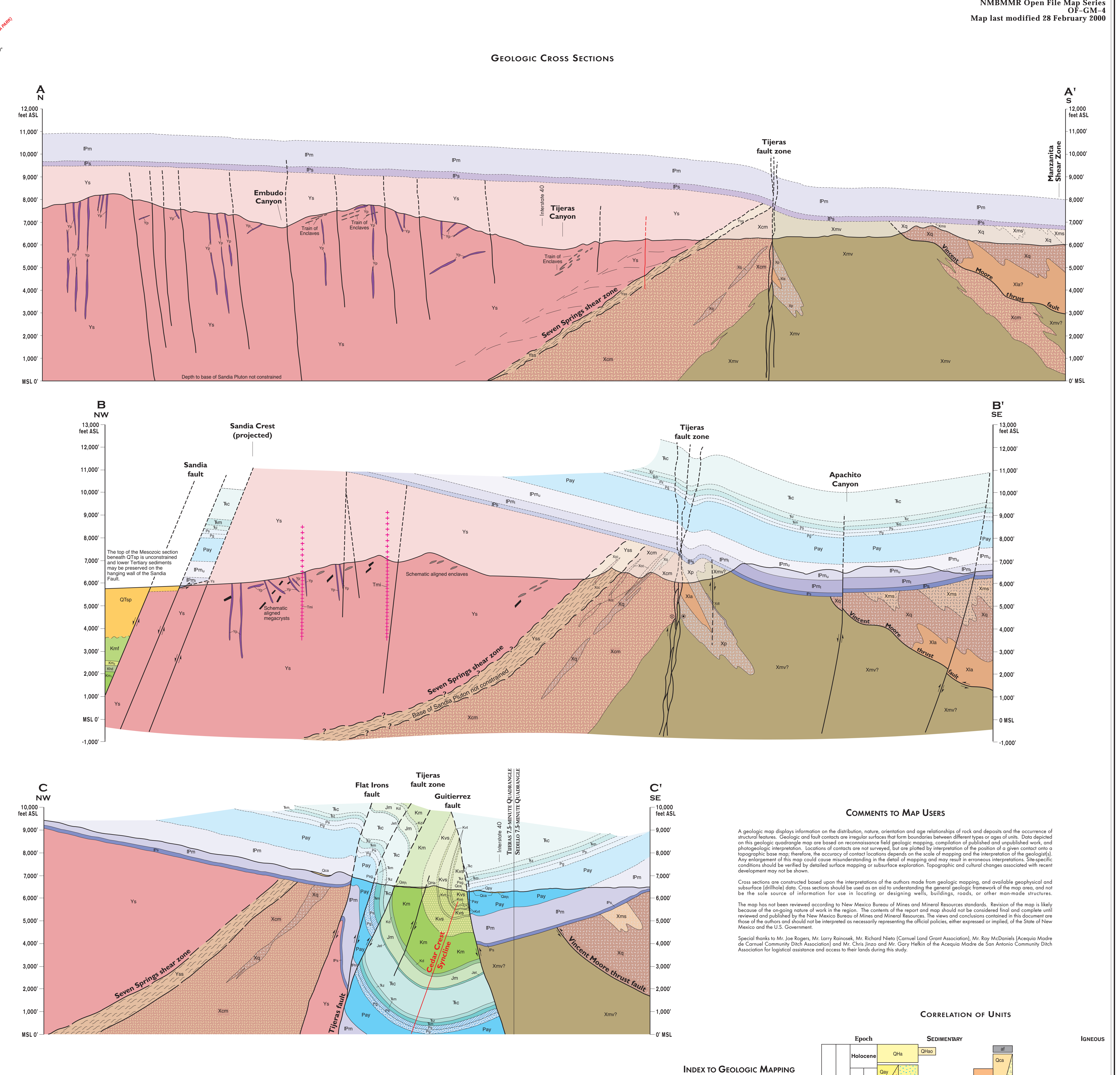
Mesozoic Rocks
Cretaceous
Mesa Group, undivided (M) - A complex of fine, magnesian, micaceous, and fossiliferous shales...

Upper Permian
San Andres and Clinton Formations - The upper two lithostratigraphic units of the Permian...

Mesozoic Rocks
Cretaceous
Mesa Group, undivided (M) - A complex of fine, magnesian, micaceous, and fossiliferous shales...

Upper Permian
San Andres and Clinton Formations - The upper two lithostratigraphic units of the Permian...

Mesozoic Rocks
Cretaceous
Mesa Group, undivided (M) - A complex of fine, magnesian, micaceous, and fossiliferous shales...



Geologic Cross Sections. The top of the Mesozoic section is shown in red. The base of the Permian section is shown in blue. The base of the Paleozoic section is shown in green.

COMMENTS TO MAP USERS
A geologic map displays information on the distribution, nature, orientation and age relationships of rock and deposits and the occurrence of structural features. Geologic maps are prepared on irregular surfaces for four fundamental reasons...

INDEX OF MAP SYMBOLS
Geologic cross-section symbols:
Geologic cross-section symbols:
Geologic cross-section symbols:

EXPLANATION OF MAP SYMBOLS
Geologic cross-section symbols:
Geologic cross-section symbols:
Geologic cross-section symbols:

REFERENCES
Ammons, A. B., 1922. Stratigraphy and paleontology of the Mesozoic Ammonoite Fauna of the Tijeras...

INDEX OF MAP SYMBOLS (continued)
Geologic cross-section symbols:
Geologic cross-section symbols:
Geologic cross-section symbols:

EXPLANATION OF MAP SYMBOLS (continued)
Geologic cross-section symbols:
Geologic cross-section symbols:
Geologic cross-section symbols:

REFERENCES (continued)
Ammons, A. B., 1922. Stratigraphy and paleontology of the Mesozoic Ammonoite Fauna of the Tijeras...

INDEX OF MAP SYMBOLS (continued)
Geologic cross-section symbols:
Geologic cross-section symbols:
Geologic cross-section symbols: