

Dr. Peter A. Scholle  
Director and State Geologist

Dr. Paul W. Bauer  
Geologic Mapping  
Program Director

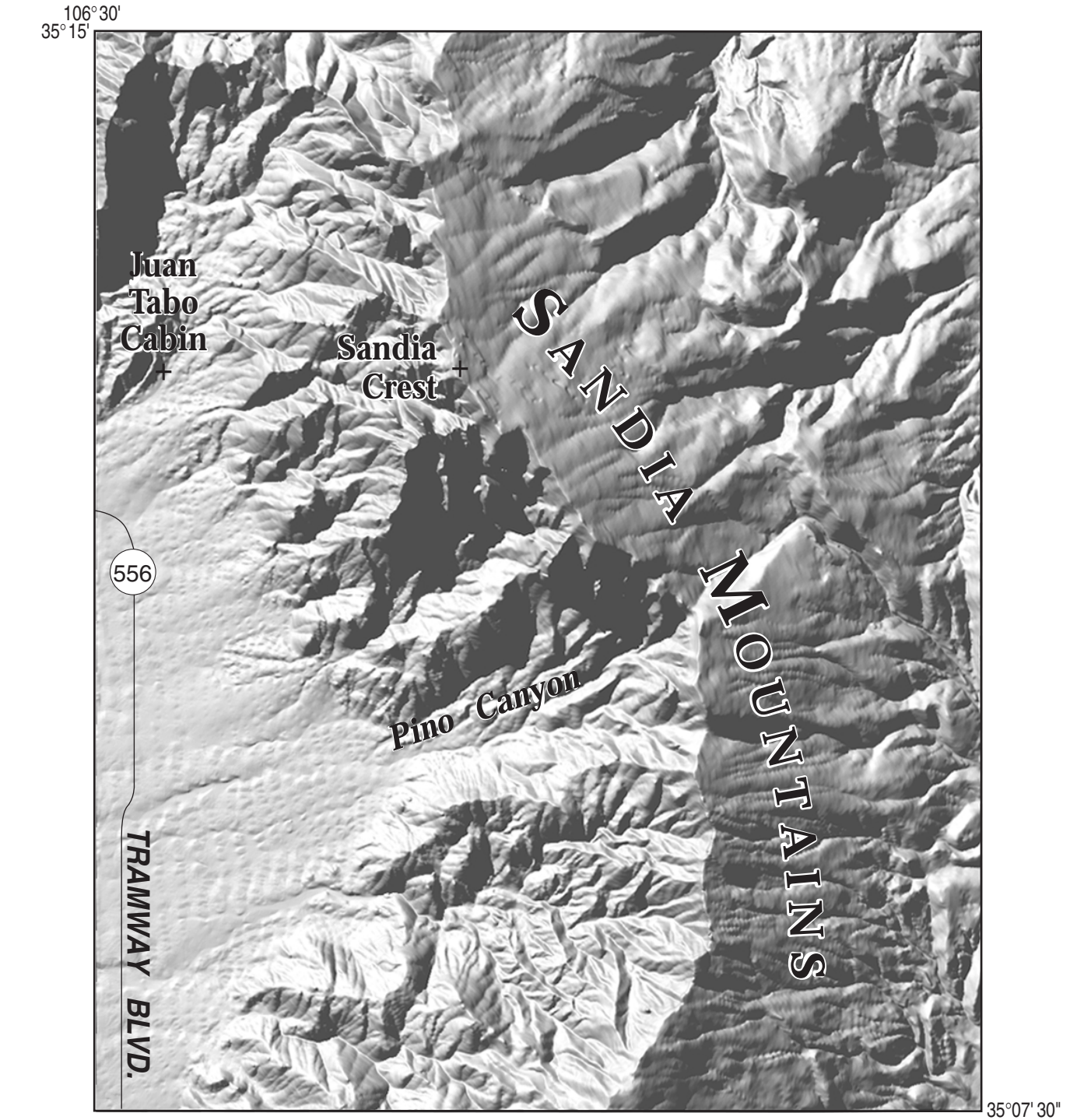
### Geology of Sandia Crest quadrangle, Bernalillo and Sandoval Counties, New Mexico

Plate II of II.  
February 1999

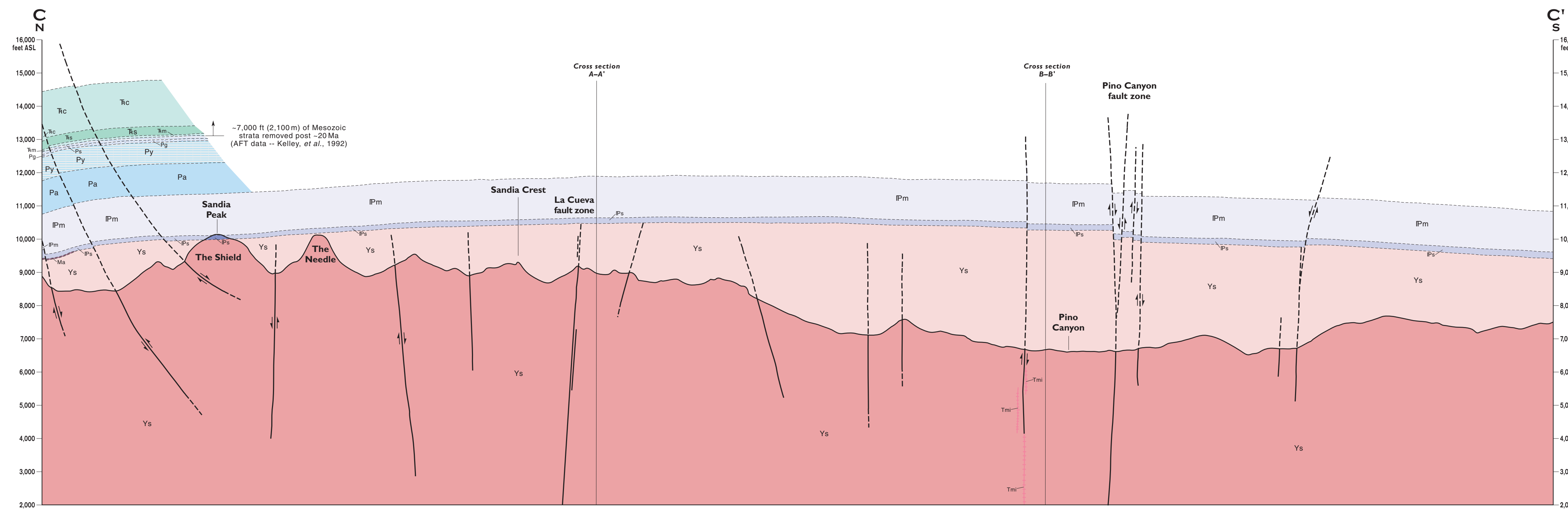
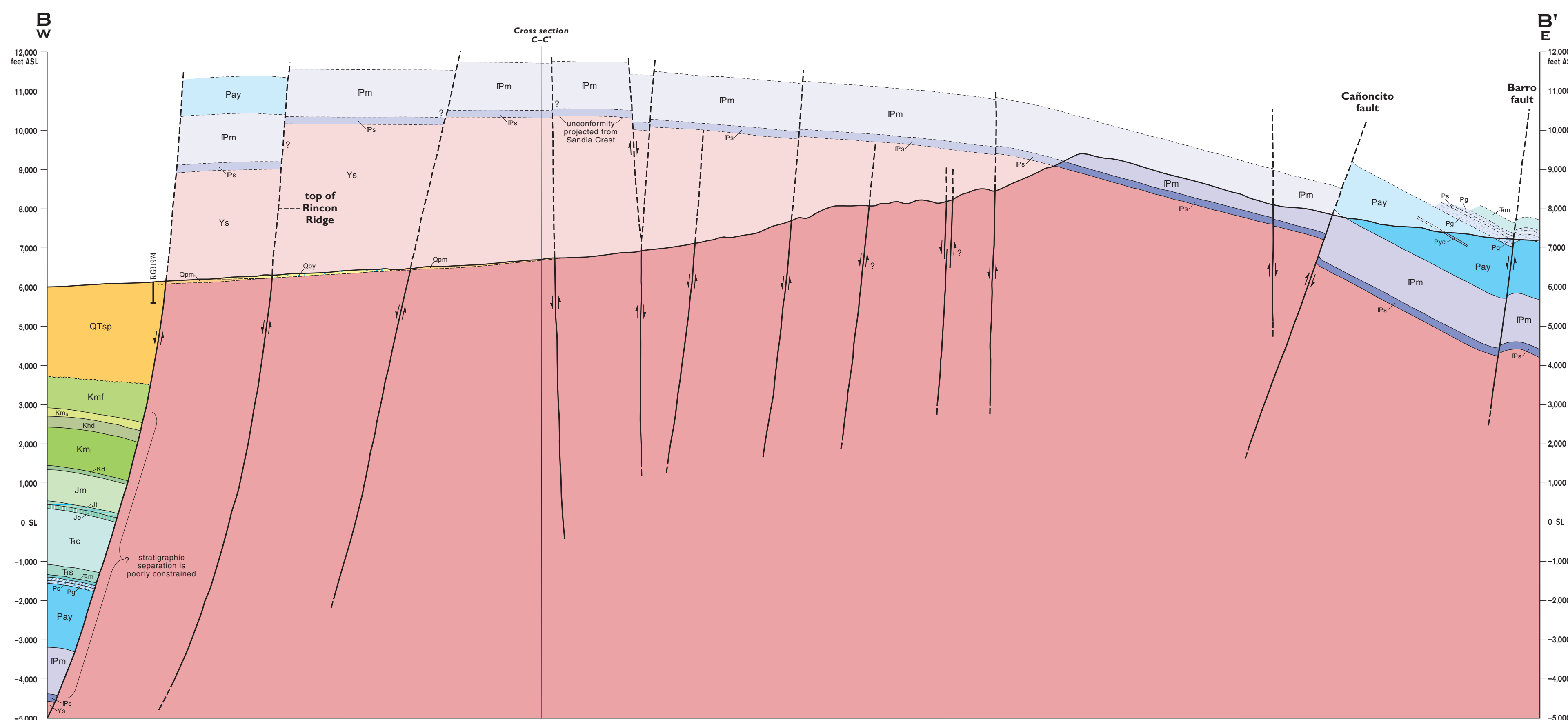
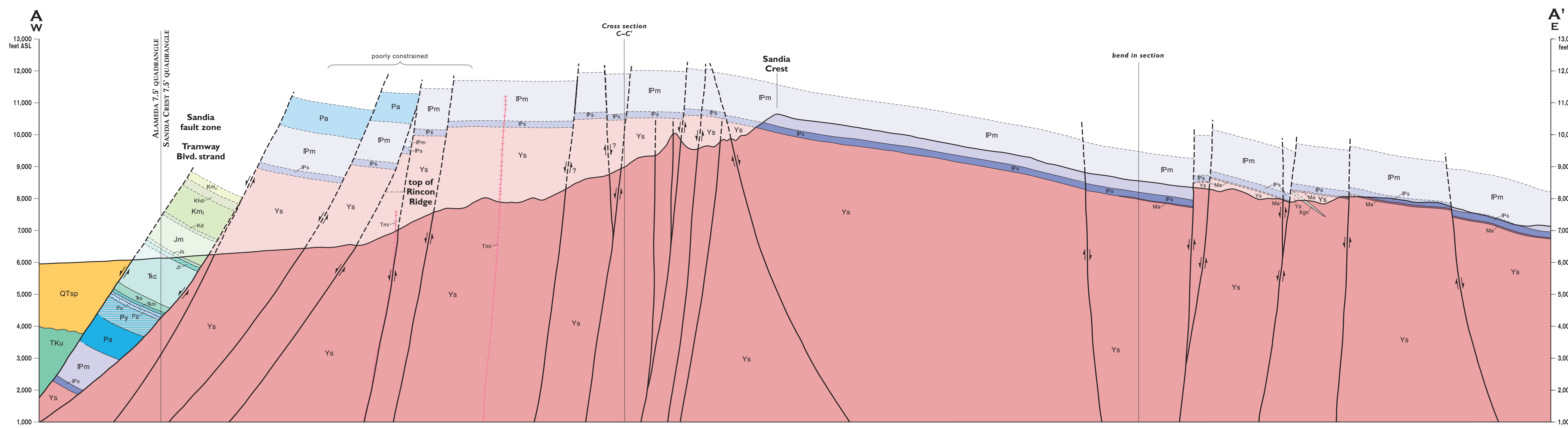
22 February 2000 Revision

by Adam S. Read<sup>1</sup>, Karl E. Karlstrom<sup>1</sup>, Sean Connell<sup>1</sup>,  
Eric Kirby<sup>2</sup>, Charles A. Ferguson<sup>3</sup>, Bradley Jig<sup>3</sup>, Glenn R. Osburn<sup>4</sup>,  
Dirk Van Hart<sup>5</sup>, and Frank J. Sazzaglio<sup>6</sup>

<sup>1</sup>New Mexico Bureau of Mines and Mineral Resources, Socorro, NM 87801  
<sup>2</sup>Department of Earth and Planetary Sciences, University of New Mexico, Albuquerque, NM 87131  
<sup>3</sup>Nevada Geological Survey, 410 W. Congress, #100, Reno, NV 89501  
<sup>4</sup>Department of Earth and Planetary Sciences, Washington University, St. Louis, MO 63130  
<sup>5</sup>GRAM, Inc., Albuquerque, NM



Physiography of the Sandia Crest quadrangle based upon 10-m USGS DEM data.



Cross sections are constructed based upon the interpretations of the authors made from geologic mapping, and available subsurface (drillhole) data. Cross sections should be used as an aid to understanding the general geologic framework of the map area, and not be the sole source of information for use in locating or designing wells, buildings, roads, or other man-made structures.

