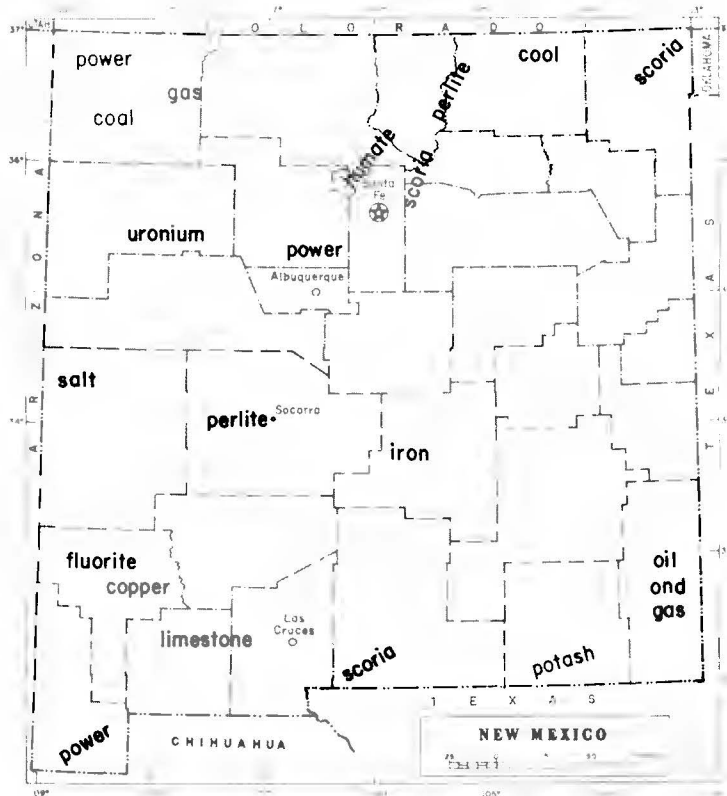


Mines, processing plants, and power plants in New Mexico

by W. T. SIEMERS and G. S. AUSTIN



RESOURCE MAP 9 New Mexico Bureau of Mines & Mineral Resources 1979

A DIVISION OF

NEW MEXICO INSTITUTE OF MINING & TECHNOLOGY

Mines, processing plants, and power plants in New Mexico

by W. T. Siemers and G. S. Austin

Contents

EXPLANATION

- Map 3
- Directory 4
- Abbreviations 5

ACTIVE MINES

- County directory 7
- Commodity directory 12
- Owner directory 14
- Mine directory 15

ACTIVE PLANTS

- County directory 17
- Commodity directory 22
- Owner directory 24
- Plant directory 25

New Mexico Bureau of Mines and Mineral Resources

A DIVISION OF
NEW MEXICO INSTITUTE OF MINING AND TECHNOLOGY

NEW MEXICO INSTITUTE OF MINING & TECHNOLOGY

KENNETH W. FORD, *President*

NEW MEXICO BUREAU OF MINES & MINERAL RESOURCES

FRANK E. KOTTLAWSKI, *Director*

GEORGE S. AUSTIN, *Deputy Director*

BOARD OF REGENTS

Ex Officio

Bruce King, *Governor of New Mexico*

Leonard DeLayo, *Superintendent of Public Instruction*

Appointed

William G. Abbott, 1961-1985, *Hobbs*

Judy Floyd, *Secretary-Treasurer, 1977-1981, Las Cruces*

Owen Lopez, *President, 1977-1983, Santa Fe*

Dave Rice, 1972-1983, *Carlsbad*

Steve Torres, 1967-1985, *Socorro*

BUREAU STAFF

Full Time

WILLIAM E. ARNOLD, *Scientific Illustrator*

ROBERT A. BIEBERMAN, *Senior Petrol. Geologist*

LYNN A. BRANDVOLD, *Chemist*

CORALE BRIERLEY, *Chemical Microbiologist*

BRENDA R. BROADWELL, *Assist. Lab. Geoscientist*

CHARLES E. CHAPIN, *Senior Geologist*

JEANETTE CHAVEZ, *Admin. Secretary I*

RICHARD R. CHAVEZ, *Laboratory Technician IV*

RUBEN A. CRESPIN, *Laboratory Technician II*

LOIS M. DEVLIN, *Director, Bus.-Pub. Office*

KATHY C. EDEN, *Editorial Clerk*

ROBERT W. EVELETH, *Mining Engineer*

ROUSSEAU H. FLOWER, *Sr. Emeritus Paleontologist*

STEPHEN J. FROST, *Coal Geologist*

JOHN W. HAWLEY, *Environmental Geologist*

CANDACE L. HOLTS, *Associate Editor*

STEPHEN C. HOOK, *Paleontologist*

BRADLEY B. HOUSE, *Draftsperson*

ROBERT W. KELLEY, *Editor & Geologist*

R. E. KELLEY, *Field Geologist*

STEPHANIE LANDREGAN, *Draftsperson*

GARY L. MASSINGILL, *Geologist*

SUSAN McCUE, *Laboratory Technician I*

TERRENCE McMAHON, *Geophys. Field Engineer*

NORMA J. MEEKS, *Staff Secretary*

ARLEEN MONTOYA, *Librarian/Typist*

ROBERT M. NORTH, *Mineralogist*

GLENN R. OSBURN, *Volcanologist*

LINDA PADILLA, *Staff Secretary*

NEILA M. PEARSON, *Assistant Editor*

JOAN C. PENDLETON, *Assistant Editor*

JUDY PERALTA, *Executive Secretary*

BARBARA R. POPP, *Lab. Biotechnologist*

ROBERT QUICK, *Driller's Helper*

BRUCE REID, *Geologist*

MARSHALL A. REITER, *Geophysicist*

JACQUES R. RENAULT, *Geologist*

JAMES M. ROBERTSON, *Mining Geologist*

BARBARA ROBINSON, *Geologist*

W. TERRY SIEMERS, *Indust. Minerals Geologist*

JACKIE H. SMITH, *Laboratory Technician IV*

CHANTRAVADEE SONGKRAN, *Staff Secretary*

WILLIAM J. STONE, *Hydrogeologist*

DAVID E. TABET, *Geologist*

SAMUEL THOMPSON III, *Petroleum Geologist*

ROBERT H. WEBER, *Senior Geologist*

WILLIAM T. WILLIS, *Driller*

DONALD WOLBERG, *Field Geol./Vert. Paleontologist*

MICHAEL W. WOOLRIDGE, *Scientific Illustrator*

JOHN R. WRIGHT, *Paleont. Preparator/Curator*

Part Time

CHRISTINA L. BALK, *Geologist*

NANCY H. MIZELL, *Geologist*

HOWARD B. NICKELSON, *Coal Geologist*

BEVERLY OHLINE, *NewsWriter, Information Services*

ALLAN R. SANFORD, *Geophysicist*

THOMAS E. ZIMMERMAN, *Chief Security Officer*

Graduate Students

SCOTT K. ANDERHOLM

SAM BOWRING

GERRY W. CLARKSON

STEVEN D. CRAIGG

MARTIN A. DONZE

K. BABETTE FARIS

SUSAN C. KENT

T. MATTHEW LAROCHÉ

DAVID M. PETTY

SUSAN ROTH

CHARLES R. SHEARER

Plus about 25 undergraduate assistants

Explanation

This resource map identifies and locates most of the mineral and energy operations in New Mexico—including mines, processing plants, refineries, and power plants, but excluding all sand-and-gravel operations and oil and gas wells. Mines and plants are plotted on one map to show the frequent interdependence of extraction and treatment operations—such as in Grant County. These mines and mills have profoundly influenced the history and economy of the state: large companies have dominated the industry, but a glance at the directories included here indicates that smaller, newer companies are also playing a key role in the development of New Mexico's mineral industry.

The mine/plant locations are superimposed on a generalized geologic map to portray the fundamental relationship between mineral resources and geologic formations, especially for teachers, students, planners, and interested citizens in New Mexico and elsewhere. Mine and plant locations are plotted on a 1:1,000,000 U. S. Geological Survey base map; the geology is modified from the standard geologic map of New Mexico (Dane, C. H., and Bachman, G. O., 1965, Geologic map of New Mexico: U. S. Geological Survey, scale 1:500,000). Resource Map 9 can be used as a wall map; therefore, the comprehensive directory is issued as an accompanying pamphlet to facilitate cross-checking of information.

MAP

The basic resource data plotted on the generalized geologic map falls into several categories.

Raw-material extraction sites are indicated by various solid black symbols depending upon the commodity that occurs at each location. These symbols for extraction sites are numbered within each county for easy reference to the directory. These sites include not only mines, but also pits and quarries; for convenience, however, the map legend and directory refer to all extraction sites as "mines." We do not include oil and gas wells, fields, or pipelines, because they would dominate a map of this scope; information on oil-and-gas-producing areas can be found in several New Mexico Bureau of Mines and Mineral Resources publications, especially Resource Map 2, Resource Map 3, and Circular 166.

Mineral-processing sites are indicated by an outlined symbol that corresponds to the solid symbol representing a mine for that commodity; for reference to the directory, these outlined symbols are marked by letters, starting with **A** in each county. This correspondence of symbols between mines and plants demonstrates the usually close proximity of extraction site and processing plant; sometimes, however, processing plants are far removed from the mine or mines whose product they handle—perhaps in order to have enough water for operations, to be able to meet pollution standards, or to have a convenient location between extraction site and consumer.

Oil refineries and gas-processing plants are included even though wells are not; their location suggests the major areas of production. Refineries are indicated on the map by an outlined diamond with a dot in the center; gas-processing plants are indicated by an outlined diamond. These symbols too are marked by letters in each county.

Electricity-generating plants are shown and suggest one way in which New Mexico's mineral resources are used to generate energy. These power plants are indicated by four different kinds of stars to show whether the power is generated by oil, coal, gas, or water (in New Mexico's one hydroelectric plant), and again they are marked with letters.

DIRECTORY

The separate resource directory is organized in two parts: four lists for active mines and four lists for active plants. In both parts the major list is the county directory. The other directories for mines and plants (commodity, company name, mine/plant name) are cross-referenced to the county directory; likewise, numbered and lettered symbols on the map are cross-referenced to the county directories.

In each county directory the counties are listed alphabetically; under each county the commodities themselves are listed alphabetically under several major groupings: coal, humate, industrial rocks and minerals, metals, and uranium (or in the plant directory: coal, gas, industrial rocks and minerals, metals, power, refineries, and uranium). Under each commodity grouping, mines or plants are listed alphabetically by name. In each county, mines are numbered to correspond with the numbered symbol on the map; plants are marked by letters both in the directory and on the map. For example, in the county directory for mines, under Eddy County, the Nash Draw langbeinite mine is numbered 5; on the map the mine will be plotted in Eddy County as a solid circle marked with a 5; and in the other directories, Nash Draw mine will be indexed as Eddy 5. In the county directory for plants, under Eddy County, the AMAX potash-processing plant is listed as F; on the map, the plant will be plotted in Eddy County as an outlined circle marked with an F; and in the other directories, the AMAX plant will be indexed as Eddy F.

Entries under the county directories include the following information: 1) name of the mine or plant, 2) location, 3) commodity produced or processed, 4) capacity, and 5) company name, address, and telephone number. If an operation did not have an official name or if its name was unknown, it was named for the operating company and for clarity the commodity produced was included in the name. Locations of the operations are given by section, township, and range (10-1N-3W represents sec. 10, T. 1 N., R. 3 W.). When operations are located near each other, small adjustments in plotting were made to prevent overlapping of map symbols. When a section number could not be obtained, the operation was plotted in the center of the township. If an operation occurs in more than one section, the operation is plotted on the map in the section that is probably of most interest—for instance, the section where the main shafts or administrative offices are located.

When a mine or plant is listed under *industrial rocks and minerals* in the county directory, the specific commodity produced or processed (such as pumice or scoria) is also indicated. The phrase *industrial rocks and minerals* includes any rock, mineral, or other naturally occurring substance of economic value, exclusive of the metallics, mineral fuels, and gemstones. The sand and gravel industry is not included, however, because of the mobile and frequently temporary nature of the industry. A list of sand-and-gravel operations occurs in the New Mexico State Mine Inspector's report. Humate, a brown carbonaceous mudstone marketed as a soil amendment, is listed separately from industrial rocks and minerals because of its organic nature. Metal mines (and processing plants) are also grouped together, but the specific commodity is listed for each operation. Although uranium is a metal, it is separated here from the metallic group because of the large number of uranium operations in New Mexico.

Mine and plant capacities are reported in various units of weight or volume per various units of time; these units and their abbreviations are listed below. The figures represent the capacity of an operation and not necessarily its current production or processing rate.

The commodity directories are arranged alphabetically by the product mined or processed; mine/plant name and county index are listed under each heading. The directories for company names and mine/plant names are also alphabetic listings; county indexes are listed for cross-reference.

ACKNOWLEDGMENTS—The names of mines, plants, operators, and owners were acquired from the annual reports and new-registration lists of the New Mexico Inspector of Mines, from the directory of New Mexico Manufacturing and Mining, and through personal communication. Data was gathered from all individuals with active mining or processing operations in New Mexico. Errors or omissions will be corrected in future editions of this map.

The following New Mexico Bureau of Mines and Mineral Resources staff members provided information about various operations and commodities: D. E. Tabet and S. J. Frost, coal; G. S. Austin and W. T. Siemers, industrial rocks and minerals; J. M. Robertson and R. H. Weber, metallic minerals; Christopher Rautman, uranium; Robert Shantz, processing plants; and R. A. Bieberman, petroleum.

We also appreciate the cooperation of New Mexico's mine and plant operators and owners. Without their help, this compilation would have been impossible.

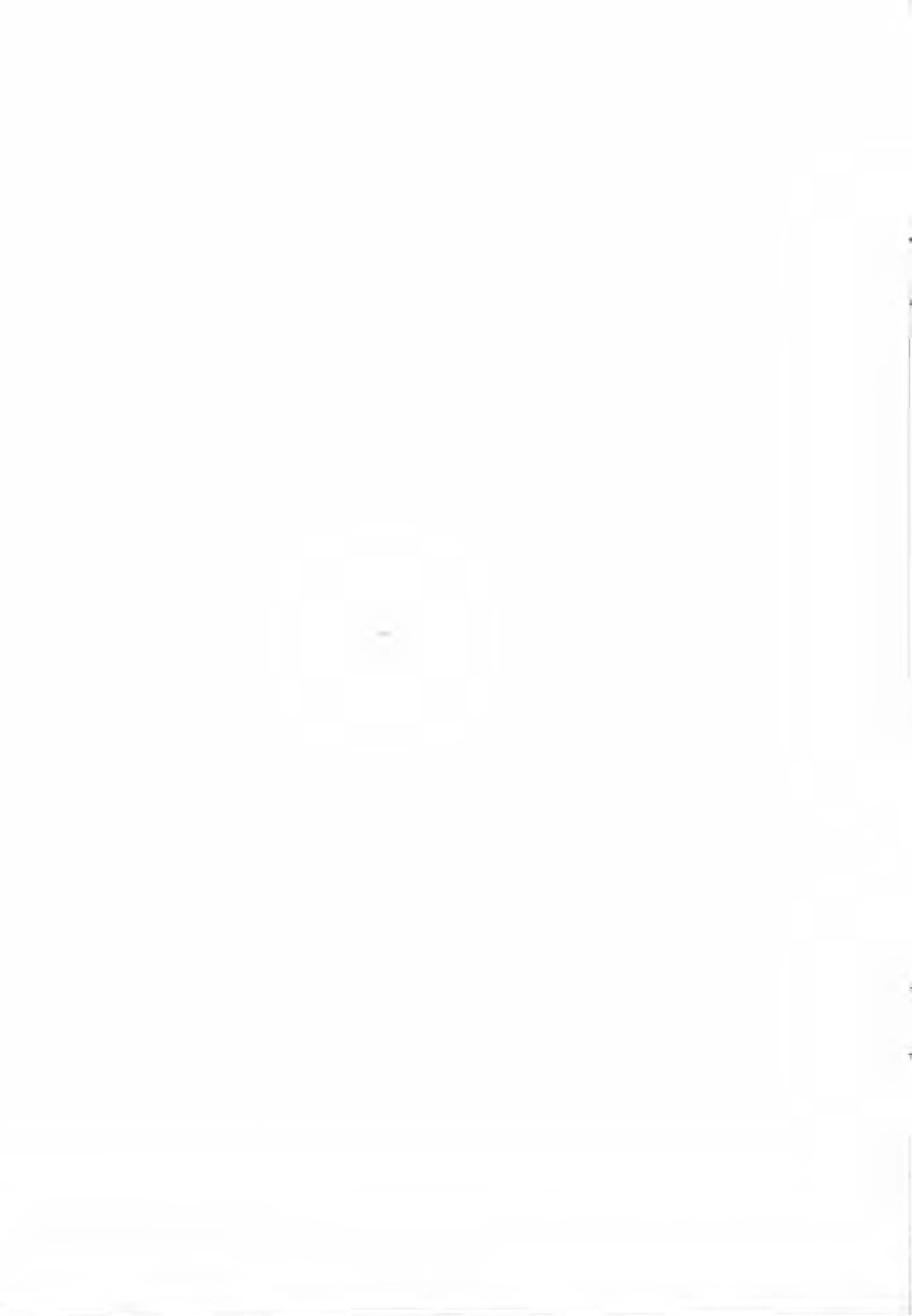
The Bureau expects to update this material from time to time. We would like to be notified of any changes whatsoever.

Socorro
March 1, 1979

W. Terry Siemers
Industrial-Minerals Geologist
George S. Austin
Deputy Director
New Mexico Bureau of Mines
and Mineral Resources

ABBREVIATIONS

b/cd	barrels of oil per calendar day
b/sd	barrels of oil per stream day
cf/d	cubic feet per day
cyd	cubic yards per day
est.	estimate
mmcf/d	million cubic feet per day
mw	megawatts
mt/y	million tons per year
n.a.	not available
tpd	tons per day
tph	tons per hour
tpm	tons per month
tpy	tons per year



Active mines in New Mexico

COUNTY DIRECTORY

Bernalillo County

Industrial rocks and minerals

- 1 Black Bird; 18-8N-1E; *scoria*; 16 tpd
Rocky Mountain Stone Co., P.O. Box 6008
Albuquerque, NM 87107 505/344-2611
- 2 Hatti; 18&19-9N-6E; *clay*; 80 tpd
Kinney Brick Co., P.O. Box 1804
Albuquerque, NM 87102 505/877-4550
- 3 Tijeras; 22&27-10N-5E; *limestone, clay*; 4,000 tpd
Ideal Basic Industries, Cement Division, P.O. Box 100
Tijeras, NM 87059 505/281-3311

Catron County

Industrial rocks and minerals

- 1 Zuni Salt Lake; 31-3N-18W; *salt*; 200 tpy
Pueblo Zuni Salt Corp., Star Route, Salt Lake
Quemado, NM 87829 505/773-4636

Colfax County

Coal

- 1 West York Canyon; 3-30N-19E; *strip*; 0.5 mty
Kaiser Steel Corp., P.O. Box 1107
Raton, NM 87740 505/445-5531
- 2 York Canyon No. 1; 3-30N-19E; *drift*; 1.1 mty
Kaiser Steel Corp., P.O. Box 1107
Raton, NM 87740 505/445-5531
- 3 York Canyon Prospect; 18-31N-19E; *drift*; under
development
Kaiser Steel Corp., P.O. Box 1107
Raton, NM 87740 505/445-5531

Doña Ana County

Industrial rocks and minerals

- 1 Black Bear Mountain; 1&12-26S-1E; *scoria*; 150 cyd
Del Norte Masonry Products, 4560 Ripley Dr.
El Paso, TX 79922 915/584-4453
- 2 Clay pits; 15-29S-4E; *clay*; 36,000 cyd
El Paso Brick Co., P.O. Box 12336
El Paso, TX 79912 915/589-4474
- 3 Donna Mountain; 15-24S-4W; *scoria*; 33,000 cyd
Morton Brothers Cinders and Stone, P.O. Box 2000
Las Cruces, NM 88001 505/523-5750
- 4 East Vado; 16-25S-3E; *building stone*; 35 tpd
Guillen Construction Co., 3416 Nahvile
El Paso, TX 79930 915/566-7261
- 5 Rainbow Marble; 23-21S-2W; *calcite*; 96 cfd
Apache Springs Co., P.O. Box 48
Radium Springs, NM 88054 505/524-4032

- 6 Santo Tomas; 31-24S-2E; *scoria*; 250 cyd
Morton Brothers Cinders and Stone; P.O. Box 2000
Las Cruces, NM 88001 505/523-5750
- 7 Silica Pit; 9-29S-4E; *silica sandstone*; 10,000 tpy
El Paso Brick Co., P.O. Box 12336
El Paso, TX 79912 915/589-4474
- 8 Volcano No. 1; 22-25S-3W; *scoria*; idle
Morton Brothers Cinders and Stone, P.O. Box 2000
Las Cruces, NM 88001 505/523-5750

Eddy County

Industrial rocks and minerals

- 1 AMAX; 9-19S-30E; *potash*; 9,200 tpd
AMAX Chemical Corp., P.O. Box 279
Carlsbad, NM 88220 505/885-3157
- 2 Hobbs potash facility; 4-21S-31E; *potash*; 9,000 tpd
Kerr-McGee Chemical Corp., P.O. Box 610
Hobbs, NM 88240 505/397-3261
- 3 IMCC; 1&12-22S-29E; *potash*; 14,000 tpd
International Minerals and Chemicals Corp., P.O. Box 71
Carlsbad, NM 88220 505/887-5591
- 4 Mississippi Chemical; 12&13-21S-29E; *potash*; 5,000 tpd
Mississippi Chemical Corp., P.O. Box 101
Carlsbad, NM 88220 505/887-5591
- 5 Nash Draw; 33&34-22S-30E; *langbeinite*; 3,500 tpd
Duval Corp., P.O. Box 511
Carlsbad, NM 88220 505/885-3175
- 6 PCA; 4-20S-30E; *potash*; 10,000 tpd
Potash Company of America, P.O. Box 31
Carlsbad, NM 88220 505/887-2844
- 7 Salt Lake; 12-22S-29E; *salt*; 600 tpd
United Salt Corp., P.O. Box 55
Carlsbad, NM 88220 505/885-2105

Grant County

Industrial rocks and minerals

- 1 Buckhorn; 10-15S-18W; *zeolite*; n.a.
Double Eagle, P.O. Box 766
Casper, WY 82602 307/237-9330
- 2 Clum; 33-14S-16W; *fluorite*; 14,400 tpy
Frank Turley and John Foster, P.O. Box 53
Deming, NM 88030 505/546-2408
- 3 Great Eagle; 22-19S-18W; *fluorite*; 750 tpd
McCauley Mining
Redrock, NM 88055 505/542-9024
- 4 Hurley Lime Quarry; 26&27-18S-13W; *limestone*; 400 tpd
Kennecott Copper Corp., Chino Mines Division
Hurley, NM 88043 505/537-3381
- 5 Mathis Lime Quarry; 19-17S-12W; *limestone*; 130 tpd
Mathis and Mathis Mining and Exploration; P.O. Box 452
Silver City, NM 88041 505/538-9453

Metal

- 6 Boston Hill; 9-18S-14W; *iron, manganese*; 250 tpd
Luck Mining Co., P.O. Box 29
Silver City, NM 88061 505/538-5621
- 7 Center; 1-17S-21W; *gold, silver*; 75 tpd
Dresser Minerals, P.O. Box 916
Duncan, AZ 85534 602/359-2446
- 8 Chino; 34-17S-12W; *copper, molybdenum, gold, silver*;
110,000 tpd (ore, waste, flux)
Kennecott Copper Corp., Chino Mines Division
Hurley, NM 88043 505/537-3381
- 9 Continental; 4-17S-12W; *copper, iron, zinc*; 8,000 tpd
UV Industries, Inc., P.O. Box 406
Hanover, NM 88041 505/534-2225
- 10 Ground Hog; 5-18S-12W; *copper, lead, zinc, gold, silver*;
500 tpd
American Smelting and Refining Co., P.O. Box 186
Vanadium, NM 88073 505/537-5821
- 11 Laura; 2-16S-21W; *gold, silver*; under development
Summit Minerals, P.O. Box W
Duncan, AZ 85534 602/359-2835
- 12 Summit Minerals; 36-16S-21W; *gold, silver*; 100 tpd
Summit Minerals, P.O. Box W
Duncan, AZ 85534 602/359-2835
- 13 Tyrone, 14.22&23-19S-15W; *copper, gold, silver*; 238,000
tpd (ore, leach, waste)
Phelps Dodge Corp., P.O. Drawer B
Tyrone, NM 88065 505/538-5331

Hidalgo County*Industrial rocks and minerals*

- 1 Brockman silica mine; 1-26S-17W; *silica sandstone*;
70,000 tpy
Phelps Dodge Corp., P.O. Drawer B
Tyrone, NM 88065 505/538-5331
- 2 Fire clay pit 290082; 32-27S-20W; *clay*; 1,500 tpy
Phelps Dodge Corp., P.O. Drawer B
Tyrone, NM 88065 505/538-5331

Lea County*Industrial rocks and minerals*

- 1 Lea; 18-20S-32E; *potash*; 6,000 tpd
National Potash Co., P.O. Box 731
Carlsbad, NM 88220 505/885-3134
- 2 National Tailings mine; 18-20S-32E; *salt*; 2,700 tpd
Williams Brine Service, 851 Standpipe Road
Carlsbad, NM 88220 505/885-6514

Lincoln County*Metal*

- 1 Alpha; 5-5S-12E; *various metals*; 1,500 tpd
Alpha Mineral Processing Corp., P.O. Box 96
Carrizozo, NM 88301 505/648-2406
- 2 Smokey; 10-8S-14E; *iron*; 350 tpd
H. N. Larne and Sons, P.O. Box 146
Capitan, NM 88316 505/354-2508

Luna County*Industrial rocks and minerals*

- 1 Greenleaf; 18-22S-8W; *fluorite*; 30,000 tpy
Frank Turley and John Foster, P.O. Box 53
Deming, NM 88030 505/546-2408
- 2 Henry Clay; 20-20S-10W; *clay*; 400 tpy
Mathis and Mathis Mining and Exploration, P.O. Box 452
Silver City, NM 88061 505/538-9440
- 3 Placer; 19-20S-10W; *flagstone*; 50 tpy
W. H. Thomas
P.O. Box 225
Silver City, NM 88061 505/538-9440

McKinley County*Coal*

- 1 Amcoal No. 1; 9-14N-17W; *strip*; 1.65 mty
Amcoal, Inc., P.O. Box 832
Riverside, CA 92502 714/683-3660
- 2 Mentmore; 4-15N-19W; *strip*; under development
(1.2 mty est.)
Carbon Coal Co., P.O. Box 481
Mentmore, NM 87319 505/722-6646
- 3 McKinley; 29-17N-20W; *strip*; 4.0 mty
Pittsburg and Midway Coal Co., P.O. Box M
Gallup, NM 87301 505/371-5511

Industrial rocks and minerals

- 4 Red Dog; 32-16N-18W; *cinder*; 300 cyd
Mendoza Red Dog, 301 East Adams
Gallup, NM 87301 505/863-5806
- 5 San Antone Pit; 17-14N-12W; *limestone*; 500 tpd
Gallup Sand and Gravel Co., P.O. Box 1119
Gallup, NM 87301 505/863-4824

Uranium

- 6 Ann Lee; 28-14N-9W; 50,000 tpy
United Nuclear Corp., P.O. Drawer QQ
Gallup, NM 87301 505/722-6651
- 7 Church Rock No. 1; 35-17N-16W; 1,000 tpd
Kerr-McGee Nuclear Corp., P.O. Box 28
Church Rock, NM 87311 505/863-3795
- 8 Doris; 21-13N-9W; 25 tpd
Ranchers Exploration and Development Co.,
P.O. Box 6217
Albuquerque, NM 87107 505/344-3542
- 9 The Flea Doris Extension; 21-13N-9W; 100 tpd
Four Corners Exploration Co., P.O. Box 116
Grants, NM 87020 505/287-4722
- 10 Haystack; 13-13N-11W; 300 tpd
Todilto Exploration and Development Corp.,
3810 Academy Parkway South, NE
Albuquerque, NM 87109 505/345-8391
- 11 Hope; 19-13N-9W; 200 tpd
Ranchers Exploration and Development Co.,
P.O. Box 6217
Albuquerque, NM 87107 505/344-3542
- 12 Johnny M; 7&18-13N-8W; 750 tpd
Ranchers Exploration and Development Co.,
P.O. Box 6217
Albuquerque, NM 87107 505/344-3542

- 13 Mariano Lake; 12-15N-14W; 600 tpd
Gulf Mineral Resources, P.O. Box 1150
Grants, NM 87020 505/287-2951
- 14 Marquez Canyon; 36-13N-5W; 800 tpd
Bokum Resources Corp., P.O. Box 1833
Santa Fe, NM 87501 505/982-1824
- 15 Northeast Church Rock; 35-17N-16W; 745,000 tpy
United Nuclear Corp., P.O. Drawer QQ
Gallup, NM 87301 505/722-6651
- 16 Nose Rock No. 1; 31-19N-11W; n.a.
Phillips Uranium Corp., P.O. Box J
Crownpoint, NM 87313 505/786-5861
- 17 Poison Canyon; 19-13N-9W; 300 tpd
Reserve Oil and Minerals Corp., 20 First Plaza, Suite 308
Albuquerque, NM 87102 505/247-2384
- 18 Ruby No. 1; 21-15N-13W; 500 tpd
Western Nuclear, Inc., 134 Union Blvd.
Lakewood, CO 80228 303/986-4571
- 19 Sandstone; 34-14N-9W; 140,000 tpy
United Nuclear Corp., P.O. Drawer QQ
Gallup, NM 87301 505/722-6651
- 20 Section 11; 11-14N-10W; n.a.
United Nuclear-Homestake Partners, P.O. Box 98
Grants, NM 87020 505/287-4456
- 21 Section 12; 12-14N-10W; 500 tpd
Cobb Nuclear Corp., 20 First Plaza, Suite 104
Albuquerque, NM 87102 505/883-7333
- 22 Section 13; 13-14N-10W; n.a.
United Nuclear-Homestake Partners, P.O. Box 98
Grants, NM 87020 505/287-4456
- 23 Section 15; 15-14N-10W; n.a.
United Nuclear-Homestake Partners, P.O. Box 98
Grants, NM 87020 505/287-4456
- 24 Section 17; 17-14N-9W; n.a.
Kerr-McGee Nuclear Corp., P.O. Box 218
Grants, NM 87020 505/287-8851
- 25 Section 19; 19-14N-9W; n.a.
Kerr-McGee Nuclear Corp., P.O. Box 218
Grants, NM 87020 505/287-8851
- 26 Section 23; 23-14N-10W; n.a.
United Nuclear-Homestake Partners, P.O. Box 98
Grants, NM 87020 505/287-4456
- 27 Section 24; 24-14N-10W; n.a.
Kerr-McGee Nuclear Corp., P.O. Box 218
Grants, NM 87020 505/287-8851
- 28 Section 25; 25-14N-10W; n.a.
United Nuclear-Homestake Partners, P.O. Box 98
Grants, NM 87020 505/287-4456
- 29 Section 27 East; 27-14N-9W; 60,000 tpy
United Nuclear Corp., P.O. Drawer QQ
Gallup, NM 87301 505/722-6651
- 30 Section 30; 30-14N-9W; n.a.
Kerr-McGee Nuclear Corp., P.O. Box 218
Grants, NM 87020 505/287-8851
- 31 Section 30 West; 30-14N-9W; n.a.
Kerr-McGee Nuclear Corp., P.O. Box 218
Grants, NM 87020 505/287-8851
- 32 Section 32; 32-15N-11W; 75 tpd
Cobb Nuclear Corp., 20 First Plaza, Suite 404
Albuquerque, NM 87102 505/883-7333
- 33 Section 32; 32-14N-9W; n.a.
United Nuclear-Homestake Partners, P.O. Box 98
Grants, NM 87020 505/287-4456
- 34 Section 35; 35-14N-9W; n.a.
Kerr-McGee Nuclear Corp., P.O. Box 218
Grants, NM 87020 505/287-8851
- 35 Section 36; 36-14N-9W; n.a.
Kerr-McGee Nuclear Corp., P.O. Box 218
Grants, NM 87020 505/287-8851
- 36 Western Section 21; 21-15N-13W; 500 tpd
Western Nuclear, Inc., 134 Union Blvd.
Lakewood, CO 80228 303/986-4571

Rio Arriba County

Industrial rocks and minerals

- 1 Cullum; 17-20N-7E; *pumice*; 700 cyd
General Pumice Corp., P.O. Box 5135
Santa Fe, NM 87501 505/982-0411
- 2 Diatomaceous earth mine; 22-21N-7E; *diatomite*; 100 tpd
American Exploration and Management, Inc.,
2432 Jefferson, NE
Albuquerque, NM 87110 505/265-3581
- 3 San Antone; 28-31N-9E; *scoria*; 800 cyd
Colorado Aggregate Co., P.O. Box 106
Mesita, CO 81142 303/672-4408

Sandoval County

Humate

- 1 Alpha; 26-20N-1W; 200 tpd
Alpha NOH Co., 1525 Candelaria Ave., NE
Albuquerque, NM 87107 505/247-1978
- 2 Clod Buster No. 1; 9-19N-1W; 100 tpd
Farm Guard Products, 6130 2nd, NW
Albuquerque, NM 87109 505/345-8441
- 3 San Ysidro No. 1; 16-19N-1W; n.a.
Pioneer Mining, Inc., P.O. Box 14713
Albuquerque, NM 87111 505/255-3561
- 4 Tenorio; 8-14N-1E; 6,000 tpy
Humas Organic Products, P.O. Box 520
Bernalillo, NM 87004 505/867-5973

Industrial rocks and minerals

- 5 Esquire Claims 5-9; 34-18N-3E; *pumice*; 160 cyd
Utility Block Co., 7200 2nd St., NW
Albuquerque, NM 87197 505/344-2368
- 6 San Felipe; 1&2-13N-5E; *gypsum*; 25,000 tpy
Ernest Teeter Trucking; 145 Lamedia Rd., SW
Albuquerque, NM 87105 505/836-4037
- 7 White Mesa; 14-15N-1E; *gypsum*; 180,000 tpy
Pomeroy, Inc., 5137 Russell Dr., NW
Albuquerque, NM 87114 505/897-2120

Uranium

- 8 Rio Puerco; 18-12N-3W; under development
Kerr-McGee Nuclear Corp., P.O. Box 13387
Albuquerque, NM 87112 505/831-4974

San Juan County

Coal

- 1 Navajo; 36-29N-16W; *strip*; 7.0 mty
Utah International, Inc., P.O. Box 155
Fruitland, NM 87416 505/598-5861
- 2 San Juan; 20-30N-15W; *strip*; 1.2 mty
Western Coal Co., P.O. Box 509
Farmington, NM 87401 505/598-5801

Industrial rocks and minerals

- 3 Red Shale; 30-30N-15W; *cinder*; 100 cyd
Garcia and Son, 1103 Canyon Pl.
Farmington, NM 87401 505/455-2541

Uranium

- 4 Enos Johnson; 25N-20W; n.a.
Ray Williams Mining, P.O. Box 487
Sanostee, NM 87461 505/723-2415

Santa Fe County

Industrial rocks and minerals

- 1 Copar; 31&32-20N-7E; *pumice*; 300 cyd
Copar Pumice Co., Inc., P.O. Box 38
Española, NM 87532 505/455-2541
- 2 La Cieniga; 18-16N-8E; *scoria*; 200 cyd
Grego Block Co., P.O. Box 6025
Albuquerque, NM 87197 505/345-4451
- 3 North Red Bird; 31-17N-7E; *scoria*; 30 cyd
Ulibarri Trucking Co., P.O. Box 4
Santa Fe, NM 87501 505/982-2109
- 4 Red Bird; 36-17N-7E; *scoria*; 700 cyd
Colony Materials, P.O. Box 4096
Santa Fe, NM 87501 505/982-8588
- 5 Rosario; 32-15N-7E; *gypsum*; 250 tpd
Dry Wall Supply, Inc., 1805 Irvington Pl.
Denver, CO 80223 303/778-6381

Metal

- 6 Hummingbird; 24-12N-7E; *copper, gold, silver*; n.a.
CAC Mining Co., P.O. Box 2263
Albuquerque, NM 87103 505/243-4529

Sierra County

Industrial rocks and minerals

- 1 Lyda K; 28&29-16S-4W; *fluorite*; idle
Allied Chemical Corp., Route 1
Cave In Rock, IL 62919 618/289-3213

Socorro County

Industrial rocks and minerals

- 1 Blanchard Group; 1&31-6S-5E; *fluorite, barite, lead*; 400 tpd; idle
Hansonburg Operating Co., Val Verde Art Plaza, 203
Manzanares, NE
Socorro, NM 87801 505/835-3082

- 2 Blue Springs; 3-2N-4E; *quartzite*; 800 tpy
Rocky Mountain Stone Co., P.O. Box 6608
Albuquerque, NM 87107 505/344-2611

- 3 Grefco Socorro perlite mine; 28-3S-1W; *perlite*; 500 tpd
Grefco Dicalite Division, P.O. Box 1436
Socorro, NM 87801 505/835-2892

- 4 Twin Peaks; 1-6S-8E; *scoria*; 2,000 tpd
Colorado Aggregate Co., Inc., P.O. Box 106
Mesita, CO 81142 303/672-4408

Metal

- 5 Jones iron mine; 6-4S-10E; *iron*; 200 cyd
LM and M, Inc., P.O. Box 773
Carrizozo, NM 88301 505/648-2540

Taos County

Industrial rocks and minerals

- 1 El Grande; 15&22-29N-9E; *perlite*; 1,200 tpd
Grefco Dicalite Division, P.O. Box 308
Antonito, CO 81120 303/376-5475
- 2 No Agua J-M; 11-29N-9E; *perlite*; 1,850 tpd
Johns-Manville Corp., P.O. Box 338
Antonito, CO 81120 303/376-5484
- 3 Silbrico; 34-29N-10E; *perlite*; 400 tpd
Silbrico Corp., P.O. Box 367
Antonito, CO 81120 303/376-5411
- 4 Tojo; 24&25-23N-12E; *sericite*; 13,000 tpy
Minerals Industrial Commodities of America, Inc.,
P.O. Box 2403
Santa Fe, NM 87501 505/455-2551

Metal

- 5 Moly; 36-28N-13E; *molybdenum*; 65,000 tpd
Molybdenum Corporation of America, Questa Division
Questa, NM 87556 505/586-0212

Union County

Industrial rocks and minerals

- 1 M-19204; 23-30N-29E; *scoria*; 40 cyd
New Mexico Highway Dept., District 4, Grand Ave.
Las Vegas, NM 87701 505/425-7527
- 2 Twin Mountain; 19-30N-29E; *scoria*; 1,100 tpd
Twin Mountain Rock Co., P.O. Box 37
Des Moines, NM 88418 505/278-2694

Valencia County

Industrial rocks and minerals

- 1 U.S. Gypsum; 3-11N-9W; *perlite*; 200 tpd
U.S. Gypsum Co., 209 East Santa Fe
Grants, NM 87020 505/287-4211

Uranium

- 2 Jackpile-Paguete Complex; 2, 4, 5-10N-5W; 26, 33,
35-11N-5W; 5,000 tpd
The Anaconda Co., P.O. Box 638
Grants, NM 87020 505/287-2211

3 J. J. No. 1, 13-11N-5W; 1,000 tpd
Sohio Natural Resources Co., 6001 Marble, NE, Suite 15
Albuquerque, NM 87110 505/242-2762

5 St. Anthony; 30-11N-4W; 315,000 tpy
United Nuclear Corp., P.O. Drawer QQ
Gallup, NM 87301 505/722-6651

4 Mt. Taylor; 24-13N-8W; under development
Gulf Mineral Resources, P.O. Box 1150
Grants, NM 87020 505/287-2951

COMMODITY DIRECTORY

	<i>Barite</i>				
Blanchard Group		Socorro 1			
	<i>Building stone</i>				
East Vado		Doña Ana 4			
	<i>Calcite</i>				
Rainbow Marble		Doña Ana 5			
	<i>Cinder</i>				
Red Dog		McKinley 4			
Red Shale		San Juan 3			
	<i>Clay</i>				
Clay pits		Doña Ana 2			
Fire clay pit 290082		Hidalgo 2			
Hatti		Bernalillo 2			
Henry Clay		Luna 2			
Tijeras		Bernalillo 3			
	<i>Coal</i>				
Amcoal No. 1		McKinley 1			
McKinley		McKinley 3			
Mentmore		McKinley 2			
Navajo		San Juan 1			
San Juan		San Juan 2			
West York Canyon		Colfax 1			
York Canyon No. 1		Colfax 2			
York Canyon Prospect		Colfax 3			
	<i>Copper</i>				
Chino		Grant 8			
Continental		Grant 9			
Ground Hog		Grant 10			
Hummingbird		Santa Fe 6			
Tyrone		Grant 13			
	<i>Diatomite</i>				
Diatomaceous earth mine		Rio Arriba 2			
	<i>Flagstone</i>				
Placer		Luna 3			
	<i>Fluorite</i>				
Blanchard Group		Socorro 1			
Clum		Grant 2			
Greenleaf		Luna 1			
Lyda K		Sierra 1			
	<i>Gold</i>				
Chino		Grant 8			
Ground Hog		Grant 10			
Hummingbird		Santa Fe 6			
Tyrone		Grant 13			
	<i>Gypsum</i>				
Rosario		Santa Fe 5			
San Felipe		Sandoval 6			
White Mesa		Sandoval 7			
	<i>Humate</i>				
Alpha		Sandoval 1			
Clod Buster No. 1		Sandoval 2			
San Ysidro No. 1		Sandoval 3			
Tenorio		Sandoval 4			
	<i>Iron</i>				
Boston Hill		Grant 6			
Continental		Grant 9			
Jones iron mine		Socorro 5			
Smokey		Lincoln 2			
	<i>Lignite</i>				
Blanchard Group		Socorro 1			
Ground Hog		Grant 10			
	<i>Limestone</i>				
Hurley Lime Quarry		Grant 4			
Mathis Lime Quarry		Grant 5			
San Antone Pit		McKinley 5			
Tijeras		Bernalillo 3			
	<i>Manganese</i>				
Boston Hill		Grant 6			
	<i>Molybdenum</i>				
Chino		Grant 8			
Moly		Taos 5			
	<i>Perlite</i>				
El Grande		Taos 1			
Grefco Socorro perlite mine		Socorro 3			
No Agua J-M		Taos 2			
Silbrico		Taos 3			
U.S. Gypsum		Valencia 1			
	<i>Potash</i>				
AMAX		Eddy 1			
Hobbs potash facility		Eddy 2			
IMCC		Eddy 3			
Lea		Lea 1			
Mississippi Chemical		Eddy 4			
Nash Draw		Eddy 5			
PCA		Eddy 6			
	<i>Precious Metal</i>				
Alpha		Lincoln 1			
	<i>Pumice</i>				
Copar		Santa Fe 1			
Cullum		Rio Arriba 1			
Esquire Claims 5-9		Sandoval 5			
	<i>Quartzite</i>				
Blue Springs		Socorro 2			
	<i>Salt</i>				
National Tailings		Lea 2			
Salt Lake		Eddy 7			
Zuni Salt Lake		Catron 1			
	<i>Scoria</i>				
Black Bear Mountain		Doña Ana 1			
Black Bird		Bernalillo 1			
Donna Mountain		Doña Ana 3			
La Cieniga		Santa Fe 2			
M-19204		Union 1			
North Red Bird		Santa Fe 3			
Red Bird		Santa Fe 4			
San Antone		Rio Arriba 3			
Santo Thomas		Doña Ana 6			
Twin Mountain		Union 2			

OWNER DIRECTORY

Allied Chemical Corp.	Sierra 1	L. M. and M.	Socorro 5
Alpha Minerals Processing Corp.	Lincoln 1	Luck Mining Co.	Grant 6
Alpha NOH Co.	Sandoval 1	Mathis and Mathis Mining and Exploration	Grant 5
AMAX Chemical Corp.	Eddy 1	McCauley Mining	Luna 2
Amcoal, Inc.	McKinley 1	Mendoza Red Dog	Grant 3
American Exploration and Management, Inc.	Rio Arriba 2	Minerals Industrial Commodities of America	McKinley 4
American Smelting and Refining Co.	Grant 10	Mississippi Chemical Corp.	Taos 4
Anaconda Co.	Valencia 2	Molybdenum Corporation of America	Eddy 4
Apache Springs Co.	Doña Ana 5	Morton Brothers Cinders and Stone	Taos 5
Bokum Resources Corp.	McKinley 14	National Potash Co.	Doña Ana 3, 6, 8
CAC Mining Co.	Santa Fe 6	New Mexico Highway Department	Lea 1
Carbon Coal Co.	McKinley 2	District 4	Union 1
Cobb Nuclear Corp.	McKinley 21, 32	Phelps Dodge Corp.	Grant 13
Colony Materials	Santa Fe 4	Phillips Uranium Co.	Hidalgo 1, 2
Colorado Aggregate Co.	Rio Arriba 3	Pioneer Mining, Inc.	McKinley 16
Copar Pumice Co., Inc.	Socorro 4	Pittsburg and Midway Coal Co.	Sandoval 3
Crego Block Co.	Santa Fe 1	Pomeroy, Inc.	McKinley 3
Del Norte Masonry Products	Doña Ana 1	Potash Company of America	Sandoval 7
Dresser Minerals	Grant 7	Pueblo Zuni Salt Lake	Eddy 6
Double Eagle	Grant 1	Ranchers Exploration and Development Co.	Catron 1
Dry Wall Supply, Inc.	Santa Fe 5	Reserve Oil and Minerals Corp.	McKinley 8, 11, 12
Duval Corp.	Eddy 5	Rocky Mountain Stone Co.	McKinley 17
El Paso Brick Co.	Doña Ana 2, 7	Silbrico Corp.	Bernalillo 1
Ernest Teeter Trucking	Sandoval 6	Sohio Natural Resources Co.	Socorro 2
Farm Guard Products	Sandoval 2	Summit Minerals	Taos 3
Four Corners Exploration Co.	McKinley 9	Thomas, W. H.	Valencia 3
Gallup Sand and Gravel Co.	McKinley 5	Todilto Exploration and Development Corp.	Grant 12
Garcia and Son	San Juan 3	Turley, F., and Foster, J.	Luna 3
General Pumice Corp.	Rio Arriba 1	Twin Mountain Rock Co.	McKinley 10
Grefco, Inc.	Socorro 3	Ulibarri Trucking Co.	Grant 2
Guillen Construction Co.	Taos 1	United Nuclear Corp.	Luna 1
Gulf Mineral Resources	Doña Ana 4	United Nuclear-Homestake Partners	Union 2
Hansonburg Operating Co.	McKinley 13	United Salt Corp.	Santa Fe 3
Humus Organic Products	Valencia 4	U.S. Gypsum Co.	McKinley 6, 15, 19, 29
Ideal Basic Industries	Socorro 1	Utah International, Inc.	Valencia 5
International Minerals and Chemicals Corp.	Sandoval 4	Utility Block Co.	McKinley 20, 22, 23, 26, 28, 33
Johns-Manville Corp.	Bernalillo 3	UV Industries	Eddy 7
Kaiser Steel Corp.	Eddy 3	Western Coal Co.	Valencia 1
Kennecott Copper Corp.	Taos 2	Western Nuclear, Inc.	San Juan 1
Kerr-McGee Chemical Corp.	Colfax 1, 2, 3	Ray Williams Mining Co.	Sandoval 5
Kerr-McGee Nuclear Corp.	Grant 4, 8	Williams Brine Service	Grant 9
	Eddy 2		San Juan 2
	McKinley 7, 24, 25, 27, 30, 31, 34, 35		McKinley 18, 36
	Sandoval 8		San Juan 4
Kinney Brick Co.	Bernalillo 2		Lea 2
H. N. Larne and Sons	Lincoln 2		

MINE DIRECTORY

Alpha (precious metal)	Lincoln 1	Nash Draw	Eddy 5
Alpha (humate)	Sandoval 1	Navajo	San Juan 1
AMAX	Eddy 1	No Agua J-M	Taos 2
Amcoal No. 1	McKinley 1	Northeast Church Rock	McKinley 15
Ann Lee	McKinley 6	North Red Bird	Santa Fe 4
Black Bear Mountain	Doña Ana 1	Nose Rock No. 1	McKinley 16
Black Bird	Bernalillo 1	PCA	Eddy 6
Blanchard Group	Socorro 1	Placer	Luna 3
Blue Springs	Socorro 2	Poison Canyon	McKinley 17
Boston Hill	Grant 6	Rainbow Marble	Doña Ana 5
Brockman silica mine	Hidalgo 1	Red Bird	Santa Fe 4
Buckhorn	Grant 1	Red Dog	McKinley 4
Chino	Grant 8	Red Shale	San Juan 3
Church Rock No. 1	McKinley 7	Rio Puerco	Sandoval 8
Clay pits	Doña Ana 2	Rosario	Santa Fe 5
Clod Buster No. 1	Sandoval 2	Ruby No. 1	McKinley 18
Clum	Grant 2	Salt Lake	Eddy 7
Continental	Grant 9	San Antone	Rio Arriba 3
Copar	Santa Fe 1	San Antone Pit	McKinley 5
Cullum	Rio Arriba 1	Sandstone	McKinley 19
Diatomaceous earth mine	Rio Arriba 2	San Felipe	Sandoval 6
Donna Mountain	Doña Ana 3	Santo Tomas	Doña Ana 6
Doris	McKinley 8	San Ysidro No. 1	Sandoval 3
East Vado	Doña Ana 4	Section 11	McKinley 20
El Grande	Taos 1	Section 12	McKinley 21
Enos Johnson	San Juan 4	Section 13	McKinley 22
Esquire Claims 5-9	Sandoval 5	Section 15	McKinley 23
Fire clay pit 290082	Hidalgo 2	Section 17	McKinley 24
Flea Doris Extension	McKinley 9	Section 19	McKinley 25
Greenleaf	Luna 1	Section 23	McKinley 26
Grefco Socorro perlite mine	Socorro 3	Section 24	McKinley 27
Ground Hog	Grant 10	Section 25	McKinley 28
Hatti	Bernalillo 2	Section 27 East	McKinley 29
Haystack	McKinley 10	Section 30	McKinley 30
Henry Clay	Luna 2	Section 30 West	McKinley 31
Hobbs potash facility	Eddy 2	Section 32	McKinley 32
Hope	McKinley 11	Section 32	McKinley 33
Hummingbird	Santa Fe 6	Section 35	McKinley 34
Hurley Lime Quarry	Grant 4	Section 36	McKinley 35
IMCC	Eddy 3	Silbrico	Taos 3
Jackpile-Paguate Complex	Valencia 2	Silica Pit	Doña Ana 7
J. J. No. 1	Valencia 3	Smokey	Lincoln 2
Johnny M	McKinley 12	St. Anthony	Valencia 5
Jones iron mine	Socorro 5	Tenorio	Sandoval 4
La Cieniga	Santa Fe 2	Tijeras	Bernalillo 3
Lea	Lea 1	Tojo	Taos 4
Lyda K	Sierra 1	Twin Mountain	Union 2
M-19204	Union 1	Twin Peaks	Socorro 4
Marion Lake	McKinley 13	Tyrone	Grant 13
Marquez Canyon	McKinley 14	U.S. Gypsum	Valencia 1
Mathis Lime Quarry	Grant 5	Volcano No. 1	Doña Ana 8
McKinley	McKinley 3	Western Section 21	McKinley 36
Mentmore	McKinley 2	West York Canyon	Colfax 1
Mississippi Chemical	Eddy 4	White Mesa	Sandoval 7
Moly	Taos 5	York Canyon No. 1	Colfax 2
Mt. Taylor	Valencia 4	York Canyon Prospect	Colfax 3
National Tailings mine	Lea 2	Zuni Salt Lake	Catron 1

Active plants in New Mexico

COUNTY DIRECTORY

Bernalillo County*Industrial rocks and minerals*

- A** American Gypsum Plant; Los Angeles & Jefferson, NE, Albuquerque; *gypsum*; n.a.
American Gypsum Co., P.O. Box 6345
Albuquerque, NM 87107 505/898-4811
- B** Esquire Claims 5-9 Plant; 7200 2nd St., NW, Albuquerque, *pumice*; 160 cyd
Utility Block Co., Inc., P.O. Box 6036
Albuquerque, NM 87107 505/344-2368
- C** Kinney Brick Plant; 18-9N-3E; *clay*; 1,500 tpm
Kinney Brick Co., 100 Prosperity Ave., SE
Albuquerque, NM 87103 505/877-4550

Power

- D** Person Plant; 8-10N-3E; *gas*; 96 mw
Public Service Co. of New Mexico, 2145 Camino del Pueblo
Albuquerque, NM 87103 505/842-2700
- E** Prager Plant; 14-10N-3E; *gas*; 21.4 mw
Public Service Co. of New Mexico, 2145 Camino del Pueblo
Albuquerque, NM 87103 505/842-2700
- F** Reeves Plant; 23-11N-3E; *gas*; 175.0 mw
Public Service Co. of New Mexico, 2145 Camino del Pueblo
Albuquerque, NM 87103 505/842-2700

Chaves County*Power*

- A** Roswell Plant; 3-11S-24E; *gas*; 37.8 mw
Southwest Public Service Co., P.O. Box 1937
Roswell, NM 88201 505/622-2130

Colfax County*Coal*

- A** Kaiser Plant; 34-31N-19E; 550 tpd
Kaiser Steel Corp., P.O. Box 1107
Raton, NM 87740 505/445-5531

Power

- B** Raton Plant; 29(?)-31N-23E; *gas*; 12.0 mw
Raton Public Service Co., P.O. Box 40
Raton, NM 87740 505/445-9861

Doña Ana County*Industrial rocks and minerals*

- A** **El Paso Brick Plant, 15-29S-4E; clay**; 140 tpd
El Paso Brick Co., P.O. Box 12336
El Paso, TX 79912 915/589-4474

Power

- B** Rio Grande Plant; 8&9-29S-4E; *gas and residual oil* (No. 4); 395.1 mw
El Paso Electric Co., P.O. Box 982
El Paso, TX 79999 915/543-5849

Eddy County*Gas*

- A** Artesia Plant; (2-4)-21S-25E; 5.0 mmcf/d
Perry Gas Processors, Inc., P.O. Box 7059
Odessa, TX 79760 915/332-4321
- B** Artesia Plant; 7-18S-28E; 25.0 mmcf/d
Phillips Petroleum Co., P.O. Drawer P
Artesia, NM 88210 505/677-3154
- C** Avalon Plant; 9-21S-27E; 30.0 mmcf/d
Gas Company of New Mexico, P.O. Box 1419
Carlsbad, NM 88220 505/885-2171
- D** Empire Abo Plant; 3-18S-27E; 42.0 mmcf/d
Amoco Production Co., P.O. Drawer A
Levelland, TX 79336 806/894-3163
- E** Indian Basin Plant; 23-21S-23E; 220.0 mmcf/d
Marathon Oil Co., Broadmoor Bldg.
Hobbs, NM 88240 505/393-7106

Industrial rocks and minerals

- F** AMAX Plant; 9-19S-30E; *potash*; 9,200 tpd
AMAX Chemical Corp., P.O. Box 279
Carlsbad, NM 88220 505/885-3157
- G** IMCC Plant; 12-22S-29E; *potash*; 15,000 tpd
International Minerals and Chemicals Corp., P.O. Box 71
Carlsbad, NM 88220 505/887-2871
- H** Kerr-McGee Plant; 4-21S-31E; *potash*; 9,000 tpd
Kerr-McGee Chemical Corp., Hobbs Potash Facility,
P.O. Box 610
Hobbs, NM 88240 505/397-3261
- I** Mississippi Chemical Plant; 12-21S-29E; *potash*; 5,000 tpd
Mississippi Chemical Corp., P.O. Box 101
Carlsbad, NM 88220 505/887-5591
- J** PCA Plant; 4-20S-30E; *potash*; 10,000 tpd
Potash Company of America; P.O. Box 31
Carlsbad, NM 88220 505/887-2844

Power

- K** Carlsbad Plant; 5-21S-27E; *gas*; 65.3 mw
Southwest Public Service Co., P.O. Box 1937
Roswell, NM 88201 505/622-2130

Refineries

- L** Navajo Refining Company Plant; 9-17S-26E; 29,930 b/cd
Navajo Refining Co., P.O. Drawer 159
Artesia, NM 88210 505/746-9851

Grant County

Industrial rocks and minerals

- A** Mathis Lime Plant; 19-17S-12W; *limestone*; 130 tpd
Mathis and Mathis Mining and Exploration, P.O. Box 452
Silver City, NM 88041 505/538-9453

Metal

- B** Hurley Chino Mines Plant; 31-18S-12W; *copper, molybdenum, gold, silver*; concentrator feed: 22,500 tpd; smelter feed: 800 tpd
Kennecott Copper Corp., Chino Mines Division
Hurley, NM 88043 505/537-3381
- C** Tyrone Plant; 14-19S-15W; *copper, gold, silver*; concentrator feed: 48,000 tpd
Phelps Dodge Corp., Tyrone Branch, P.O. Drawer B
Tyrone, NM 88065 505/538-5331
- D** Continental No. 1; 4-17S-12W; *Copper, iron, zinc*; concentrator feed: 3,000 tpd
UV Industries, P.O. Box 406
Hanover, NM 88041 505/534-2225
- E** Continental No. 2; 9-17S-12W; *copper, iron, zinc*; concentrator feed: 5,000 tpd
UV Industries, P.O. Box 406
Hanover, NM 88041 505/534-2225

Power

- F** Hurley Plant; 31-18S-12W; *gas and oil*; 44.0 mw
Kennecott Copper Corp.
Hurley, NM 88043 505/537-3381
- G** Tyrone Plant; 14-19S-15W; *gas and fuel oil*; 45 mw
Phelps Dodge Corp.
Tyrone, NM 88065 505/538-5331

Hidalgo County

Metal

- A** Federal Resources Plant; 23-23S-19W; *copper*; 450 tpd
Federal Resources Corp., P.O. Box A
Lordsburg, NM 88045 505/542-9152
- B** Hidalgo Plant; 36-29S-17W; *copper, gold, silver*; smelter feed: 1,400 tpd
Phelps Dodge Corp., P.O. Box 67
Animas, NM 88020 505/436-2211

Power

- C** Hidalgo Plant; 36-29S-17W; *No. 5 fuel oil*; 30.0 mw
Phelps Dodge Corp., Hidalgo Smelter
Playas, NM 88009 505/436-2211
- D** Lordsburg Plant; 33-22S-18W; *gas and fuel oil*; 51.5 mw
Community Public Service Co., P.O. Box 1160
Silver City, NM 88061 505/538-3768

Lea County

Gas

- A** Antelope Ridge Plant; 34-23S-34E; 20.0 mmcf
Perry Gas Processors, Inc., P.O. Box 7059
Odessa, TX 79760 915/332-4321

- B** Buckeye Plant; 1-18S-34E; 22.5 mmcf
Texaco, Inc., Broadmoor Bldg.
Hobbs, NM 88240 505/393-7191
- C** Denton Plant; 2-15S-37E; 25.0 mmcf
Tipperary Land and Exploration Co., 500 West Illinois
Midland, TX 77701 915/684-7151
- D** El Mar No. 26 Plant; 25-26S-32E; n.a.
Continental Oil Co., P.O. Box 460
Hobbs, NM 88240 505/393-4141
- E** Eunice Plant; 5-21S-36E; 152.0 mmcf
El Paso Natural Gas Co., P.O. Box 127
Oil Center, NM 88266 505/394-3255
- F** Eunice Plant; 5-21S-36E; 88.0 mmcf
Phillips Petroleum Co., P.O. Box 66
Oil Center, NM 88266 505/397-2363
- G** Eunice Plant; 3-22S-37E; n.a.
Warren Petroleum Co., P.O. Box 1197
Eunice, NM 88231 505/394-2534
- H** Eunice No. 1 Plant; 27-22S-37E; n.a.
Getty Oil Co., P.O. Box 1137
Eunice, NM 88231 505/394-2566
- I** Eunice No. 2 Plant; 28-21S-37E; n.a.
Getty Oil Co., P.O. Box 1137
Eunice, NM 88231 505/394-2566
- J** Hobbs Plant; 6-19S-37E; 220.0 mmcf
Northern Natural Gas Co., P.O. Box 2370
Hobbs, NM 88240 505/393-5109
- K** Hobbs Plant; 4-19S-38E; 38.0 mmcf
Phillips Petroleum Co., P.O. Box 2130
Hobbs, NM 88240 505/393-5121
- L** Jal No. 1 Plant; 6&7-26S-37E; 310.0 mmcf
El Paso Natural Gas Co., P.O. Box 1384
Jal, NM 88252 505/395-2551
- M** Jal No. 3 Plant; 33-24S-37E; 232.0 mmcf
El Paso Natural Gas Co., P.O. Box 1384
Jal, NM 88252 505/395-2551
- N** Jal No. 4 Plant; 31&32-23S-37E; 185.0 mmcf
El Paso Natural Gas Co., P.O. Box 1384
Jal, NM 88252 505/395-2551
- O** Lee (Buckeye) Plant; 36-17S-35E; 85.0 mmcf
Phillips Petroleum Co., West Star Route
Lovington, NM 88260 505/393-3664
- P** Lovington Plant; 31-16S-37E; 10.0 mmcf
Phillips Petroleum Co., P.O. Box 2130
Hobbs, NM 88240 505/393-5121
- Q** Lusk Plant; 19-19S-32E; 60.0 mmcf
Phillips Petroleum Co., P.O. Box 1297
Maljamar, NM 88264 505/885-4270
- R** Maljamar Plant; 21-17S-32E; 26.0 mmcf
Continental Oil Co., P.O. Box 1206
Maljamar, NM 88264 505/676-2330
- S** Monument Plant; 1-20S-36E; n.a.
El Paso Natural Gas Co., P.O. Drawer C
Monument, NM 88265 505/395-2551
- T** Monument Plant; 36-19S-36E; 85.0 mmcf
Warren Petroleum Co., P.O. Box 67
Monument, NM 88265 505/393-2833
- U** Saunders Plant; 34-14S-33E; 30.0 mmcf
Warren Petroleum Co., P.O. Box 966
Lovington, NM 88260 505/396-3221

- V** Tatum Plant; 18-12S-38E; 10.0 mmcf/d
Warren Petroleum Co., P.O. Box 308
Tatum, NM 88267 505/398-3520
- W** Tuco Hobbs Plant; 28-18S-36E; 75.0 mmcf/d
Tuco, Inc., P.O. Box 335
Hobbs, NM 88240 505/397-3634
- X** Vada Plant; 23-10S-33E; n.a.
Warren Petroleum Co., P.O. Box 905
Tatum, NM 88267 505/398-5566
- Y** Wilson Plant; 5-21S-36E; 6.0 mmcf/d
Phillips Petroleum Co., P.O. Box 66
Oil Center, NM 88266 505/397-2363

Industrial rocks and minerals

- Z** National Potash Plant; 18-20S-32E; *potash*; 6,000 tpd
National Potash Co., P.O. Box 731
Carlsbad, NM 88220 505/885-3134

Power

- AA** Cunningham Station; 28-18S-36E; *gas*; 290 mw
Southwest Public Service Co., P.O. Box 1937
Roswell, NM 88201 505/622-2130
- BB** Lovington Plant; 32-15S-36E; *gas and fuel oil*; 70 mw
Lea County Electric Coop., Drawer 1447
Lovington, NM 88260 505/396-4101
- CC** Maddox Plant; 25-18S-36E; *gas*; 184.0 mw
New Mexico Electric Service Co., Carlsbad Hwy.
Hobbs, NM 88240 505/393-5156

Refineries

- DD** Lovington Plant; 36-16S-36E; 37,000 b/sd
Famariss Oil and Refining Co., 501 North Linam
Hobbs, NM 88240 505/393-6116
- EE** Monument Plant; 36-19S-36E; 5,400 b/sd
Famariss Oil and Refining Co., 501 North Linam
Hobbs, NM 88240 505/393-6116

Lincoln County*Metal*

- A** Alpha Plant; 5-5S-12E; *various metals*; 1,500 tpd
Alpha Minerals Processing Corp., P.O. Box 96
Carrizozo, NM 88301 505/648-2406
- B** Carrizozo Plant; 1-8S-10E; *iron*; 500 tpd
LM and M, Inc., P.O. Box 773
Carrizozo, NM 88301 505/648-2540

Luna County*Metal*

- A** Deming Plant; 20-23S-9W; *lead, zinc*; concentrator feed:
700 tpd
ASARCO, P.O. Box 1037
Deming, NM 88030 505/546-9292
- B** Deming Plant; 26-23S-9W; *manganese*; 300 tpd
Southwest American Minerals, Inc., P.O. Box 389
Deming, NM 88030 505/546-7415

McKinley County*Coal*

- A** Carbon Coal Plant; 4-15N-19W; *coal*; 420 tpd
Carbon Coal Co., P.O. Box 481
Mentmore, NM 87319 505/722-6646

Gas

- B** Wingate Plant; 16-15N-17W; n.a.
El Paso Natural Gas Co., P.O. Box 368
Gallup, NM 87301 505/863-3581

Refineries

- C** Ciniza Plant; 33-15N-15W; 19,000 b/sd
Shell Oil Co., Wingate Star Route
Gallup, NM 87301 505/722-3833

Uranium

- D** Church Rock Plant; 2-16N-16W; 3,000 tpd
United Nuclear Corp., P.O. Drawer QQ
Gallup, NM 87301 505/722-6651
- E** Kerr-McGee Plant; 31-14N-10W; 7,000 tpd
Kerr-McGee Nuclear Corp., P.O. Box 218
Grants, NM 87020 505/287-8851

Quay County*Power*

- A** Tucumcari Plant; 13(?)-11N-30E; *gas and diesel fuel*;
10.0 mw
Tucumcari Power & Light Dept., 215 E. Center
Tucumcari, NM 88401 505/461-3451

Rio Arriba County*Gas*

- A** Lybrook Plant; 11-23N-7W; 70.0 mmcf/d
Southern Union Co., P.O. Box 398
Bloomfield, NM 87413 505/632-3311

Industrial rocks and minerals

- B** General Pumice Plant; 17-20N-7E; *pumice*; 350 cyd
General Pumice Corp., P.O. Box 5135
Santa Fe, NM 87502 505/982-0411

Roosevelt County*Gas*

- A** Bluit Plant; 15-8S-36E; 37.0 mmcf/d
Cities Service Oil Co.
Milnesand, NM 88125 505/675-2311

Sandoval County*Power*

- A** Algodones Plant; 1-13N-4E; *gas*; 45.0 mw
Plains Electric Gen. & Trans. Coop., Inc.,
2401 Aztec Rd., NE
Albuquerque, NM 87107 505/345-1881

San Juan County

Power

- A** Animas Plant; 15-29N-13W; *gas*; 32.0 mw
Farmington Electric Utility System, P.O. Box 900
Farmington, NM 87401 505/325-1981
- B** San Juan Plant; 20-30N-15W; *coal*; 652.0 mw
Public Service Co. of New Mexico, 2415 Camino del
Pueblo
Albuquerque, NM 87103 505/842-2700
- C** Four Corners Plant; 36-29N-16W; *coal*; 2,085.0 mw
Arizona Public Service Co., P.O. Box 355
Fruitland, NM 87416 505/598-5812
- D** Blanco Plant; 14-29N-11W; 558.0 mmcf/d
El Paso Natural Gas Co., P.O. Box 990
Farmington, NM 87401 505/325-2841
- E** Chaco Plant; 16-26N-12W; 594.0 mmcf/d
El Paso Natural Gas Co., P.O. Box 990
Farmington, NM 87401 505/325-2841
- F** Kutz Plant No. 1; 13-28N-11W; 100.0 mmcf/d
Southern Union Co., P.O. Box 398
Bloomfield, NM 87413 505/632-3311
- G** Kutz Plant No. 2; 13-28N-11W; 80.0 mmcf/d
Southern Union Co., P.O. Box 398
Bloomfield, NM 87413 505/632-3311
- H** San Juan Plant; 1-29N-15W; 71.0 mmcf/d
El Paso Natural Gas Co., P.O. Box 990
Farmington, NM 87401 505/325-2841

Refinery

- I** Bloomfield Plant; 27-29N-11W; 15,500 b/sd
Plateau, Inc., 1921 Bloomfield Blvd.
Farmington, NM 87401 505/325-1921
- J** Bloomfield Plant; 32-29N-11W; 6,500 b/sd
Thriftway Co., P.O. Box 1367
Farmington, NM 87401 505/327-5156
- K** Farmington Plant; 27-29N-12W; n.a.
Giant Refinery, Inc., Bloomfield Highway
Farmington, NM 87401 505/632-3306
- L** Kirtland Plant; 15-29N-13W; 2,500 b/sd
Caribou Four Corners, Inc., Shiprock Highway
Farmington, NM 87401 505/598-5332

San Miguel County

Power

- A** Las Vegas Plant; 16N-16E; *gas*; 20.0 mw (standby)
Public Service Co. of New Mexico, 2415 Camino del
Pueblo
Albuquerque, NM 87103 505/842-2700

Santa Fe County

Industrial rocks and minerals

- A** Copar Plant; 31&32-20N-7E; *pumice*; 300 cyd
Copar Pumice, Inc., P.O. Box 38
Española, NM 87532 505/455-2541

- B** James H. Rhodes and Co. Plant; Santa Fe & Zia; *pumice*;
25 tpd
James H. Rhodes and Co., Galisteo Rd.
Santa Fe, NM 87502 505/983-4954
- C** M.I.C.A. Plant; Pojoaque Reservation; *mica*; 50 tpd
Minerals Industrial Commodities of America, Inc.,
P.O. Box 2403
Santa Fe, NM 87501 505/455-2551

Metal

- D** CAC Plant; 24-12N-7E; *copper, gold, silver*; 50 tpd
CAC Mining Co., P.O. Box 2263
Albuquerque, NM 87103 505/243-4529
- E** San Pedro Plant; 27-12N-7E; *copper*; concentrator feed:
250 tpd
San Pedro Mining Corp., 525 San Pedro, NE, Suite 102
Albuquerque, NM 87108 505/265-3526

Power

- F** Santa Fe Plant; 34(?)-17N-9E; *gas*; 11.4 mw
Public Service Co. of New Mexico; 2415 Camino del
Pueblo
Albuquerque, NM 87103 505/842-2700

Sierra County

Power

- A** Elephant Butte Plant; 30-13S-3W; *hydro*; 24.3 mw
U.S. Bureau of Reclamation, Rio Grande Project,
Power Field Div.
Truth or Consequences, NM 87901 505/894-6661

Socorro County

Industrial rocks and minerals

- A** Grefco perlite plant; 27-3S-1W; *perlite*; 55 tph
Grefco Dicalite Division, P.O. Box 1436
Socorro, NM 87801 505/835-2892
- B** Hansonburg Plant; 1-6S-5E; *fluorite, barite, lead*; 400 tpd; idle
Hansonburg Operating Co., Val Verde Art Plaza,
203 Manzanares, NE
Socorro, NM 87801 505/835-3082

Taos County

Industrial rocks and minerals

- A** Grefco No Agua Plant; 15-29N-9E; *perlite*; 50 tph
Grefco Dicalite Division, P.O. Box 308
Antonito, CO 81120 303/376-5479
- B** Johns-Manville Plant; 11-29N-9E; *perlite*; 1,850 tpd
Johns-Manville Perlite Corp., P.O. Box 177
Antonito, CO 81120 303/376-5484
- C** Silbrico Plant; 34-29N-10E; *perlite*; 350 tpd
Silbrico Corp., P.O. Box 367
Antonito, CO 81120 303/376-5411

Metal

- D** Molybdenum Corp. Plant; 29N-14E; *molybdenum*;
concentrator feed: 16,000 tpd
Molybdenum Corporation of America, Questa Division
Questa, NM 87556 505/586-0212

Union County

Power

- A** Clayton Plant; 34-26N-35E; *gas and fuel oil*; 6.0 mw
Clayton Light and Water Plant, 320 S. First Ave.
Clayton, NM 88415 505/374-2311

Valencia County

Industrial rocks and minerals

- A** U.S. Gypsum Plant; 25-11N-10W; *perlite*; 20 tph
U.S. Gypsum Co., P.O. Box 216
Grants, NM 87020 505/289-4211

Uranium

- B** Anaconda Plant; 24-12N-11W; 6,000 tpd
The Anaconda Co., P.O. Box 638
Grants, NM 87020 505/287-2211
- C** SOHIO Plant; 13-11N-5W; 1,660 tpd
SOHIO Petroleum Co., 6001 Marble, NE, Suite 15
Albuquerque, NM 87110 505/242-2762
- D** United Nuclear-Homestake Plant; 26-12N-10W; 3,500 tpd
United Nuclear-Homestake Partners, P.O. Box 98
Grants, NM 87020 505/287-4456

COMMODITY DIRECTORY

	<i>Burite</i>			<i>Gypsum</i>	
Hansonburg Plant		Socorro B	American Gypsum Plant		Bernalillo A
	<i>Clay</i>			<i>Iron</i>	
El Paso Brick Plant		Doña Ana A	Carrizozo Plant		Lincoln B
Kinney Brick Plant		Bernalillo C	Continental No. 1		Grant D
	<i>Coal</i>		Continental No. 2		Grant E
Carbon Coal Plant		McKinley A		<i>Lens</i>	
Kaiser Plant		Colfax A	Deming Plant		Luna A
	<i>Copper</i>		Hansonburg Plant		Socorro B
CAC Plant		Santa Fe D		<i>Limestone</i>	
Continental No. 1		Grant D	Mathis Lime Plant		Grant A
Continental No. 2		Grant E		<i>Manganese</i>	
Federal Resources Plant		Hidalgo A	Deming Plant		Luna B
Hidalgo Plant		Hidalgo B		<i>Mica</i>	
Hurley Chino Mines Plant		Grant B			Santa Fe C
San Pedro Plant		Santa Fe E	M.I.C.A. Plant		
Tyrone Plant		Grant C		<i>Molybdenum</i>	
	<i>Fluorite</i>		Hurley Chino Mines Plant		Grant B
Hansonburg Plant		Socorro B	Molybdenum Corp. Plant		Taos D
	<i>Gold</i>			<i>Perlite</i>	
Antelope Ridge Plant		Lea A	Grefco No Agua Plant		Taos A
Artesia Plant		Eddy A	Grefco Socorro Plant		Socorro A
Artesia Plant		Eddy B	Johns-Manville Plant		Taos B
Avalon Plant		Eddy C	Silbrico Plant		Taos C
Blanco Plant		San Juan D	U.S. Gypsum Plant		Valencia A
Bluit Plant		Roosevelt A		<i>Potash</i>	
Buckeye Plant		Lea B	AMAX Plant		Eddy F
Chaco Plant		San Juan E	IMCC Plant		Eddy G
Denton Plant		Lea C	Kerr-McGee Plant		Eddy H
El Mar No. 26 Plant		Lea D	Mississippi Chemical Plant		Eddy I
Empire Abo Plant		Eddy D	National Potash Plant		Lea Z
Eunice Plant		Lea E, F, G	PCA Plant		Eddy J
Eunice No. 1 Plant		Lea H		<i>Quartz</i>	
Eunice No. 2 Plant		Lea I	Algodones Plant		Sandoval A
Hobbs Plant		Lea J, K	Animas Plant		San Juan A
Indian Basin Plant		Eddy E	Carlsbad Plant		Eddy K
Jal No. 1 Plant		Lea L	Clayton Plant		Union A
Jal No. 3 Plant		Lea M	Cunningham Station		Lea AA
Jal No. 4 Plant		Lea N	Elephant Butte Plant		Sierra A
Kutz Plant No. 1		San Juan F	Four Corners Plant		San Juan C
Kutz Plant No. 2		San Juan G	Hidalgo Plant		Hidalgo C
Lee (Buckeye) Plant		Lea O	Hurley Plant		Grant F
Lovington Plant		Lea P	Las Vegas Plant		San Miguel A
Lusk Plant		Lea Q	Lordsburg		Hidalgo D
Lybrook Plant		Rio Arriba A	Lovington Plant		Lea BB, DD
Maljamar Plant		Lea R	Maddox Plant		Lea CC
Monument Plant		Lea S, T	Person Plant		Bernalillo D
San Juan Plant		San Juan H	Prager Plant		Bernalillo E
Saunders Plant		Lea U	Raton Plant		Colfax B
Saunders Plant		Lea V	Reeves Plant		Bernalillo F
Tatum Plant		Lea W	Rio Grande Plant		Doña Ana B
Tuco Hobbs Plant		Lea X	Roswell Plant		Chaves A
Vada Plant		Lea Y	San Juan Plant		San Juan B
Wilson Plant		McKinley B	Santa Fe Plant		Santa Fe F
Wingate Plant			Tucumcari Plant		Quay A
	<i>Gravel</i>		Tyrone Plant		Grant G
CAC Plant		Santa Fe D			
Hidalgo Plant		Hidalgo B			
Hurley Chino Mines Plant		Grant B			
Tyrone Plant		Grant C			

Precious Metal

Uranium

Alpha Plant	Lincoln A
<i>Pumice</i>	
Copar Plant	Santa Fe A
Esquire Claims 5-9 Plant	Bernalillo B
General Pumice Plant	Rio Arriba B
James H. Rhodes and Company	Santa Fe B

Anaconda Plant	Valencia B
Church Rock Plant	McKinley D
Kerr-McGee Plant	McKinley E
SOHIO Plant	Valencia C
United Nuclear-Homestake Plant	Valencia D

<i>Silver</i>	
CAC Plant	Santa Fe D
Hidalgo Plant	Hidalgo B
Hurley Chino Mines Plant	Grant B
Tyrone Plant	Grant C

<i>Zinc</i>	
Continental No. 1	Grant D
Continental No. 2	Grant E
Deming Plant	Luna A

OWNER DIRECTORY

Alpha Minerals Processing Corp.	Lincoln A	Minerals Industrial Commodities	Santa Fe C
AMAX Chemical Corp.	Eddy F	of America, Inc.	Eddy I
American Gypsum Co.	Bernalillo A	Mississippi Chemical Corp.	Taos D
AMOCO Production Co.	Eddy D	Molybdenum Corporation of America	Lea Z
Anaconda Co.	Valencia B	National Potash Co.	Eddy L
Arizona Public Service Co.	San Juan C	Navajo Refining Co.	Lea CC
ASARCO	Luna A	New Mexico Electric Service Co.	Lea J
CAC Mining Co.	Santa Fe D	Northern Natural Gas Co.	Eddy A
Carbon Coal Co.	McKinley A	Perry Gas Processors, Inc.	Lea A
Caribou Four Corners, Inc.	San Juan L	Phelps Dodge Corp.	Grant C, G
Cities Service Oil Co.	Roosevelt A	Phillips Petroleum Co.	Hidalgo B, C
Clayton Light and Water Plant	Union A	Plains Electric Gen. and Trans. Coop., Inc.	Eddy B
Community Public Service Co.	Hidalgo D	Plateau, Inc.	Lea F, K, O, B, Q, Y
Continental Oil Co.	Lea D, R	Potash Company of America	Sandoval A
Copar Pumice, Inc.	Santa Fe A	Public Service Company of New Mexico	San Juan I
El Paso Brick Co.	Doña Ana A	Raton Public Service Co.	Eddy J
El Paso Electric Co.	Doña Ana B	San Pedro Mining Corp.	Bernalillo D, E, F
El Paso Natural Gas Co.	Lea E, L, M, N, S	Shell Oil Co.	San Miguel A
Famariss Oil and Refining Co.	McKinley B	Silbrico Corp.	San Juan B
Farmington Electric Utility System	San Juan E, H	SOHIO Petroleum Corp.	Santa Fe F
Federal Resources Corp.	Lea DD, EE	Southern Union	Colfax B
Gas Company of New Mexico	San Juan A	Southwest American Minerals, Inc.	Santa Fe E
General Pumice Corp.	Hidalgo A	Southwest Public Service Co.	McKinley C
Getty Oil Co.	Eddy C	Texaco, Inc.	Taos C
Giant Refinery, Inc.	Rio Arriba B	Thriftway Co.	Valencia C
Grefco Dicalite Division	Lea H, I	Tipperary Land and Exploration Co.	Rio Arriba A
Hansonburg Operating Co.	San Juan K	Tuco, Inc.	San Juan F, G
International Minerals and	Socorro A	Tucumcari Power and Light Dept.	Luna B
Chemicals Corp.	Socorro B	United Nuclear-Homestake Partners	Chaves A
James H. Rhodes and Company	Eddy G	U.S. Bureau of Reclamation	Eddy K
Johns-Manville Perlite Corp.	Santa Fe B	U.S. Gypsum Co.	Lea AA
Kaiser Steel Corp.	Taos B	United Nuclear Corp.	Lea B
Kennecott Copper Corp.	Colfax A	Utility Block Co.	San Juan J
Kerr-McGee Chemical Corp.	Grant B, F	UV Industries	Lea C
Kerr-McGee Nuclear Corp.	Eddy H	Warren Petroleum Co.	Lea W
Kinney Brick Co.	McKinley E		Quay A
Lea County Electric Coop.	Bernalillo C		Valencia D
LM and M, Inc.	Lea BB		Sierra A
Marathon Oil Co.	Lincoln B		Valencia A
Mathis and Mathis Mining	Eddy E		McKinley D
and Exploration	Grant A		Bernalillo B
			Grant D, E
			Lea G, T, U, V, X

PLANT DIRECTORY

Algodones
Alpha
AMAX
American Gypsum
Anaconda
Animas
Antelope Ridge
Artesia
Artesia
Avalon
Blanco
Bloomfield
Bloomfield
Bluit
Buckeye
CAC
Carbon Coal
Carlsbad
Carrizozo
Chaco
Church Rock
Ciniza
Clayton
Continental No. 1
Continental No. 2
Copar Plant
Cunningham Station
Deming
Deming
Denton
Elephant Butte
El Mar No. 26
El Paso Brick
Empire Abo
Esquire Claims 5-9
Eunice
Eunice
Eunice
Eunice No. 1
Eunice No. 2
Farmington
Federal Resources
Four Corners
General Pumice
Grefco No Agua
Grefco perlite
Hansonburg
Hidalgo (metals)
Hidalgo (power)
Hobbs
Hobbs
Hurley Chino Mines
Hurley
IMCC
Indian Basin
Jal No. 1
Jal No. 3
Jal No. 4
James H. Rhodes and Co.
Johns-Manville
Kaiser
Kerr-McGee (potash)

Sandoval **A**
Lincoln **A**
Eddy **F**
Bernalillo **A**
Valencia **B**
San Juan **A**
Lea **A**
Eddy **A**
Eddy **B**
Eddy **C**
San Juan **D**
San Juan **I**
San Juan **J**
Roosevelt **A**
Lea **B**
Santa Fe **D**
McKinley **A**
Eddy **K**
Lincoln **B**
San Juan **E**
McKinley **D**
McKinley **C**
Union **A**
Grant **D**
Grant **E**
Santa Fe **A**
Lea **AA**
Luna **A**
Luna **B**
Lea **C**
Sierra **A**
Lea **D**
Doña Ana **A**
Eddy **D**
Bernalillo **B**
Lea **E**
Lea **F**
Lea **G**
Lea **H**
Lea **I**
San Juan **K**
Hidalgo **A**
San Juan **C**
Rio Arriba **B**
Taos **A**
Socorro **A**
Socorro **B**
Hidalgo **B**
Hidalgo **C**
Lea **J**
Lea **K**
Grant **B**
Grant **F**
Eddy **G**
Eddy **E**
Lea **L**
Lea **M**
Lea **N**
Santa Fe **B**
Taos **B**
Colfax **A**
Eddy **H**

Kerr-McGee (uranium)
Kinney Brick
Kirtland
Kutz No. 1
Kutz No. 2
Las Vegas
Lee (Buckeye)
Lordsburg
Lovington (gas)
Lovington (power)
Lovington (refinery)
Lusk
Lybrook
Maddox
Maljamar
Mathis Lime
M.I.C.A. Plant
Mississippi Chemical
Molybdenum Corp.
Monument (gas)
Monument (gas)
Monument (refinery)
National Potash Plant
Navajo Refining Co.
PCA
Person
Prager
Raton
Reeves
Rio Grande
Roswell
San Juan (gas)
San Juan (power)
San Pedro
Santa Fe
Saunders
Silbrico
SOHIO
Tatum
Tuco Hobbs
Tucumcari
Tyrone (metals)
Tyrone (power)
United Nuclear-Homestake
U.S. Gypsum
Vada
Wilson
Wingate

McKinley **E**
Bernalillo **C**
San Juan **L**
San Juan **F**
San Juan **G**
San Miguel **A**
Lea **O**
Hidalgo **D**
Lea **P**
Lea **BB**
Lea **DD**
Lea **Q**
Rio Arriba **A**
Lea **CC**
Lea **R**
Grant **A**
Santa Fe **C**
Eddy **I**
Taos **D**
Lea **S**
Lea **T**
Lea **EE**
Lea **Z**
Eddy **L**
Eddy **J**
Bernalillo **D**
Bernalillo **E**
Colfax **B**
Bernalillo **F**
Doña Ana **B**
Chaves **A**
San Juan **H**
San Juan **B**
Santa Fe **E**
Santa Fe **F**
Lea **U**
Taos **C**
Valencia **C**
Lea **V**
Lea **W**
Quay **A**
Grant **C**
Grant **G**
Valencia **D**
Valencia **A**
Lea **X**
Lea **Y**
McKinley **B**

Type faces: Text in 10-pt Baskerville, leaded 1 point
Directories in 8-pt Baskerville, leaded 1 point
Display heads in 18-pt. Baskerville

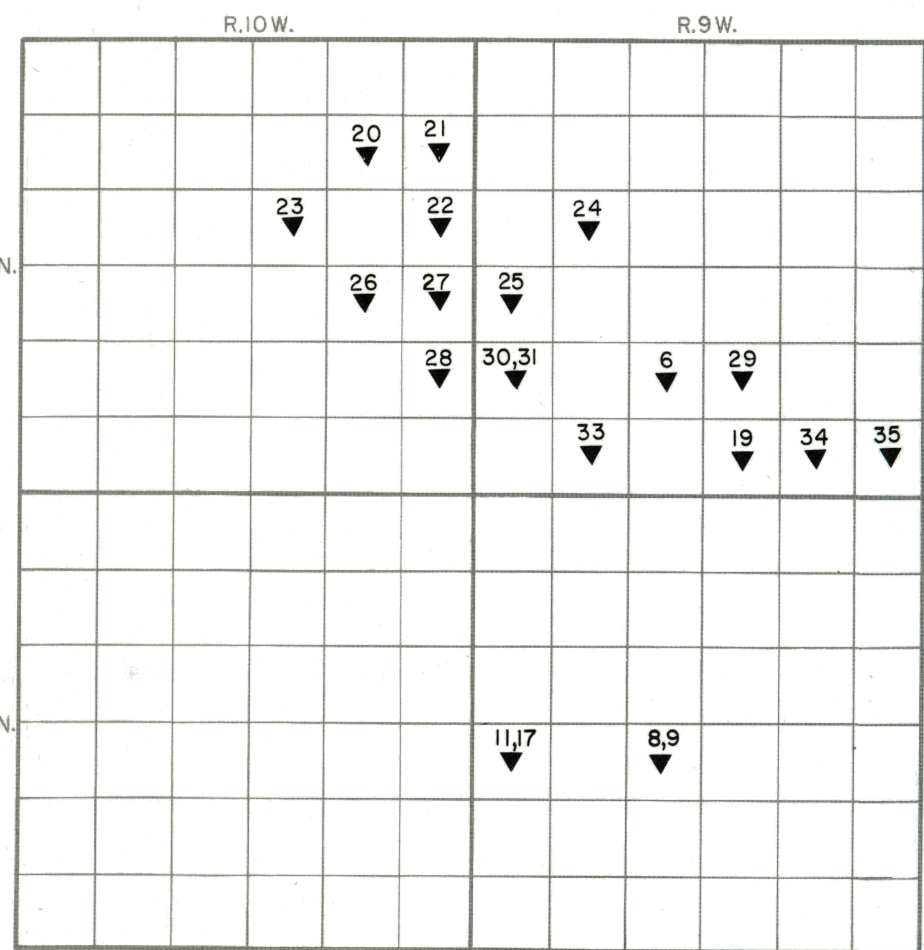
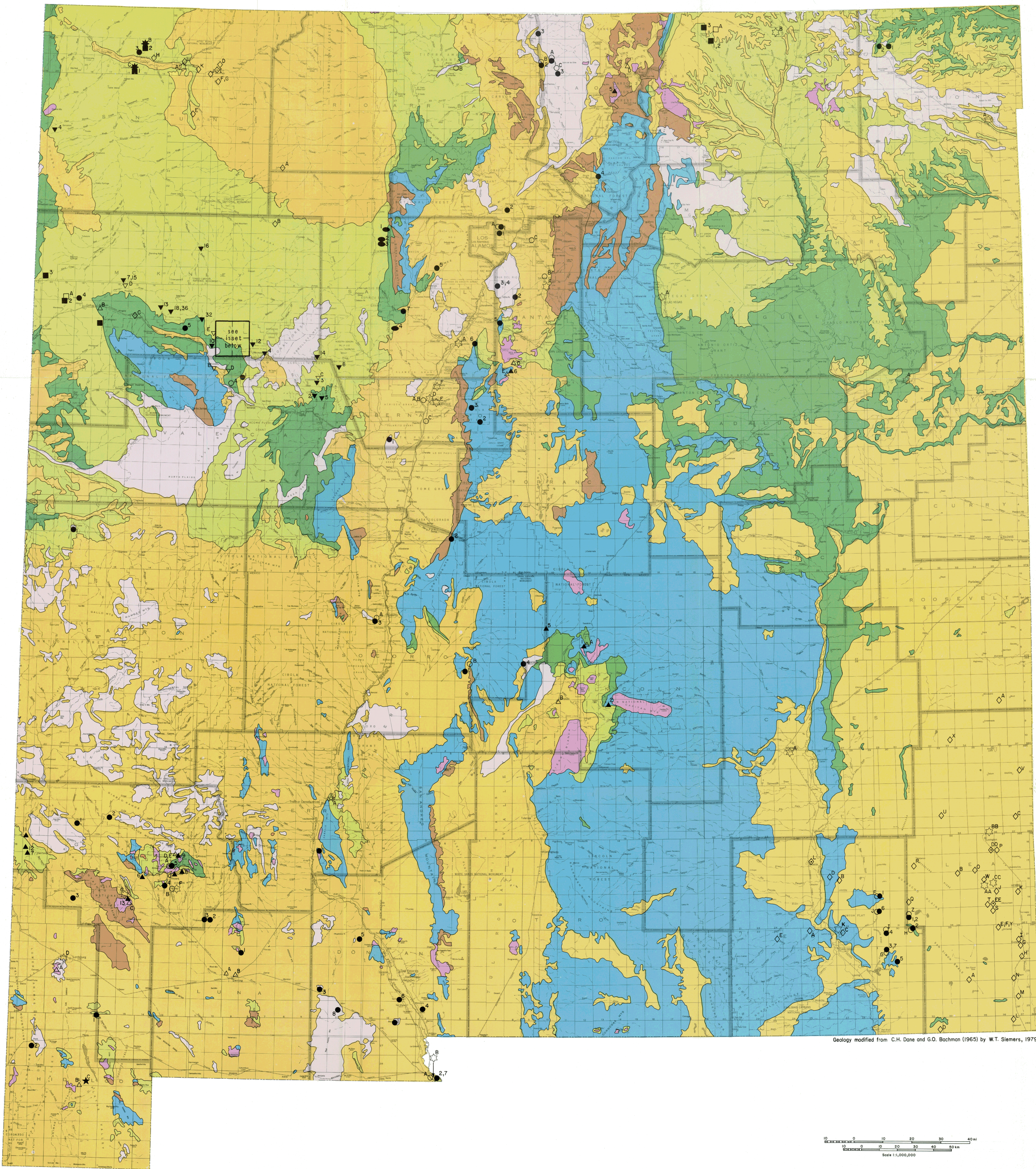
Presswork: Miehle Single Color Offset

Binding: Saddlestitched

Paper: 60-lb. White Offset

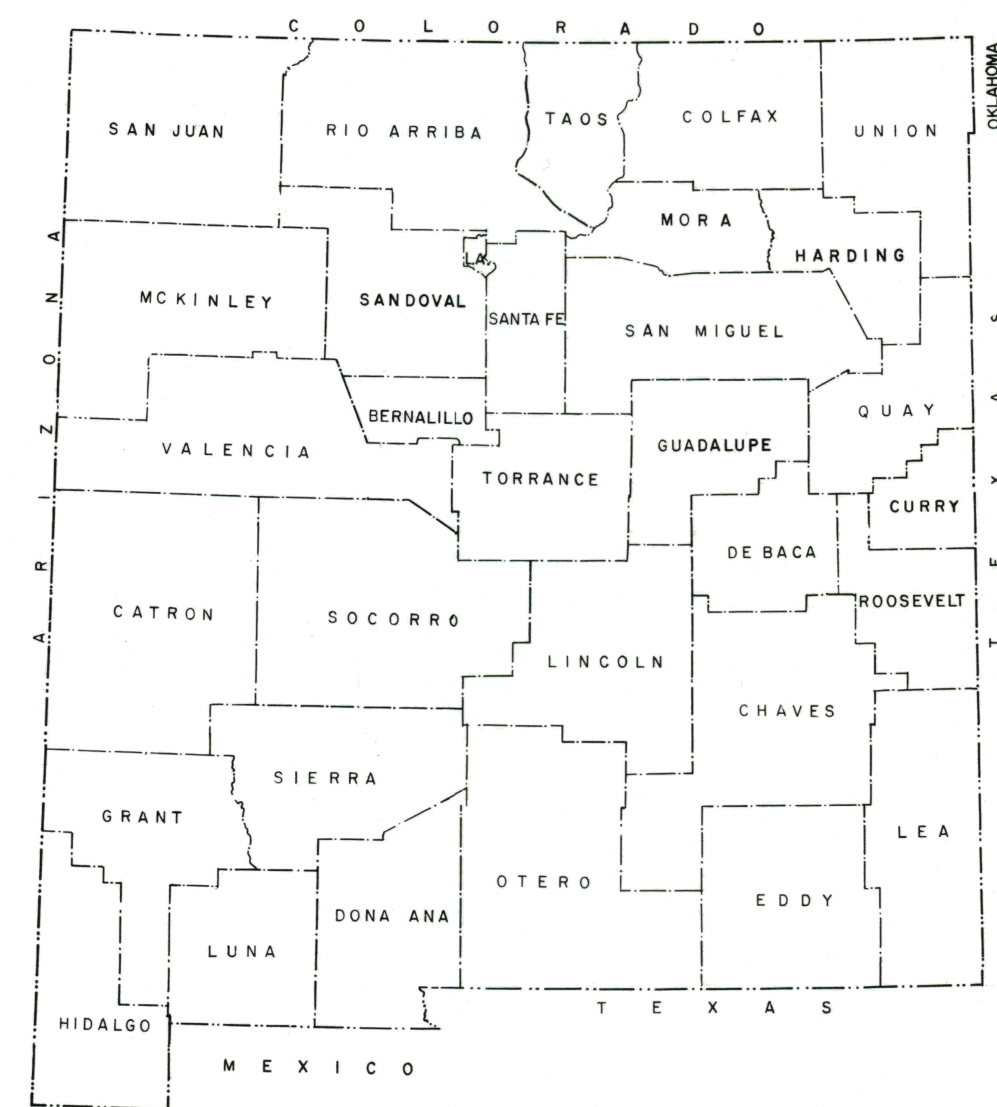
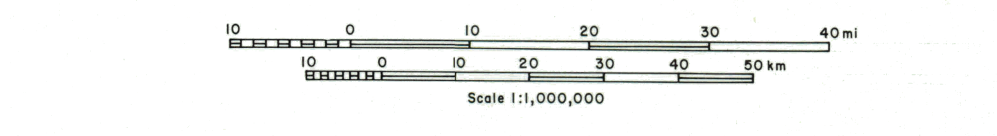
Ink: Text—Black

Press run: 1,200



- TIME/STRATIGRAPHIC UNITS**
- Tertiary and Cretaceous intrusives
 - Quaternary, Tertiary, and Cretaceous basalts
 - Quaternary and Tertiary (excluding intrusives and basalts)
 - Cretaceous (excluding intrusives and basalts)
 - Jurassic and Triassic
 - Paleozoic
 - Precambrian

- SYMBOLS**
- Metallic minerals**
- ² mine
 - ^B mill or plant
- Uranium**
- ⁵ mine
 - ^D mill or plant
- Coal**
- ⁴ mine
 - ^A mill or plant
- Industrial rocks and minerals**
- ³ mine
 - ^C mill or plant
 - ² humate mine
 - ^A Oil refinery
 - ^B Gas-processing plant
- Electricity-generating plant**
- ^A - gas fired
 - ^D - oil fired
 - ^H - coal fired
 - ^B - hydro-powered



Mines, processing plants, and power plants in New Mexico

by W.T. Siemers and G.S. Austin 1979

