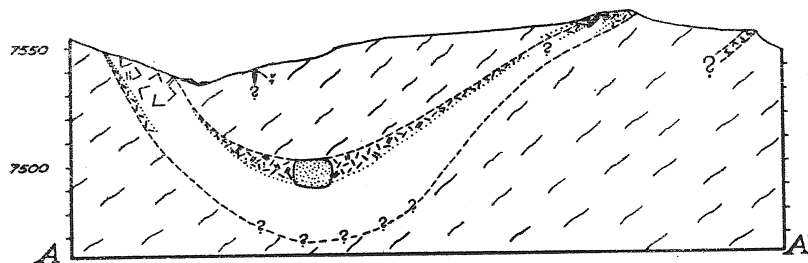
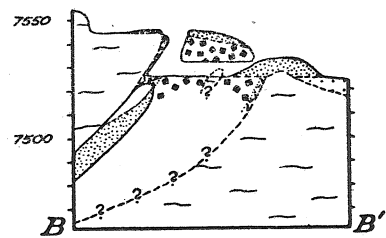


EXPLANATION



Section along line A-A'



Section along line B-B'

0 10 50 100

Scale in feet

Contour interval 10'

Datum is mean sea level
(altitude of point P estimated from U.S. Forest Service map)

Geology restored in main cut

- Dump material and backfill
- Alluvium
- Medium-grained microcline-quartz pegmatite
- Very coarse-grained microcline-quartz pegmatite
- Blocky microcline
- Massive quartz
- Quartz-platy albite pegmatite
- Albite-rich pegmatite
- Mica concentration (shown as overprint on other patterns)
- Quartzite, moderately micaceous (pattern shown in section)
- Quartzite, impregnated with much mica
- Strike and dip of foliation, showing trend and pitch of linear element
- Pitch of minor fold axis
- Contact, showing dip; dashed where approximate
- Contact between pegmatite units
- Limit of zone of mica impregnation in quartzite
- Edge of cut or pit