

EXPLANATION

Dump material and backfill

Andesitic volcanic rocks

Medium- to coarse-grained microcline-quartz pegmatite, with concentrations of albite and mica

Blocky microcline

Massive quartz

Mica concentration (shown as overprint on other patterns)

Micaceous quartzite (pattern shown in sections and underground plan only)

Quartzite, impregnated with microcline and much mica

Strike and dip of foliation, showing trend and pitch of linear element

Contact, showing dip; dashed where approximate

Contact between pegmatite units

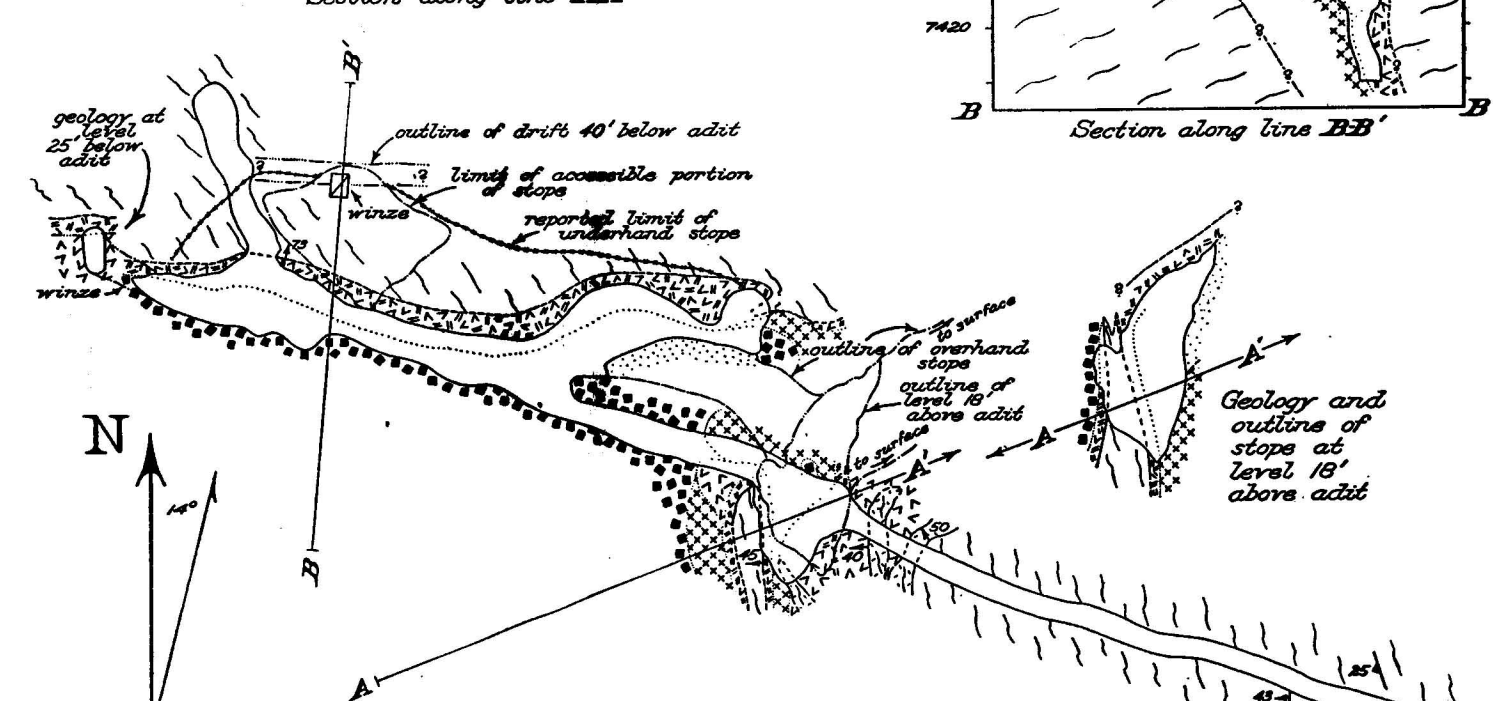
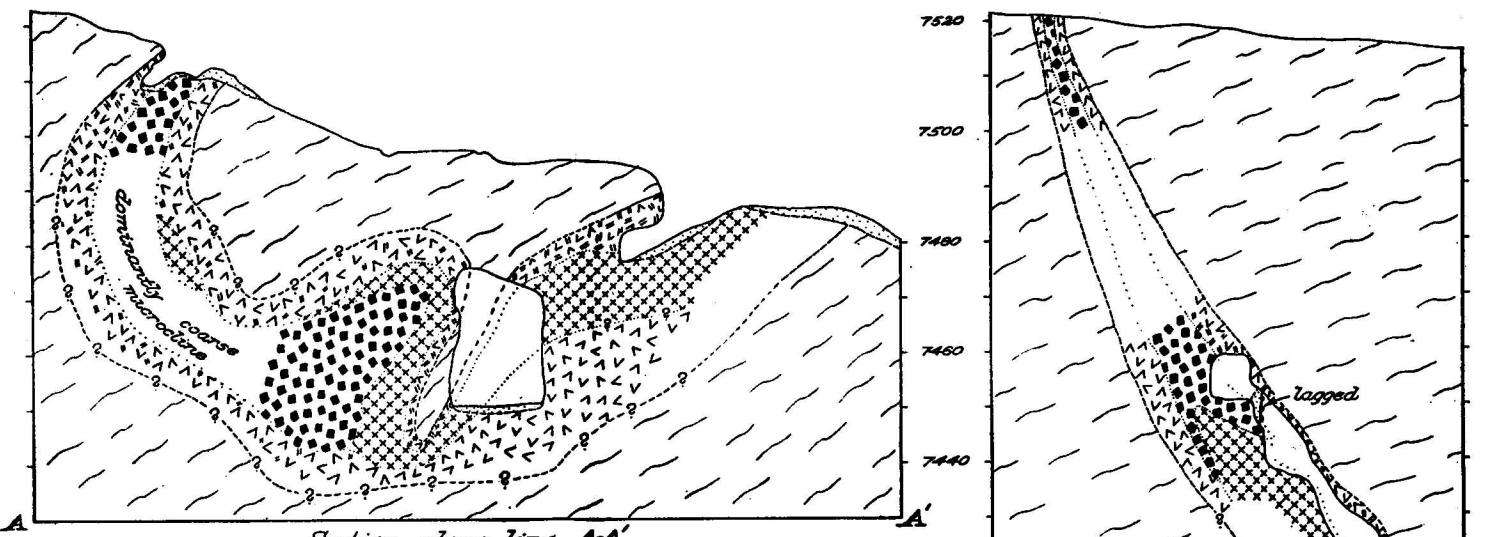
Edge of pit or cut

Outline of adit and workings at adit level (on geologic map)

0 10 20 30 40 50
Scale in feet

Topography by
W.P. Irwin
Geology by
E. Wm. Heinrich
9/43

Contour interval 10 feet
Datum is mean sea level.
Altitude of point P estimated
from U.S. Forest Service map



Geologic map, plans, and sections of the Coats deposit.