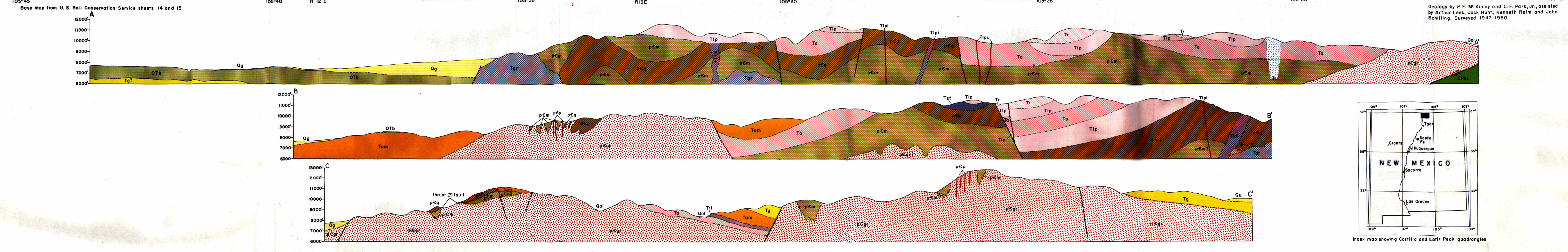


- EXPLANATION**
- Qal Valley alluvium
 - Qg Stream gravel, talus and glacial debris
 - Qc Coarse fan gravels
 - Qd Gravels and sands along the mountain front and 200 to 300 feet above the present stream channels
 - Qa Quaternary andesite
 - Qb Dikes of gray porphyritic andesite
 - Qs Quaternary basalt
 - Qd Gray to dark gray basalt flows
 - Qa Angular unconformity
 - Ts Tertiary gravels
 - Tc Semiconsolidated conglomerate and coarse sandstone
 - UNCONFORMITY
 - Ar Altered rock
 - Ar Areas of hydrothermal alteration where the rock units were undisturbed
 - Trp Mosaic porphyry
 - Dikes of gray to dark green monzonite porphyry
 - Tp Tertiary volcanic complex and associated rocks
 - Tr, rhyolite tuffs, welded tuff layers
 - Tr, rhyolite dikes and flows
 - Tp, olive basalt flows
 - Tp, cream to light pink porphyritic granite
 - Tp and Tpl, Latir Peak formation
 - Tp, light gray to reddish andesite and latite porphyry flows or sills
 - Tp, gray andesite and latite porphyry dikes
 - Tp, red, purple to green andesite flows, sills, breccia and tuffs
 - UNCONFORMITY
 - Te Early Tertiary(?) sediments
 - Te Gray to red sandstone, siltstone, conglomerate, and thin limestone
 - UNCONFORMITY
 - Sc Sangre de Cristo formation
 - Sc Red arkosic shale, sandstone, and conglomerate
 - UNCONFORMITY
 - pEb Metagabbro
 - pEb Altered gabbro and diabase dikes and stocks
 - pEg Pegmatites
 - pEg White to pink in color, usually composed of quartz, microcline, orthoclase, and some muscovite, with small amounts of garnet and magnetite
 - pGc Granite
 - pGc Pink to cream microcline-rich granite and granite gneiss, includes pegmatite material and some magnetite
 - pC Metamorphic rocks
 - pC, Cabresto(?) quartzite, gray to cream massive quartzite, pillow-layers of mica gneiss and graphitic mica gneiss
 - pCm, Undifferentiated amphibolite schist and gneiss, mica schist and gneiss, quartzite and migmatites
 - Contact
 - - - Concealed contact
 - Fault, showing dip
 - Dashed where approximately located
 - High angle fault
 - U, upthrown side, D, downthrown side
 - Thrust fault
 - T, upper plate
 - Strike and dip of beds
 - Strike and dip of overturned beds
 - Strike of vertical beds
 - Strike and dip of foliation
 - Strike of vertical foliation
 - Dry lake
 - Intermittent stream
 - Perennial stream
 - Canal
 - Road
 - Mines or prospects
 - Buildings



GEOLOGIC MAP AND SECTIONS OF COSTILLA AND LATIR PEAK QUADRANGLES, NEW MEXICO

