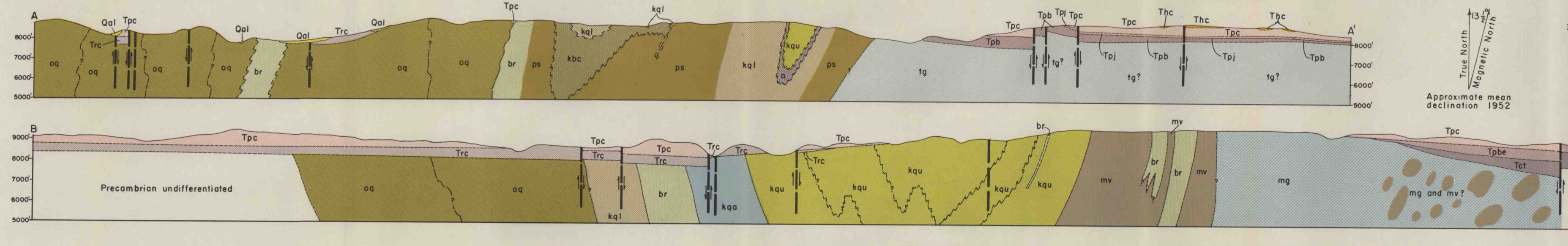
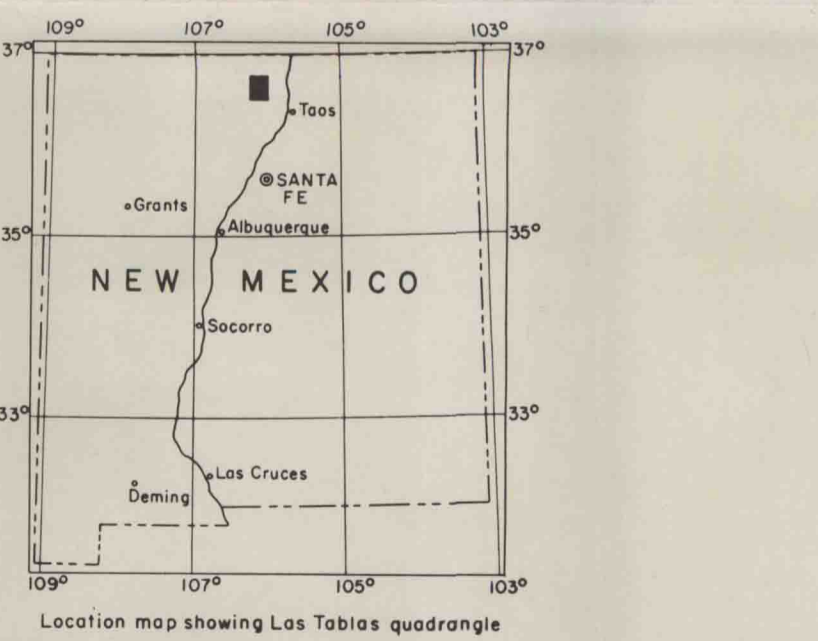
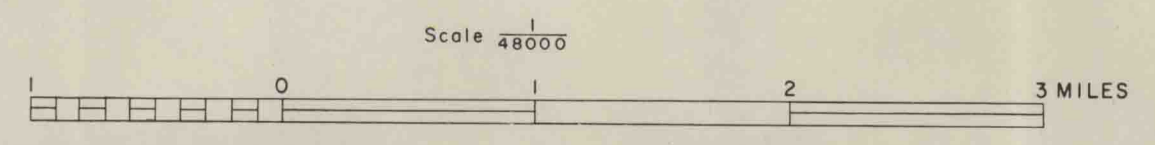


- EXPLANATION**
- Qal Alluvium
 - Stream and eolian deposits
 - Thd Dorado basalt
 - Flows of olivine basalt, basalt, and quartz basalt
 - Thc Cisneros basalt
 - Flows of olivine basalt
 - Cordito member
 - Tpc Rhyolitic conglomerate, tuff, and sandstone
 - Tpc-t Tuff
 - Tpj Jarito basalt member
 - Flows of olivine basalt
 - Tpb1 Biscaia intrusive andesite
 - Tpb2 Biscaia-Esquivel member
 - Conglomerate with fragments of andesite, latite, tuff, sandstone, and flow breccia
 - Tpb3 Biscaia member
 - Conglomerate with fragments of andesite, latite, tuff, and sandstone; andesite flow breccia
 - Tct Treasure Mountain and Conchos(?) formations
 - Tct- Conglomerates of Precambrian rock fragments; sandstone, tuff, and felsitic conglomerate
 - Ttr- Treasure Mountain rhyolitic welded tuff
 - Trc Ritito conglomerate
 - Conglomerate of Precambrian rock fragments
- NOTE: pc omitted from letter symbols for Precambrian units.
- Tg Tres Piedras granite
 - Flesh-colored foliated microcline granite
 - Mg Maquinita granodiorite
 - Gray lineated and foliated granodiorite
 - Br Burned Mountain metarhyolite
 - Reddish-orange flowbanded sills of metarhyolite
 - Kqu Upper quartzite member
 - Massive light-gray vitreous partly pebbly quartzite
 - Kjc Jawbone conglomerate member
 - Light-gray pebble conglomerate and pebbly quartzite
 - Kqa Amphibolite member
 - kqa Amphibolite and quartzite undifferentiated
 - a Amphibolite
 - Kql Lower quartzite member
 - Massive light-gray vitreous partly pebbly partly micaceous quartzite
 - Kbc Big Rock conglomerate member
 - Gray micaceous pebble and cobble conglomerate
 - Mv Mappin metavolcanic series
 - Greenschist, amphibolite, schist, conglomerate, and phyllite
 - Oq Ortega quartzite
 - Massive light-gray vitreous partly pebbly quartzite
 - Ps Pelaco schist
 - Muscovitized schistose quartzite and metarhyolite, equivalent to parts of the Ortega and Kiawa Mountain formations
- CONTACTS AND STRUCTURES**
- Contact
 - Dashed where approximately located; dotted where concealed
 - Fault
 - Dashed where approximately located; dotted where concealed
 - Doubtful or probable fault
 - Anticline
 - Showing trace of axial plane and bearing and plunge of axis; dotted where concealed
 - Overturned anticline
 - Showing trace of axial plane and bearing and plunge of axis; dotted where concealed
 - Syncline
 - Showing trace of axial plane and bearing and plunge of axis; dotted where concealed
 - Overturned syncline
 - Showing trace of axial plane and bearing and plunge of axis; dotted where concealed
- STRUCTURAL SYMBOLS**
- Strike and dip of beds
 - Strike and dip of overturned beds
 - Horizontal beds
 - Generalized strike and dip of crumpled, plicated, or crenulated beds
 - Strike and dip of foliation
 - Strike of vertical foliation
 - Bearing and plunge of lineation
 - Strike and dip of foliation and plunge of lineation
- Mines (mostly abandoned) and prospects



GEOLOGIC MAP AND SECTIONS OF LAS TABLAS QUADRANGLE, NEW MEXICO



QUATERNARY

Pliocene

Hinsdale series

Las Pinas formation

Conglomerate, tuff, sandstone, basalt, flow breccia, and intrusive andesite

TERTIARY

Miocene

Kisew Mountain formation

Massive light-gray pebbly quartzite, conglomerate, and amphibolite

PRECAMBRIAN