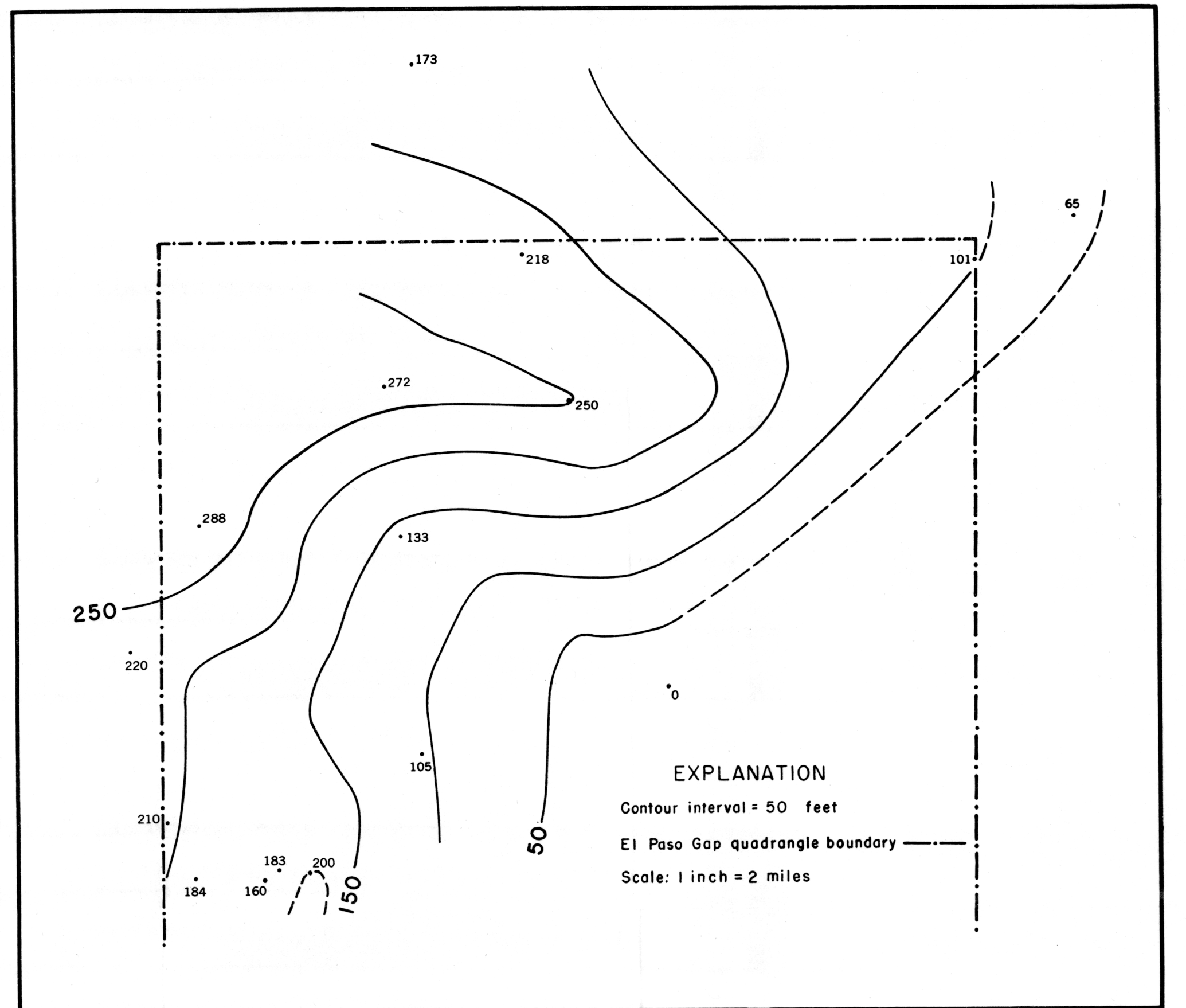
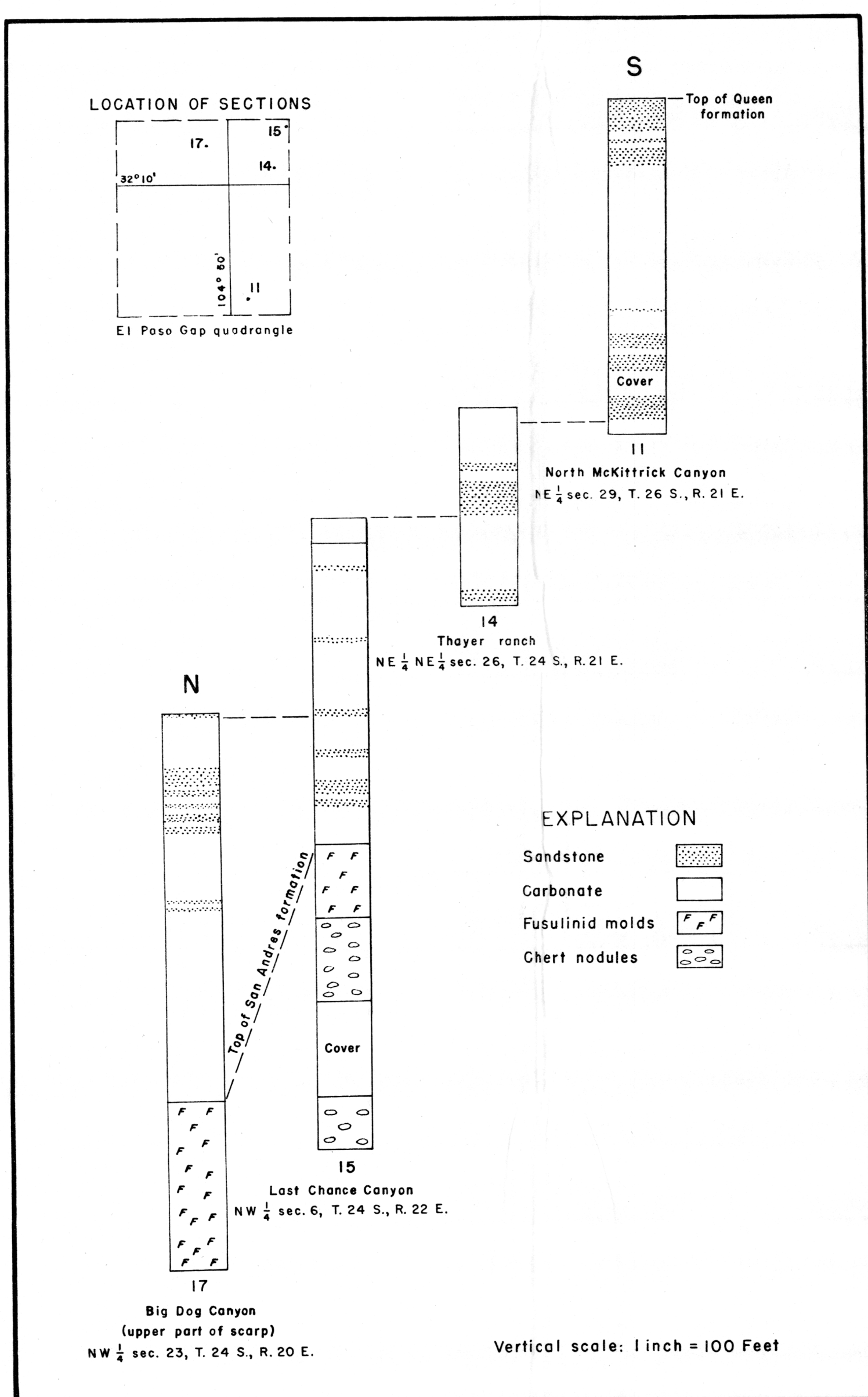


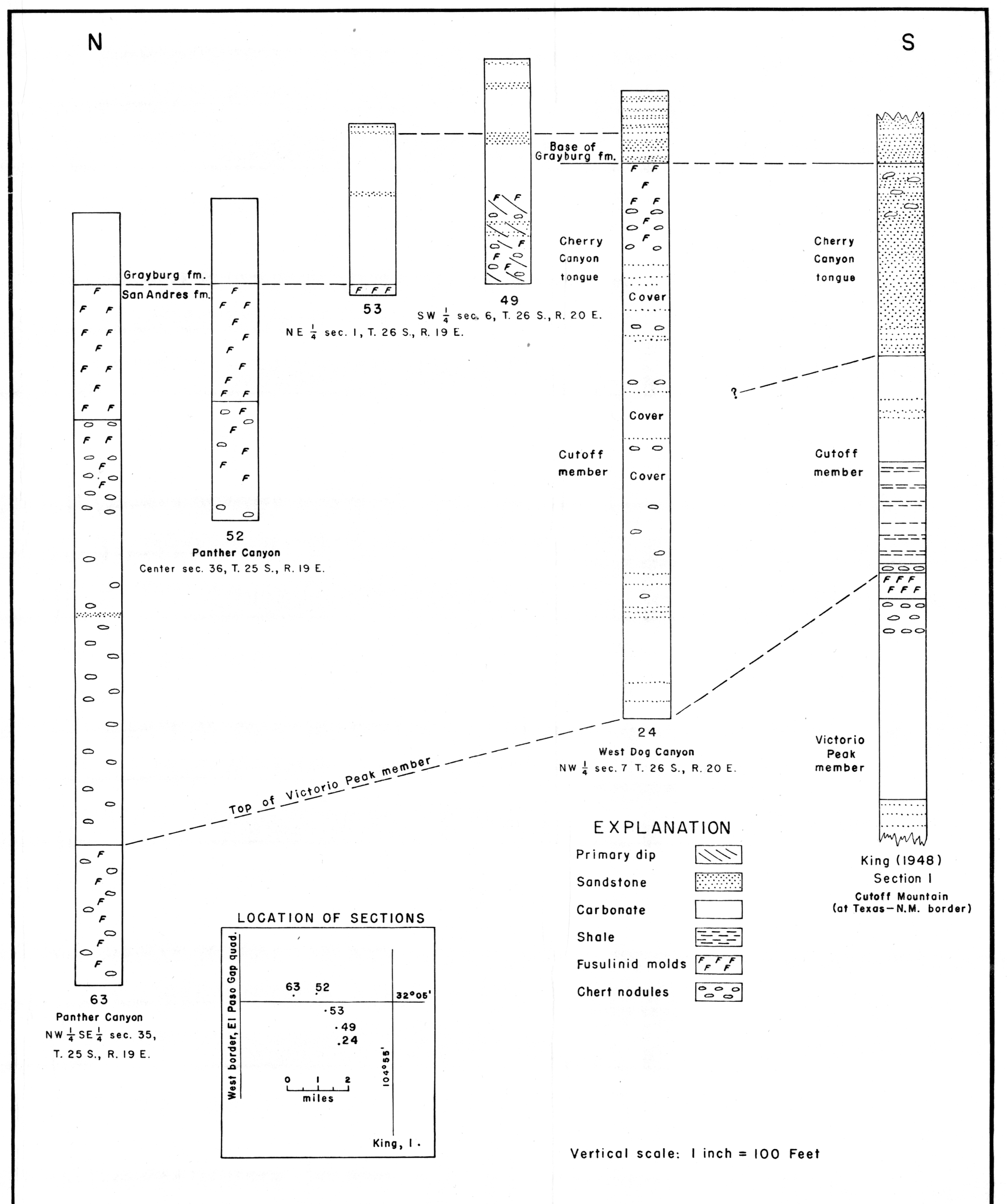
A. Sections along Big Ridge near the northern limit of the Cherry Canyon tongue



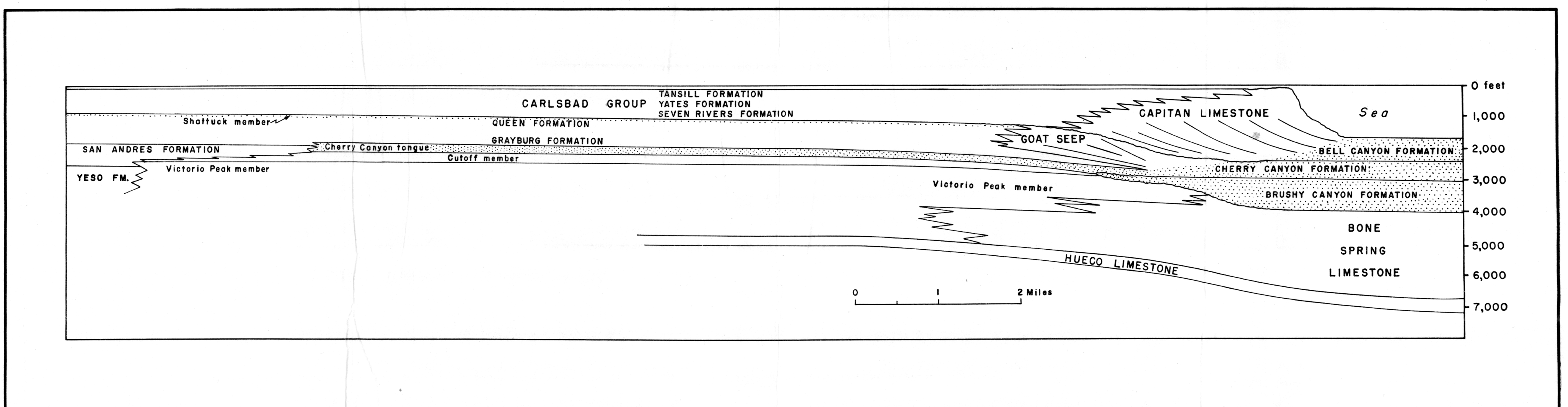
B. Isopach map of the upper member of the San Andres formation in the central Guadalupe Mountains



C. Composite Grayburg-Queen section



D. Correlation between north and south margins of the San Andres transition facies



E. Geologic section through the central and southern Guadalupe Mountains at the end of Guadalupian time

STRATIGRAPHY