

EXPLANATION

QUATERNARY

- Qal: Recent alluvium, older valley fill, and pediment gravels
- Qgl: Younger gravel deposits
- Qgh: Older gravel deposits
- Tm: Acidic intrusive, fine-grained

TERTIARY(?)

- Ap: Andesite porphyry
- Id: Intrusive dikes, undifferentiated

PERMIAN

- Yf: Yeso formation
- Ab: Abo formation
- Lc: Labarcita formation

PENNSYLVANIAN

- Hf: Holder formation
- Bf: Beeman formation
- Gf: Gobbler formation
- Pe: Pre-Virgilian Pennsylvanian

Contact

Dashed where approximately located, dotted where concealed

Fault

Dashed where approximately located, dotted where concealed

- D: downthrown side, U: upthrown side
- A: Anticline, showing plunge
- O: Overturned anticline
- Anticline, dashed where approximately located
- S: Syncline, dashed where approximately located

Folds

Location of important measured sections

Location of structure sections

Strike and dip of bedding

Location of structure sections

Marker beds, shown by green lines within the mapped rock units are distinctive beds in the Labarcita formation. Numbers indicate relative stratigraphic position and correspond to numbers on Plate 3. Marker beds are dotted where approximately located.

Limestone

Sandstone

Conglomerate

F-33
Collection number of fusulinid locality

M-33
Collection number of megafossil locality

U-18
Fusulinid collections from measured section 18

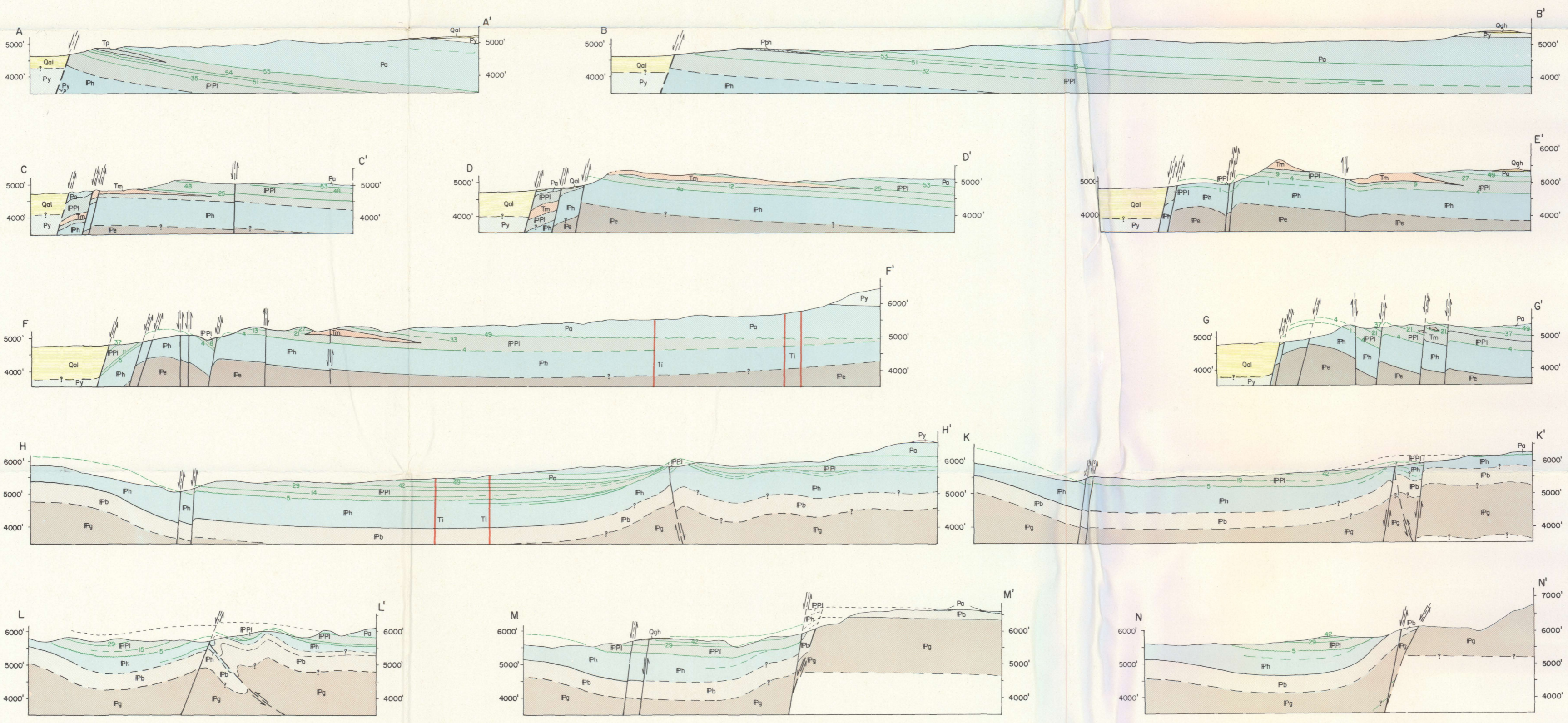
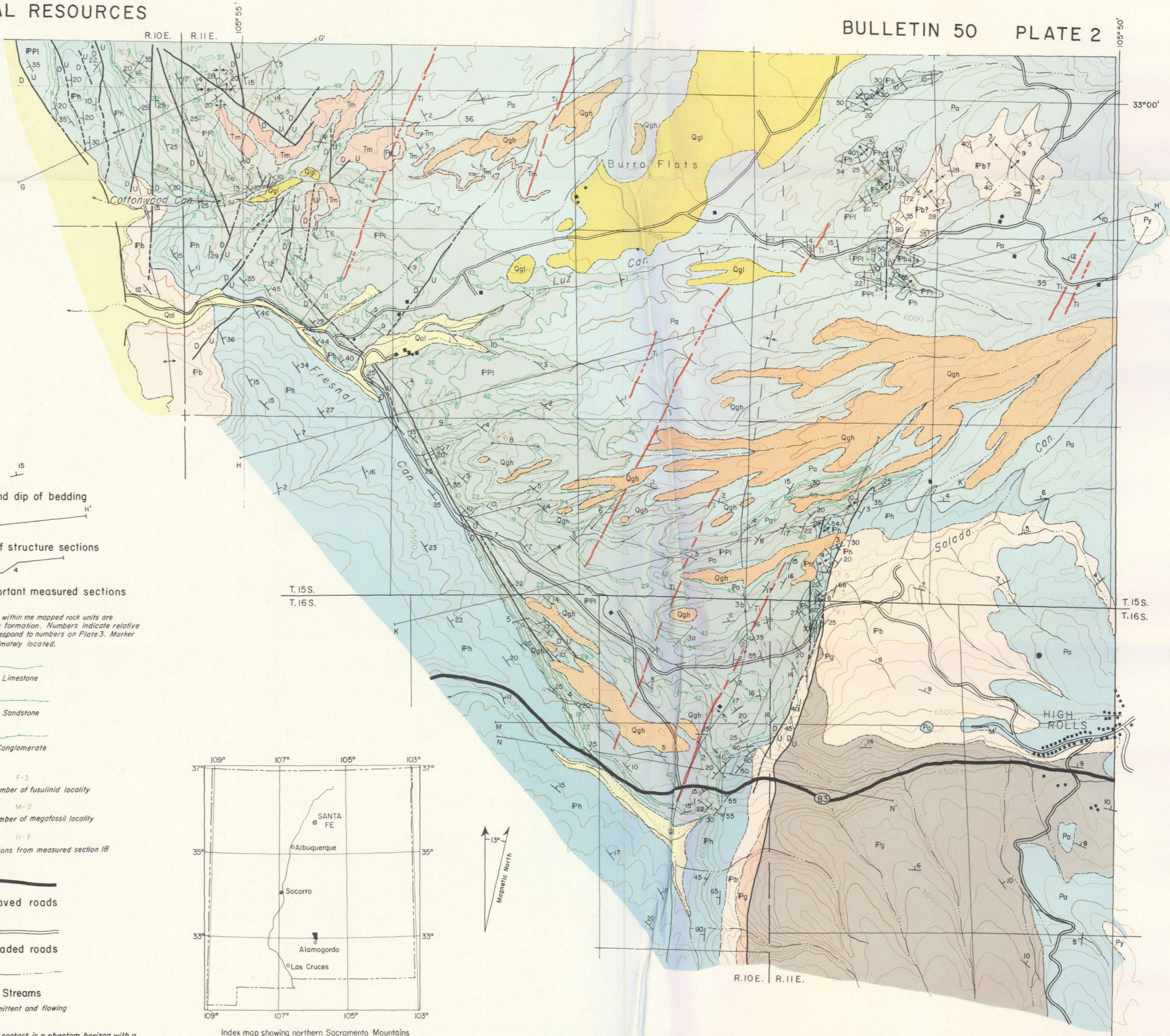
Paved roads

Graded roads

Streams
Intermittent and flowing

Index map showing northern Sacramento Mountains

The base of bed 5 is considered the basal contact of the Labarcita formation. North of Cottonwood Canyon the contact is a phantom horizon with a position stratigraphically equivalent to the base of bed 5. The base of bed 49 forms the lower contact of the Abo formation in this area.



Base map and topography compiled from U.S. Forest Service maps.

Geology by C. O. He, California Institute of Technology. Surveyed 1951-52 as part of the Field Assistance Fellowship Program. Cartography by A. W. Homblen.

GEOLOGY AND SECTIONS OF NORTHERN SACRAMENTO MOUNTAINS, NEW MEXICO

