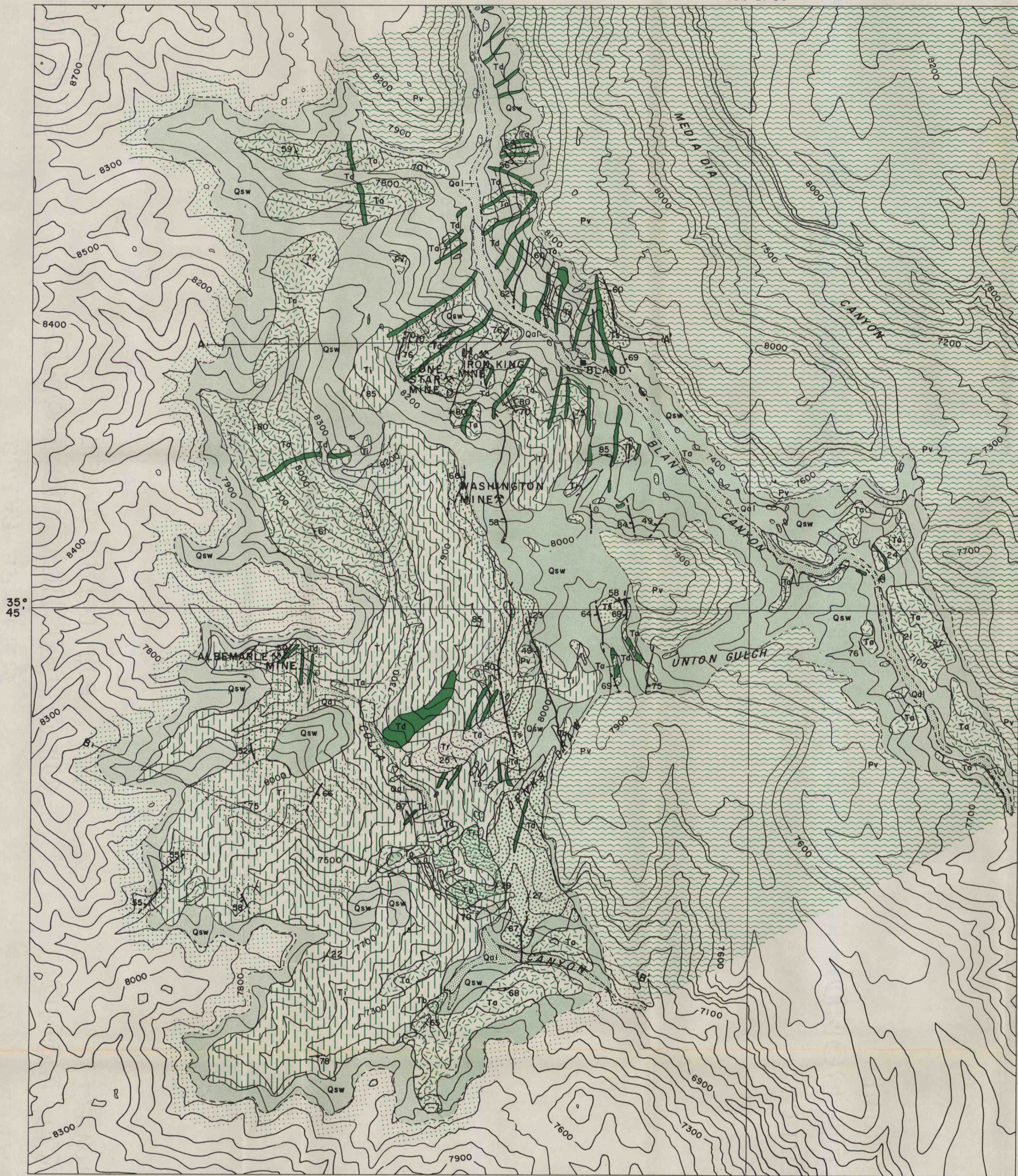


106°27'30"

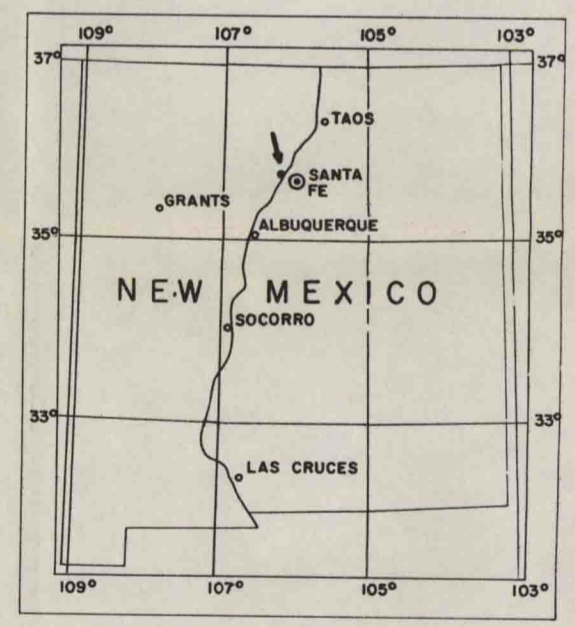


Base from U.S. Geological Survey topographic maps

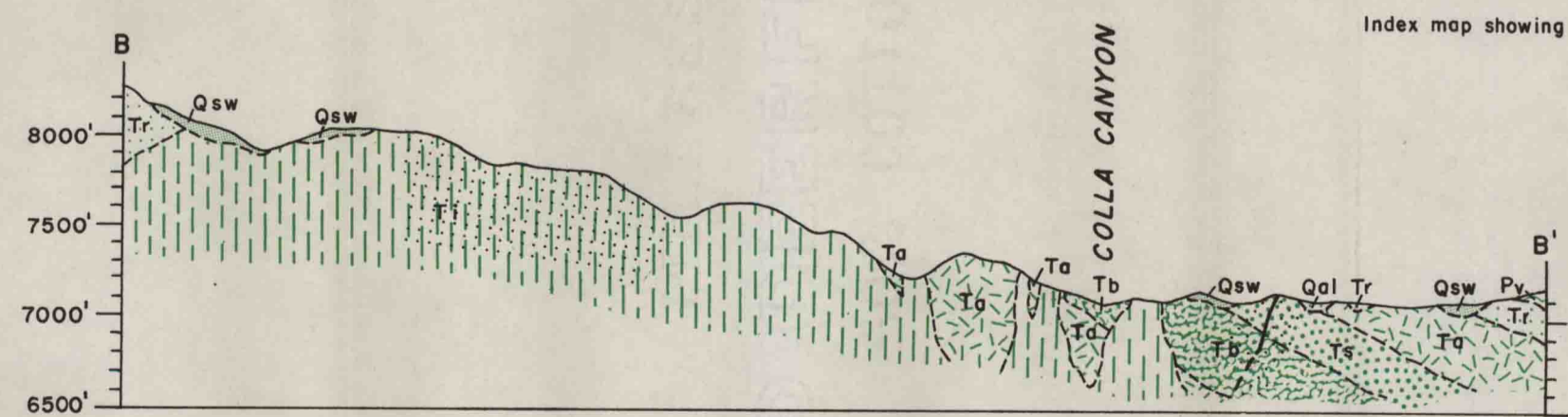
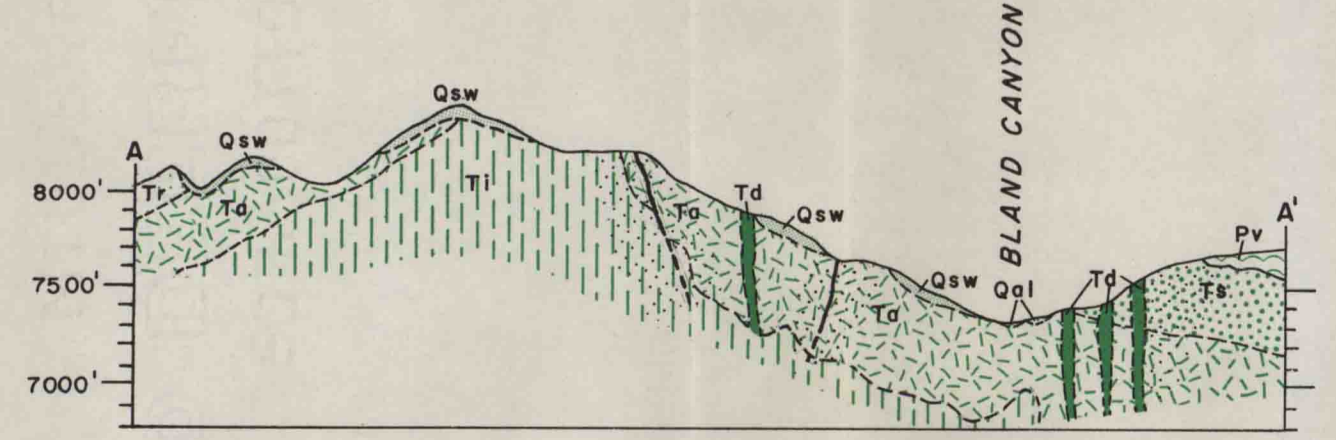
Geology by Wayne M. Bundy  
Surveyed in 1952

EXPLANATION

- Recent
    - Sedimentary Rocks
      - Qsw Slope wash
      - Qal Alluvium
      - Ta Feldspathic sandstone
  - Pleistocene
    - Igneous Rocks
      - Pv Rhyolite flows and tuffs
      - Tr Silicic and argillic alteration  
Quartz veins
      - Td Rhyolite sill and dikes
      - Ti Andesite dikes, pods, and sills
      - Tg Monzonite stock
      - Ta Andesite flows and interbedded volcanic breccias and tuffs
  - QUATERNARY TERTIARY QUATERNARY
    - TERTIARY
- 45  
Strike and dip of bedding
- Contact, dashed where approximately located
- 45  
Strike and dip of joints
- ↕  
Strike of vertical joints
- Mine pit
- ⊗  
Mine



Index map showing Cochiti mining district



True north  
Magnetic north  
Approximate mean declination 1952

GEOLOGIC MAP OF THE COCHITI MINING DISTRICT, NEW MEXICO

