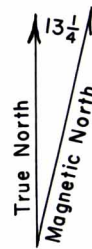
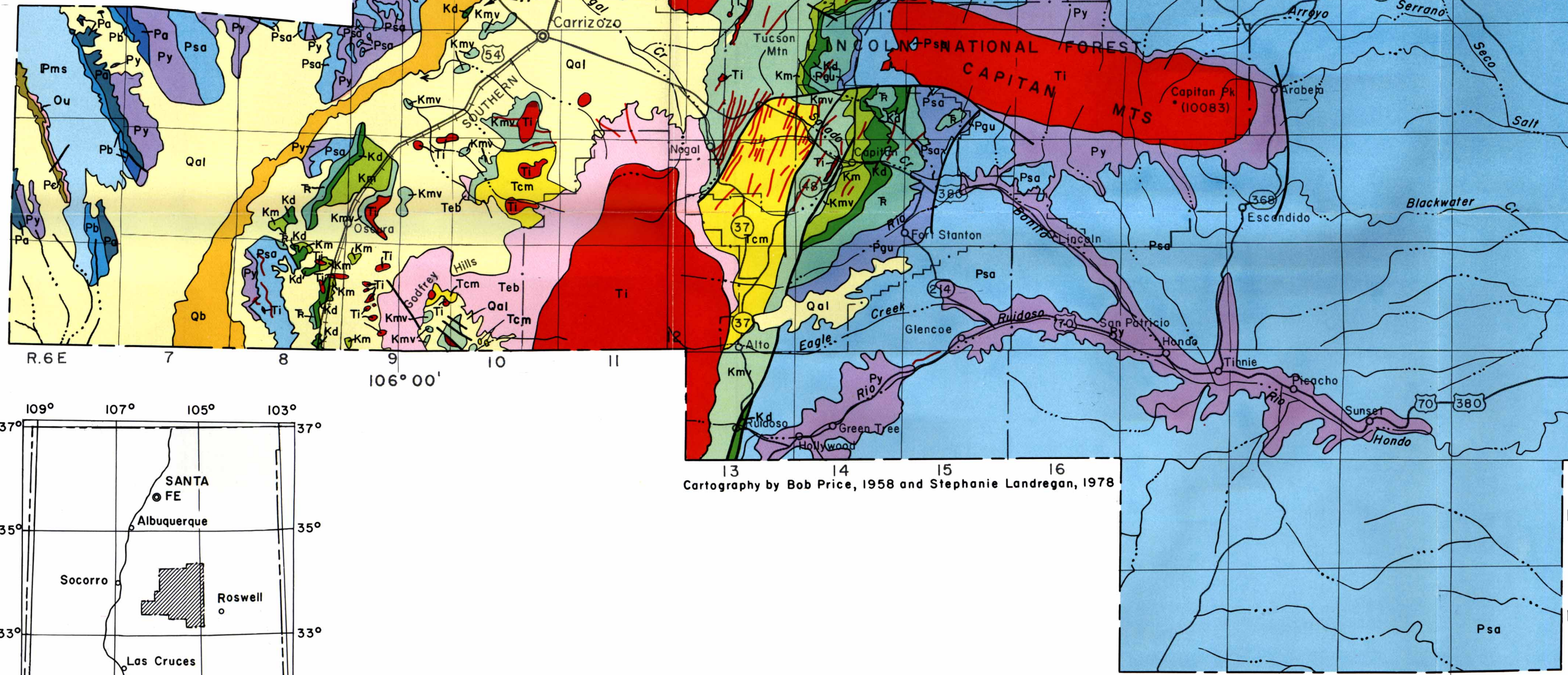


INDEX MAP OF LINCOLN COUNTY
Showing sources of geologic data

1. Darton, N. H., Geologic map of New Mexico, U. S. Geol. Survey, 1928.
2. Dane, C. H. and Bachman, G. O., Preliminary geologic map of the southwestern part of New Mexico, U. S. Geol. Survey, in preparation.
3. Dane, C. H. and Bachman, G. O., Preliminary geologic map of the southeastern part of New Mexico, Map I-226, U. S. Geol. Survey, 1958.



APPROXIMATE MEAN DECLINATION, 1952



Cartography by Bob Price, 1958 and Stephanie Landregan, 1978

Compiled by G. B. Griswold, 1958

EXPLANATION

Pliocene and Recent	Qal	Alluvium	QUATERNARY
	Qb	Basalt flows <i>Location of volcanic vent noted by *</i>	
Late Tertiary	Ti	Intrusive masses and dikes of various compositions <i>Includes some volcanic rocks in the Sierra Blanca igneous complex</i>	TERTIARY
	Teb	Basalt, andesite, and latite flows	
Eocene	Tcm	Cub Mountain formation	CRETACEOUS
Upper Cretaceous	Kmv	Mesaverde group	
	Km	Mancos shale	
Lower Cretaceous	Kd	Dakota (?) sandstone	TRIASSIC
Upper Triassic	R	Triassic rocks, undifferentiated	
Guadalupe	Pu	Permian rocks, undifferentiated	PERMIAN
	Pgu	Chalk Bluff formation	
Leonard	Psa	San Andres formation	
	Pg	Glorieta sandstone	
	Py	Yeso formation	
Wolfcamp	Pa	Abo formation	PENNSYLVANIAN
	Pb	Bursum formation	
Pms	Pms	Magdalena group	ORDOVICIAN
	Ou	Ordovician rocks, undifferentiated	
Pe	Pe	Precambrian rocks	PRECAMBRIAN

GEOLOGIC MAP OF LINCOLN COUNTY

