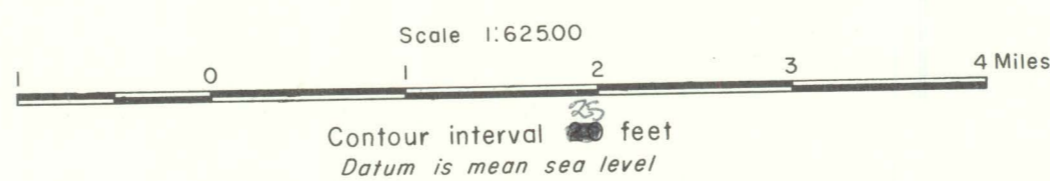


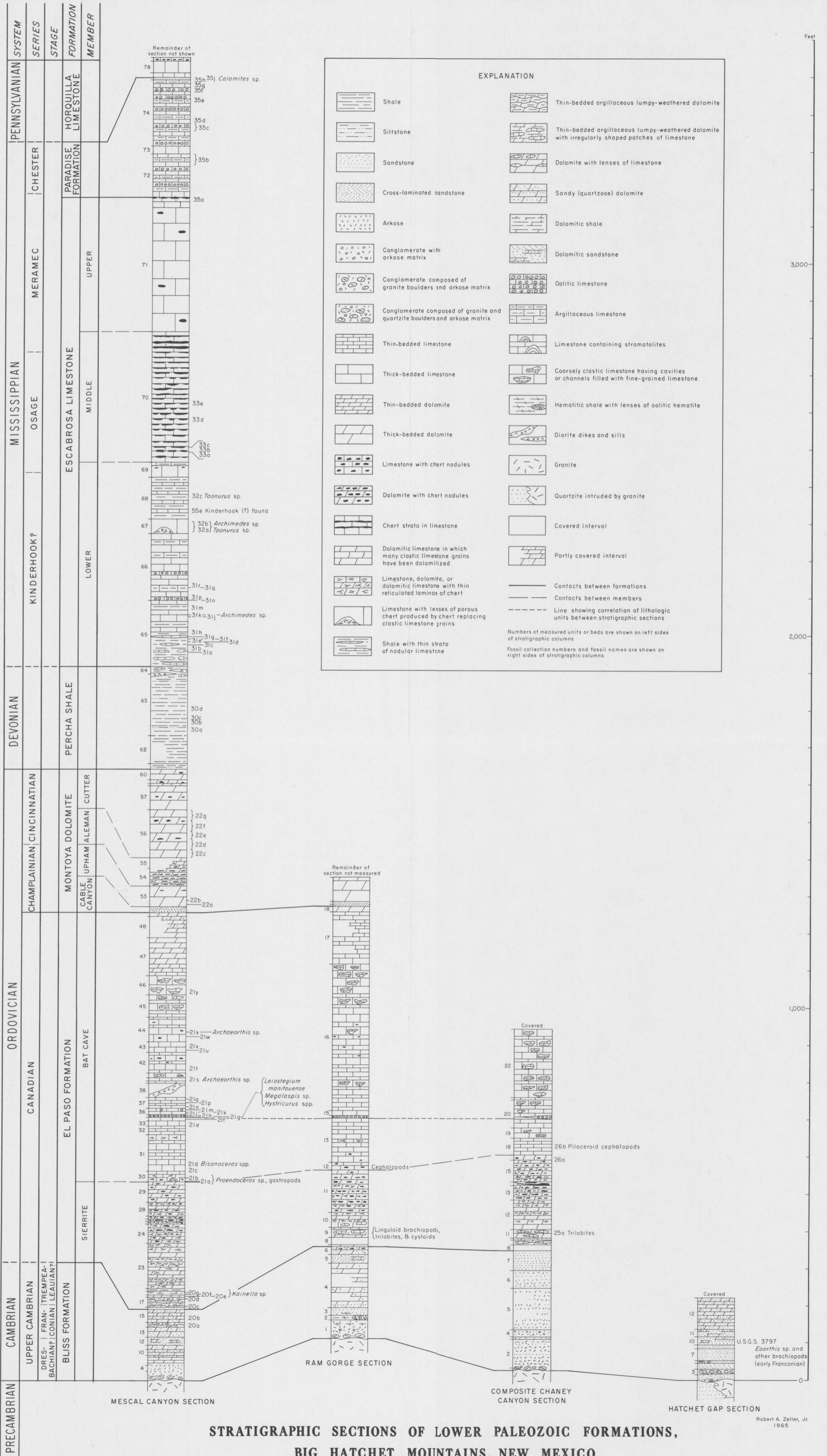
Base from Big Hatchet Peak and Dog Mountains
Quadrangles, surveyed by the U.S. Geological Survey in
cooperation with the War Department in 1917-1918.
Culture revised by R.A. Zeller, Jr., in 1960.



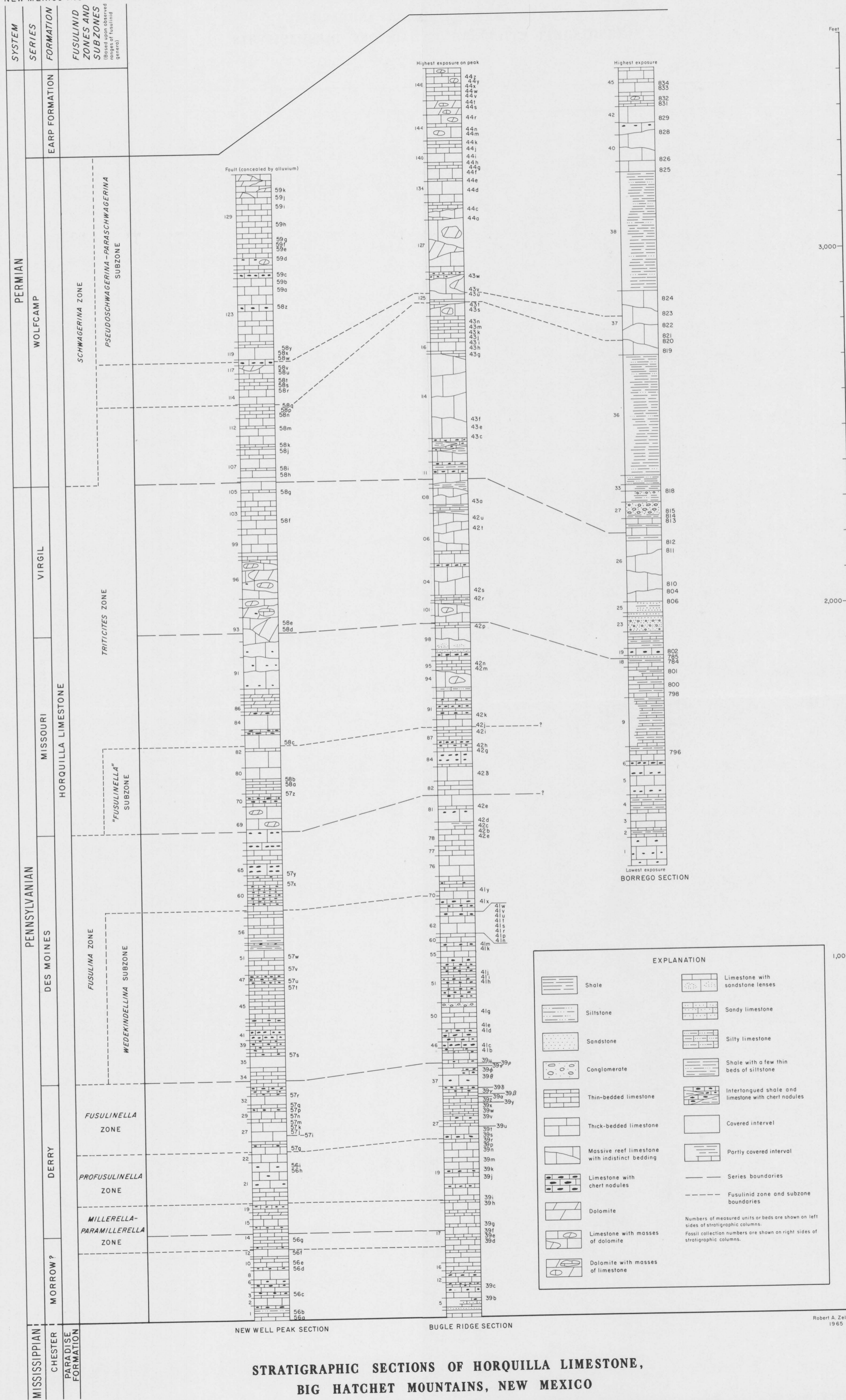
EXPLANATION
 Locations of measured sections
 Arrow indicates direction of younger beds

 Offsets of measured section

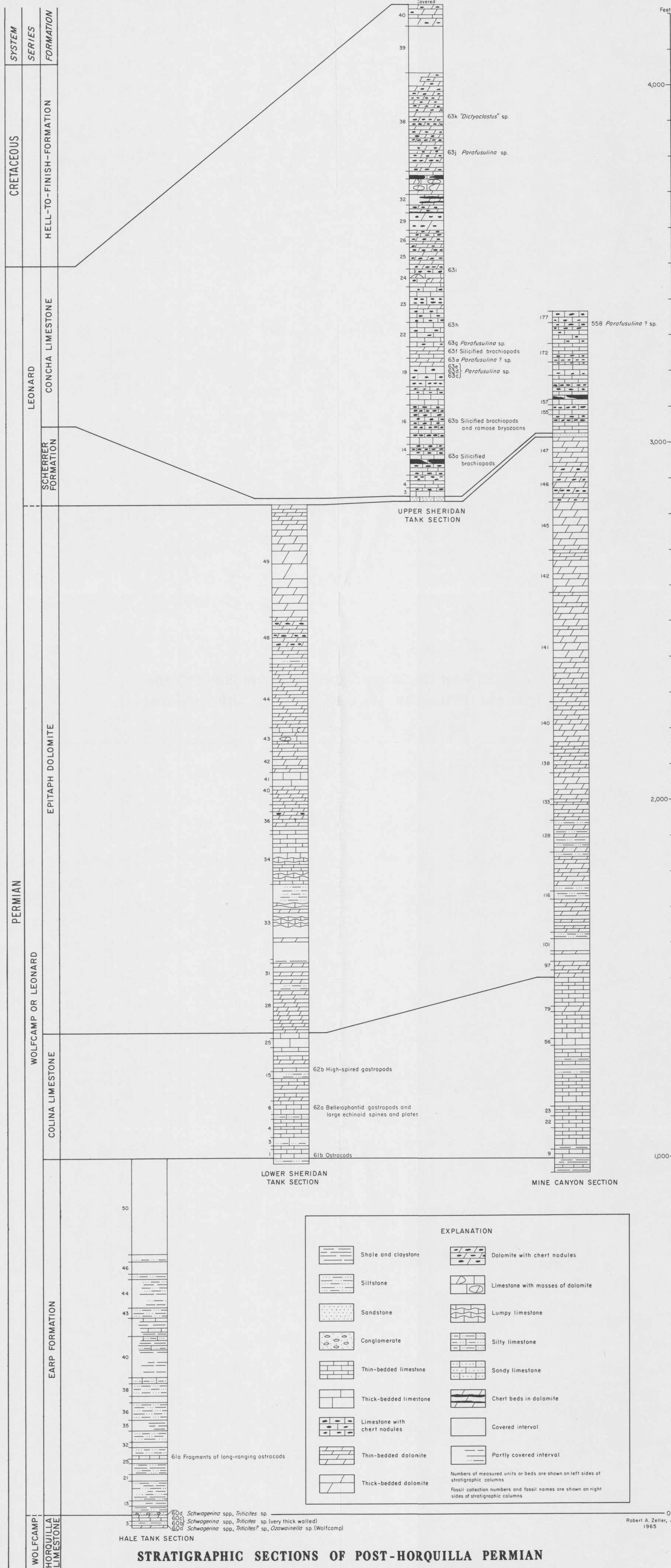
MAP OF BIG HATCHET MOUNTAINS AREA AND LOCATIONS OF MEASURED SECTIONS



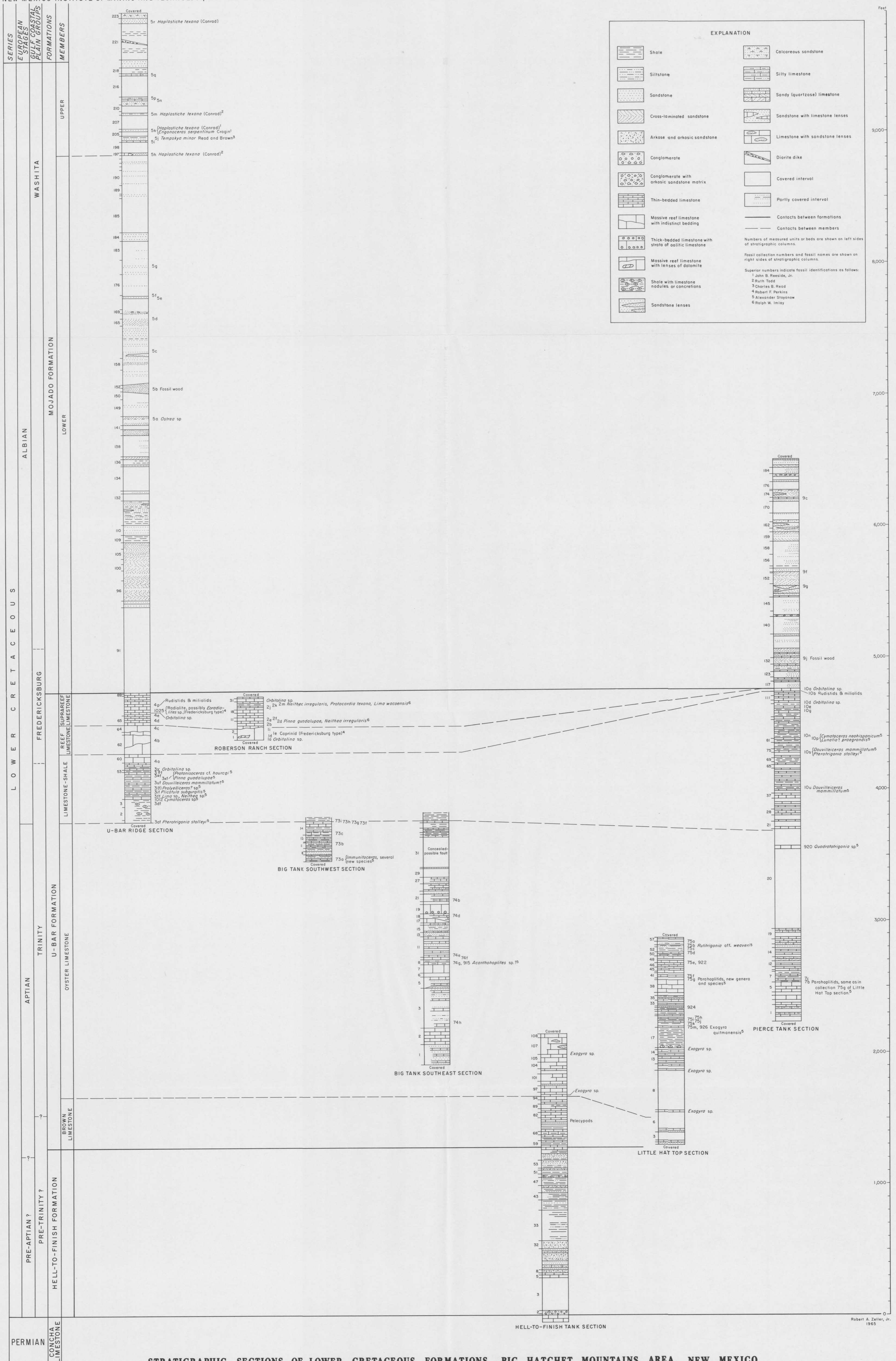
STRATIGRAPHIC SECTIONS OF LOWER PALEOZOIC FORMATIONS, BIG HATCHET MOUNTAINS, NEW MEXICO



STRATIGRAPHIC SECTIONS OF HORQUILLA LIMESTONE,
BIG HATCHET MOUNTAINS, NEW MEXICO



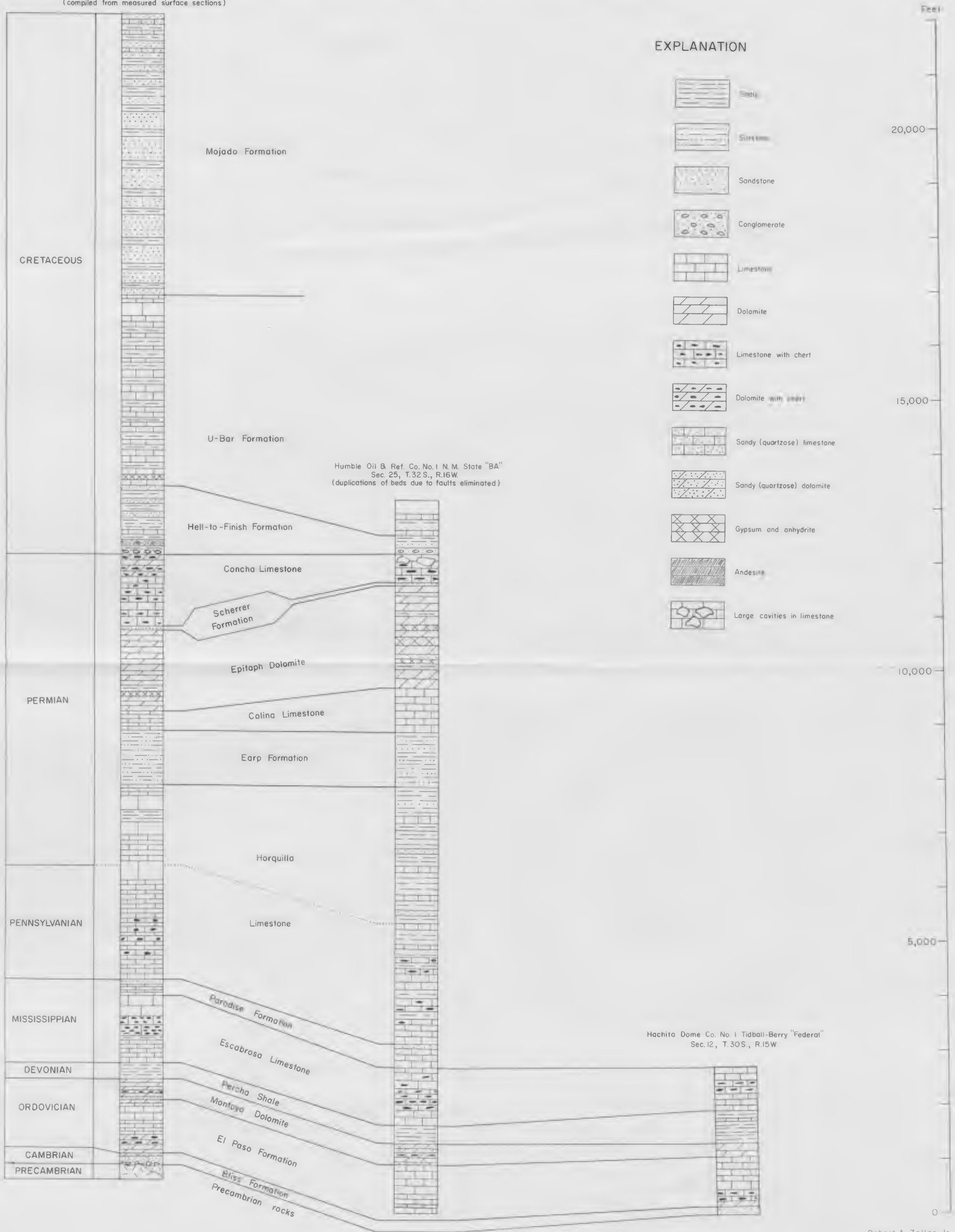
STRATIGRAPHIC SECTIONS OF POST-HORQUILLA PERMIAN FORMATIONS, BIG HATCHET MOUNTAINS, NEW MEXICO



STRATIGRAPHIC SECTIONS OF LOWER CRETACEOUS FORMATIONS, BIG HATCHET MOUNTAINS AREA, NEW MEXICO

Robert A. Zeller, Jr. 1965

Composite Stratigraphic Column
(compiled from measured surface sections)



Robert A. Zeller, Jr.
1965

**COMPOSITE SURFACE STRATIGRAPHIC COLUMN AND SUBSURFACE SECTIONS
FROM TWO DEEP WELLS, BIG HATCHET MOUNTAINS AREA, NEW MEXICO**