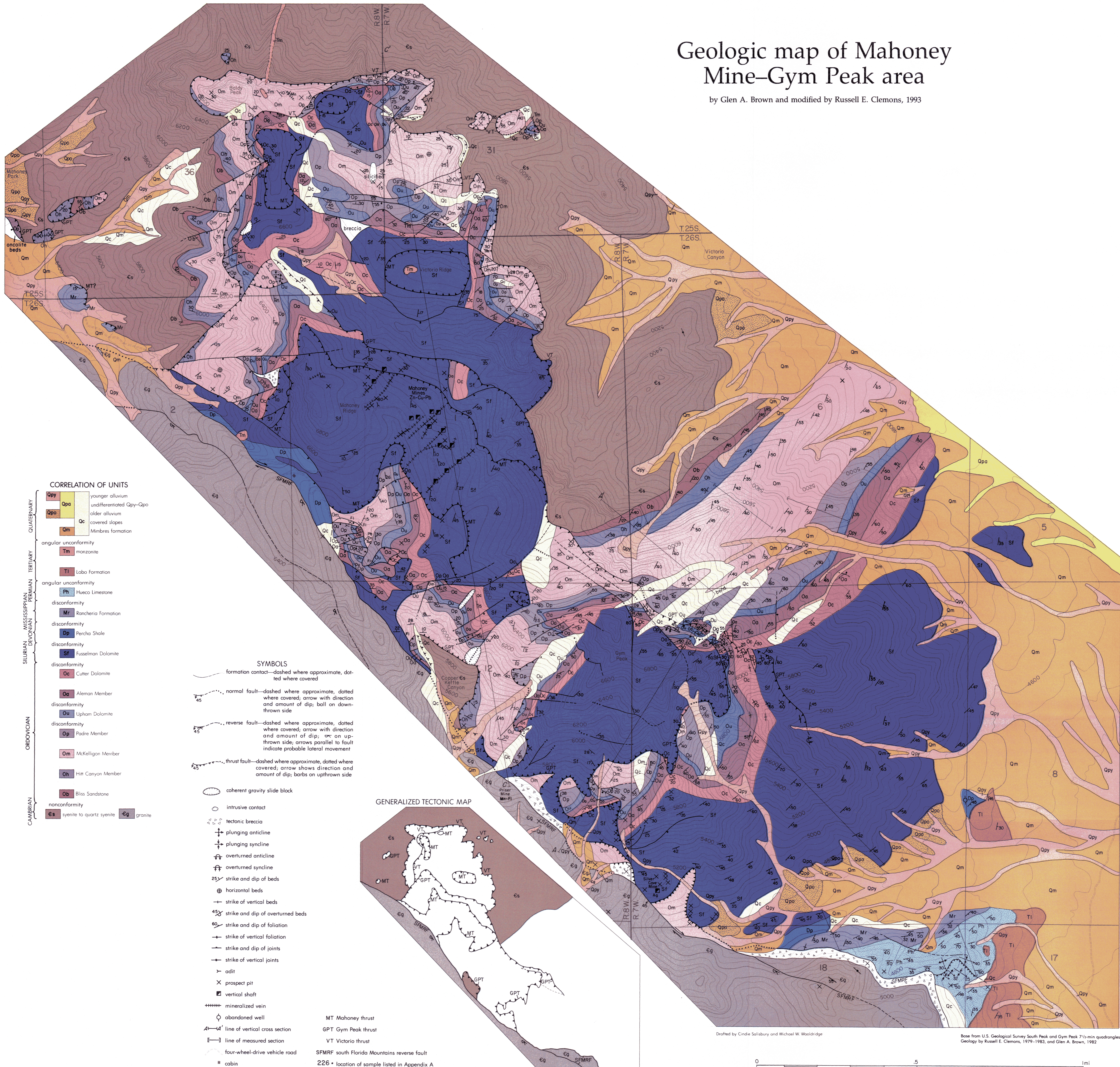


# Geologic map of Mahoney Mine–Gym Peak area

by Glen A. Brown and modified by Russell E. Clemons, 1993



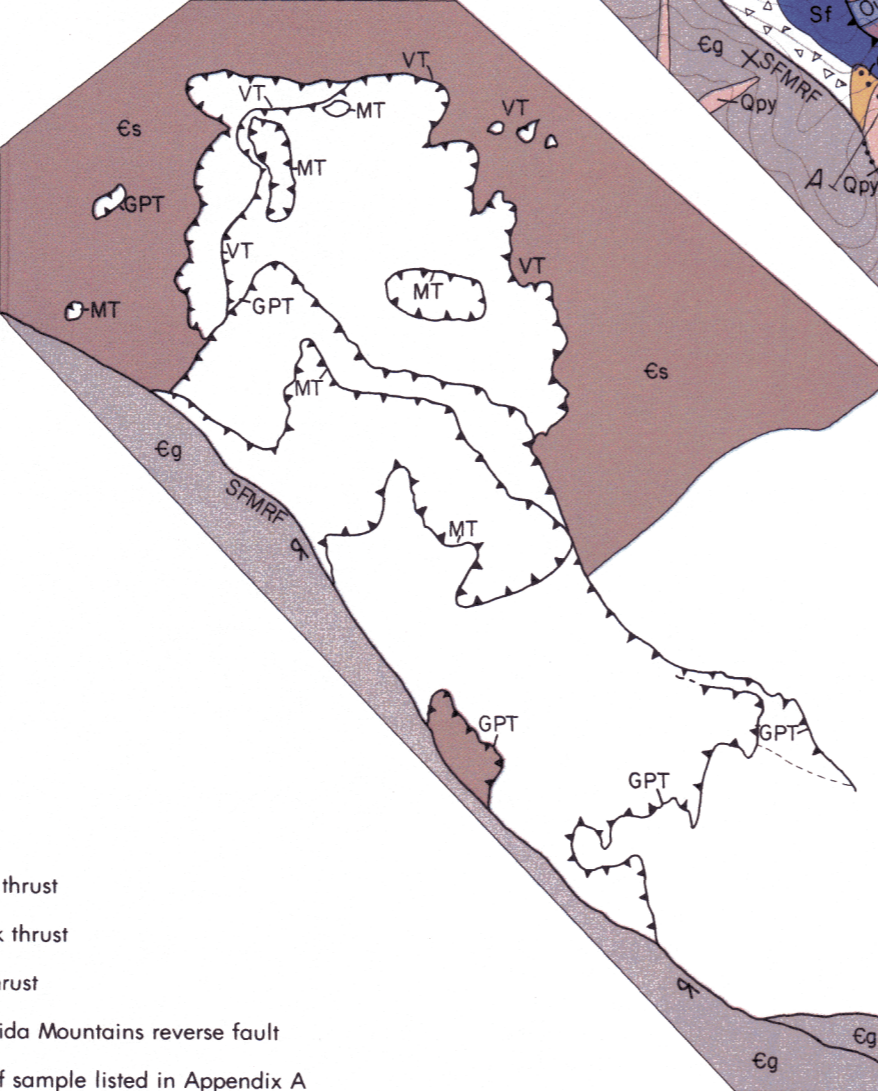
### CORRELATION OF UNITS

QUATERNARY	Qpy	younger alluvium
	Qpa	undifferentiated alluvium
	Qpo	older alluvium
	Qc	covered slopes
	Qm	Mimbres formation
TERTIARY	Tm	monzonite
PERMIAN	Ph	Hueco Limestone
MISSISSIPPIAN	Mr	Rancheria Formation
DEVONIAN	Dp	Percha Shale
SILURIAN	Sf	Fusselman Dolomite
	Oc	Cutter Dolomite
ORDOVICIAN	Oa	Aleman Member
	Ou	Upham Dolomite
	Op	Padre Member
	Om	McKelligan Member
	Oh	Hitt Canyon Member
	Ob	Bliss Sandstone
CAMBRIAN	Es	syenite to quartz syenite
	Eg	granite

### SYMBOLS

- formation contact—dashed where approximate, dotted where covered
- normal fault—dashed where approximate, dotted where covered; arrow with direction and amount of dip; ball on downthrown side
- reverse fault—dashed where approximate, dotted where covered; arrow with direction and amount of dip;  $\infty$  on upthrown side; arrows parallel to fault indicate probable lateral movement
- thrust fault—dashed where approximate, dotted where covered; arrow shows direction and amount of dip; barbs on upthrown side
- coherent gravity slide block
- intrusive contact
- tectonic breccia
- plunging anticline
- plunging syncline
- overturned anticline
- overturned syncline
- strike and dip of beds
- horizontal beds
- strike of vertical beds
- strike and dip of overturned beds
- strike and dip of foliation
- strike of vertical foliation
- strike and dip of joints
- strike of vertical joints
- adit
- prospect pit
- vertical shaft
- mineralized vein
- abandoned well
- line of vertical cross section
- line of measured section
- four-wheel-drive vehicle road
- cabin

### GENERALIZED TECTONIC MAP



Drafted by Cindie Salisbury and Michael W. Wooldridge

Base from U.S. Geological Survey South Peak and Gym Peak 7 1/2-min quadrangles. Geology by Russell E. Clemons, 1979–1983, and Glen A. Brown, 1982.

