

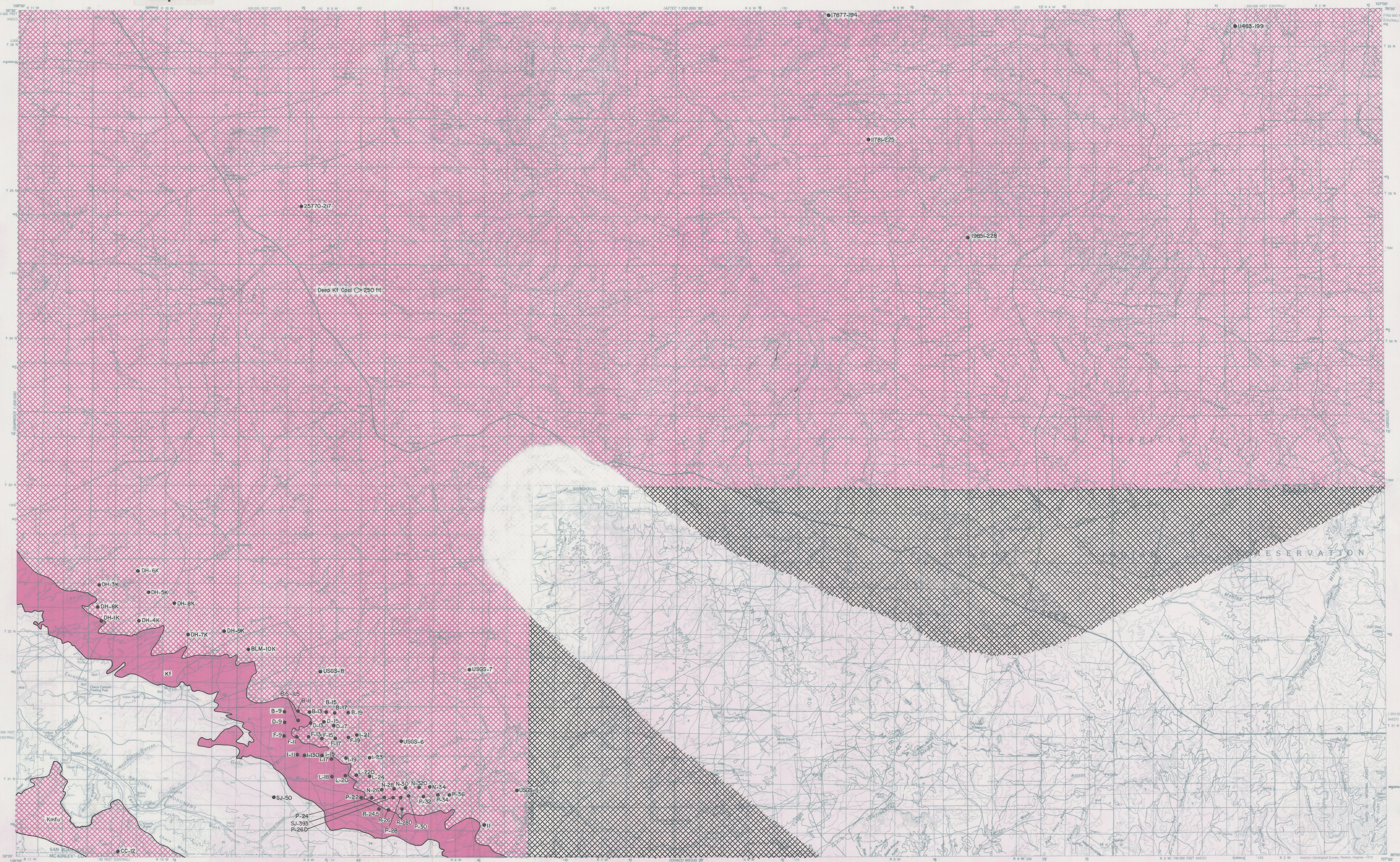
Deep Kf coals (> 250 ft)

SCALE 1:100 000
 1 CENTIMETER ON THE MAP REPRESENTS 1 KILOMETER ON THE GROUND
 CONTOUR INTERVAL 50 METERS

Moderate
 Very low
 Kf - Fruitland Formation
 ●20677 Drill hole & drill hole number

NAVAJO RESERVOIR, NEW MEXICO
 N3630-W10700/30x60
 1980

MAP 75 Coal occurrences, prospects, mines, and resource potential for Navajo Reservoir 30- by 60-minute topographic quadrangle, San Juan and Rio Arriba Counties, New Mexico.

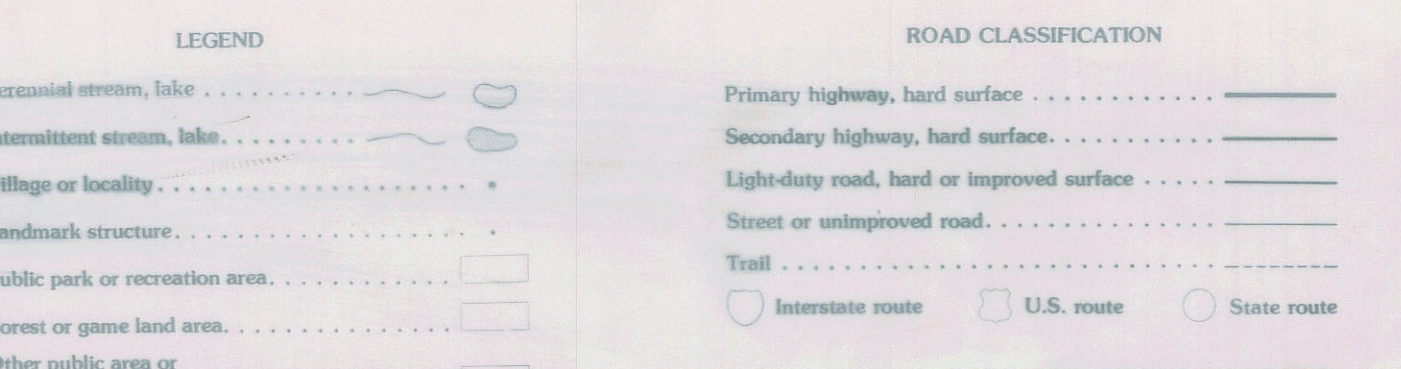
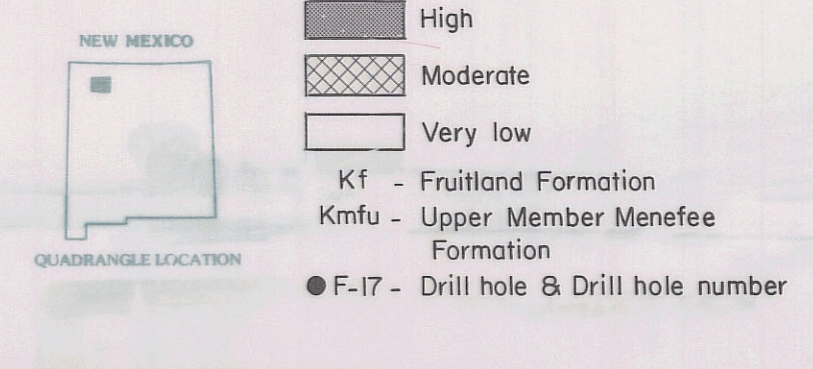
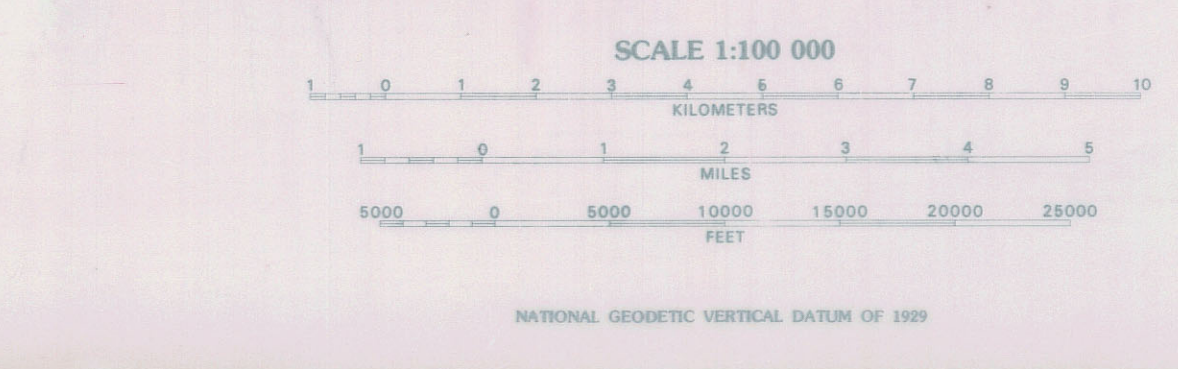
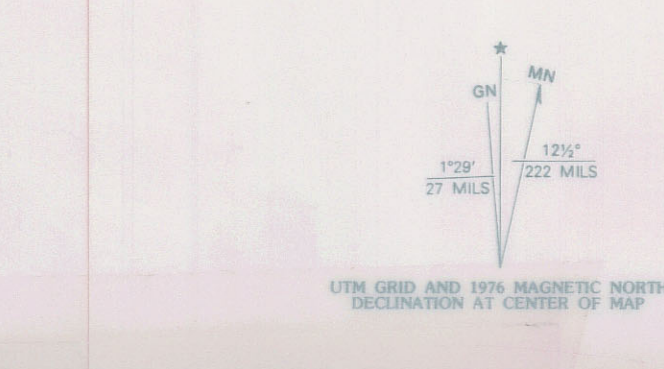


Mapped, edited, and published by the Geological Survey
Compiled in 1976 from USGS 1:24 000 and 1:62 500-scale topographic maps dated 1959-1967. See index for dates of individual maps
Partially revised from aerial photographs taken 1973-1976 and from other official sources. Revised information not field checked
Projection and 10 000-meter grid, zone 13: Universal Transverse Mercator
50 000-foot grid ticks based on New Mexico coordinate system, central and west zones, 1927 North American datum
Areas covered by dashed light-blue pattern are subject to controlled inundation

INDEX TO 1:24 000 AND 1:62 500-SCALE MAPS

1	2	3	4	5	6	7
8	9	10	11	12	13	
14	15	16	17	18	19	20
21	22	23	24	25	26	27
28	29					

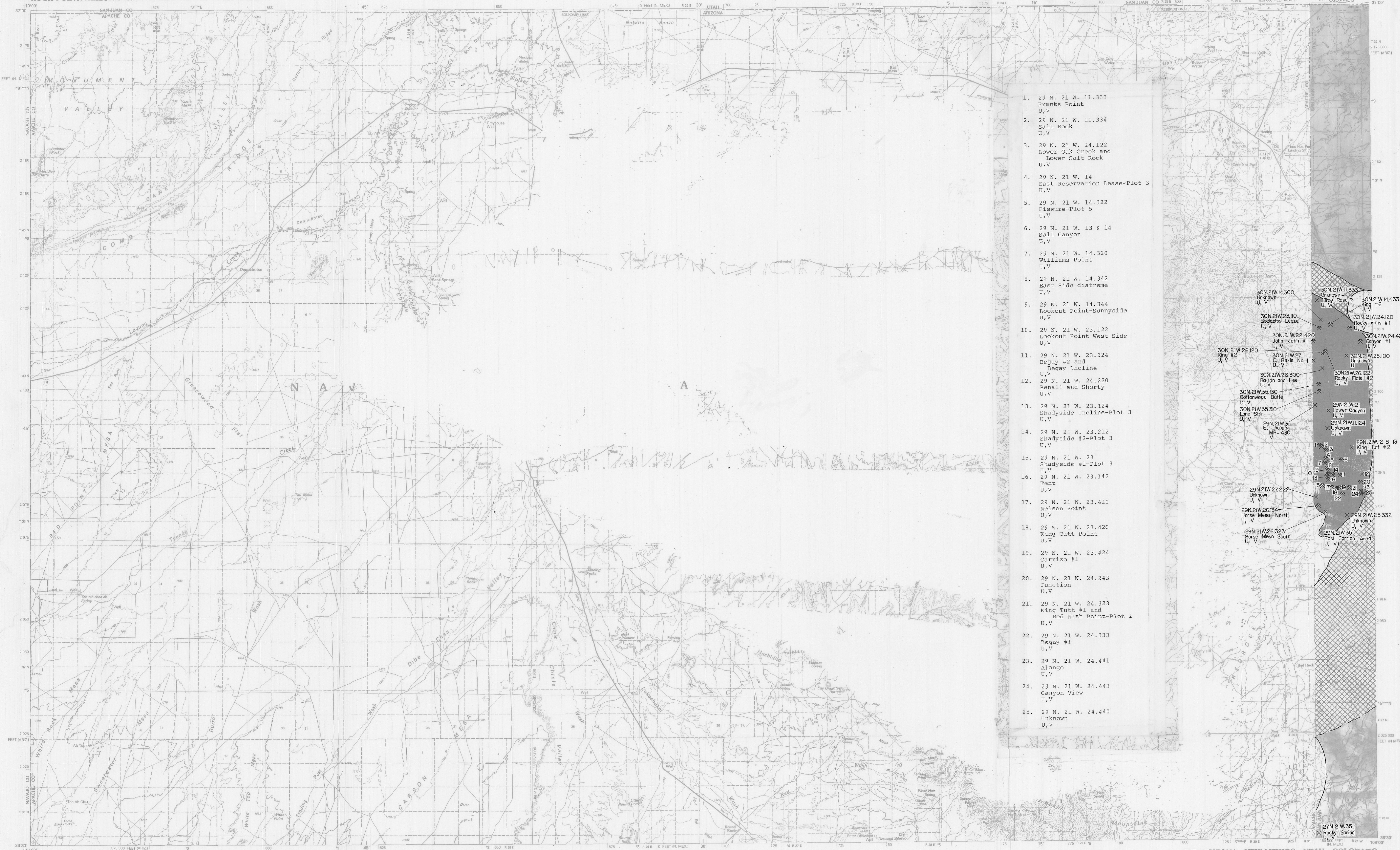
1:24 000 Scale Maps
1:62 500 Scale Maps



MAP 76 Coal occurrences, prospects, mines, and resource potential for Chaco Canyon 30- by 60-minute topographic quadrangle, San Juan and Rio Arriba Counties, New Mexico.

**OF-232
Map 77.**

ROCK POINT, ARIZONA—NEW MEXICO—UTAH—COLORADO



1. 29 N. 21 W. 11.333
Franks Point
U,V
2. 29 N. 21 W. 11.334
Salt Rock
U,V
3. 29 N. 21 W. 14.122
Lower Oak Creek and
Lower Salt Rock
U,V
4. 29 N. 21 W. 14
East Reservation Lease-Plot 3
U,V
5. 29 N. 21 W. 14.322
Fissure-Plot 5
U,V
6. 29 N. 21 W. 13 & 14
Salt Canyon
U,V
7. 29 N. 21 W. 14.320
Williams Point
U,V
8. 29 N. 21 W. 14.342
East Side diatreme
U,V
9. 29 N. 21 W. 14.344
Lookout Point-Sunnyside
U,V
10. 29 N. 21 W. 23.122
Lookout Point West Side
U,V
11. 29 N. 21 W. 23.224
Begay #2 and
Begay Incline
U,V
12. 29 N. 21 W. 24.220
Benall and Shorty
U,V
13. 29 N. 21 W. 23.124
Shadyside Incline-Plot 3
U,V
14. 29 N. 21 W. 23.212
Shadyside #2-Plot 3
U,V
15. 29 N. 21 W. 23
Shadyside #1-Plot 3
U,V
16. 29 N. 21 W. 23.142
Trent
U,V
17. 29 N. 21 W. 23.410
Nelson Point
U,V
18. 29 N. 21 W. 23.420
King Tutt Point
U,V
19. 29 N. 21 W. 23.424
Carrizo #1
U,V
20. 29 N. 21 W. 24.243
Junction
U,V
21. 29 N. 21 W. 24.323
King Tutt #1 and
Red Wash Point-Plot 1
U,V
22. 29 N. 21 W. 24.333
Begay #1
U,V
23. 29 N. 21 W. 24.441
Alongo
U,V
24. 29 N. 21 W. 24.443
Canyon View
U,V
25. 29 N. 21 W. 24.440
Unknown
U,V

SCALE 1:100 000
1 CENTIMETER ON THE MAP REPRESENTS 1 KILOMETER ON THE GROUND
CONTOUR INTERVAL 50 METERS

UT, ARIZONA—NEW MEXICO—UTAH—COLORADO
N3630—W10900/30X60
1983

High
 Moderate
 Low
 Very low for Morrison, Todilco, and Dakota Formations, Low for other rocks to 5000 ft

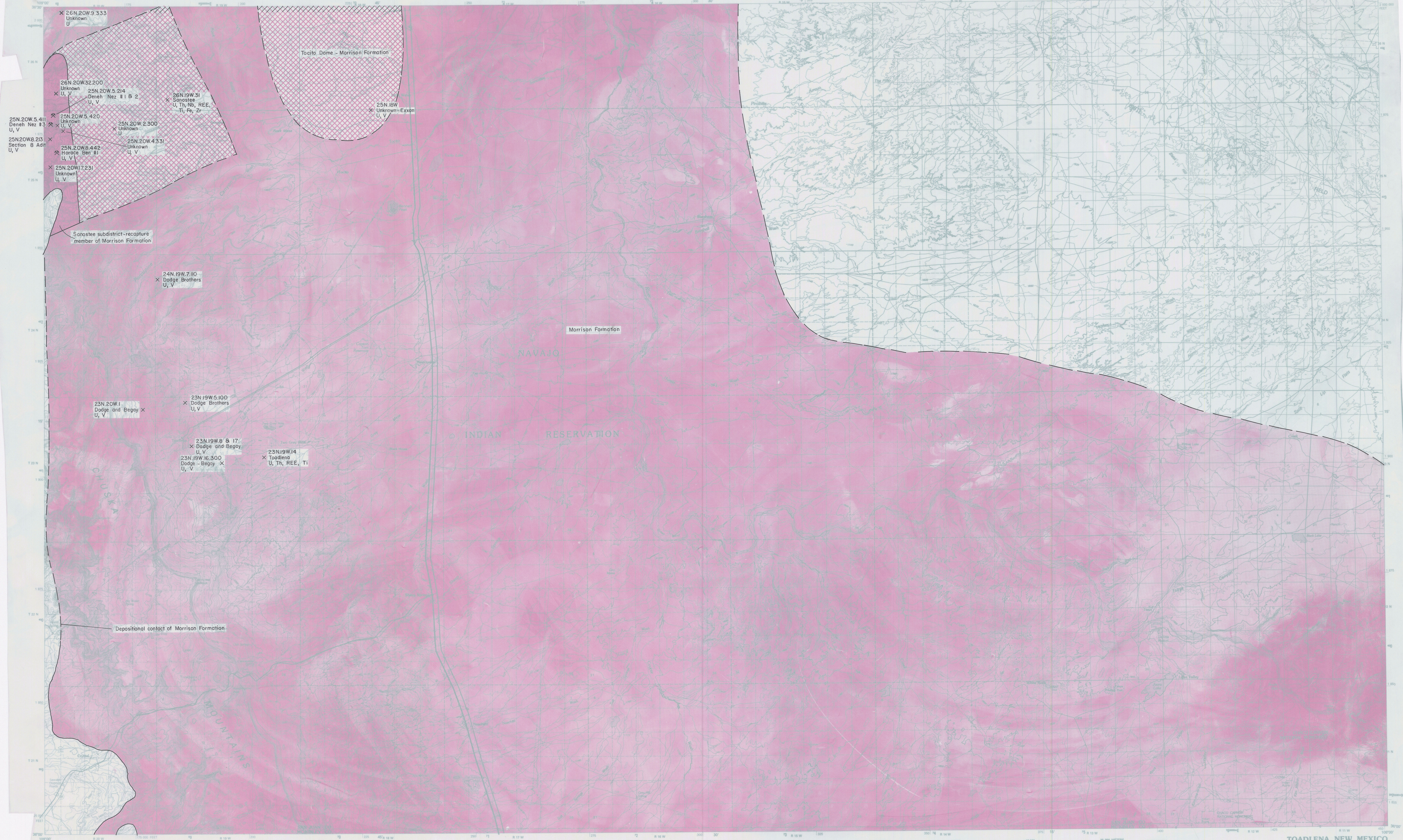
MAP 77 Mineral occurrences, prospects, mines, and resource potential for Rock Point 30- by 60-minute topographic quadrangle, San Juan County, New Mexico.



SCALE 1:100 000
CENTIMETER ON THE MAP REPRESENTS 1 KILOMETER ON THE GROUND
CONTOUR INTERVAL 50 METERS

MAP 78

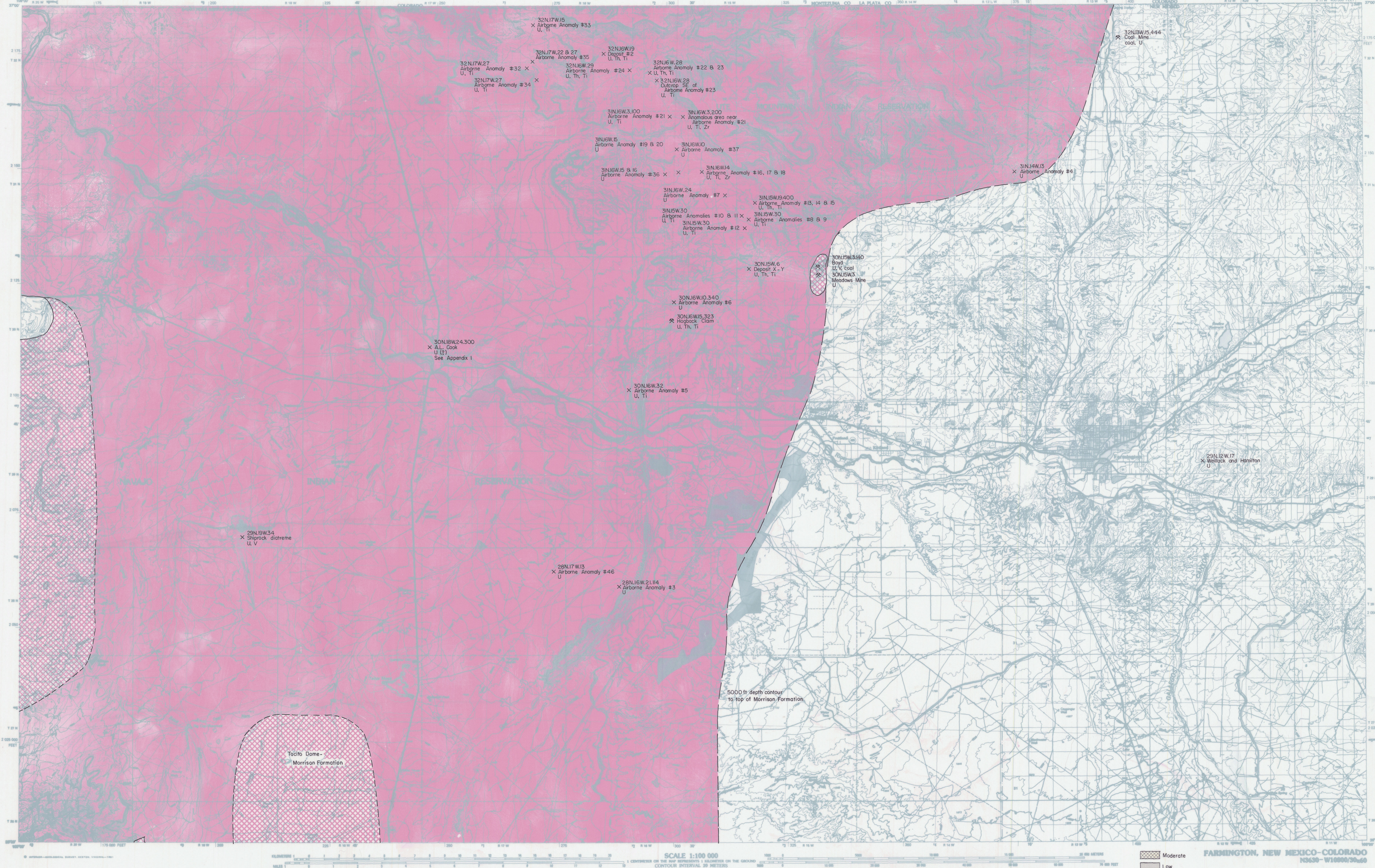
Mineral occurrences, prospects, mines, and resource potential for Canyon de Chelly 30- by 60-minute topographic quadrangle, San Juan County, New Mexico.



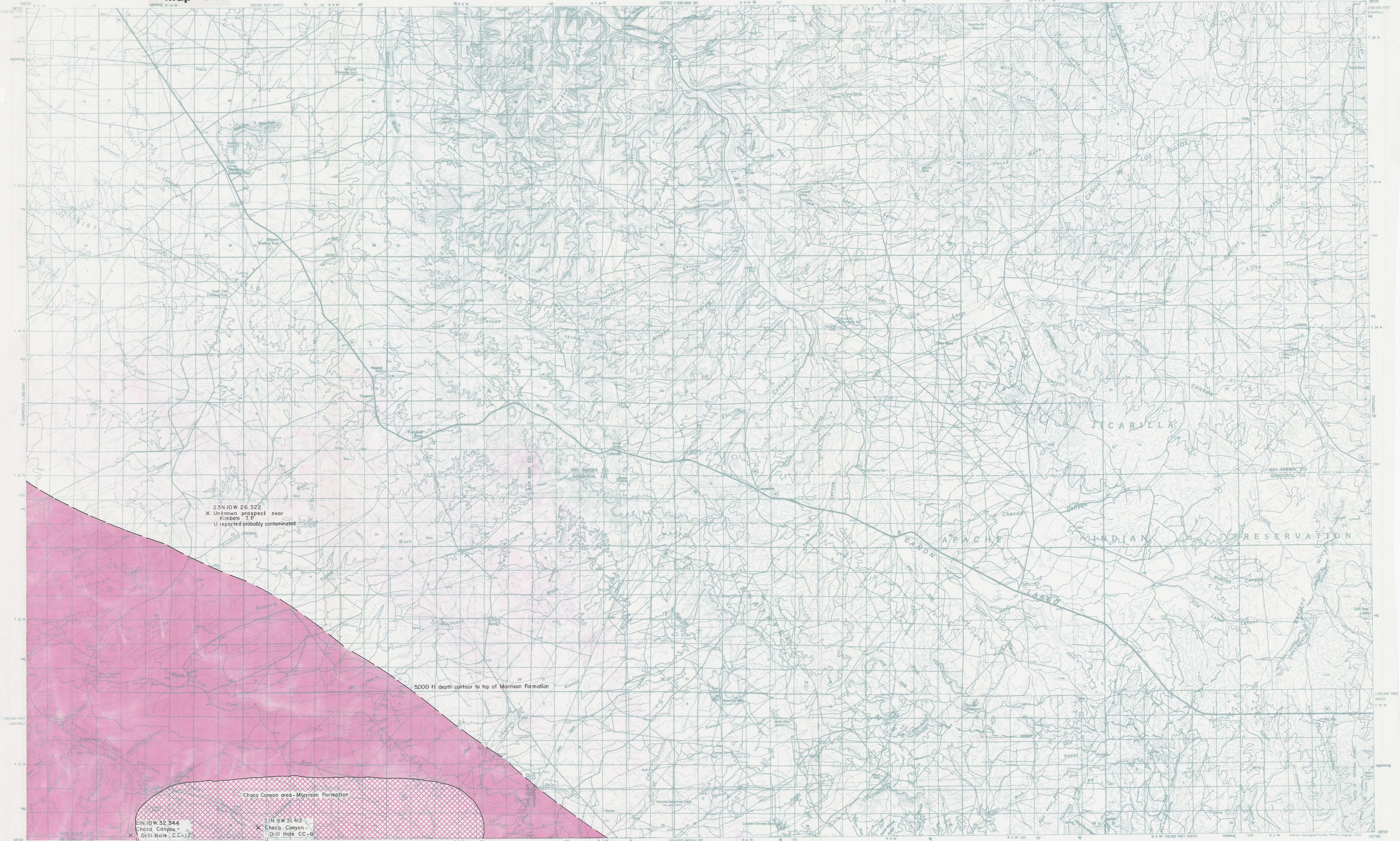
MAP 79 Mineral occurrences, prospects, mines, and resource potential for Toadlena 30- by 60-minute topographic quadrangle, San Juan County, New Mexico.

TOADLENA, NEW MEXICO
N3600-W10800/30 X 60
1980

High
Moderate
Low
Very low for Morrison, Todillo, and Dakota Formations, Low for other rocks to 5,000 ft



MAP 80 Mineral occurrences, prospects, mines, and resource potential for Farmington 30- by 60-minute topographic quadrangle, San Juan County, New Mexico.



23N10W.26.322
X Unknown prospect near
Kimbeto
U reported probably contaminated

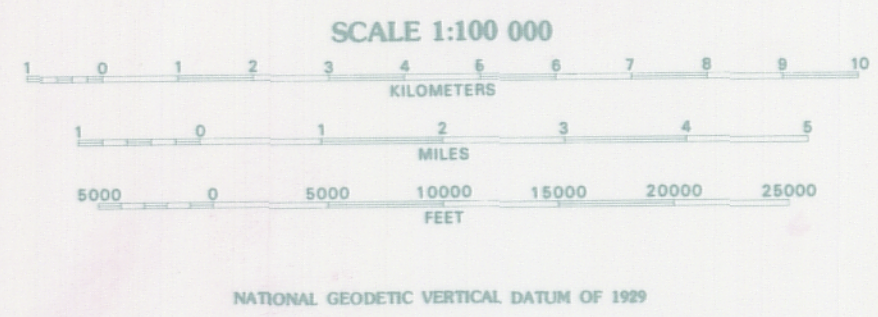
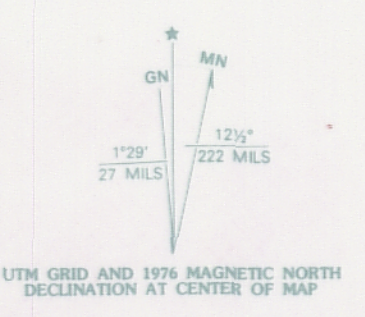
21N10W.32.544
Chaco Canyon -
Drill Hole C.C-12

21N9W.31.412
Chaco Canyon -
Drill Hole C.C-B

5000 ft depth contour to top of Morrison Formation

INDEX TO 1:24 000 AND 1:62 500-SCALE MAPS

1	2	3	4	5	6	7
8	9	10	11	12	13	
14	15	16	17	18	19	20
21	22	23	24	25	26	27
28	29					



Moderate
Low
Very low for Morrison, Todito,
and Dakota Formations, Low
for other rocks to 5,000 ft

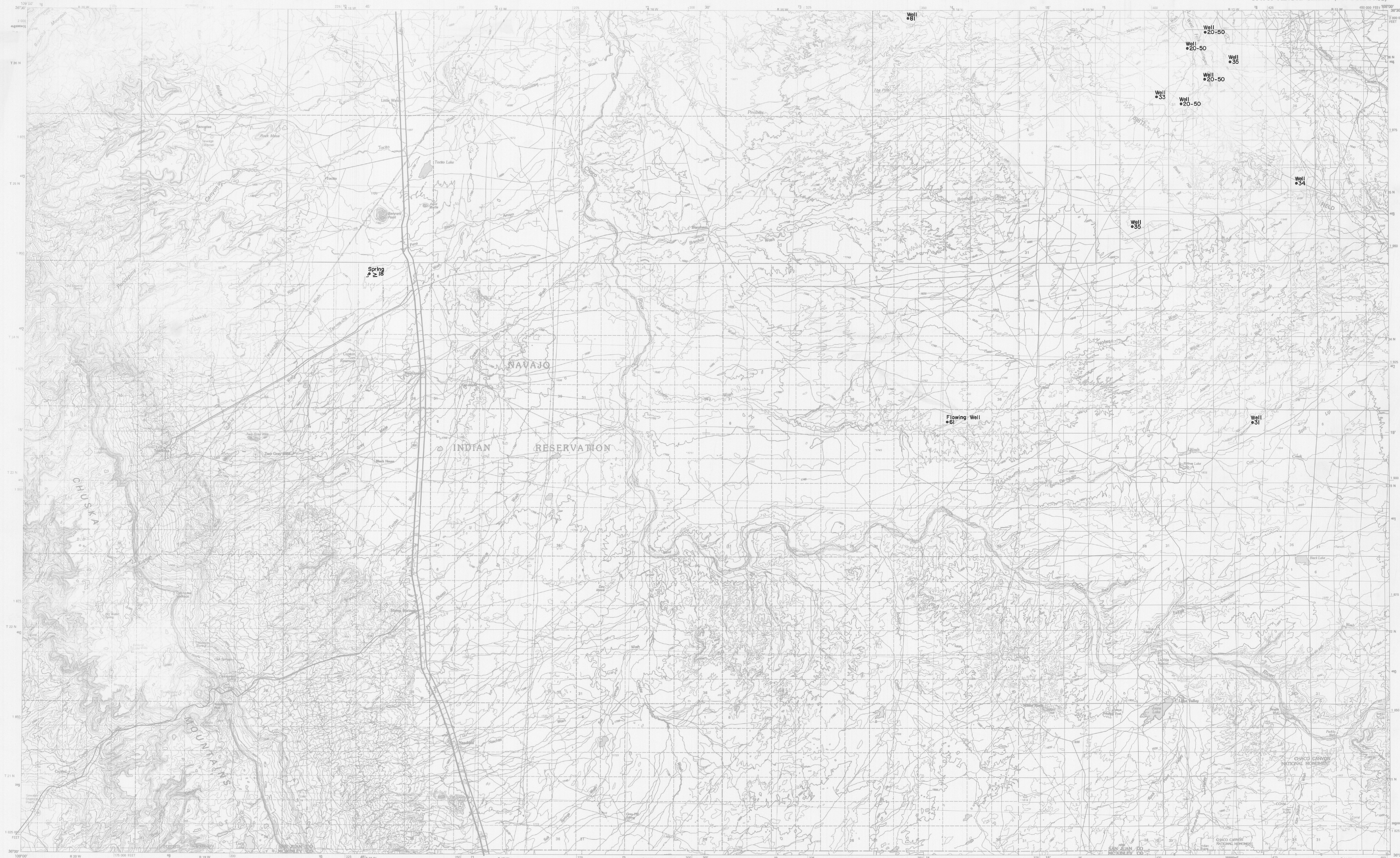
LEGEND

- Parental stream, lake
- Intermittent stream, lake
- Village or locality
- Landmark structure
- Public park or recreation area
- Forest or game land area
- Other public area or military or Indian reservation

ROAD CLASSIFICATION

- Primary highway, hard surface
- Secondary highway, hard surface
- Light-duty road, hard or improved surface
- Street or unimproved road
- Trail
- Interstate route
- U.S. route
- State route

MAP 81 Mineral occurrences, prospects, mines, and resource potential for Chaco Canyon 30- by 60-minute topographic quadrangle, San Juan and Rio Arriba Counties, New Mexico.



SCALE 1:100 000
1 CENTIMETER ON THE MAP REPRESENTS 1 KILOMETER ON THE GROUND.
CONTOUR INTERVAL 20 METERS

- Well
- Spring
- 31 Temperature, °C
- Very low

MAP 82 Geothermal wells and resource potential in the Toadlena 30- by 60-minute topographic quadrangle, San Juan County, New Mexico.

OF-232, 233
Map 84.

NAVAJO RESERVOIR, NEW MEXICO

30X60 MINUTE SERIES (TOPOGRAPHIC)



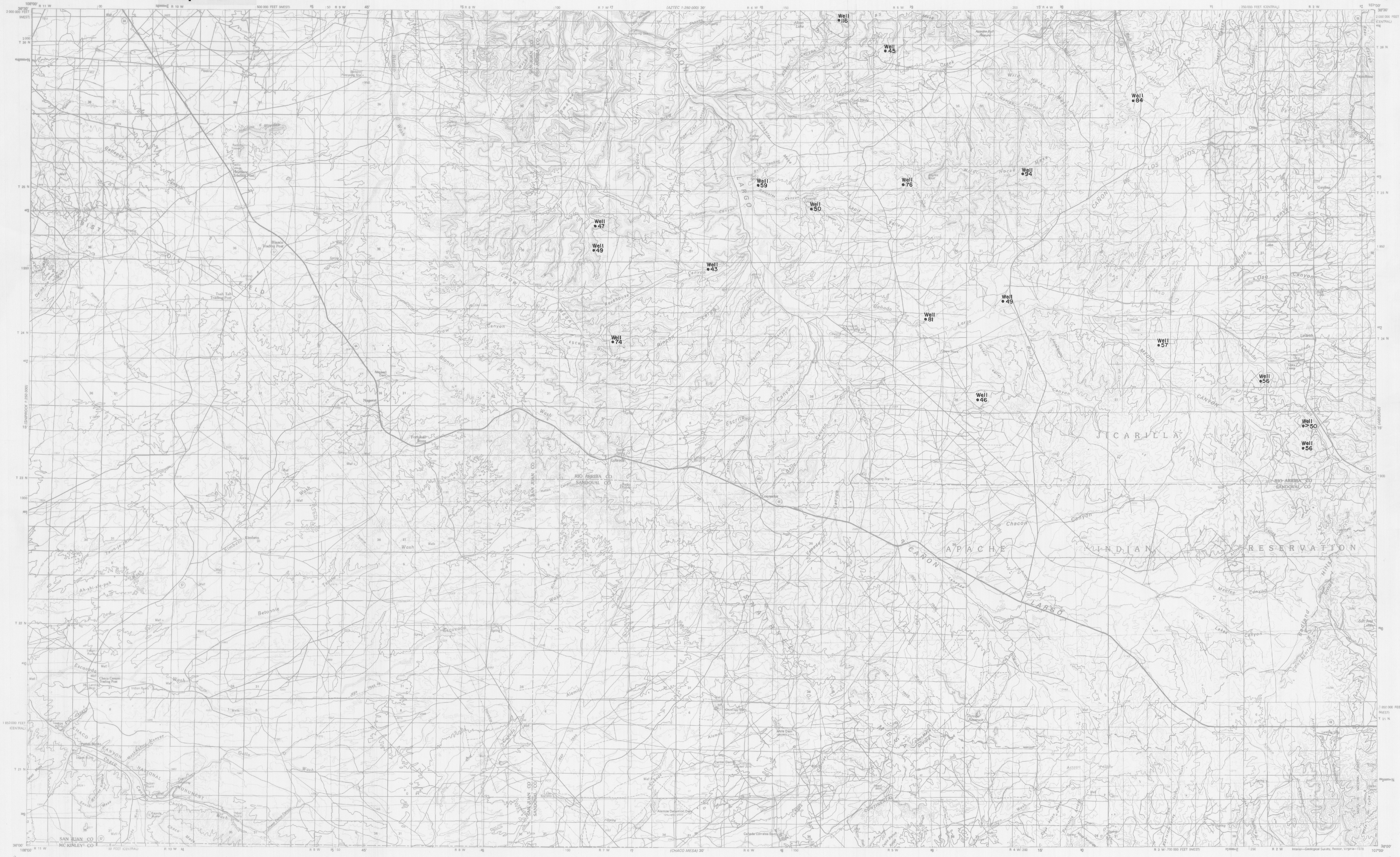
SCALE 1:100 000
1 CENTIMETER ON THE MAP REPRESENTS 1 KILOMETER ON THE GROUND
CONTOUR INTERVAL 50 METERS

● Well
● Spring
33 Temperature, °C
□ Very low

NAVAJO RESERVOIR, NEW MEXICO
N3630-W10700/30x60

1980

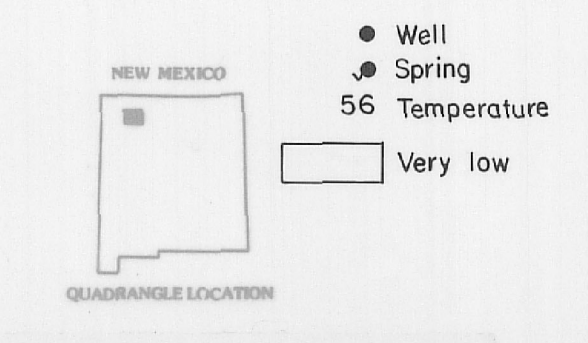
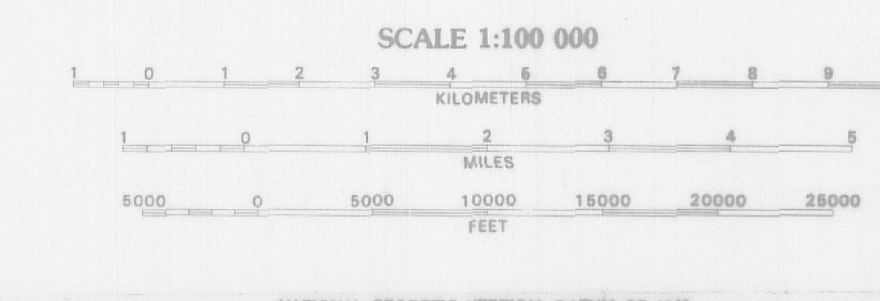
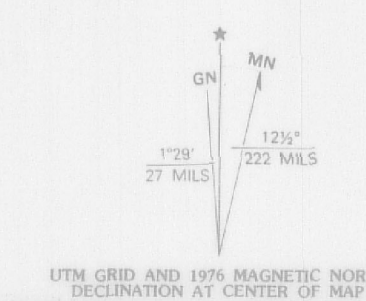
MAP 84 Geothermal wells and resource potential in the Navajo Reservoir in the 30- by 60-minute topographic quadrangle, San Juan and Rio Arriba Counties, New Mexico.



Mapped, edited, and published by the Geological Survey
Compiled in 1976 from USGS 1:24 000 and 1:62 500-scale topographic maps dated 1959-1967. See index for dates of individual maps.
Partially revised from aerial photographs taken 1973-1976 and from other official sources. Revised information not field checked.
Projection and 10 000-meter grid, zone 13: Universal Transverse Mercator
50 000-foot grid ticks based on New Mexico coordinate system, central and west zones. 1927 North American datum.
Areas covered by dashed light-blue patterns are subject to controlled inundation.

INDEX TO 1:24 000 AND 1:62 500-SCALE MAPS

1	2	3	4	5	6	7	8	9	10	11	12	13	14	15	16	17	18	19	20	21	22	23	24	25	26	27	28	29
---	---	---	---	---	---	---	---	---	----	----	----	----	----	----	----	----	----	----	----	----	----	----	----	----	----	----	----	----



LEGEND

- Perennial stream, lake
- Intermittent stream, lake
- Village or locality
- Landmark structure
- Public park or recreation area
- Forest or game land area
- Other public area or military or Indian reservation

ROAD CLASSIFICATION

- Primary highway, hard surface
- Secondary highway, hard surface
- Light-duty road, hard or improved surface
- Street or unimproved road
- Trail

Interstate route
 U.S. route
 State route

MAP 85 Geothermal wells and resource potential in the Chaco Canyon 30- by 60-minute topographic quadrangle, San Juan and Rio Arriba Counties, New Mexico.