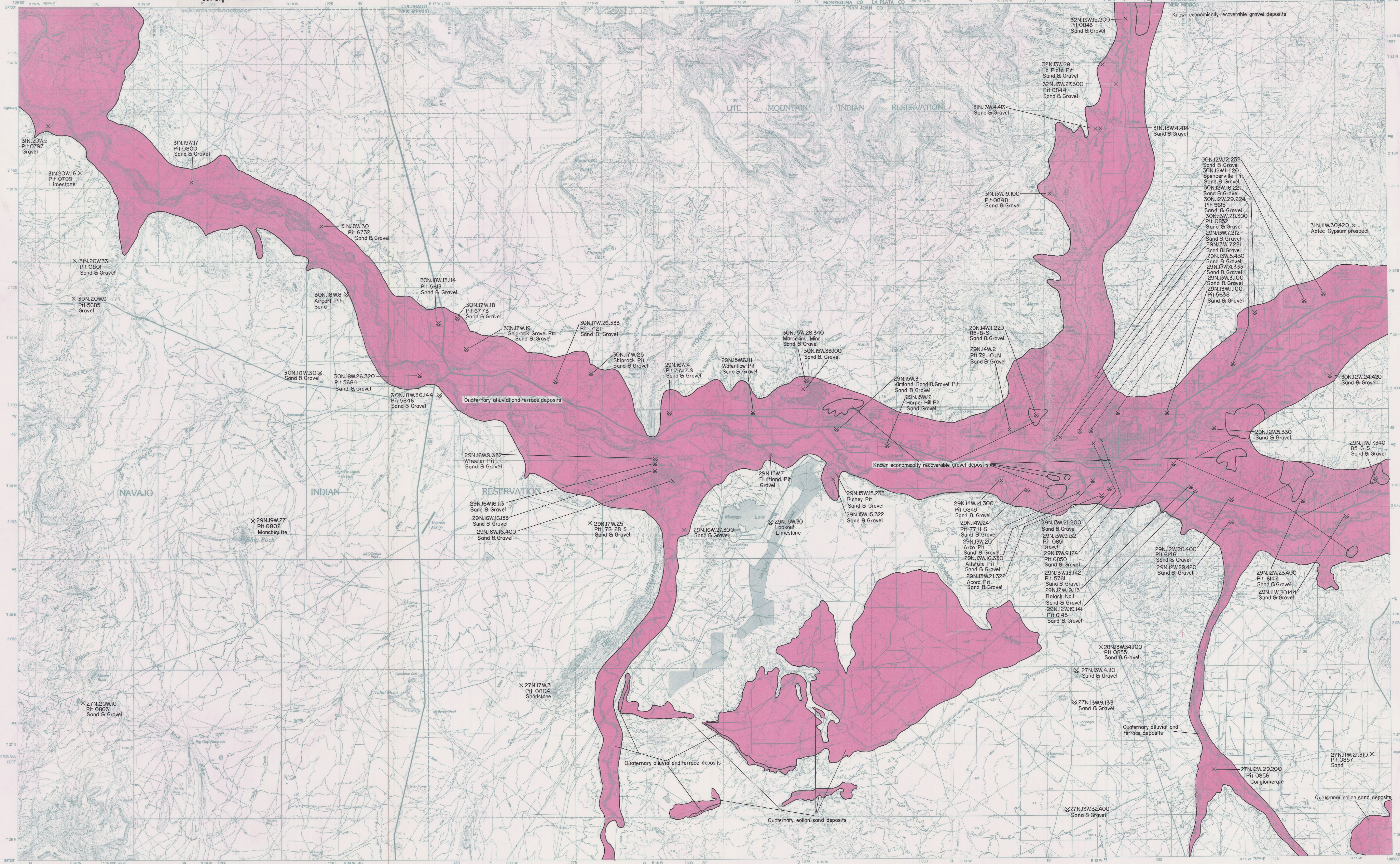


**MAP 86** Aggregate pits and resource potential in the Toadlena 30- by 60-minute topographic quadrangle, San Juan County, New Mexico.

✕ Materials pit, produced  
 X Pit, production unknown  
 High  
 Very low



SCALE 1:100 000  
1 CENTIMETER ON THE MAP REPRESENTS 1 KILOMETER ON THE GROUND  
CONTOUR INTERVAL 20 METERS

KILOMETERS 1 2 3 4 5 6 7 8 9 10 11 12 13 14 15 16 17 18 19 20  
MILES 1 2 3 4 5 6 7 8 9 10 11 12 13

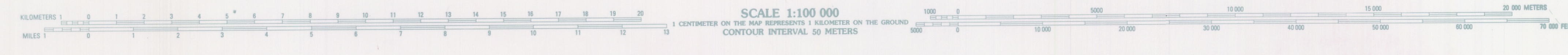
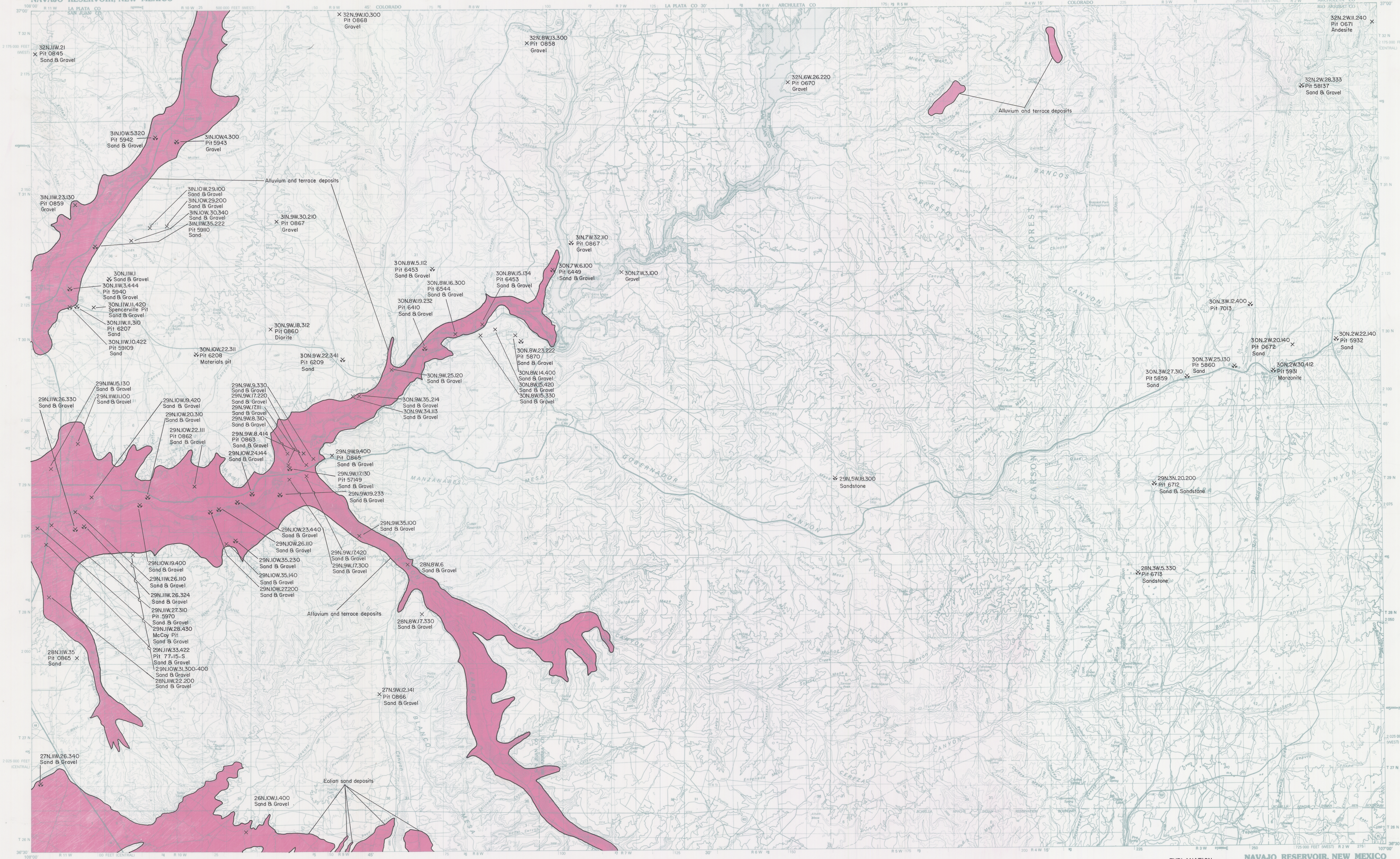
FARMINGTON, NEW MEXICO-COLORADO  
N3630-W10800/30x60

x Materials pit produced  
 x Pit, production unknown  
 High  
 Very low

MAP 87 Aggregate pits and resource potential in the Farmington 30- by 60-minute topographic quadrangle, San Juan County, New Mexico.

**OF-232, 233**  
**Map 88.**  
**NAVAJO RESERVOIR, NEW MEXICO**

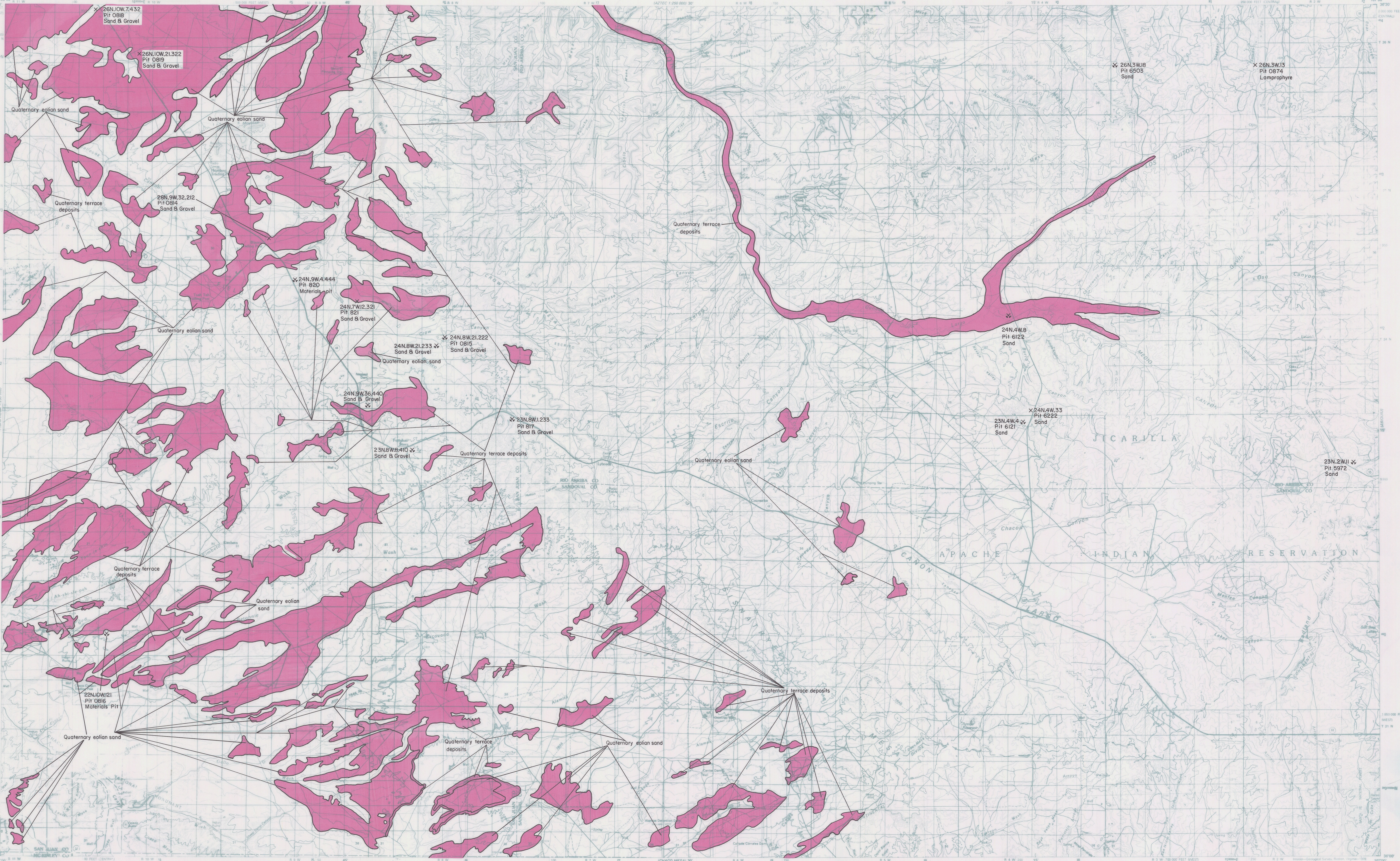
30x60 MINUTE SERIES (TOPOGRAPHIC)



- EXPLANATION**
- ✕ Materials pit, produced
  - ✕ Pit, production unknown
  - High
  - Very low

**NAVAJO RESERVOIR, NEW MEXICO**  
**N3630-W10700/30x60**  
**1980**

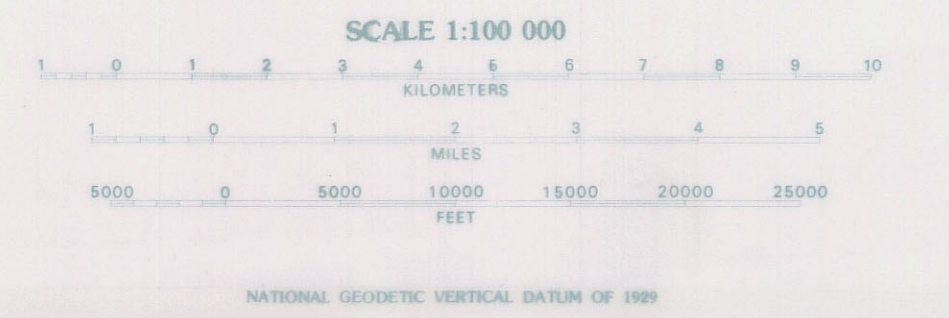
**MAP 88 Aggregate pits and resource potential in the Navajo Reservoir 30- by 60-minute topographic quadrangle, San Juan and Rio Arriba Counties, New Mexico.**



Map 89, edited, and published by the Geological Survey  
Compiled in 1976 from USGS 1:250 000 and 1:50 000-scale topographic  
maps dated 1973-1967. See index for dates of each 30-minute map.  
Partially revised from aerial photographs taken 1973-1976  
and from other official sources. Revised information not field checked.  
Projection and 10 000-meter grid, zone 13, Universal  
Transverse Mercator.  
10 000-foot grid ticks based on New Mexico's official  
system, central and west zones, 1927 North American datum.  
Areas covered by dashed light-blue pattern are subject  
to controlled inundation.

INDEX TO 1:250 000 AND 1:50 000-SCALE MAPS

1	2	3	4	5	6	7	8	9	10	11	12	13			
14	15	16	17	18	19	20	21	22	23	24	25	26	27	28	29



NEW MEXICO

Materials pit, produced  
Pit, production unknown

High  
Very low

QUADRANGLE LOCATION

LEGEND

Perennial stream, lake  
Intermittent stream, lake  
Village or locality  
Landmark structure  
Public park or recreation area  
Forest or game land area  
Other public area or Military or Indian reservation

ROAD CLASSIFICATION

Primary highway, hard surface  
Secondary highway, hard surface  
Light-duty road, hard or improved surface  
Street or unimproved road  
Trail  
Interstate route  
U.S. route  
State route

MAP 89 Aggregate pits and resource potential in the Chaco Canyon 30- by 60-minute topographic quadrangle, San Juan and Rio Arriba Counties, New Mexico.



MAP 90 Resource potential for crushed and dimension stone, mica, and silica sand in the Toadlena 30- by 60-minute

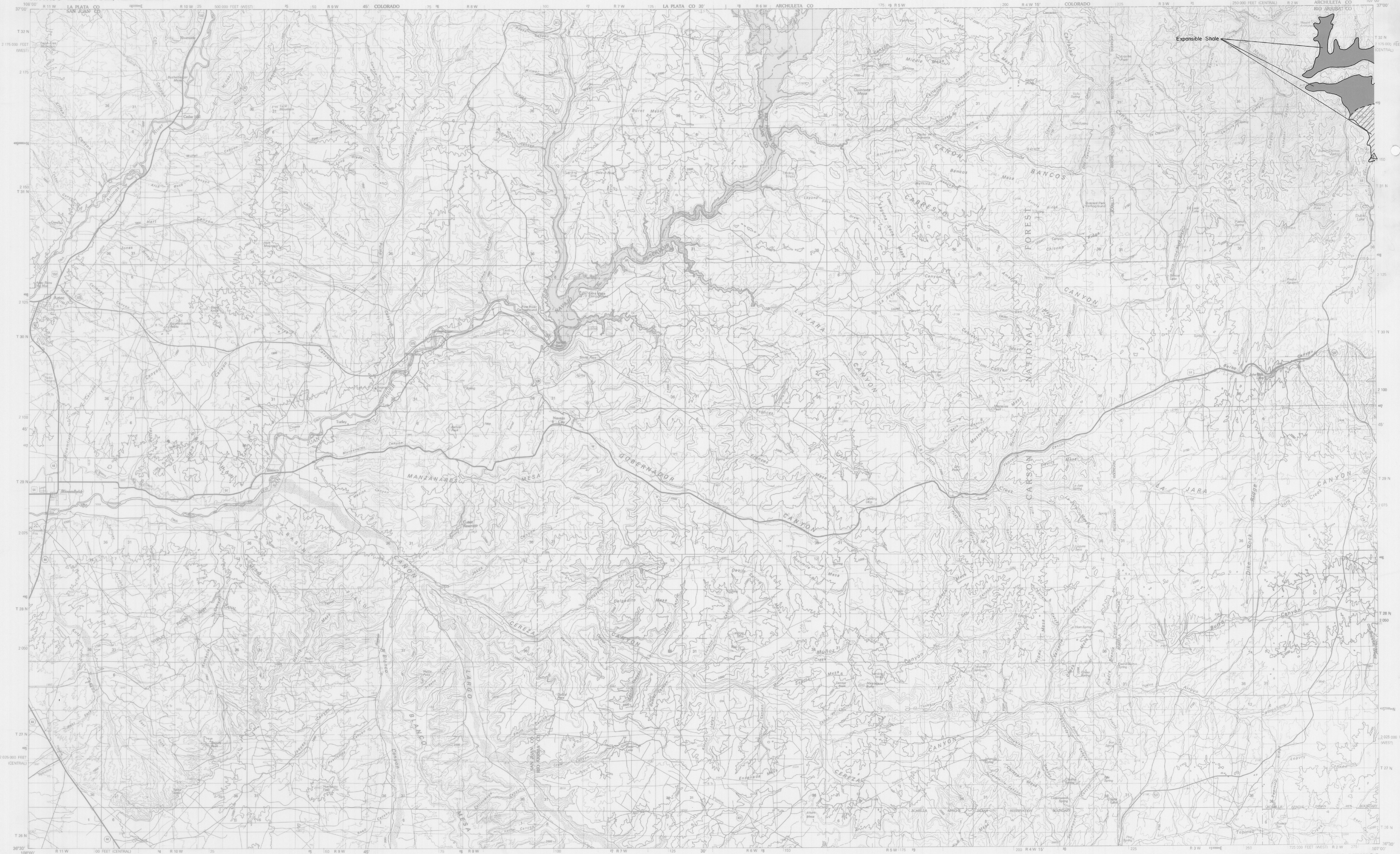
TOADLENA, NEW MEXICO  
N3600-W10800/30 X 60  
1980

SCALE 1:100 000  
1 CENTIMETER ON THE MAP REPRESENTS 1 KILOMETER ON THE GROUND  
CONTOUR INTERVAL 20 METERS

Legend:  
Moderate (Red diagonal hatching)  
Low (Light pink)  
Unknown (Yellow)  
Very low (White)



**MAP 91** Resource potential for crushed and dimension stone, mica, and silica sand in the Farmington 30- by 60-minute topographic quadrangle, San Juan County, New Mexico.



SCALE 1:100 000  
1 CENTIMETER ON THE MAP REPRESENTS 1 KILOMETER ON THE GROUND  
CONTOUR INTERVAL 50 METERS

High  
Very low  
Unknown

NAVAJO RESERVOIR, NEW MEXICO  
N3630-W10700/30x60  
1980

MAP 92 Resource potential for crushed and dimension stone, mica, and silica sand in the Navajo Reservoir  
30- by 60-minute topographic quadrangle, San Juan and Rio Arriba Counties, New Mexico.

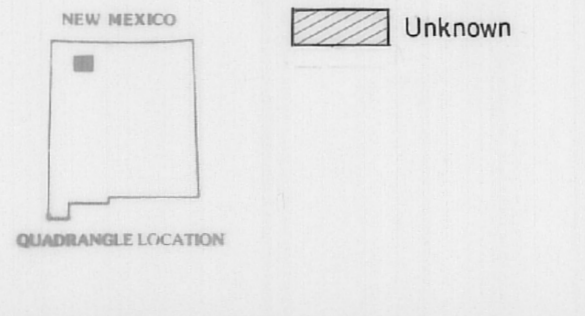
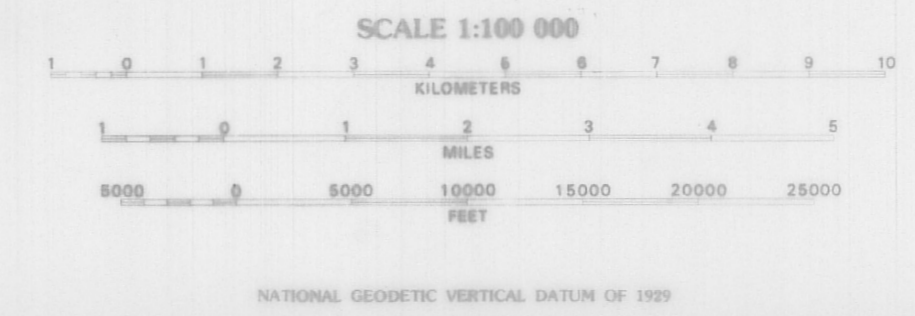


Mapped, edited, and published by the Geological Survey  
Compiled in 1976 from USGS 1:24 000 and 1:62 500-scale topographic maps dated 1959-1967. See index for dates of individual maps  
Partially revised from aerial photographs taken 1973-1976 and from other official sources. Revised information not field checked  
Projection and 10 000-meter grid, zone 13; Universal Transverse Mercator  
50 000-foot grid ticks based on New Mexico coordinate system, central and west zones. 1927 North American datum  
Areas covered by dashed light-blue pattern are subject to controlled inundation

INDEX TO 1:24 000 AND 1:62 500-SCALE MAPS

1	2	3	4	5	6	7	16	17	18	19	20	21		
8	9	10	11	12	13	14	22	23	24	25	26	27	28	29

- 16 Huebner Trading Post 1900-1906
- 17 Huebner Trading Post 1907-1947
- 18 Huebner Trading Post 1948-1967
- 19 Huebner Trading Post 1968-1976
- 20 Huebner Trading Post 1977-1986
- 21 Huebner Trading Post 1987-1996
- 22 Huebner Trading Post 1997-2006
- 23 Huebner Trading Post 2007-2016
- 24 Huebner Trading Post 2017-2026
- 25 Huebner Trading Post 2027-2036
- 26 Huebner Trading Post 2037-2046
- 27 Huebner Trading Post 2047-2056
- 28 Huebner Trading Post 2057-2066
- 29 Huebner Trading Post 2067-2076



- Very low  
Unknown
- LEGEND
- Perennial stream, lake
  - Intermittent stream, lake
  - Village or locality
  - Landmark structure
  - Public park or recreation area
  - Forest or game land area
  - Other public area or Military or Indian reservation

- ROAD CLASSIFICATION
- Primary highway, hard surface
  - Secondary highway, hard surface
  - Light-duty road, hard or improved surface
  - Street or unpaved road
  - Trail
  - Interstate route
  - U.S. route
  - State route

**MAP 93** Resource potential for crushed and dimension stone, mica, and silica sand in the Chaco Canyon 30- by 60-minute topographic quadrangle, San Juan and Rio Arriba Counties, New Mexico.