

Geology of the Capitan and Nogal Quadrangles, Lincoln County, New Mexico - Cross Sections

by Geoffrey Rawling

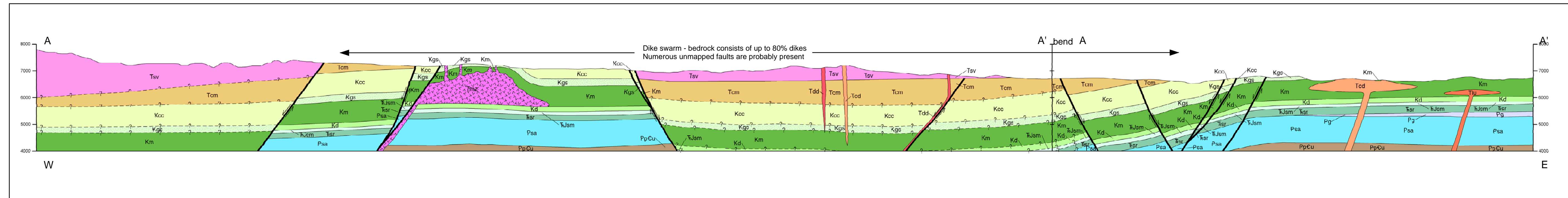
Open-file Report 538
Revised February 2014

All sections 1:24000
1" = 2000 feet
no vertical exaggeration
vertical scales in feet above mean sea level

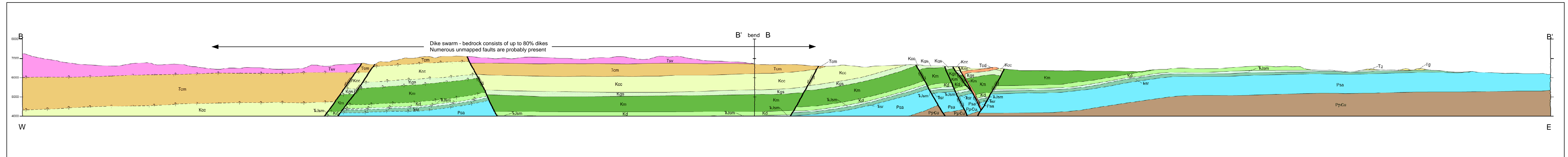


apparent sense of dip-slip motion

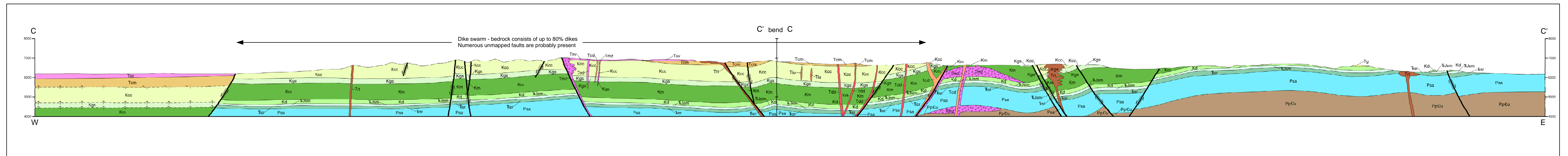
Nogal A A' - Capitan A A'



Nogal B B' - Capitan B B'



Nogal C C' - Capitan C C'



Nogal D D' - Capitan D D'

