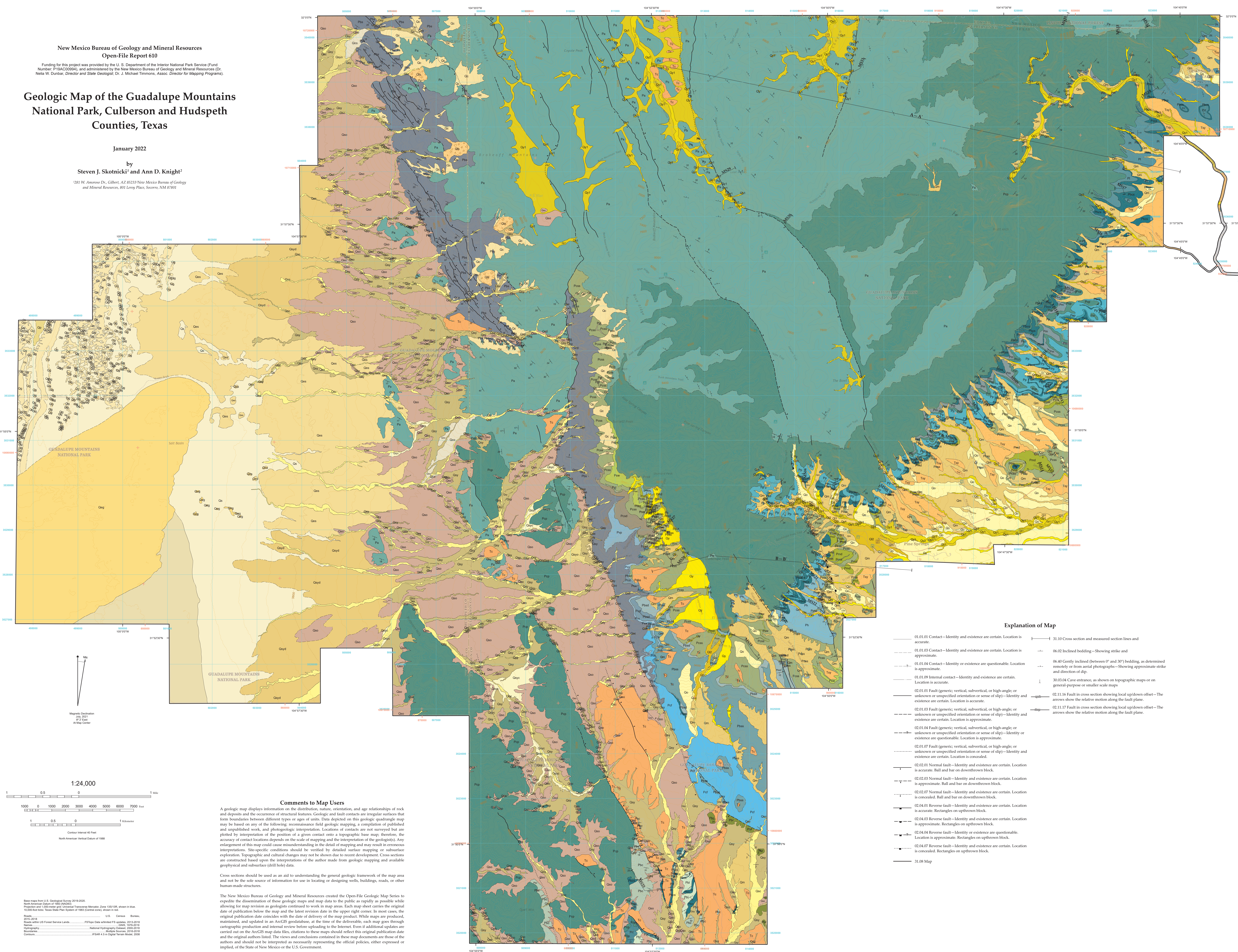
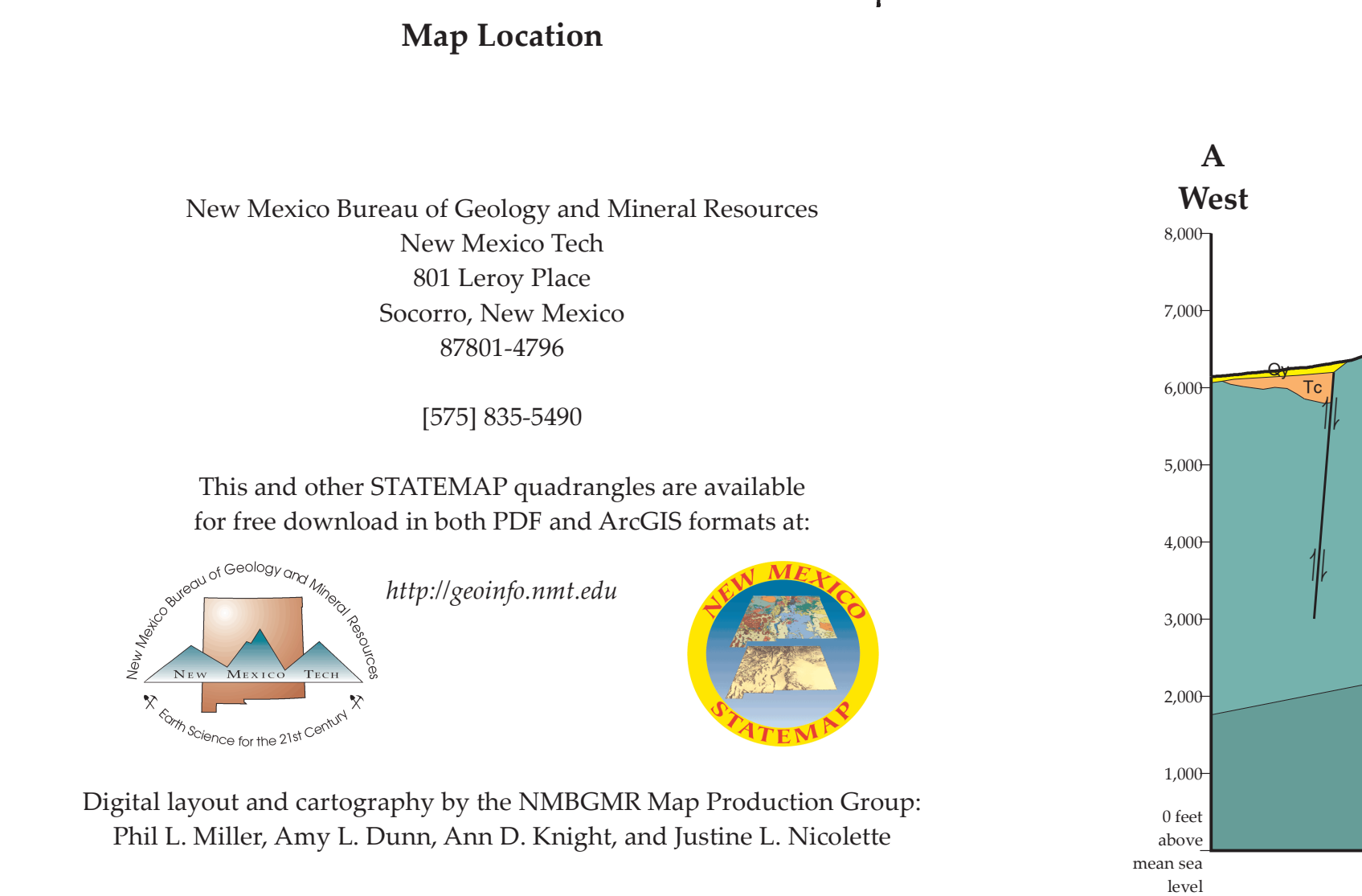
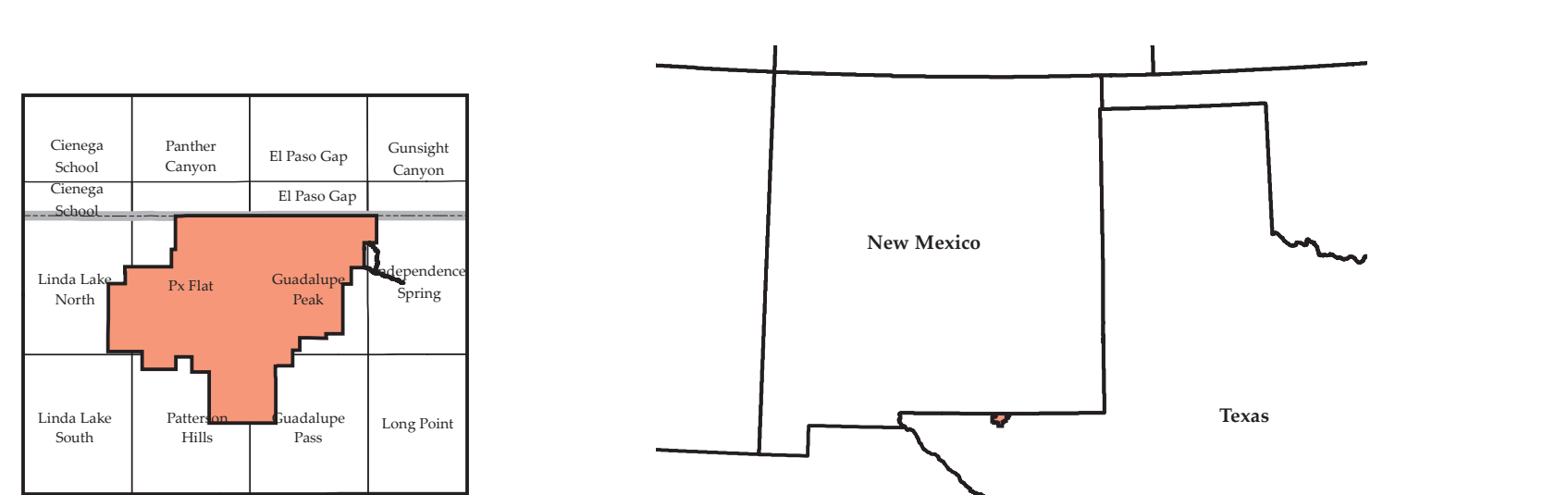


New Mexico Bureau of Geology and Mineral Resources
Open-File Report 610
Geologic Map of the Guadalupe Mountains National Park, Culberson and Hudspeth Counties, Texas
January 2022
by Steven J. Skotnicki and Ann D. Knight



Comments to Map Users
A geologic map displays information on the distribution, nature, orientation, and age relationships of rock and deposits and the occurrence of structural features. Geologic and fault contacts are irregular surfaces that form boundaries between different types or ages of units.

Map Location
New Mexico Bureau of Geology and Mineral Resources
New Mexico Tech
801 Leroy Place
Socorro, New Mexico
87801-4726



Digital layout and cartography by the NMBCMR Map Production Group
Thal J. Miller, Amy L. Dunn, Ann D. Knight, and Justine L. Nicolette

Explanation of Map

Legend table with symbols for contact types, faults, and geological features. Includes symbols for 02.01.01 Contact - Identity and existence are certain, 02.01.02 Fault generic, vertical, subvertical, or high-angle, etc.

Description of Map Units

Q1 - Quaternary - Alluvial fan deposits (Alluvial fan deposits) - These units are composed of unconsolidated, poorly sorted, and fine-grained sand and silt. They are deposited by the Guadalupe Mountains Escarpment and nearby Arises.

Correlation of Map Units

Stratigraphic correlation chart showing the relationship between map units and standard geological time scales. Includes columns for Quaternary, Tertiary, and Paleozoic eras with corresponding map unit symbols.