

Health Impacts of Water Scarcity and Heat

Chelsea Eastman Langer, PhD, MPH

Environmental Public Health Tracking Program

Chelsea.Langer@doh.nm.gov

Jared Ellsworth, MPH

Environmental Health Capacity Program

Jared.Ellsworth@doh.nm.gov

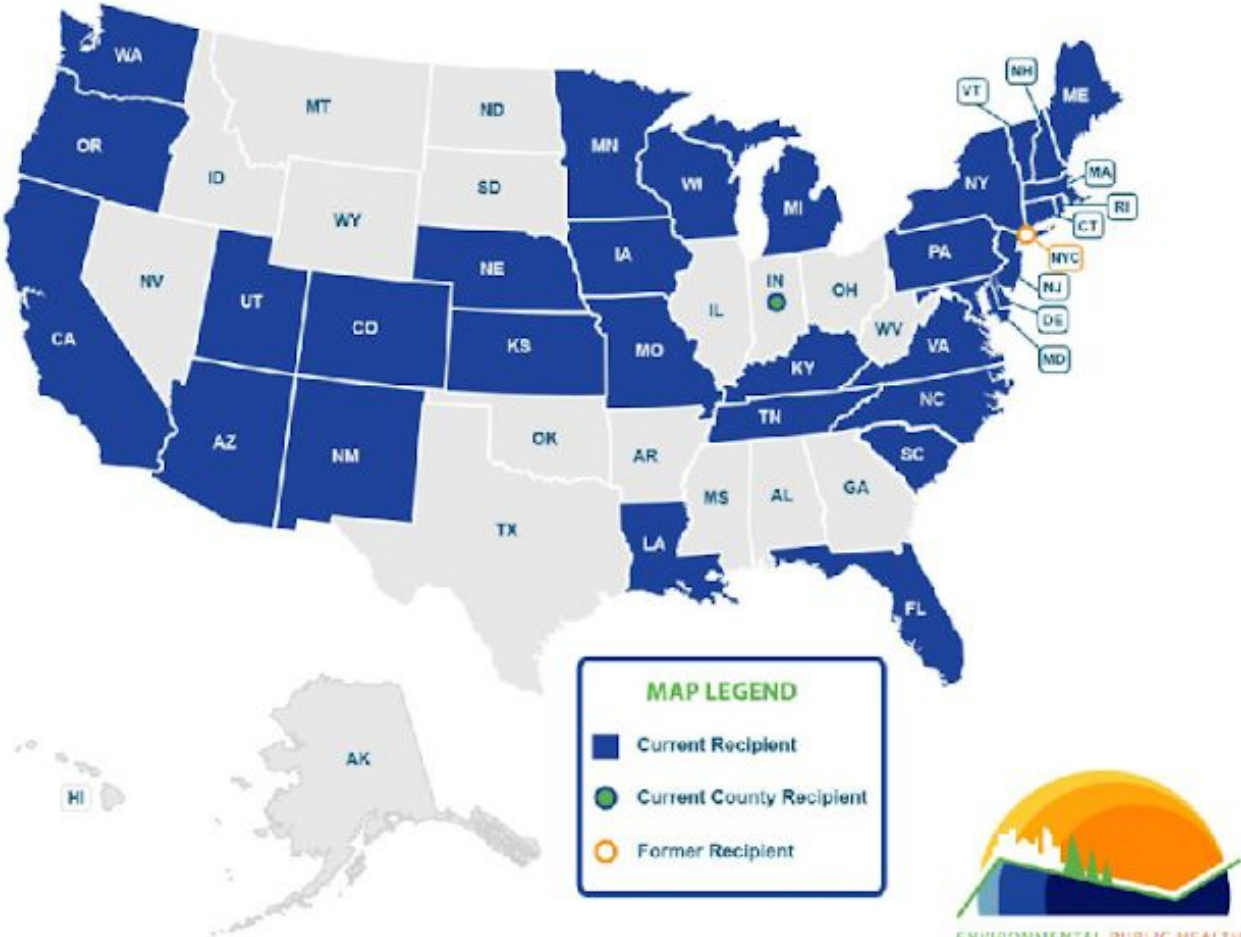
Environmental Health Epidemiology Bureau

Epidemiology and Response Division

December 8, 2023

Environmental Public Health Tracking (EPHT)

CDC's National Environmental Public Health Tracking Program



August 2022



Investing for tomorrow, delivering today.

1190 S. St. Francis Drive • Santa Fe, NM 87505 • Phone: 505-827-2613 • Fax: 505-827-2530 • nmhealth.org

<https://ephtracking.cdc.gov/>



Welcome to New Mexico Tracking

Click [here](#) to go straight to the data.

The New Mexico Environmental Public Health Tracking program, "NM EPHT", also known as "NMTracking", is the premiere resource for environmental and health data and information in New Mexico. The NM EPHT is part of the National Environmental Public Health Tracking Network.

The NMTracking portal can help you learn how the environment may be affecting health. Learn about environmental health issues in your community and what you can do to protect yourself and your family. Use this website to answer questions about air quality, drinking water, cancer, and a wide variety of other topics.

To get started click on one of the above main topic selections.

<https://nmtracking.doh.nm.gov>

How drought impacts New Mexicans

Heat-related illness is rising.

Air quality is deteriorating from increased wildfire smoke and dust.

Heat and drought, loss of loved natural places, changing economics and the threat of ongoing and worsening climate and environmental health are contributing to degrading mental health.

Water sources are changing in much of the state, exposing families to new contaminants.

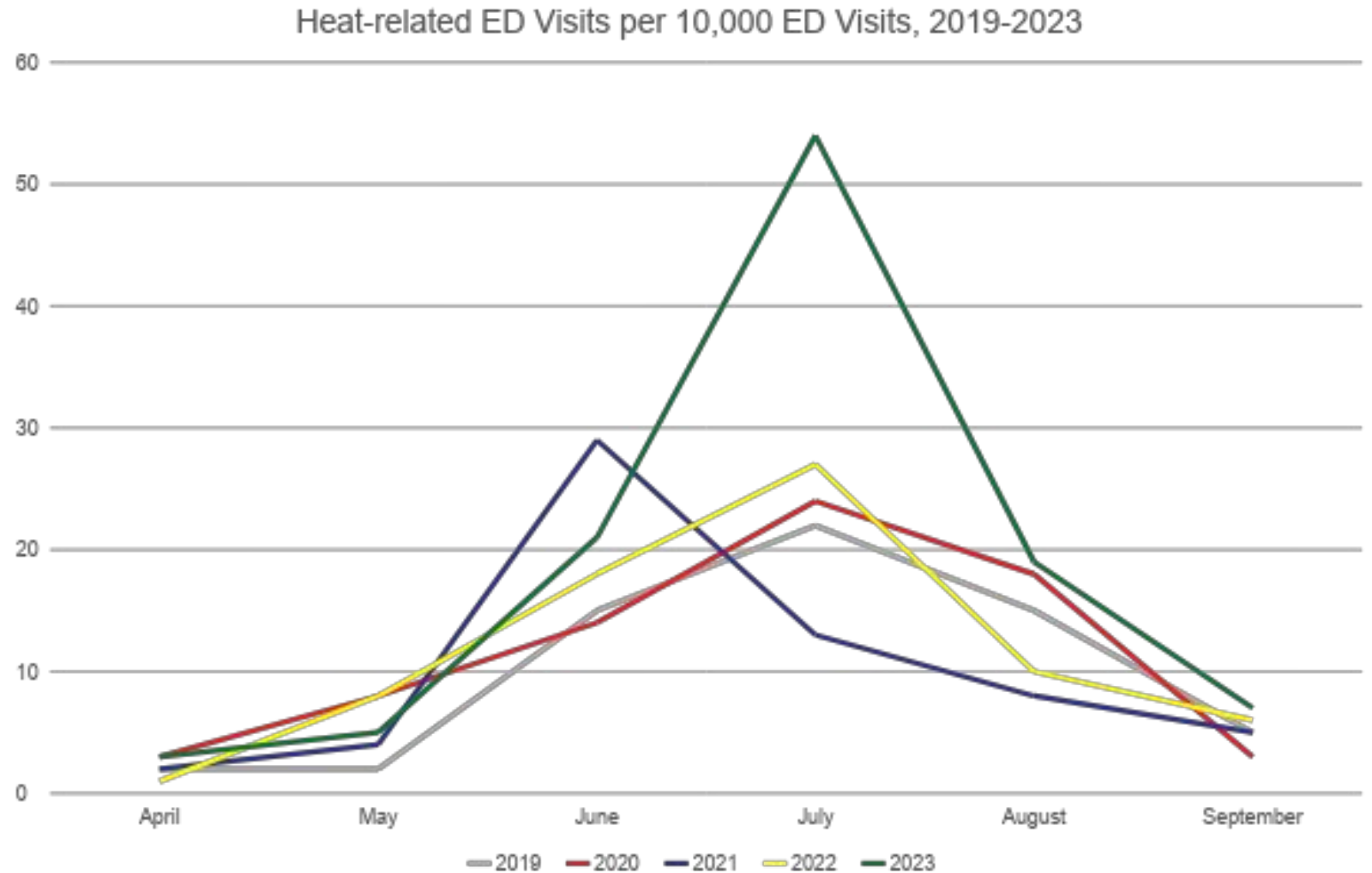
Prolonged drought is impacting the resilience of our agricultural communities - economic losses putting a strain on families.



Heat Surveillance: Summer 2023, Statewide

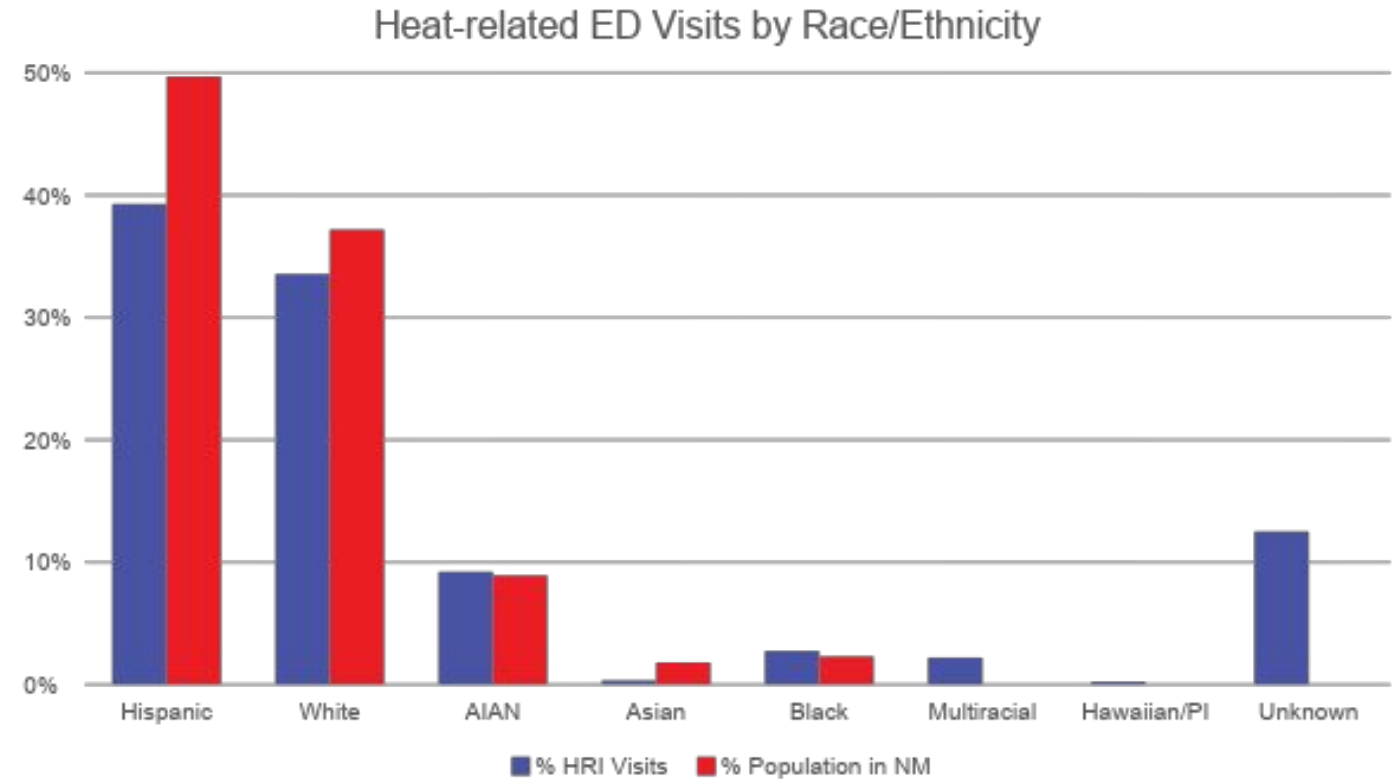
April 1 – September
30

- 67 days $\geq 100^{\circ}\text{F}$
- 912 heat-related ED visits (NSSP)
- 48% of visits in July



Heat Surveillance: Summer 2023, Statewide

- 67% males
- Miscellaneous findings from clinical notes
 - ~6% outdoor workers (~13% with context)
 - 5% unhoused (~10% with context)
 - Over 50% clinical notes left blank



Dissemination Activities

- Weekly report to NMDOH Cabinet Secretary, July – August
- Weekly statewide update to NMTracking newsroom: <https://nmtracking.doh.nm.gov/newsroom/Introduction.html>
- Press releases
- Media interviews

¿Qué riesgos presenta el calor para tu salud?

Según el NMDOH, ya en abril, los nuevomexicanos visitan la sala de emergencias con síntomas de calambres por calor, agotamiento por calor o insolación.

Por Grest-Marie Colón, TELEMUNDO NUEVO MEXICO • Publicado el 27 de junio del 2023 • Actualizado a las 5:33 pm del 28 de junio del 2023



SANTA FE - Ante la llegada del verano y sus temperaturas exageradamente altas, superando los tres dígitos en varias regiones del estado, el Departamento de Salud de Nuevo México (NMDOH),

<https://www.telemundo48elpaso.com/noticias/local/que-riesgos-presenta-el-calor-para-tu-salud/2211401/>

Heat and Mental Health



Of 2023 HRI ED Visits:

- 2.7% had schizophrenia, schizoaffective disorder, or bipolar disorder
- 5.9% had broader mental illness (CDC Mental Health v1)

Summer 2023: Migrant Deaths

El Paso had 70 days $\geq 100^{\circ}\text{F}$ between April 1 and September 30, 2023.

Not captured in NSSP or EMS database, ~100 migrants died crossing at or near Sunland Park this summer.

From newspaper reports, migrants are usually found by Border Patrol and/or law enforcement and the deaths investigated by OMI.



https://www.santafenewmexican.com/news/local_news/new-mexico-border-city-says-its-suffering-consequences-of-illegal-immigration/article_e9e27ea2-525c-11ee-9f55-47422ed7760c.html

<https://www.elpasotimes.com/story/news/local/2023/09/10/sunland-park-desert-deaths-two-women-new-mexico/70816570007/>

Air Quality: Wildfires + Smoke Coordination Calls



NM Smoke Coordination Agenda

- **Regional Weather Overview** -- Rich Naden, SWCC / Kerry Jones, FS
- **Forecast Details/Concerns** -- NWS ABQ/NWS EPZ
- **Current Fire Status / Smoke Monitor Update** -- Kerry Jones, FS
- **Smoke Forecasts and Trends** -- ARAs/NWS/All
- **Partner Updates/Concerns** -- All
- **Air Quality Alert (AQA) Update**

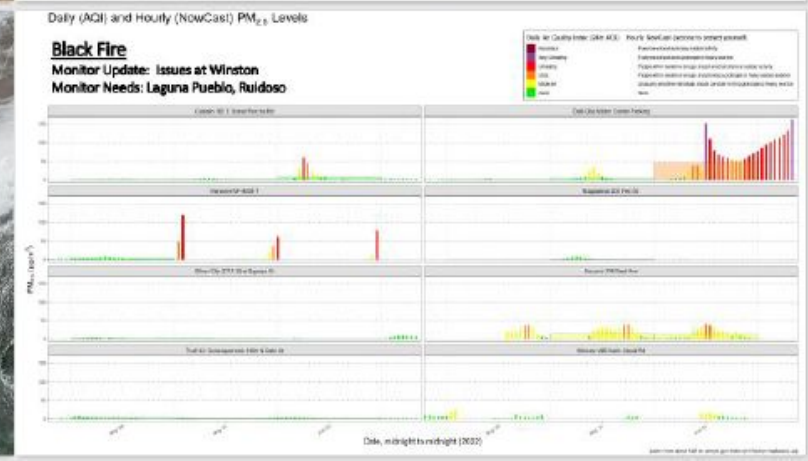
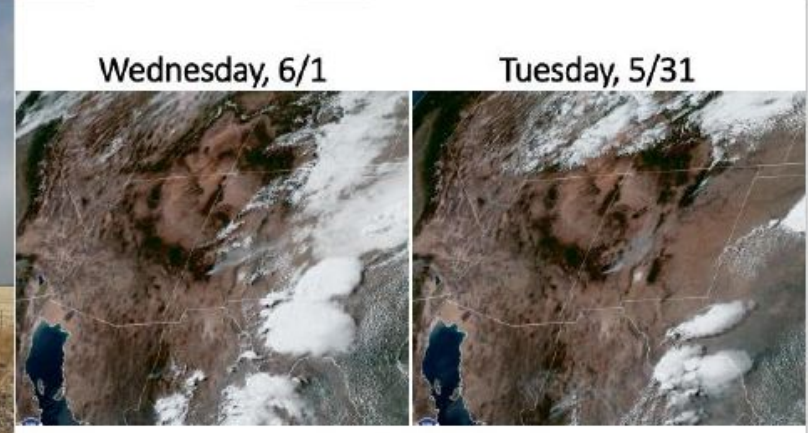
Yesterday's Visible Image - ~4:30pm MDT

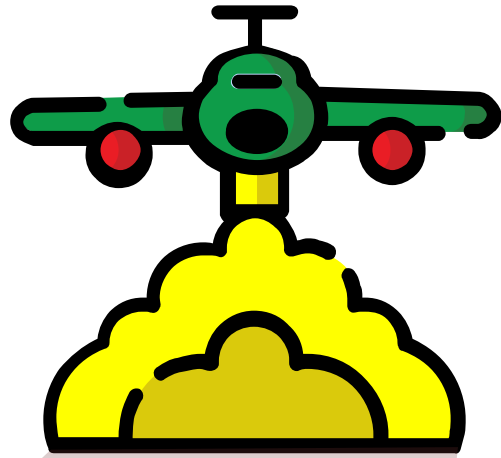
Black → 262,695 ac. 26% (+1)
 24-hr **233,333 ac.** 3-day: **+21,292 ac.**
 ARA: Yancey Ranspot

Hermits Peak-Calf Canyon → 316,353 ac. 54% (NC)
 24-hr **833,333 ac.** 3-day: **1,130 ac.**
 ARA: Jayson Prentice

Bear Trap → 38,225 ac. 90%
 24-hr **410,000 ac.** 3-day: **1,130 ac.**

Foster → 7,512 ac. 37%
 24-hr **833,333 ac.** 3-day: **1,130 ac.**





4 counties

Impacted by the 2022 fire season

18,000 wells

14% of private wells in state within these 4 counties



NMED and NMDOH are hosting a water fair from 8:30 am to noon on Saturday, June 4 at the Mora County Complex. Residents who rely on private wells can get their drinking water tested free of charge (a \$150 value). Learn more at <https://bit.ly/3acj242>

Free Private Well Water Testing

8:30 a.m. – 12:00 p.m.
Saturday, June 4
 Mora County Complex
 1 Courthouse Dr.
 Mora, NM 87732




8

4 comments 96 shares

Like

Comment

Share



Investing for tomorrow, delivering today.

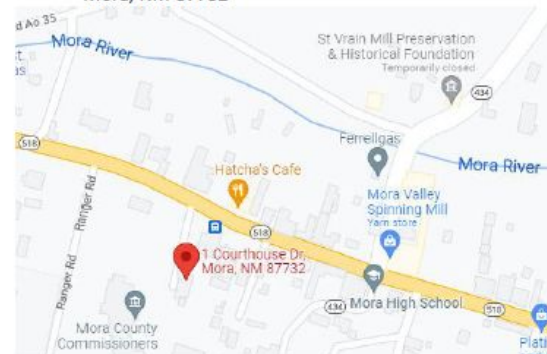
1190 S. St. Francis Drive • Santa Fe, NM 87505 • Phone: 505-827-2613 • Fax: 505-827-2530 • nmhealth.org

ANALISIS GRATUITO DE LA CALIDAD DEL AGUA PARA POZOS PRIVADOS

Que: NMED y NMDOH ofrecerán hasta 100 pruebas de agua gratuitas para pozos privados que abastecen a hogares que no están conectados a un servicio público de agua en Mora y comunidades circundantes.

Cuando: Sábado, 4 de Junio, 2022 de 8:30 – 12:00PM

Donde: Complejo del Condado de Mora
1 Courthouse Dr.
Mora, NM 87732



COMO RECOLECTAR UNA MUESTRA DE AGUA:

1. Llene un recipiente limpio de vidrio o plástico sin olores fuertes, con al menos un cuarto de galón o un litro (es decir, 32 OZ) de su agua de pozo.
2. Si la casa tiene un sistema de filtración para toda la casa, recolecte el agua en la cabecera del pozo antes de cualquier sistema de filtración o sistema de ablandador, si es posible.
3. Deje correr el agua 2-3 minutos antes de recolectar la muestra.
4. Recoja la muestra lo más cerca posible del momento de la prueba.

En el evento, recogeremos información sobre su pozo (es decir, sobre la construcción del pozo.)

Aquellos afectados por el fuego tendrán la oportunidad de analizar su agua para detectar bacterias.

www.env.nm.gov/gwqb/water-fairs/
nmtracking.doh.nm.gov/environment/water/PrivateWells.html



LAS PRUBAS INCLUYEN:

pH, conductividad eléctrica, nitrato, hierro, sulfato, fluoruro y arsénico



PATROCINADORES



(505) 827-2900



Harmful Algal Blooms (HABs)

- HABs are becoming more common in NM lakes and reservoirs
- Drink contaminated water or swim or do other recreational activities in water with HABs
- Associated illnesses:
 - Skin exposure can give people rash, hives, or blisters
 - Breathing in water droplets can cause runny eyes and nose, sore throat, asthma-like symptoms or allergic reactions
 - Swallowing water can cause abdominal pain, diarrhea, and vomiting



Drought and/or Flooding

- Collect, analyze, and share water data and health information
 - Private wells water quality inventory
 - Community water systems data
 - Water focused resources on NMTracking
- Disaster preparedness and response
 - Flooding (private wells)
 - Water system advisories
- Provided health-focused input into the state's water planning efforts with the Interstate Stream Commission and Office of the State Engineer



Acknowledgements

Funding for this presentation was made possible (in part) by the Centers for Disease Control and Prevention. The views expressed in written conference materials or publications and by speakers and moderators do not necessarily reflect the official policies of the Department of Health and Human Services, nor does the mention of trade names, commercial practices, or organizations imply endorsement by the U.S. Government.

Many staff members, past and current, have worked to build capacity for climate change preparedness:

- Current staff: Heidi Krapfl, Srikanth Paladugu, Stephanie Moraga-McHaley, Renee Volker-Rector, and Colin Hawkinson
- Previous staff: Barbara Toth, Carolyn Parshall (UNM intern), Gwendolyn Gallagher, Brad Whorton, Deyonne Sandoval, Sandra Cole, Sarah Shrum, Garry Kelley, Brian Woods, Tony Fristachi, Kendall Frimodig, Becca Neal (UNM intern), Noelle Martinez, and Rose Galbraith