

# Legend

## Geo\_Poly Label

- Km
- QTc
- QTsas
- Qa
- Qae
- Qae/Tc\_cs
- Qam
- Qao
- Qay
- Qca
- Qe
- Tc
- Tc\_cs
- Tc\_s
- Tc\_s(?)
- Tc\_sm
- Tcc
- Tcc\_m
- Tcc\_sm
- Tg
- Tob
- Ton
- Ton\_cs
- Ton\_m
- Ton\_s
- Ton\_s(?)
- Top
- Tzm
- Tzr
- af

## Lith\_Contacts

### ContactClass, Confidence, Exposure

- colorboundary
- contact, certain, exposed
- contact, certain, int-obscured
- contact, uncertain, int-obscured
- data, certain, exposed

## Fault\_Line

### Confidence, Exposure

- certain, concealed
- certain, exposed
- certain, int-obscured
- uncertain, int-obscured

## SymbolClass

- fault up down
- attitude

## GeoLineClass, GeoLineType, Exposure

- marker bed, algal, concealed

## InterpLineClass, InterpLineType

- aml, lineament

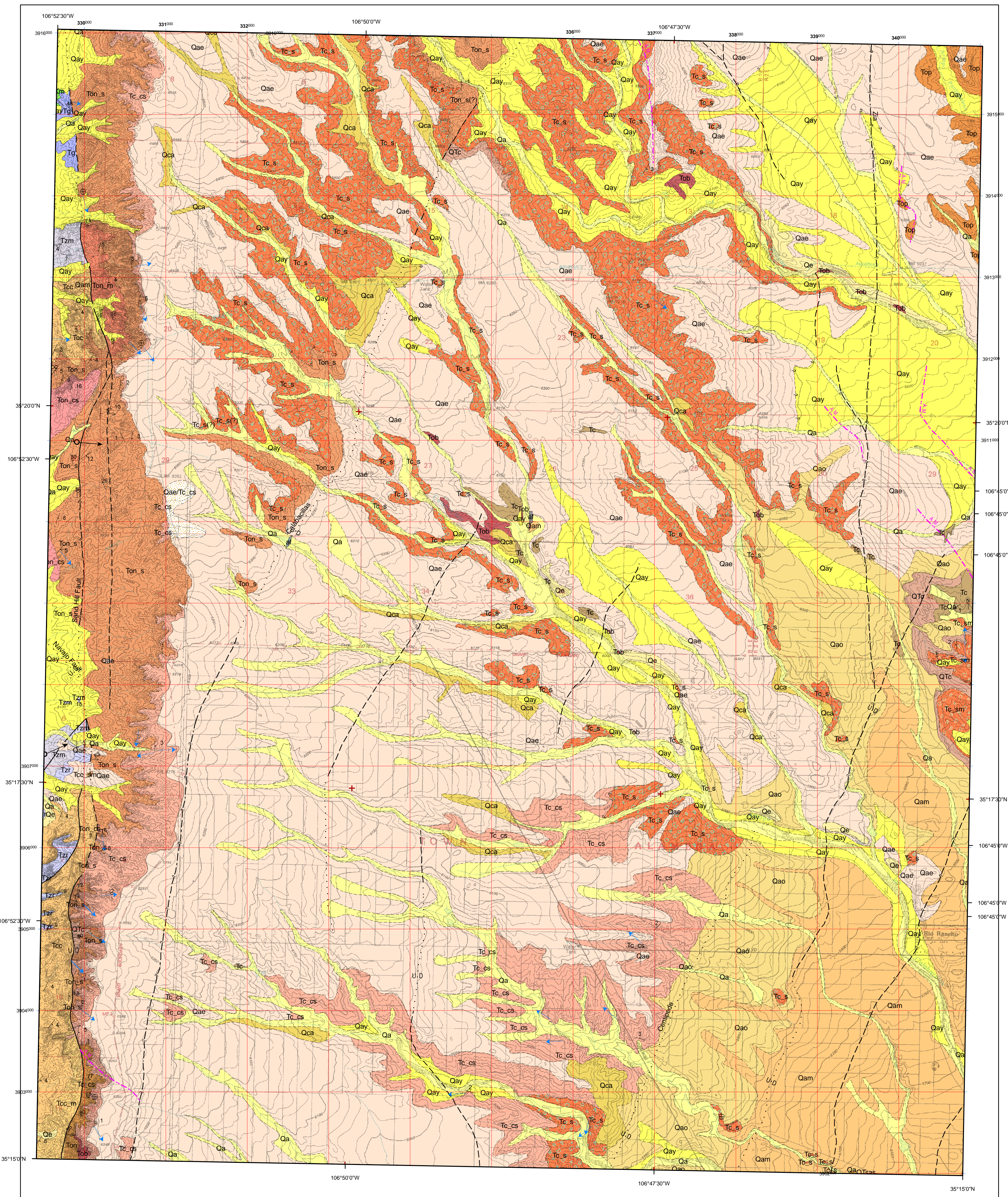
## Geo\_Point

### PlaneType, PlaneSubType

- paleocurrent, eolian
- paleocurrent, fluvial

## PlaneType, Inclination

- bedding, horizontal
- bedding, inclined

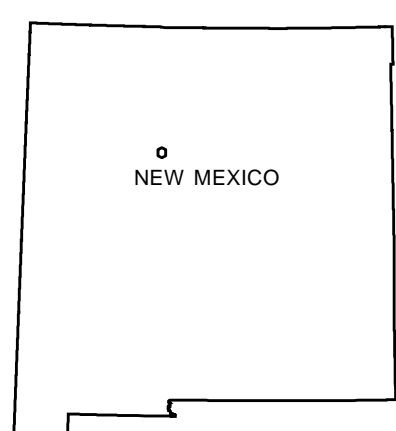
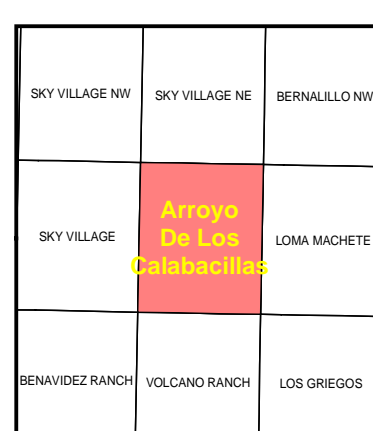


## Geologic Map of the Arroyo De Las Calabacillas 7.5-Minute Quadrangle, Sandoval County, New Mexico

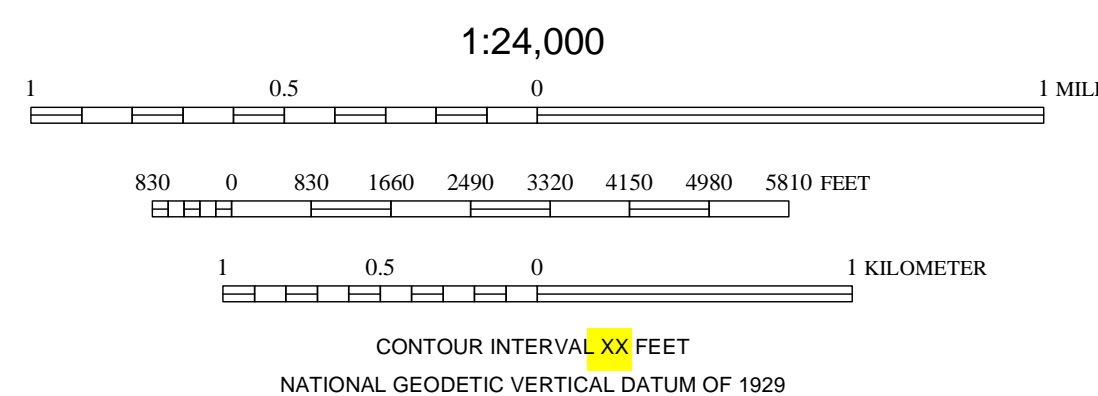
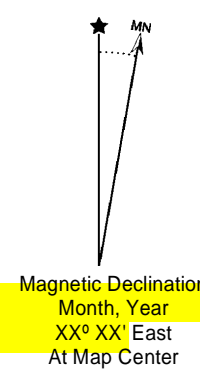
by

Cather, S. M.; Connell, S. D.; Heynekamp, M. R.; Goodwin, L. B.

Base map from U.S. Geological Survey XXXX, from photographs taken XXXX, field checked in XXXX, edited in XXXX.  
1927 North American datum, UTM projection - zone 13N  
1000-meter Universal Transverse Mercator grid, zone 13, shown in red



QUADRANGLE LOCATION



CONTOUR INTERVAL 20 FEET  
NATIONAL GEODETIC VERTICAL DATUM OF 1929