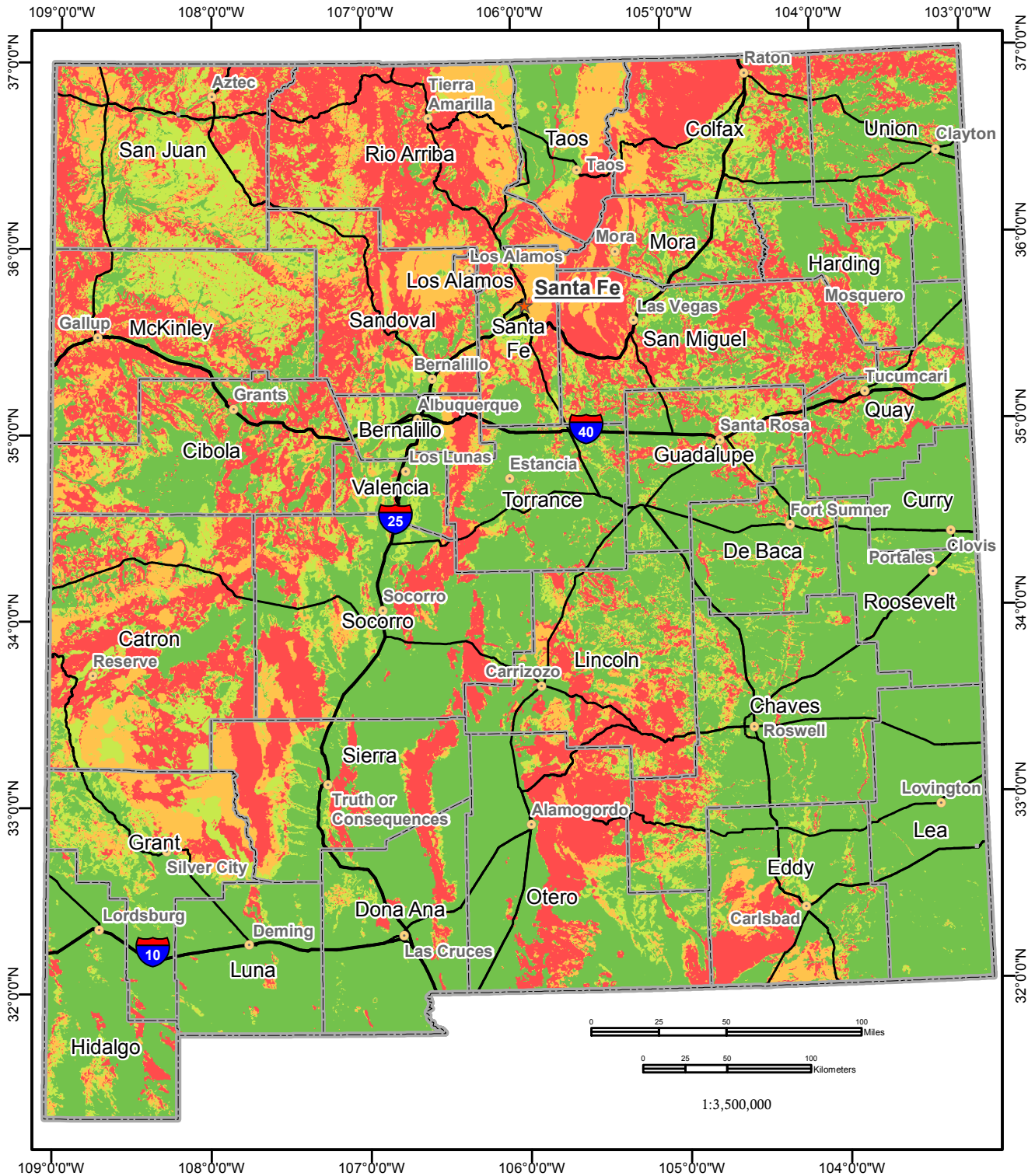


Deep-Seated Landslide Susceptibility Map



- Likely susceptible
- Moderately likely susceptible
- Potentially susceptible
- Unlikely susceptible

Regions with landscape settings comparable to those of known landslide-affected areas; these regions likely include locations that are susceptible to deep-seated landsliding.

Regions with landscape settings moderately comparable to those of known landslide-affected areas; these regions are moderately likely to include locations that are susceptible to deep-seated landsliding.

Regions with landscape settings weakly comparable to those of known landslide-affected areas; these regions may include locations that are susceptible to deep-seated landsliding.

Regions with landscape settings generally dissimilar to those of known landslide-affected areas; these regions are unlikely to include locations that are susceptible to deep-seated landsliding.

Source: Cikoski, C. T., and Koning, D. J., 2017, Deep-seated landslide susceptibility map of New Mexico: New Mexico Bureau of Geology and Mineral Resources Open-File Report OFR-594: 84 pp., 1 plate, 9 digital appendices.