

## ROCKS THAT SHAPE THE ENCHANTING LANDSCAPE

Earth wears a mantle rich with lore,  
Of storied fabric finely spun,  
That tells of kingdoms come and gone,  
Of legions lost and battles won.  
No seer no monarch can divine,  
The cryptic writings; he alone,  
Who humbly speaks the tongue of earth,  
can find a story in a stone.

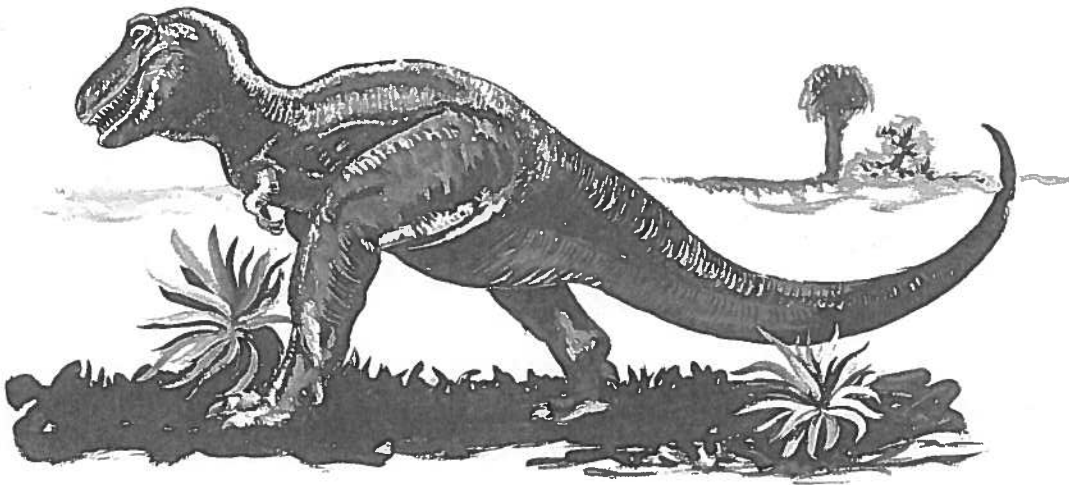


Figure 10. MAKE WAY FOR 'IS LORDSHIP, THE DINOSAUR!

from: Frank E. Kottowski, 1964, *Rocks That Shape the Enchanting Landscape*; in *Mosaic of New Mexico's Scenery, Rocks and History*, P.W. Christiansen and F.E. Kottowski (eds.), New Mexico Bureau of Mines and Mineral Resources: Scenic Trips to the Geologic Past, No.8, pp.52-53.