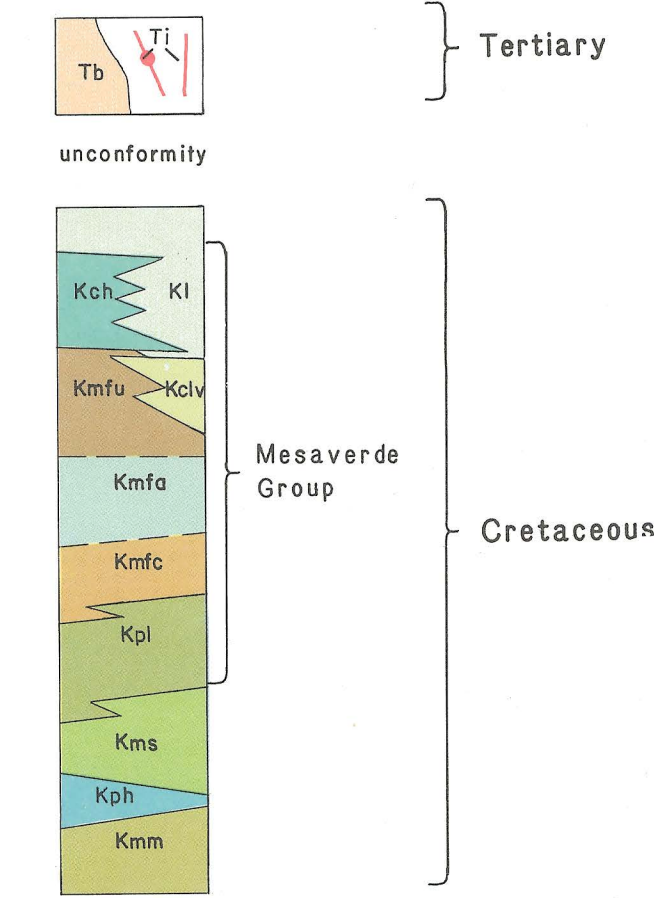
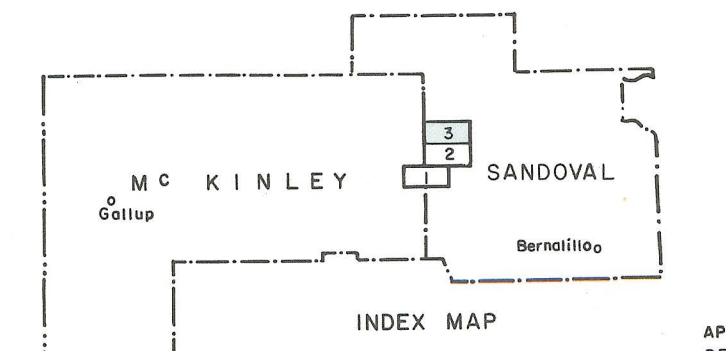


CORRELATION OF UNITS



DESCRIPTION OF MAP UNITS

- Tt Tb** Tertiary volcanics—Tb, basalt flows capping Mesa Chivato; Tt, basalt dikes and plugs related to Mt. Taylor volcanic center
- Kl** Lewis Shale—Light- to dark-gray silty shale interbedded with Cliff House Sandstone
- Kch/Kclv** Cliff House Sandstone—Gray or tan, line-grained, even-bedded to crossbedded sandstone. Main body of Cliff House, Kch, dies out rapidly to northeast as lower La Ventana Tongue, Kclv, appears; La Ventana consists of several tongues.
- Kmfu** Menefee Formation—Kmfu, upper coal-bearing member, inter-tongues with La Ventana Tongue of Cliff House; Kmfa, Allison Member, predominantly fine to medium crossbedded sandstone and tan to light-gray shale; Kmfc, Cleary Member, gray to dark-brown carbonaceous shale, tan sandstone, and coal
- Kpl/Kph** Point Lookout Sandstone—Tan to brown, line-grained, even-bedded to crossbedded sandstone; interbedded with shale near base. The Hosta Tongue, Kph, is separated from the main body of the Point Lookout Sandstone, Kpl, by the Satan Tongue of the Mancos Shale
- Kms** Mancos Shale—Light- to dark-gray silty shale with a few thin sandstone or limestone beds or limestone concretions. The Satan Tongue, Kms, is separated from the Mulatto Tongue, Kmm, by the Hosta Tongue of the Point Lookout Sandstone
- ↖** Strike and dip of beds
- ↔** Axis of trough crossbedding
- 4.0** Coal bed, dashed where approximate, dotted where inferred (measurement in ft)
- ⚡** Coal mine or prospect
- ⤴** Burned coal bed
- |—** Fault, dashed where approximate or concealed (ball on downthrown side)
- - -** Contact, dashed where approximate
- ⊙** Well



Scale 1:24,000 0 1 mi 0 1 km Contour interval 20ft.

Coal geology of Torreon Wash area, southeast San Juan Basin, New Mexico

by D.E. Tabet and S.J. Frost, 1979

Geology by David E. Tabet and Stephen J. Frost 1977-78