



Geology of Chise quadrangle, Sierra County, New Mexico

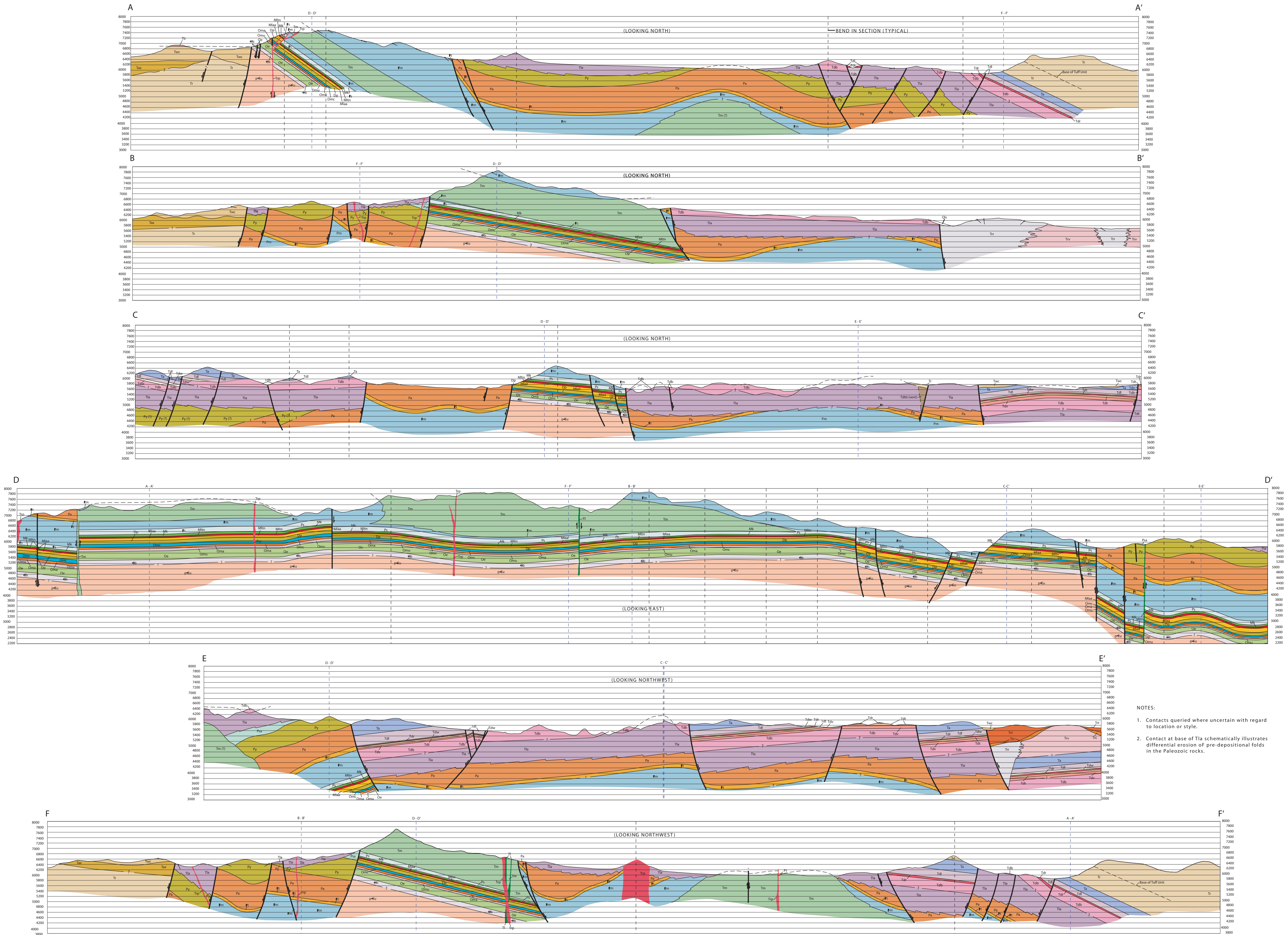
December 2005

by

Richard H. Jahns, Kent McMillan, and James D. O'Brien

Computer graphics
Jessica Czajkowski

Geologic Cross Sections



- NOTES:
1. Contacts queried where uncertain with regard to location or style.
 2. Contact at base of Tla schematically illustrates differential erosion of pre-depositional folds in the Paleozoic rocks.