

FIGURE 4—GEOLOGIC MAP OF PRECAMBRIAN ROCKS IN THE PEDERAL HILLS, TORRANCE COUNTY (after Fallis, 1958, and Gonzalez, 1968).

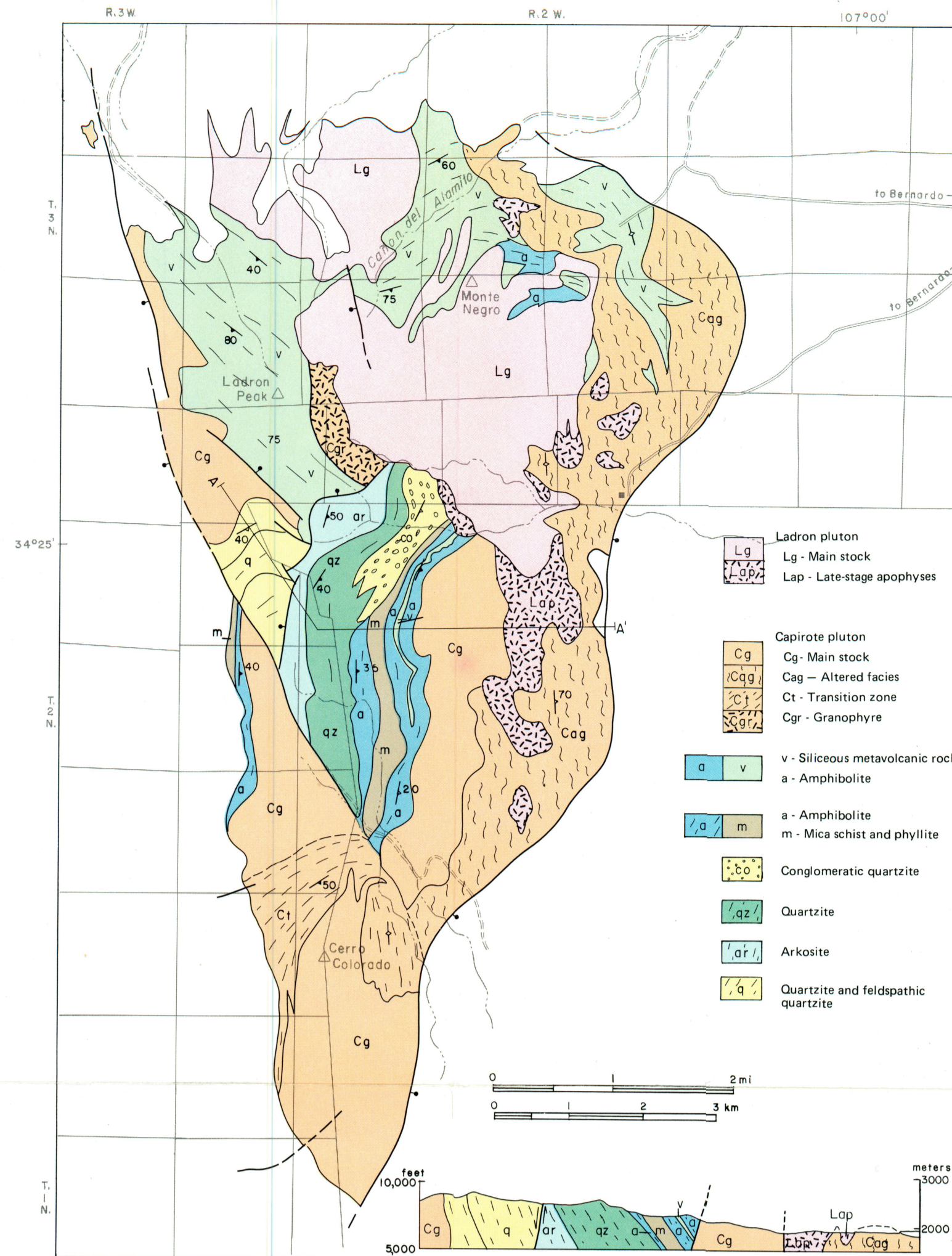


FIGURE 5—GEOLOGIC MAP OF PRECAMBRIAN ROCKS IN THE LADRON MOUNTAINS, SOCORRO COUNTY (after Noble, 1950; Black, 1964; Haederle, 1966; and Condie, 1976a).

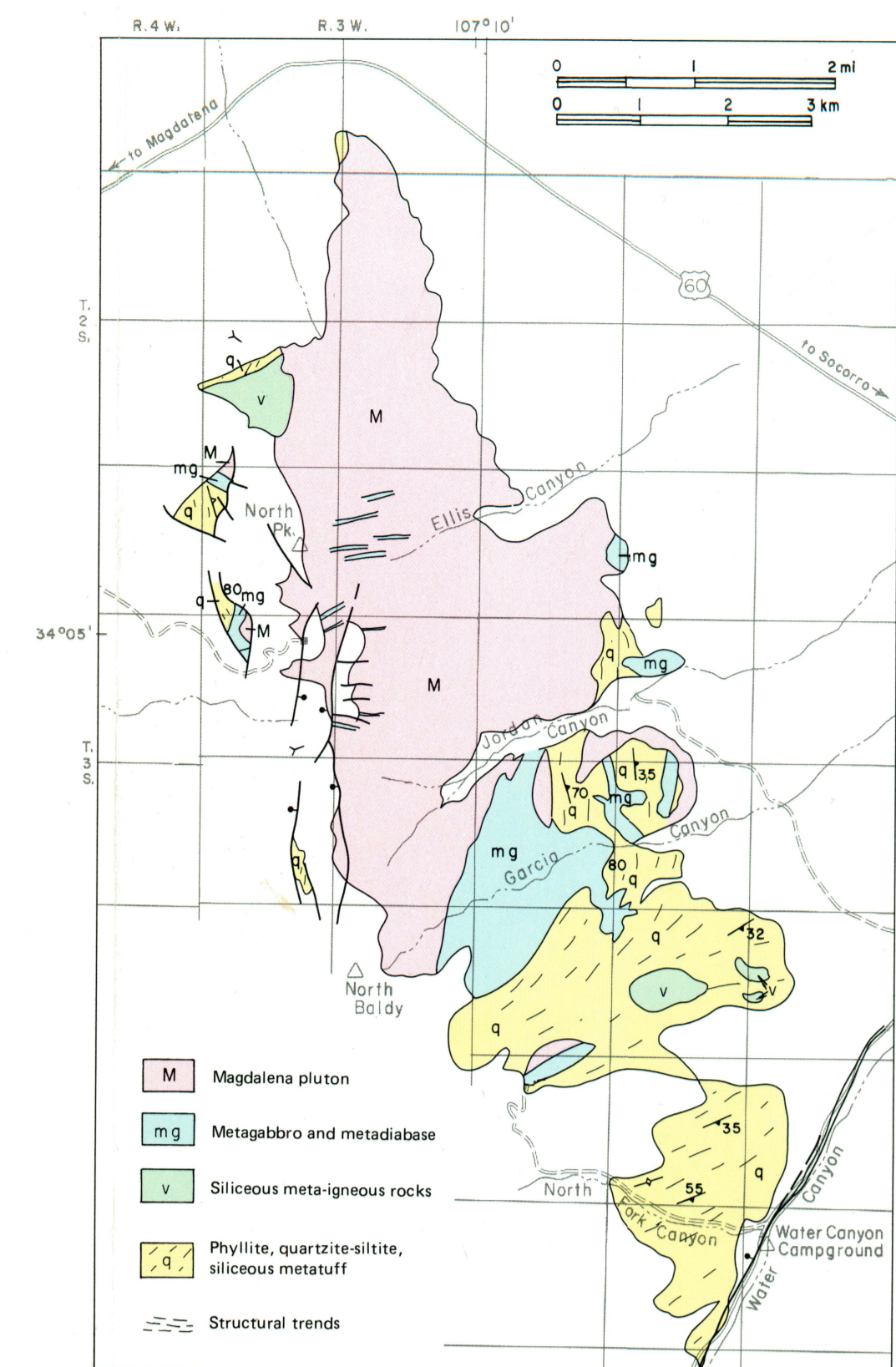


FIGURE 6—GEOLOGIC MAP OF PRECAMBRIAN ROCKS IN THE MAGDALENA MOUNTAINS, SOCORRO COUNTY (after Loughlin and Koschmann, 1942; Kalish, 1953; Krewel, 1974; Blakestad, 1976; mapping for this report by Budding).

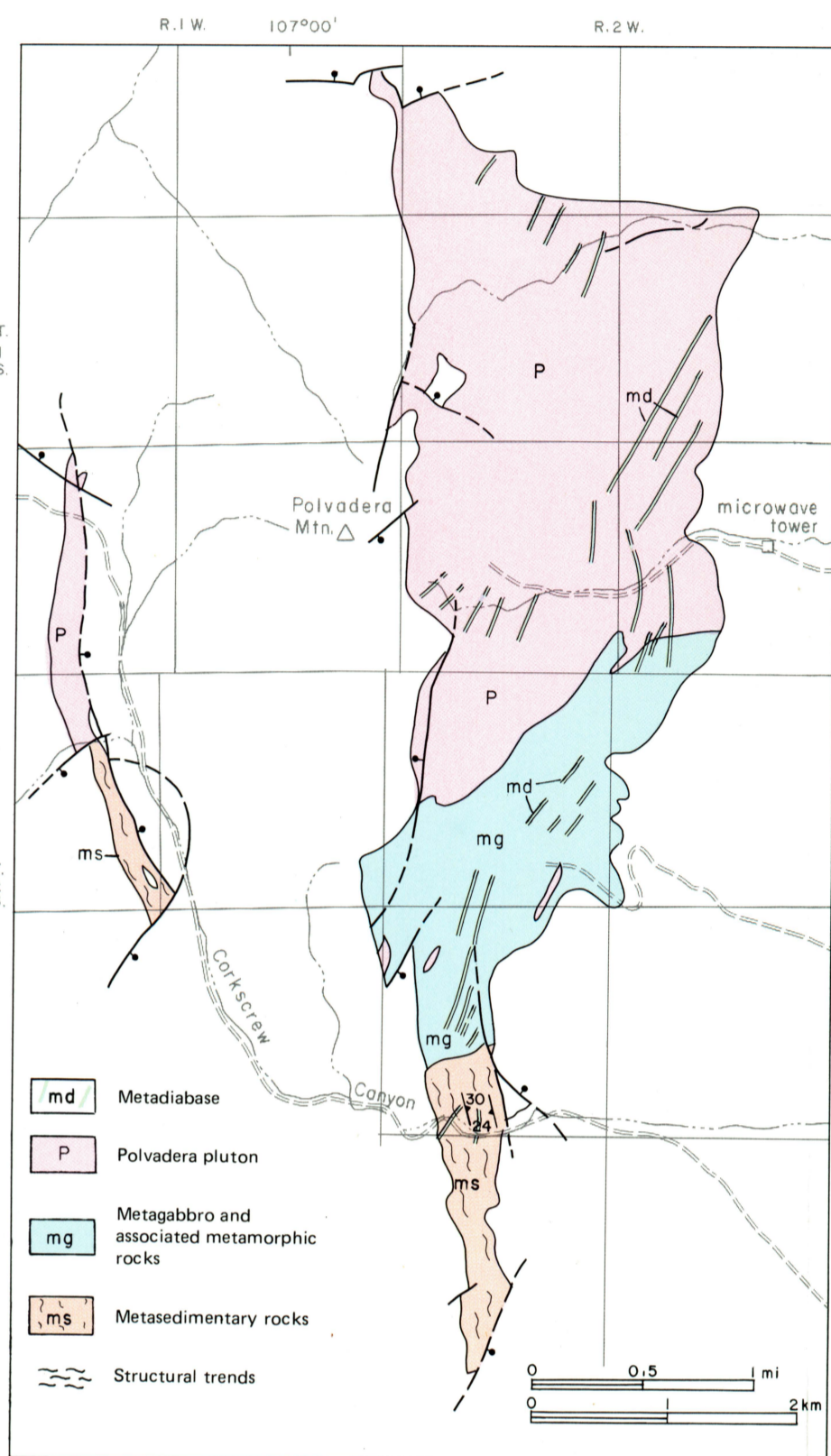


FIGURE 7—GEOLOGIC MAP OF PRECAMBRIAN ROCKS IN THE LEMITAR MOUNTAINS, SOCORRO COUNTY (after Woodward, 1973, and Chamberlin, in preparation).

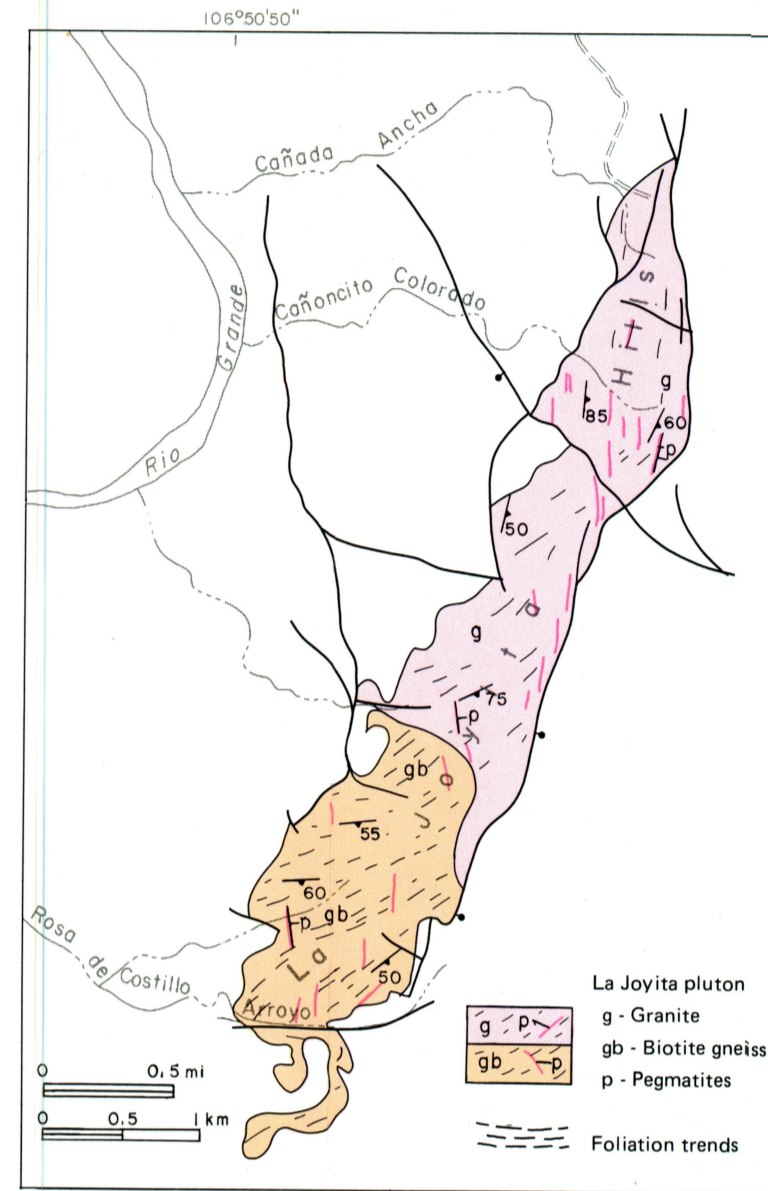


FIGURE 8—GEOLOGIC MAP OF PRECAMBRIAN ROCKS IN THE LA JOYITA HILLS, SOCORRO COUNTY (after Herber, 1963a, b, and Arendt, 1971).

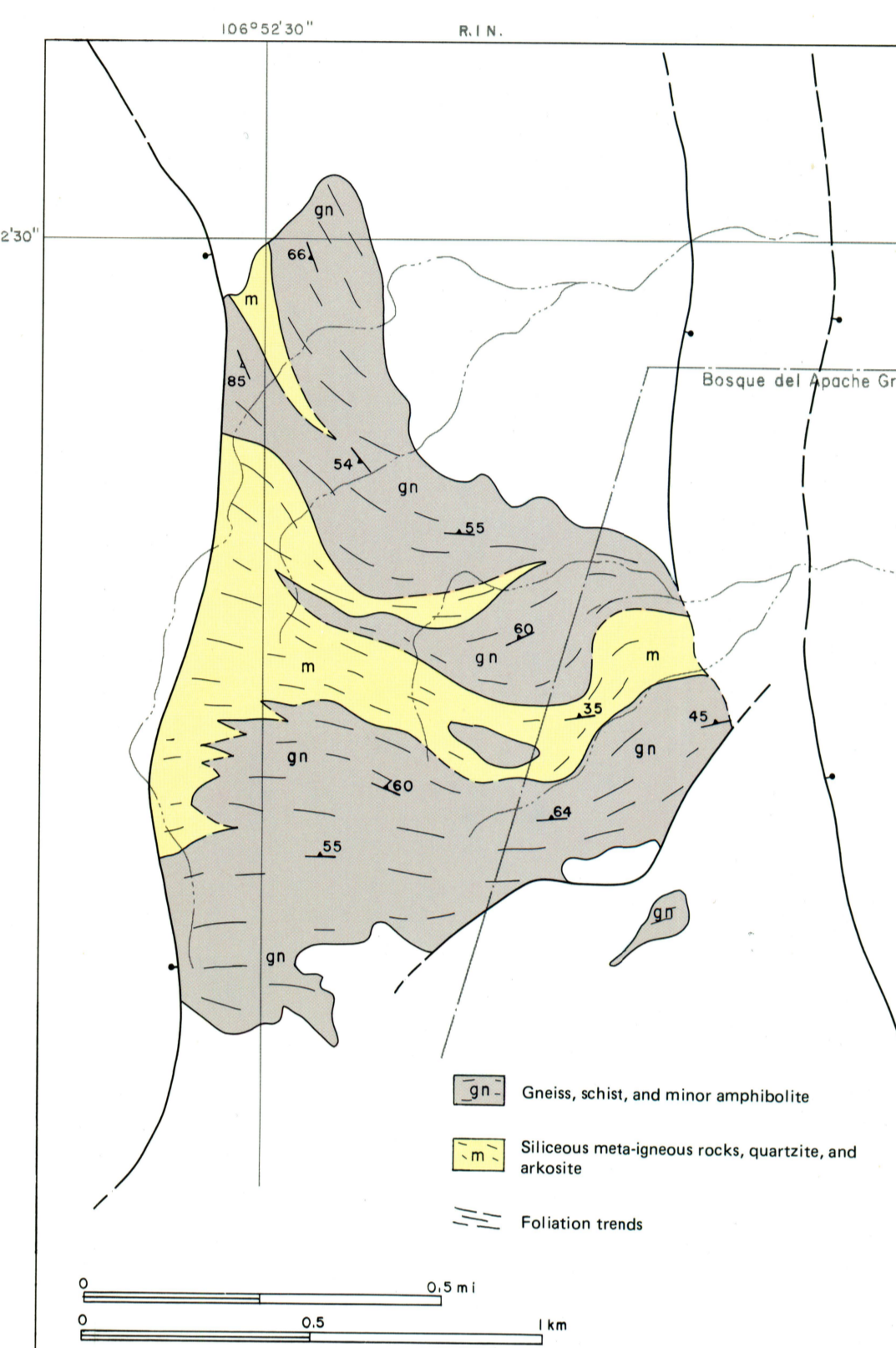


FIGURE 9—GEOLOGIC MAP OF PRECAMBRIAN ROCKS IN THE COYOTE HILLS, SOCORRO COUNTY (modified after Kottowski, 1960; mapping for this report by Condie and Budding).

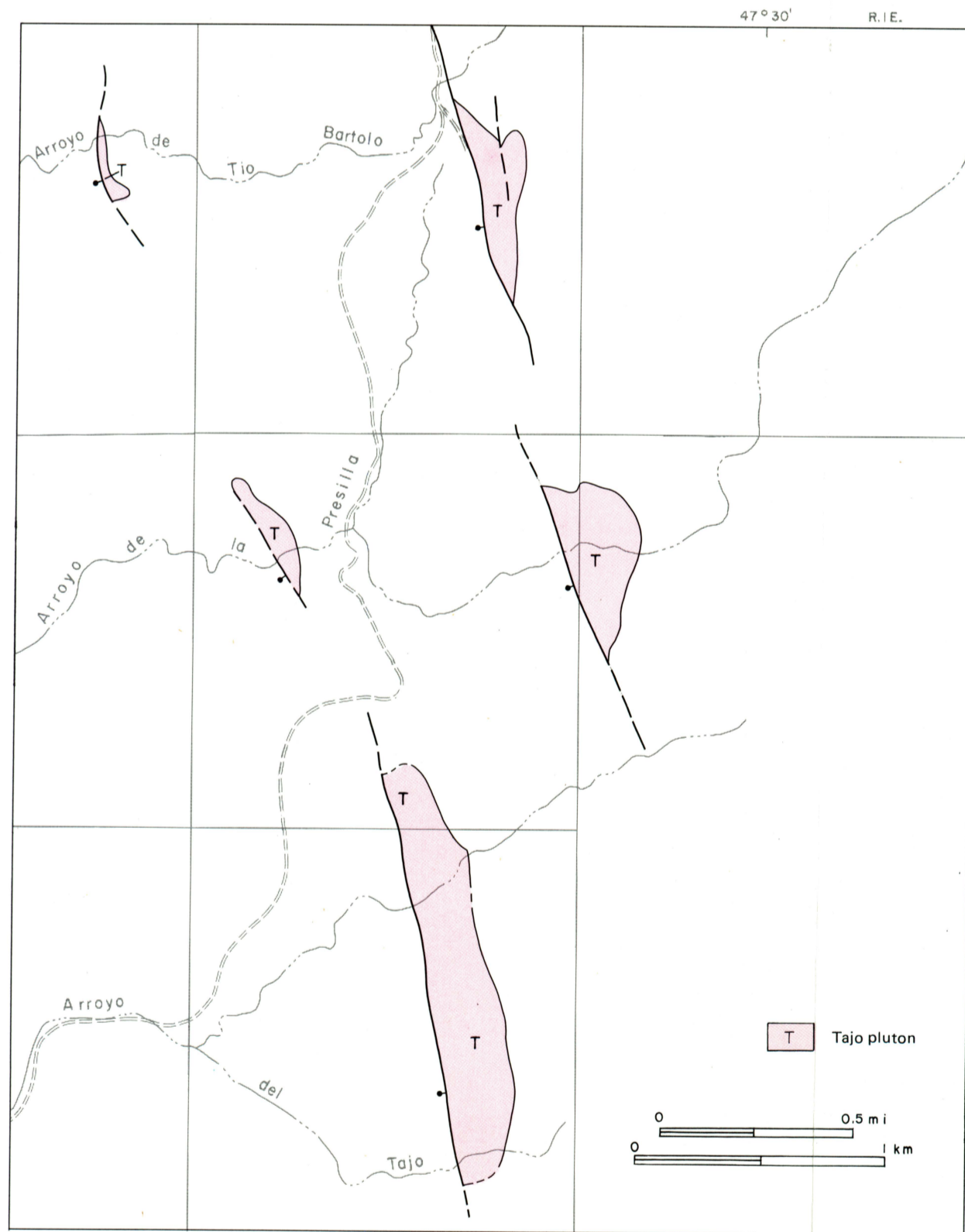


FIGURE 10—GEOLOGIC MAP OF PRECAMBRIAN ROCKS EAST OF SOCORRO, SOCORRO COUNTY (mapping for this report by C. T. Smith and Condie).

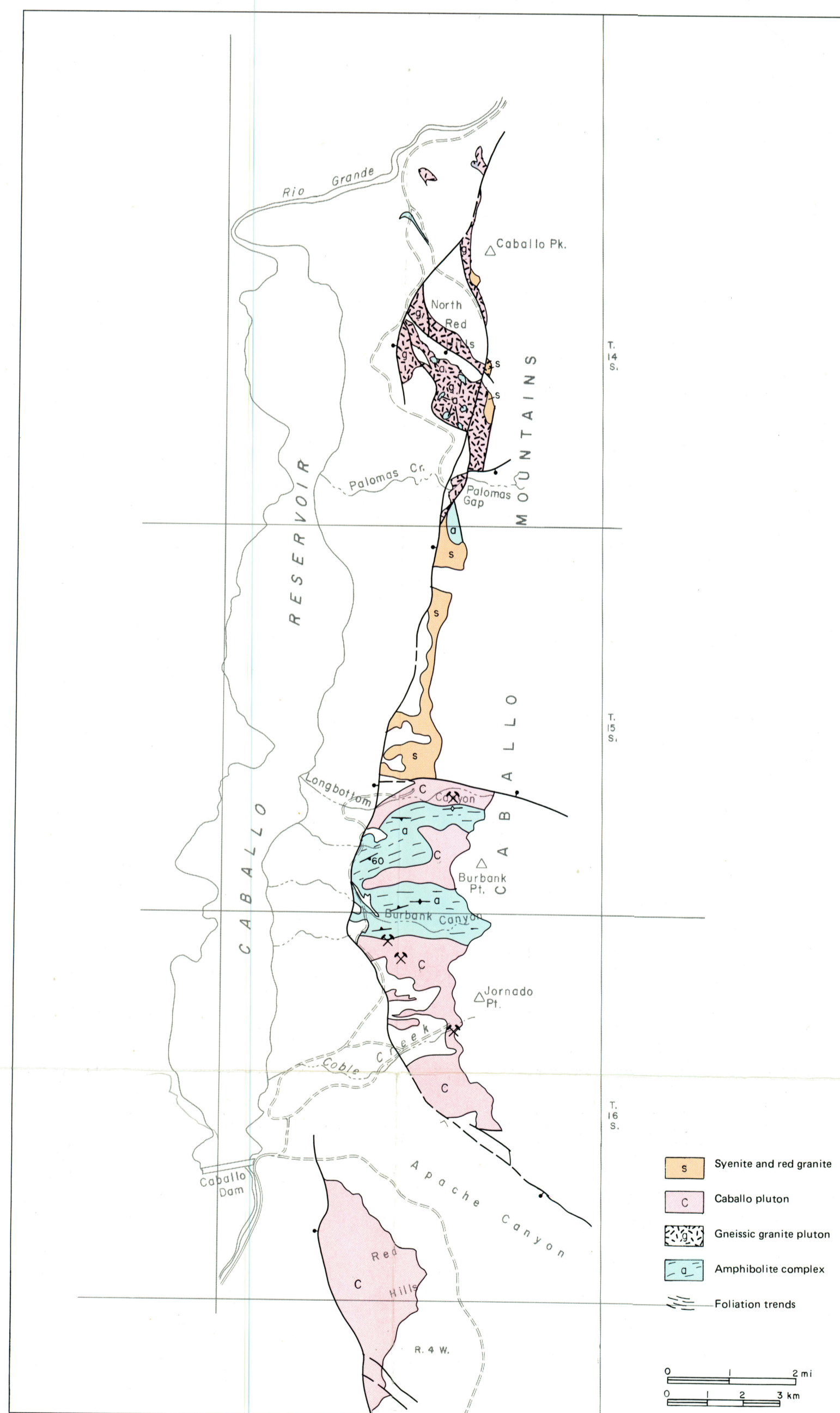


FIGURE 11—GEOLOGIC MAP OF PRECAMBRIAN ROCKS IN THE CABALLO MOUNTAINS AND RED HILLS, SIERRA COUNTY (after Doyle, 1951; Kelley and Silver, 1952; Mason, 1976; mapping for this report by Condie and Budding).

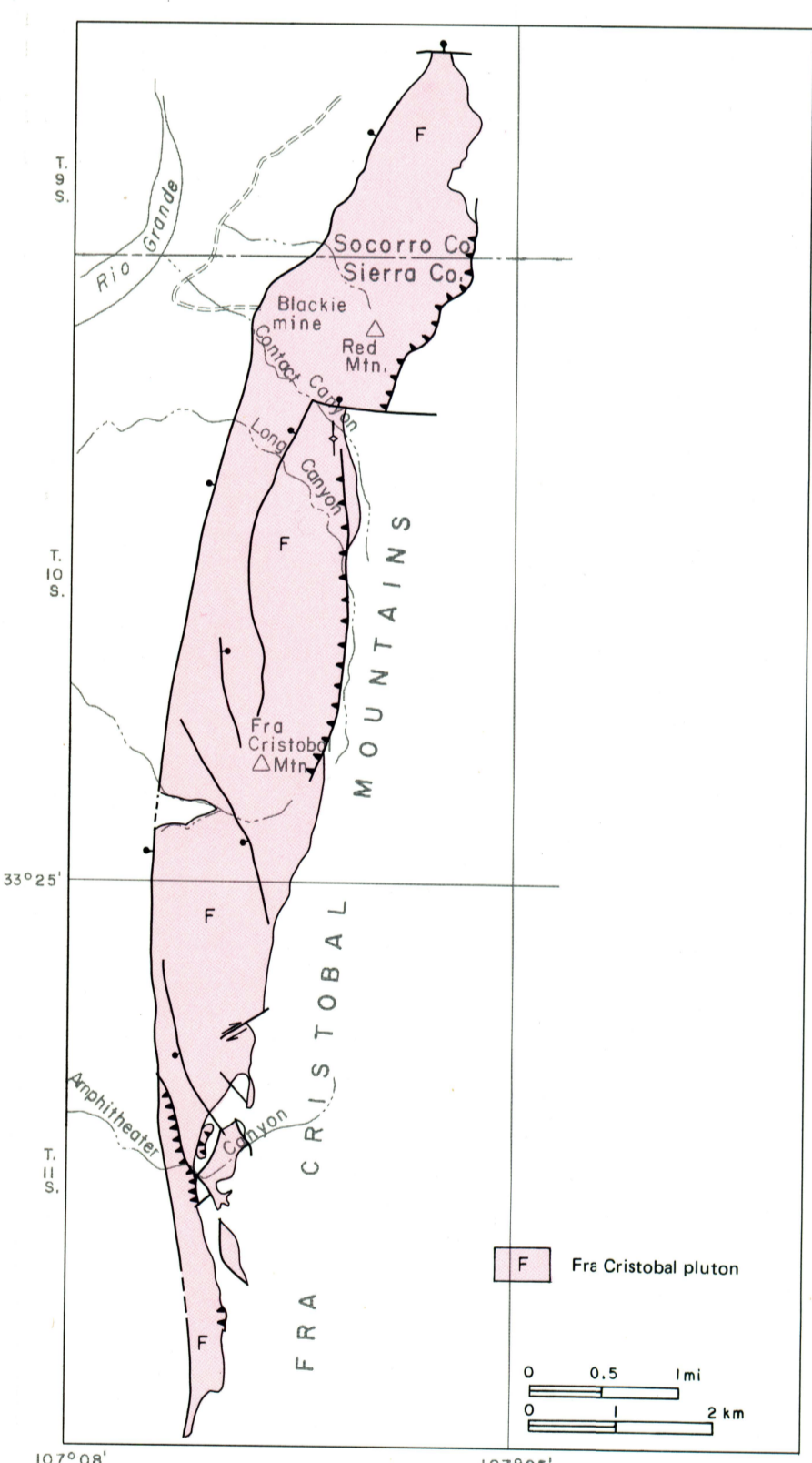


FIGURE 12—GEOLOGIC MAP OF PRECAMBRIAN ROCKS IN THE FRA CRISTOBAL MOUNTAINS, SIERRA AND SOCORRO COUNTIES (after Cerna, 1956; Jacobs, 1956; McCleary, 1960; mapping for this report by Condie and Budding).

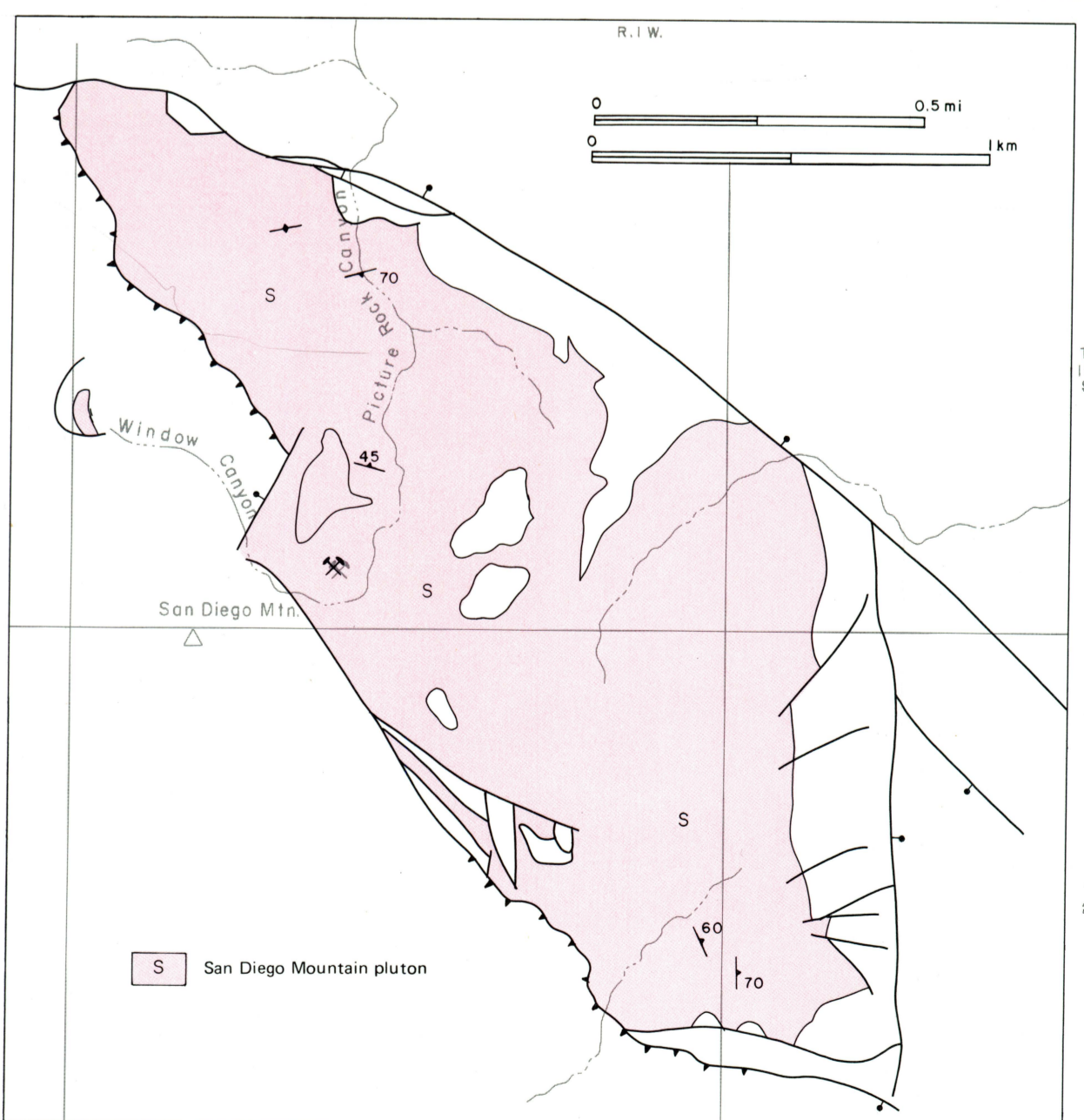


FIGURE 13—GEOLOGIC MAP OF PRECAMBRIAN ROCKS IN THE SAN DIEGO MOUNTAIN AREA, DOÑA ANA COUNTY (after Seager and others, 1971).

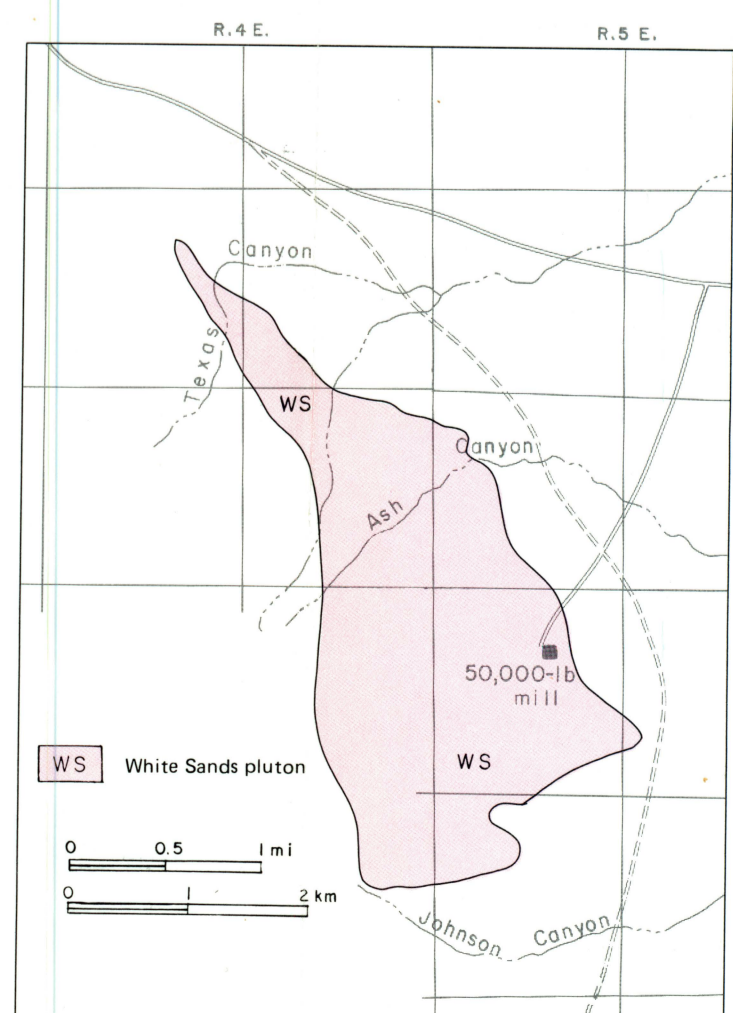


FIGURE 17—GEOLOGIC MAP OF PRECAMBRIAN ROCKS IN THE NORTHEASTERN ORGAN MOUNTAINS, DOÑA ANA COUNTY (mapping for this report by Condie and Budding).

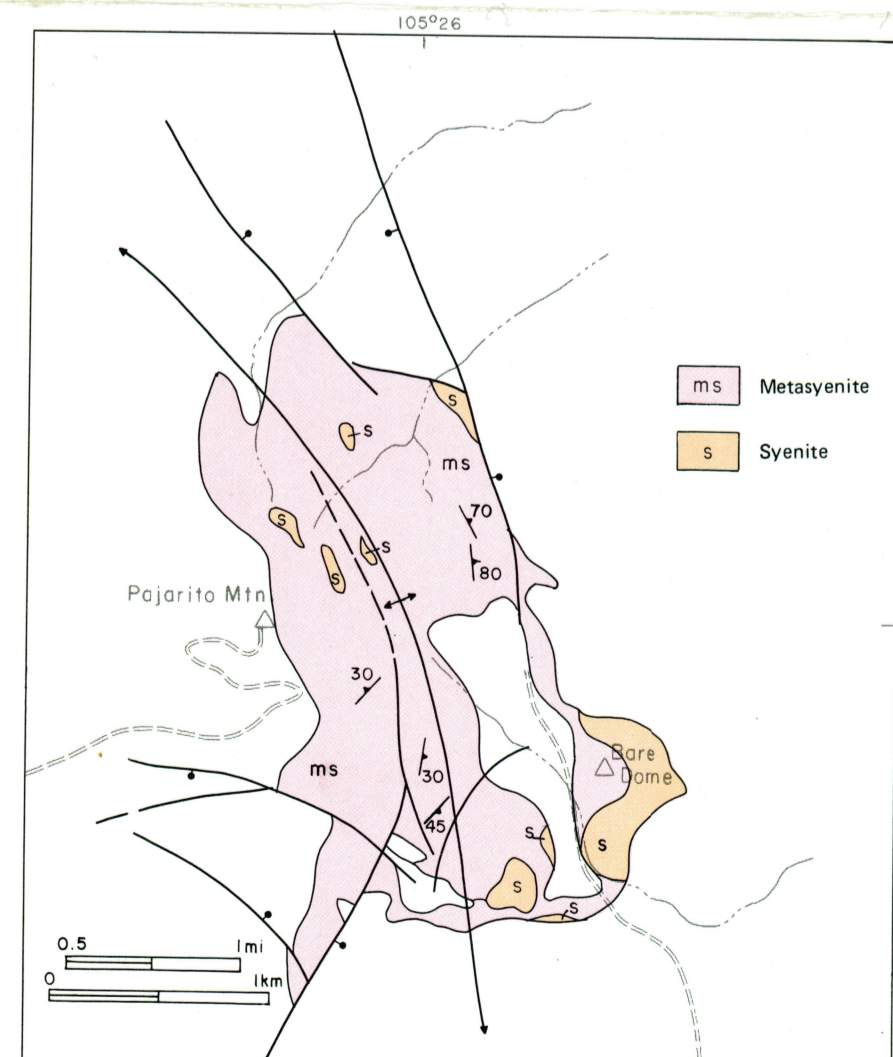


FIGURE 18—GEOLOGIC MAP OF PRECAMBRIAN ROCKS AT PAJARITO MOUNTAIN, OTERO COUNTY (after Kelley, 1968).