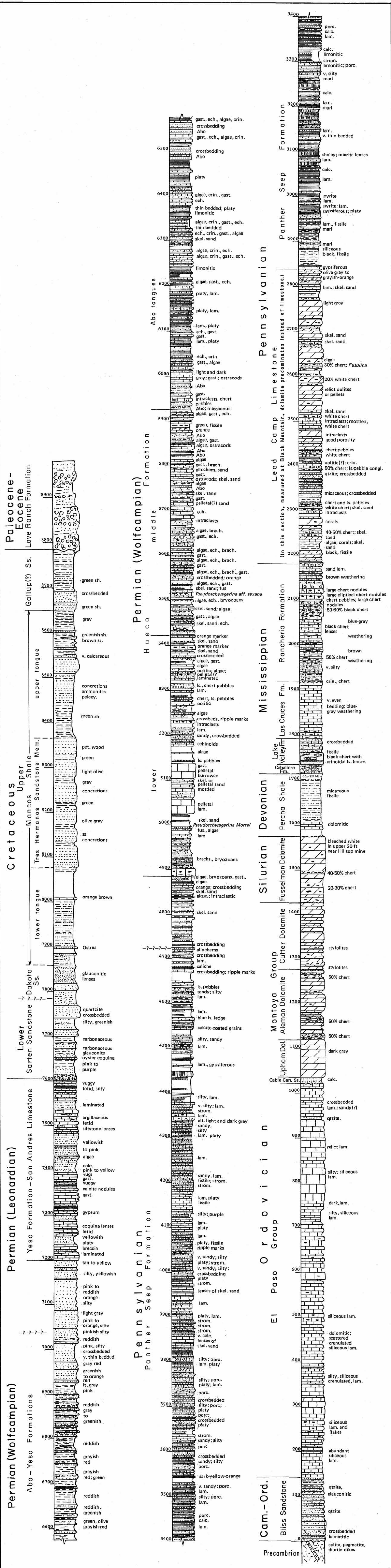


FIGURE 29—Columnar section of Wolfcampian Hueco Formation, west-central Organ Mountains, New Mexico (by Richard E. Kelley).

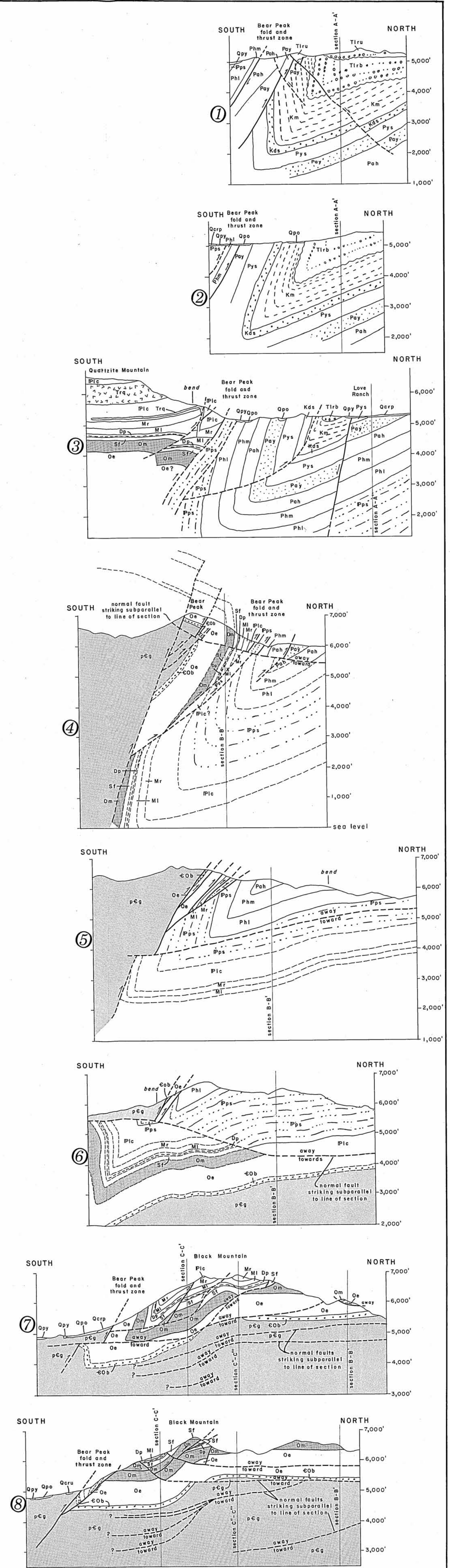
SYMBOLS	ABBREVIATIONS
	abund. — abundant
	alt. — alternating
	brach. — brachiopods
	bryoz. — bryozoans
	calc. — calcareous
	crin. — crinoids
	cryst. — crystalline
	ech. — echinoids
	frag. — fragments
	fus. — fusulinids
	gast. — gastropods
	lam. — laminated
	ls. — limestone
	lt. — light
	pel. — pelocypods
	porc. — porcellanitic
	qtz. — quartz
	qtzite. — quartzite
	sh. — shale
	skel. — skeletal
	ss. — sandstone
	strom. — stromatolites
	v. — very

Figures on left side of columns are in feet



Composite columnar section of Paleozoic and Mesozoic rocks in Organ and southern San Andres Mountains, New Mexico.

Columnar sections and short cross sections for
Memor 36
Geology of Organ Mountains and southern San Andres Mountains, New Mexico
 by William R. Seager
 1980



Geologic cross sections 1-8 along Bear Peak fold and thrust zone intersecting sections A-A' thru C-C' in north part of sheet 1 (no vertical exaggeration).