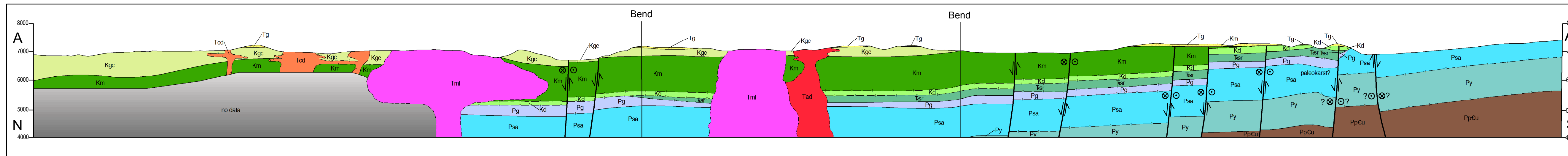
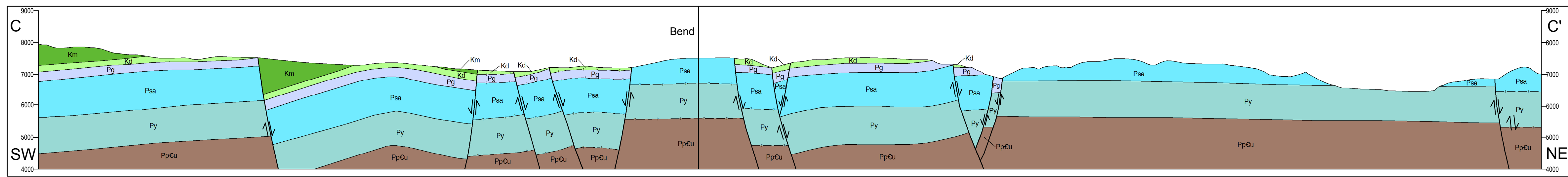


Geology of the Ruidoso Area, Lincoln and Otero Counties, New Mexico - Cross Sections

by Geoffrey Rawling
Open-file Report 507
Revised February 2014

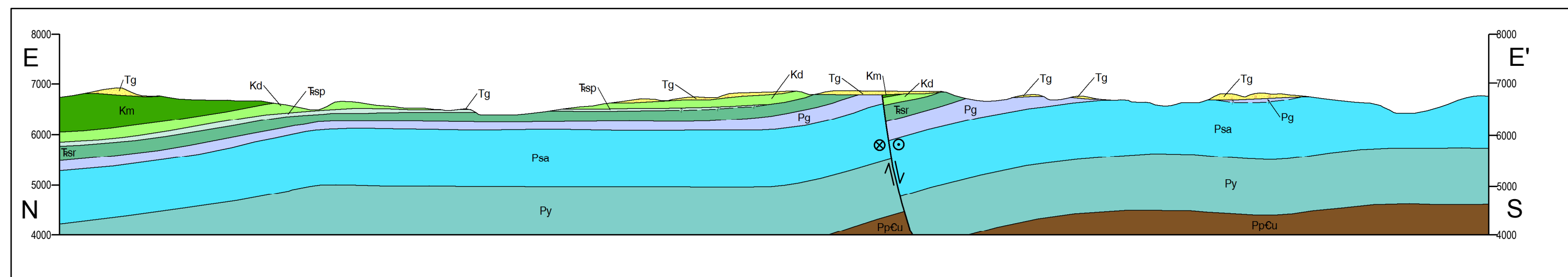


Fort Stanton section A-A'



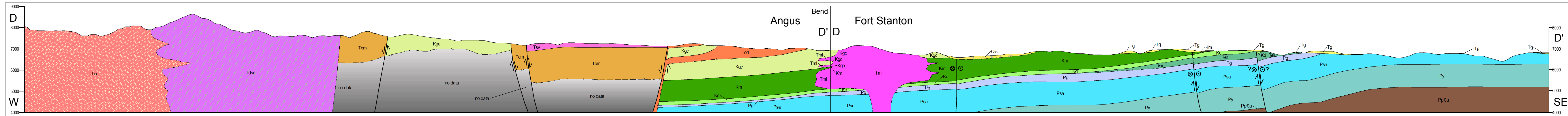
Ruidoso section C-C'

All sections 1:24000
1" = 2000 feet
no vertical exaggeration
vertical scale in feet above sea level

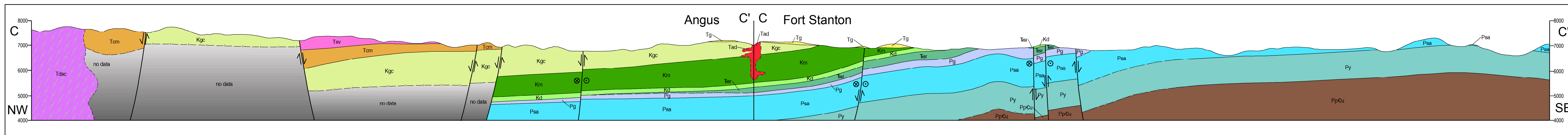


Fort Stanton section E-E'

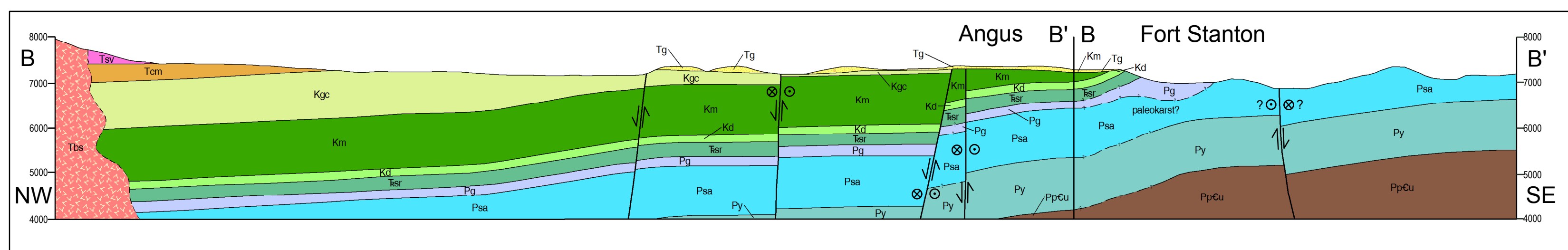
- ↗ dip-slip motion
- ⊙ strike-slip motion towards, queried where uncertain
- ⊗ strike-slip motion away, queried where uncertain



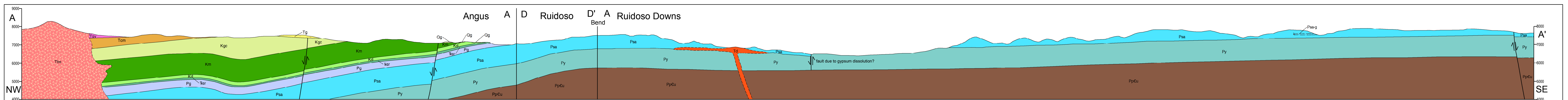
Angus section D-D' -
Fort Stanton section D-D'



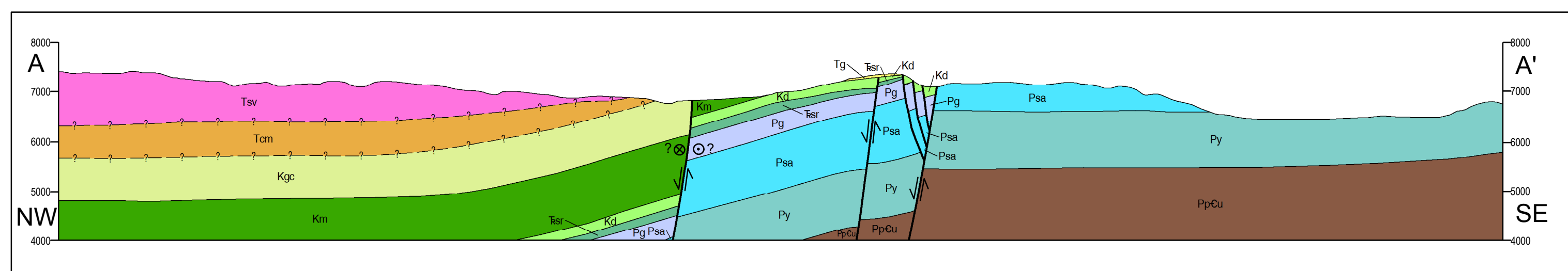
Angus section C-C' -
Fort Stanton section C-C'



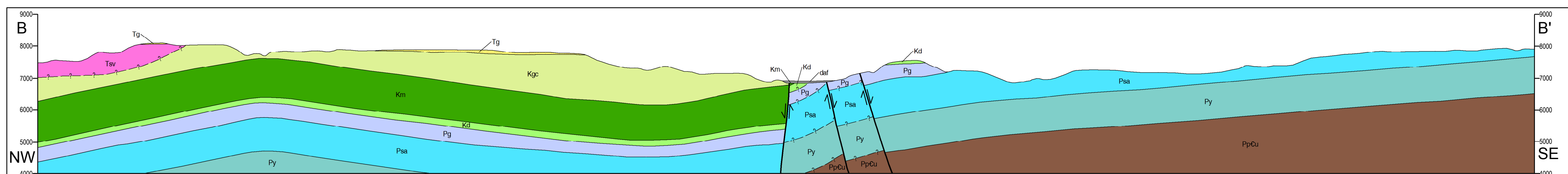
Angus section B-B' -
Fort Stanton section B-B'



Angus section A-A' - Ruidoso section D-D' - Ruidoso Downs section A-A'



Ruidoso section A-A'



Ruidoso section B-B'