



**JET WEST**  
 GEOPHYSICAL SERVICES, LLC.

COMPANY: San Agustín Ranch  
 WELL ID: San Agustín Ranch Test Well No. 2-POD 40  
 FIELD: San Agustín Ranch  
 COUNTY: Catron STATE: New Mexico  
 TYPE OF LOG: Electric Log Gamma Ray  
 OTHER SERVICES: Neutron, Sonic, Temperature, 2.5m Caliper, Deviation, Zenith No.

State Plane 1927  
 Northing: 3413 29 8  
 Easting: 107 43 13

PERMANENT DATUM: GROUND LEVEL  
 ELEVATION: K.B.  
 LOG MEAS. FROM: Ground Level ABOVE PERM. DATUM  
 T.O.C.:

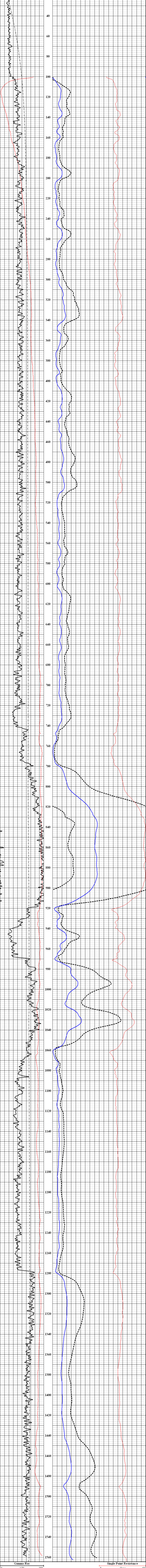
DRILLING MEAS. FROM: Ground Level  
 DATE: Summer 6, 2009  
 TYPE PLUM. IN HOLE: Vertical  
 TYPING: SRS/OPY

DEPTH: 156.4  
 DEPTH INTERVAL: 156.4  
 E.M. LOGGED INTERVAL: 156.4  
 LOGGED INTERVAL: 156.4  
 OPERATING BIT TIME: 156.4  
 RECORDING BIT TIME: 156.4

WITNESSED BY: J. Smith  
 RIN: BIRCHOLE RECORD  
 NO. BIT: 1  
 SIZE: 30 mm  
 WT: 4.44 lb  
 FROM: 0.0 ft  
 TO: 99.9 ft

REMARKS:  
 1 17.12 m 0.7 A  
 2 16 m 0.7 A  
 3

DEPTH	156.4	MAX. SEC. DEPT.	156.4	DEPTH INTERVAL	0.2 A
PERMANENT DATUM	GROUND LEVEL	ELEVATION	K.B.	LOG MEAS. FROM	GROUND LEVEL
LOG MEAS. FROM	GROUND LEVEL	ABOVE PERM. DATUM	T.O.C.		
DRILLING MEAS. FROM	GROUND LEVEL	DATE	SUMMER 6, 2009	TYPE PLUM. IN HOLE	VERTICAL
TYPING	SRS/OPY				
DEPTH	156.4	DEPTH INTERVAL	156.4	E.M. LOGGED INTERVAL	156.4
LOGGED INTERVAL	156.4	OPERATING BIT TIME	156.4	RECORDING BIT TIME	156.4
WITNESSED BY	J. Smith	RIN	BIRCHOLE RECORD	NO. BIT	1
SIZE	30 mm	WT	4.44 lb	FROM	0.0 ft
TO	99.9 ft				
REMARKS					
	1 17.12 m 0.7 A				
	2 16 m 0.7 A				
	3				







COMPANY San Agustin Ranch  
 WELL ID San Agustin Ranch Test Well No. 2-POD 40  
 FIELD San Agustin Ranch  
 COUNTY Catron STATE New Mexico  
 TYPE OF LOG: Deviation Survey  
 LOCATION OTHER SERVICES  
 Newton  
 Sonic  
 Temperature  
 3 Arm Caliper  
 Elong  
 Permit No.

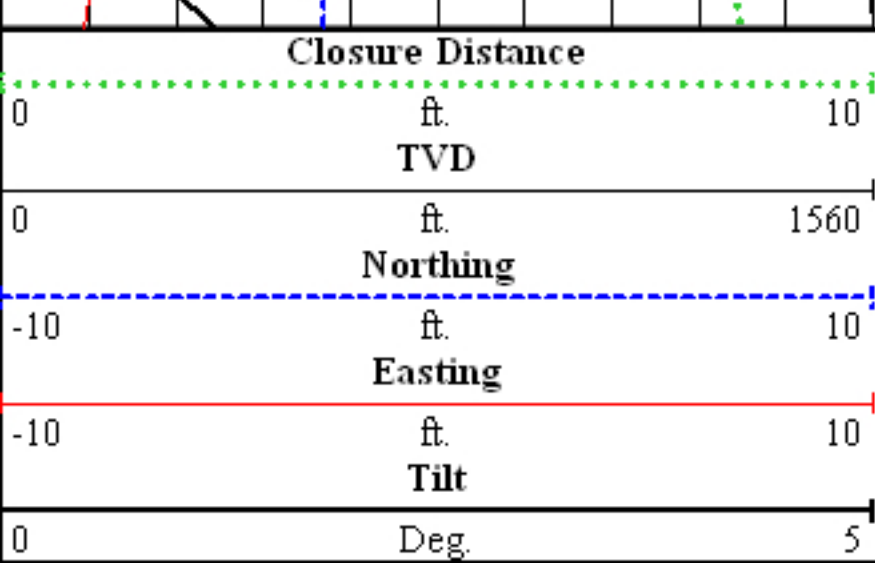
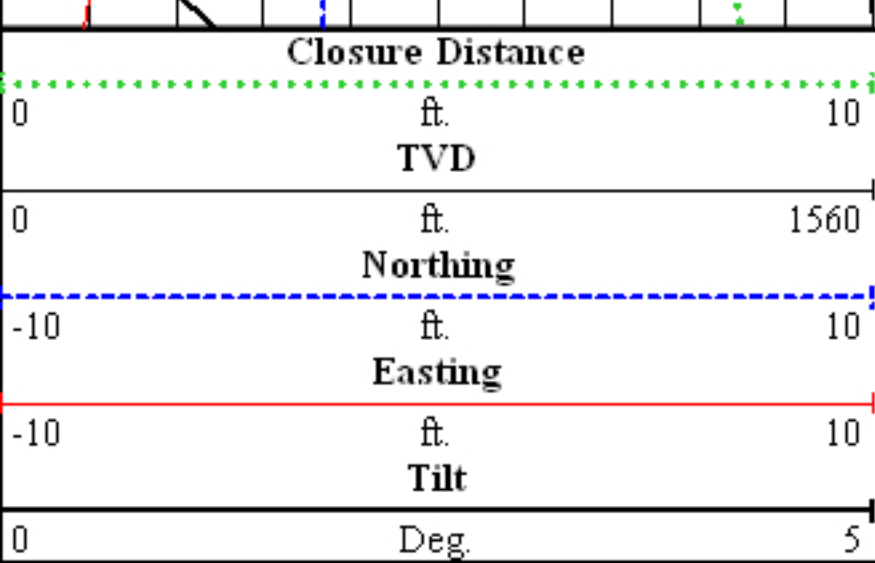
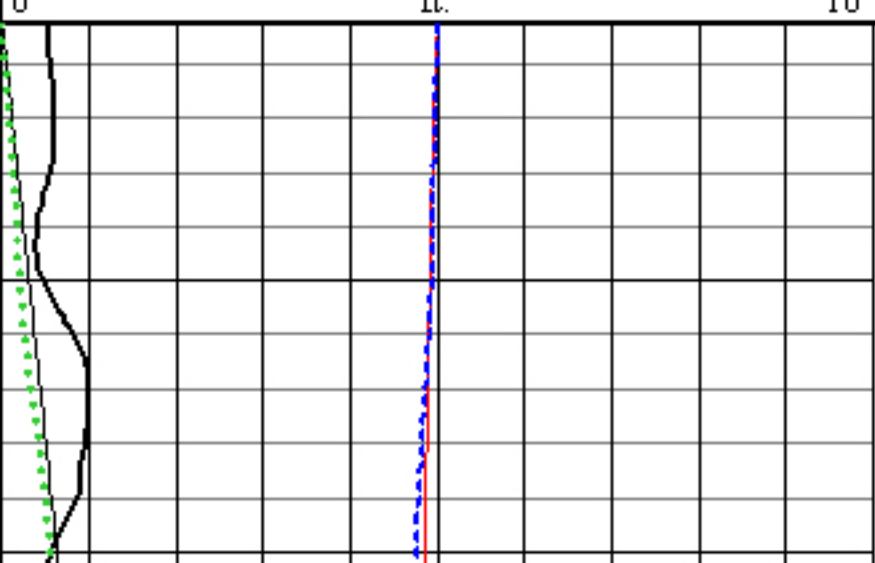
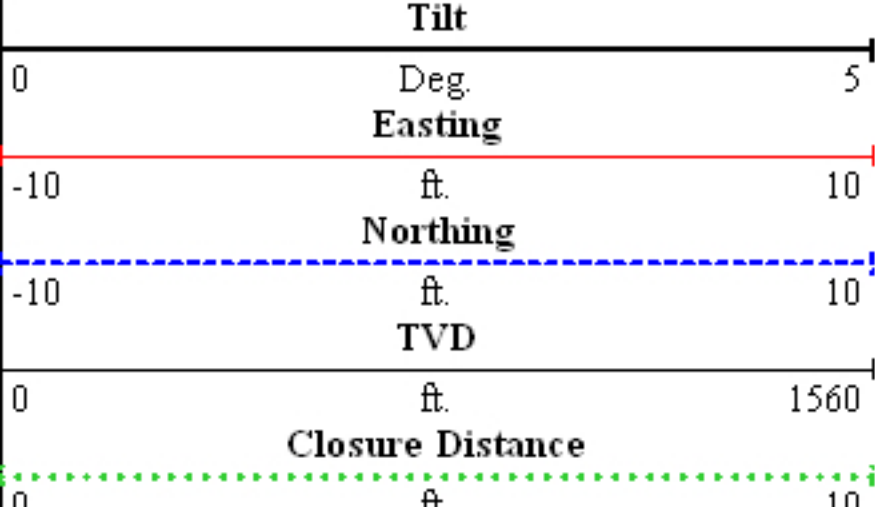
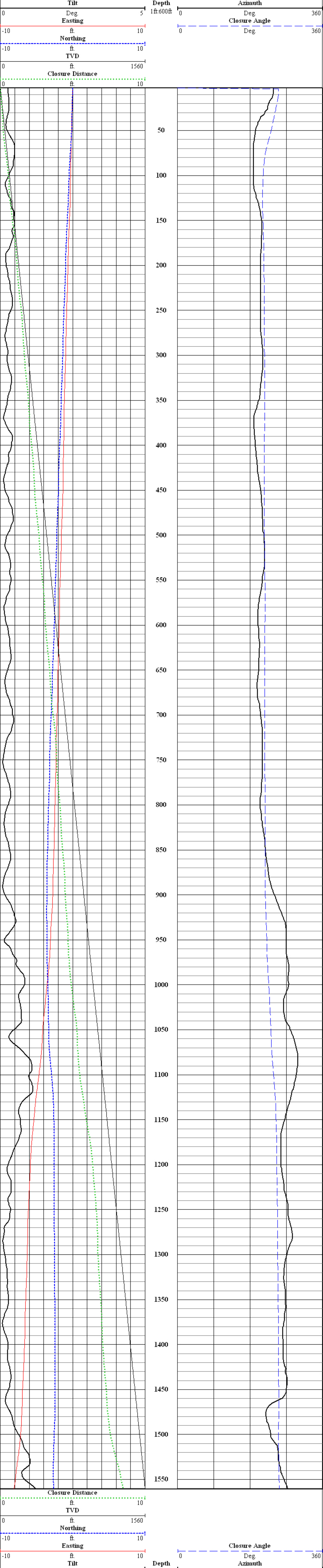
State Plane 1927  
 Northing: 34 13' 29.8"  
 Easting: 107 43' 13"

PERMANENT DATUM GROUND LEVEL ELEVATION K.B.  
 LOG MEAS FROM GROUND LEVEL ABOVE PERM. DATUM T.O.C.

DRILLING MEAS. FROM Ground Level G.L.  
 DATE September 6, 2009  
 RUN No three  
 TYPE LOG SALINITY  
 DEPTH/DRILLER 2dbr DENSITY  
 DEPTH/LOGGER 1565 ft. LEVEL Full  
 BITMAPPED INTERVAL 1564 ft. MAX REC. TEMP.  
 TOP LOGGED INTERVAL 1564 ft. DIGITIZING INTERVAL 1.0 ft.  
 OPERATING RIG TIME Surface  
 RECORDED BY A. Henderson  
 WITNESSED BY J. Street

BOREHOLE RECORD		CASING RECORD		TO	
NO.	BIT FROM	TO	SIZE	WGT.	FROM
1	17-1/2 in	0 ft	30 in	steel	0 ft
2	16 in	827 ft	827 ft		99 ft
3		1565 ft			

REMARKS:





COMPANY: San Agustín Ranch  
 WELL ID: San Agustín Ranch Test Well No 2-POD 40  
 FIELD: San Agustín Ranch  
 COUNTY: Catron STATE: New Mexico

State Plane 1927  
 Northing: 3413 29 8  
 Easting: 107 49 13

TYPE OF LOG: Sonic Log  
 LOCATION: OTHER SERVICES  
 NEUTRON  
 DENSITOMETER  
 TEMPERATURE  
 3 Arm Caliper  
 Log Head No.

PERMANENT DATUM: GROUND LEVEL  
 ELEVATION: K.B.  
 LOG MEAS FROM: ABOVE PERM DATUM  
 T.O.C.

DRILLING MEAS FROM: Ground Level  
 DATE: September 6, 2009  
 TIME: 08:00  
 DRILLER: [Redacted]  
 LOGGERS: [Redacted]

DEPTH: 156.4  
 LOG HEAD: 156.4  
 LOG HEAD: 156.4  
 LOG HEAD: 156.4

DEPTH: 156.4  
 LOG HEAD: 156.4  
 LOG HEAD: 156.4  
 LOG HEAD: 156.4

DEPTH: 156.4  
 LOG HEAD: 156.4  
 LOG HEAD: 156.4  
 LOG HEAD: 156.4

DEPTH: 156.4  
 LOG HEAD: 156.4  
 LOG HEAD: 156.4  
 LOG HEAD: 156.4

DEPTH: 156.4  
 LOG HEAD: 156.4  
 LOG HEAD: 156.4  
 LOG HEAD: 156.4

DEPTH: 156.4  
 LOG HEAD: 156.4  
 LOG HEAD: 156.4  
 LOG HEAD: 156.4

DEPTH: 156.4  
 LOG HEAD: 156.4  
 LOG HEAD: 156.4  
 LOG HEAD: 156.4

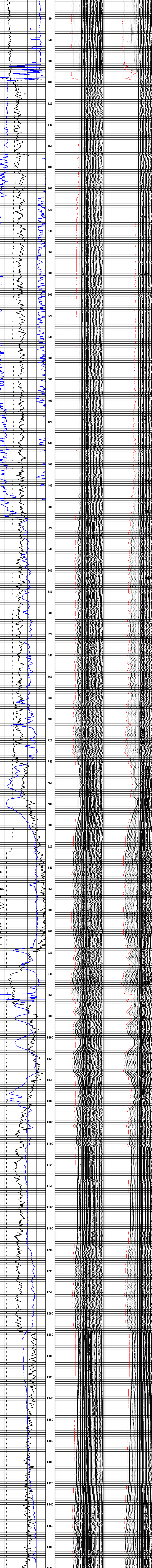
DEPTH: 156.4  
 LOG HEAD: 156.4  
 LOG HEAD: 156.4  
 LOG HEAD: 156.4

DEPTH: 156.4  
 LOG HEAD: 156.4  
 LOG HEAD: 156.4  
 LOG HEAD: 156.4

DEPTH: 156.4  
 LOG HEAD: 156.4  
 LOG HEAD: 156.4  
 LOG HEAD: 156.4

DEPTH: 156.4  
 LOG HEAD: 156.4  
 LOG HEAD: 156.4  
 LOG HEAD: 156.4

DEPTH: 156.4  
 LOG HEAD: 156.4  
 LOG HEAD: 156.4  
 LOG HEAD: 156.4



REMARKS:  
 1. 17-1/2 in O.A.  
 2. 16 in O.A.  
 3. 156.4