



COMPANY: Jet West Geophysical
 FIELD ID: S180000001
 FIELD: San Agustín Ranch
 COUNTY: Cañon
 STATE: New Mexico
 OTHER SERVICES: None

TYPE OF LOG: Bulk Density
 LOCATION: New Mexico

SRF: 26 TYP: 28 REF: 9 W
 PERMANENT DATUM: GROUND LEVEL
 ELEVATION: 7000
 LOG MEAS. FROM: Ground Level
 ABOVE/BEL. DATUM: T.O.C.

DATE: 10/2/2008
 TIME: 10:00 AM
 OPERATOR: J. BROWN

DEPTH INTERVAL: 1300 ft - 1305 ft
 LOGGING INTERVAL: 1300 ft - 1305 ft
 TYPE LOCAL INTERVAL: 5 ft
 OPERATING INTERVAL: 1300 ft - 1305 ft
 RECORDER: J. BROWN

DEPTH INTERVAL: 1305 ft - 1310 ft
 LOGGING INTERVAL: 1305 ft - 1310 ft
 TYPE LOCAL INTERVAL: 5 ft
 OPERATING INTERVAL: 1305 ft - 1310 ft
 RECORDER: J. BROWN

DEPTH INTERVAL: 1310 ft - 1315 ft
 LOGGING INTERVAL: 1310 ft - 1315 ft
 TYPE LOCAL INTERVAL: 5 ft
 OPERATING INTERVAL: 1310 ft - 1315 ft
 RECORDER: J. BROWN

DEPTH INTERVAL: 1315 ft - 1320 ft
 LOGGING INTERVAL: 1315 ft - 1320 ft
 TYPE LOCAL INTERVAL: 5 ft
 OPERATING INTERVAL: 1315 ft - 1320 ft
 RECORDER: J. BROWN

DEPTH INTERVAL: 1320 ft - 1325 ft
 LOGGING INTERVAL: 1320 ft - 1325 ft
 TYPE LOCAL INTERVAL: 5 ft
 OPERATING INTERVAL: 1320 ft - 1325 ft
 RECORDER: J. BROWN

DEPTH INTERVAL: 1325 ft - 1330 ft
 LOGGING INTERVAL: 1325 ft - 1330 ft
 TYPE LOCAL INTERVAL: 5 ft
 OPERATING INTERVAL: 1325 ft - 1330 ft
 RECORDER: J. BROWN

DEPTH INTERVAL: 1330 ft - 1335 ft
 LOGGING INTERVAL: 1330 ft - 1335 ft
 TYPE LOCAL INTERVAL: 5 ft
 OPERATING INTERVAL: 1330 ft - 1335 ft
 RECORDER: J. BROWN

DEPTH INTERVAL: 1335 ft - 1340 ft
 LOGGING INTERVAL: 1335 ft - 1340 ft
 TYPE LOCAL INTERVAL: 5 ft
 OPERATING INTERVAL: 1335 ft - 1340 ft
 RECORDER: J. BROWN

DEPTH INTERVAL: 1340 ft - 1345 ft
 LOGGING INTERVAL: 1340 ft - 1345 ft
 TYPE LOCAL INTERVAL: 5 ft
 OPERATING INTERVAL: 1340 ft - 1345 ft
 RECORDER: J. BROWN

DEPTH INTERVAL: 1345 ft - 1350 ft
 LOGGING INTERVAL: 1345 ft - 1350 ft
 TYPE LOCAL INTERVAL: 5 ft
 OPERATING INTERVAL: 1345 ft - 1350 ft
 RECORDER: J. BROWN

DEPTH INTERVAL: 1350 ft - 1355 ft
 LOGGING INTERVAL: 1350 ft - 1355 ft
 TYPE LOCAL INTERVAL: 5 ft
 OPERATING INTERVAL: 1350 ft - 1355 ft
 RECORDER: J. BROWN

DEPTH INTERVAL: 1355 ft - 1360 ft
 LOGGING INTERVAL: 1355 ft - 1360 ft
 TYPE LOCAL INTERVAL: 5 ft
 OPERATING INTERVAL: 1355 ft - 1360 ft
 RECORDER: J. BROWN

DEPTH INTERVAL: 1360 ft - 1365 ft
 LOGGING INTERVAL: 1360 ft - 1365 ft
 TYPE LOCAL INTERVAL: 5 ft
 OPERATING INTERVAL: 1360 ft - 1365 ft
 RECORDER: J. BROWN

DEPTH INTERVAL: 1365 ft - 1370 ft
 LOGGING INTERVAL: 1365 ft - 1370 ft
 TYPE LOCAL INTERVAL: 5 ft
 OPERATING INTERVAL: 1365 ft - 1370 ft
 RECORDER: J. BROWN

DEPTH INTERVAL: 1370 ft - 1375 ft
 LOGGING INTERVAL: 1370 ft - 1375 ft
 TYPE LOCAL INTERVAL: 5 ft
 OPERATING INTERVAL: 1370 ft - 1375 ft
 RECORDER: J. BROWN

DEPTH INTERVAL: 1375 ft - 1380 ft
 LOGGING INTERVAL: 1375 ft - 1380 ft
 TYPE LOCAL INTERVAL: 5 ft
 OPERATING INTERVAL: 1375 ft - 1380 ft
 RECORDER: J. BROWN

DEPTH INTERVAL: 1380 ft - 1385 ft
 LOGGING INTERVAL: 1380 ft - 1385 ft
 TYPE LOCAL INTERVAL: 5 ft
 OPERATING INTERVAL: 1380 ft - 1385 ft
 RECORDER: J. BROWN

DEPTH INTERVAL: 1385 ft - 1390 ft
 LOGGING INTERVAL: 1385 ft - 1390 ft
 TYPE LOCAL INTERVAL: 5 ft
 OPERATING INTERVAL: 1385 ft - 1390 ft
 RECORDER: J. BROWN

DEPTH INTERVAL: 1390 ft - 1395 ft
 LOGGING INTERVAL: 1390 ft - 1395 ft
 TYPE LOCAL INTERVAL: 5 ft
 OPERATING INTERVAL: 1390 ft - 1395 ft
 RECORDER: J. BROWN

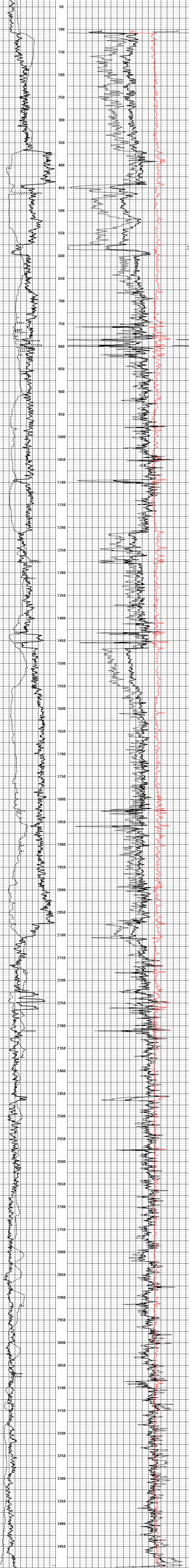
DEPTH INTERVAL: 1395 ft - 1400 ft
 LOGGING INTERVAL: 1395 ft - 1400 ft
 TYPE LOCAL INTERVAL: 5 ft
 OPERATING INTERVAL: 1395 ft - 1400 ft
 RECORDER: J. BROWN

DEPTH INTERVAL: 1400 ft - 1405 ft
 LOGGING INTERVAL: 1400 ft - 1405 ft
 TYPE LOCAL INTERVAL: 5 ft
 OPERATING INTERVAL: 1400 ft - 1405 ft
 RECORDER: J. BROWN

DEPTH INTERVAL: 1405 ft - 1410 ft
 LOGGING INTERVAL: 1405 ft - 1410 ft
 TYPE LOCAL INTERVAL: 5 ft
 OPERATING INTERVAL: 1405 ft - 1410 ft
 RECORDER: J. BROWN

DEPTH INTERVAL: 1410 ft - 1415 ft
 LOGGING INTERVAL: 1410 ft - 1415 ft
 TYPE LOCAL INTERVAL: 5 ft
 OPERATING INTERVAL: 1410 ft - 1415 ft
 RECORDER: J. BROWN

DEPTH INTERVAL: 1415 ft - 1420 ft
 LOGGING INTERVAL: 1415 ft - 1420 ft
 TYPE LOCAL INTERVAL: 5 ft
 OPERATING INTERVAL: 1415 ft - 1420 ft
 RECORDER: J. BROWN



REMARKS:

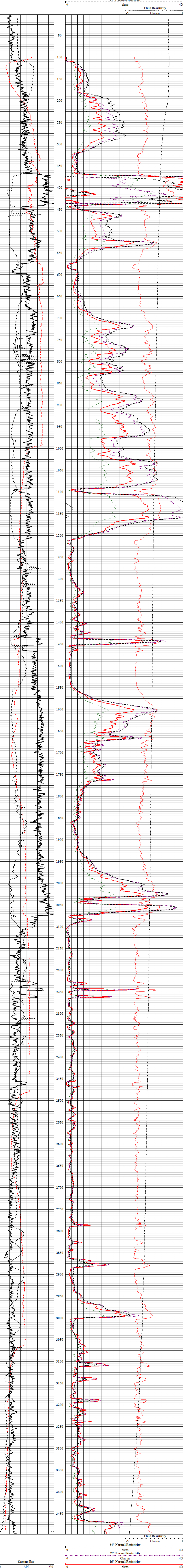


COMPANY: Jet West Drilling
 WELL ID: Steingraber Test #1
 FIELD: San Agustín Ranch
 COUNTY: Canon
 STATE: New Mexico
 OTHER SERVICES: None

TYPE OF LOG: Electric Log/Gamma Ray
 LOCATION: Steingraber Test #1
 SURF: 26
 TOP: 25
 ROR: 9 W
 PERMANENT DATUM: GROUND LEVEL
 LOG MENS. FROM: Ground Level
 ABOVE PERM DATUM: T.O.C.
 DRILLING MENS. FROM: Ground Level
 DATE: 04-2008
 TYPE PERIOD IN FEET: 10
 SENSITIVITY: 100000
 TYPICALS: 100000

DEPTH FEET: 1000 ft
 DEPTH METERS: 304.8 m
 DEPTH FEET: 1000 ft
 DEPTH METERS: 304.8 m
 OPERATOR: JET WEST
 OPERATOR PHONE: 505-833-1111
 OPERATOR FAX: 505-833-1111
 OPERATOR EMAIL: info@jetwest.com
 OPERATOR WEBSITE: www.jetwest.com
 OPERATOR ADDRESS: 1000 N. 1st St., Suite 100, Albuquerque, NM 87102
 OPERATOR CITY: Albuquerque, NM
 OPERATOR STATE: NM
 OPERATOR ZIP: 87102
 OPERATOR COUNTRY: USA
 OPERATOR PHONE: 505-833-1111
 OPERATOR FAX: 505-833-1111
 OPERATOR EMAIL: info@jetwest.com
 OPERATOR WEBSITE: www.jetwest.com
 OPERATOR ADDRESS: 1000 N. 1st St., Suite 100, Albuquerque, NM 87102
 OPERATOR CITY: Albuquerque, NM
 OPERATOR STATE: NM
 OPERATOR ZIP: 87102
 OPERATOR COUNTRY: USA

NO.	BIT	FROM	TO	SIZE	WGT.	FROM	TO
1	1.188 in.	0 ft	3500 ft	10 in.	100 lb	0 ft	110 ft
2							



NO.	BIT	FROM	TO	SIZE	WGT.	FROM	TO
1	1.188 in.	0 ft	3500 ft	10 in.	100 lb	0 ft	110 ft
2							



COMPANY: Henkle Drilling
 WELL ID: Stratigraphic Test #1
 FIELD: San Augustin Ranch
 COUNTY: Calaveras
 STATE: New Mexico
 TYPE OF LOG: Gamma Ray Neutron
 LOCATION: Caliper Temperature
 OTHER SERVICES: Log Sonic Temp

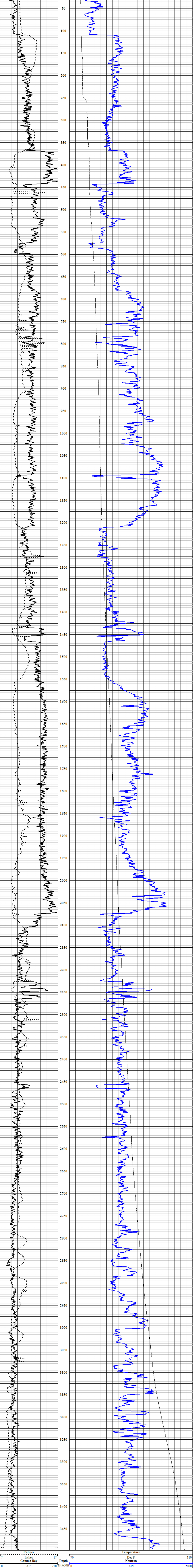
State Plane 1927
 Northing: SEC. 26 TWP. 23. RBE. 9 W.
 Easting: ELEVATION: 7000 ft. h.a.
 LOG MENS. FROM: Ground Level ABOVE/BEL. DNTM: T.O.C.
 DIST. LOG MENS. FROM: Ground Level O.I.
 DATE: 10-4-2008
 RUN NO: 1
 TYPE PLD IN HOLE: unsmoothed
 TYPE LOG: SDRIVE
 IDENTITY: null

PERMANENT DNTM: GROUND LEVEL
 LOG MENS. FROM: Ground Level
 DIST. LOG MENS. FROM: Ground Level
 DATE: 10-4-2008
 RUN NO: 1
 TYPE PLD IN HOLE: unsmoothed
 TYPE LOG: SDRIVE
 IDENTITY: null

DEPTH LABELS: 3000 ft. 3000 ft.
 DEPTH LOG CODE: 3000 ft. MAX. RE. THICK: 0.2 ft.
 BIT M. LOGGED INTERVAL: 3000 ft. DIGITIZED INTERVAL: 0.2 ft.
 OPERATING TIME: 1.000000
 REC. CALIBRATION: 1.000000

BOREHOLE RECORD:
 NO. BIT FROM TO
 1 1-18 in. 0 ft. 3000 ft.
 2
 3

REMARKS:





COMPANY: Jet West Drilling
 FIELD: Stoughton Test #1
 SITE: Sun Agustin Ranch

COUNTY: Canton
 STATE: New Mexico

TYPE OF LOG: Full Wave Sonic
 LOCATION: Section 20, Block 1, Township 36N, Range 9W

PERMANENT DATUM: GROUND LEVEL
 ELEVATION: 5200.00
 LOG MENS. FROM: Ground Level
 ABOVE/BENEATH DATUM: ABOVE

DISTANCE MENS. FROM: Ground Level
 DIST. TYPE: 1st 4' Zone
 DATE: 08/11/2008
 TIME: 08:00
 TYPE OF LOG: FULL WAVE SONIC
 INSTRUMENT: SENSITIVITY

DEPTH INTERVALS: 3000 ft. MAX. PER. INTERVAL: 120 ft.
 LOGGING INTERVAL: 3000 ft. IDENTIFIED INTERVAL: 120 ft.

OPERATING TIME: 1:00:00
 RECORDED BY: J. Smith
 WITNESSED BY:

BOREHOLE RECORD
 NO. BIT SIZE: 3000 ft.
 IN. IN. WGT. FROM TO TO
 1. 1.188 in. 0 ft. steel 0 ft. 1100 ft.

REMARKS:

DEPTH INTERVALS	3000 ft.	MAX. PER. INTERVAL	120 ft.
LOGGING INTERVAL	3000 ft.	IDENTIFIED INTERVAL	120 ft.
OPERATING TIME	1:00:00	RECORDED BY	J. Smith
WITNESSED BY			
BOREHOLE RECORD			
NO. BIT SIZE	3000 ft.	IN. IN.	WGT. FROM TO TO
1. 1.188 in.	0 ft.	steel	0 ft. 1100 ft.

