

Mclemore, Virginia <virginia.mclemore@nmt.edu>

XRD results for 9 samples

1 message

McNamara, Kelsey <kelsey.mcnamara@nmt.edu>
To: "Mclemore, Virginia" <virginia.mclemore@nmt.edu>
Cc: Virgil Lueth <Virgil.Lueth@nmt.edu>

Wed, Mar 17, 2021 at 1:37 PM

Hi Ginger,

Attached are the results for your nine samples submitted 3/3/21, in both pdf and jpeg form. The jpegs are higher resolution, but are split into two parts.

Below is a quick breakdown of the results. Keep in mind that XRD depends on crystal structure and not chemistry. With that said, further identification of the amphiboles and/or micas will require geochemical or thin section data.

Tajo1-58: Muscovite, quartz, & microcline
Lone Mt_gray fracture: Fluoro-edenite & tremolite
LM-5: Fluorite (purple), calcite, sanidine, & quartz (whole rock)
All America Iron Mine: Mostly albite & microcline with some magnesio-riebeckite
Red Cloud_black: Birnessite, with a variety of other minerals (quartz, albite, fluorite, nontronite)
Gal575_black: Mostly tremolite & apatite, lesser albite, & quartz
Corn69: Mostly quartz & kaolinite, with lesser hematite, svanbergite
Corn70: Mostly kaolinite, with anatase & illite
Gal463: Mostly quartz & tremolite, lesser diopside, sandine, & albite

If you'd like to discuss the results further, please contact Virgil. I'll put the samples back in your mailbox sometime today.

Thanks,

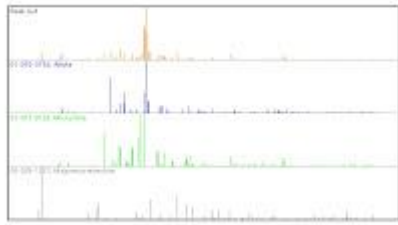
Kelsey

--

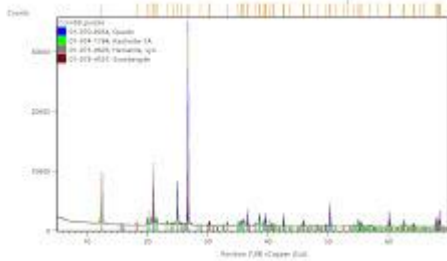
Kelsey McNamara
New Mexico Bureau of Geology
Mineral Museum Curator & XRD Lab Manager
575.835.5418

27 attachments

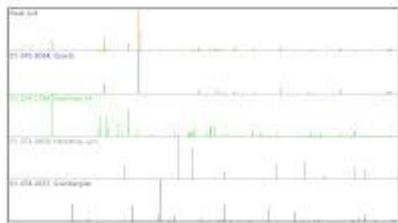
All America Iron Mine_blue gray_2.JPG
96K



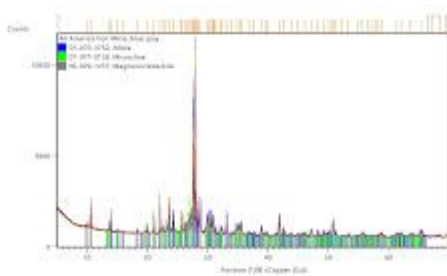
Corn69_purple_1.JPG
132K



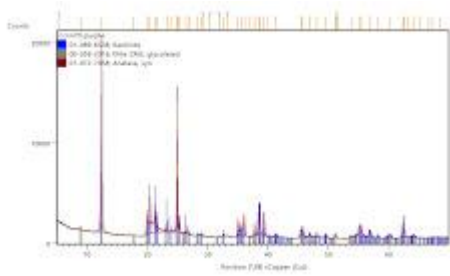
Corn69_purple_2.JPG
94K



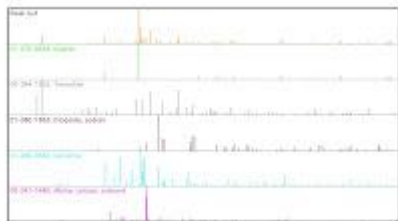
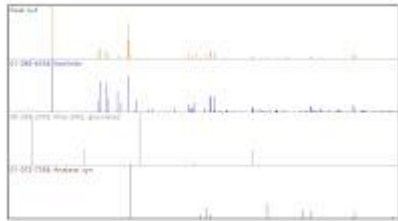
All America Iron Mine_blue gray_1.JPG
160K



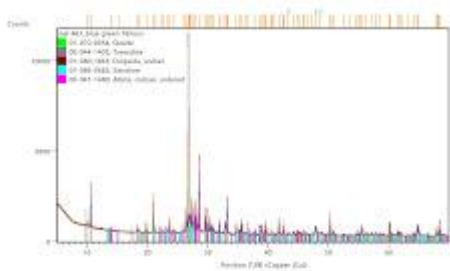
Corn70_purple_1.JPG
138K



Corn70_purple_2.JPG
85K

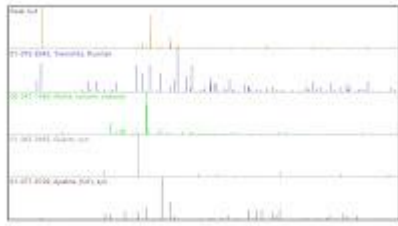


Gal 463_blue green fibrous_2.JPG
118K

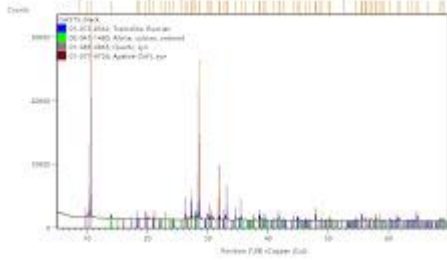


Gal 463_blue green fibrous_1.JPG
162K

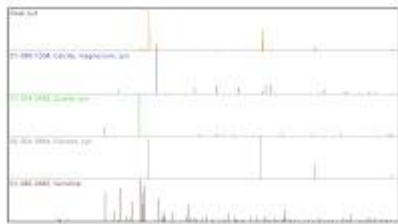
Gal575_black_2.JPG
106K



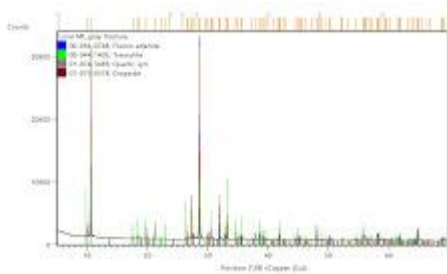
Gal575_black_1.JPG
147K



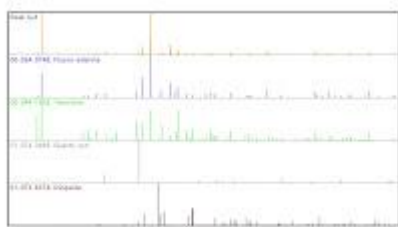
LM-5_whole rock_2.JPG
94K



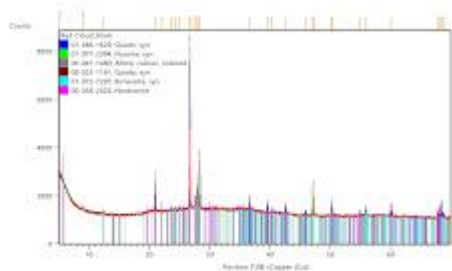
Lone Mt_gray fracture_1.JPG
148K



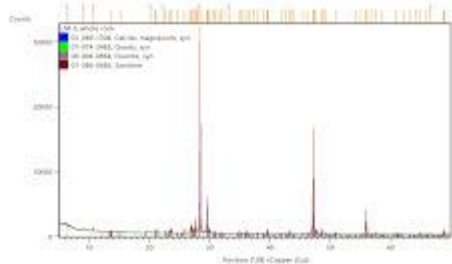
Lone Mt_gray fracture_2.JPG
102K




Red Cloud_black_1.JPG
197K




LM-5_whole rock_1.JPG
131K





Red Cloud_black_2.JPG
106K


 **Tajo1-58_green_1.JPG**
125K


 **Tajo1-58_green_2.JPG**
88K


 **All America Iron Mine_blue gray.pdf**
32K

 **Gal 463_blue green fibrous.pdf**
34K


 **LM-5_whole rock.pdf**
30K


 **Corn69_purple.pdf**
30K

 **Corn70_purple.pdf**
29K

 **Lone Mt_gray fracture.pdf**
32K

 **Red Cloud_black.pdf**
36K

 **Tajo1-58_green.pdf**
29K

 **Gal575_black.pdf**
32K