

Caleb Stotts  
Executive Director  
Chama Peak Land Alliance  
[caleb@chamapeak.org](mailto:caleb@chamapeak.org)  
505-470-1943

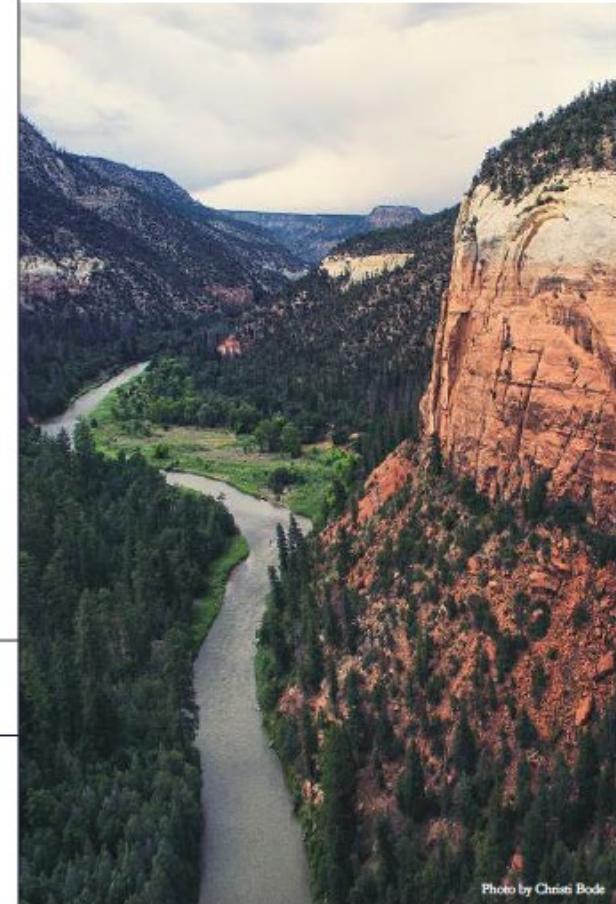


RESPONSIBLE LAND  
STEWARDSHIP

San Juan – Chama  
Watershed Partnership

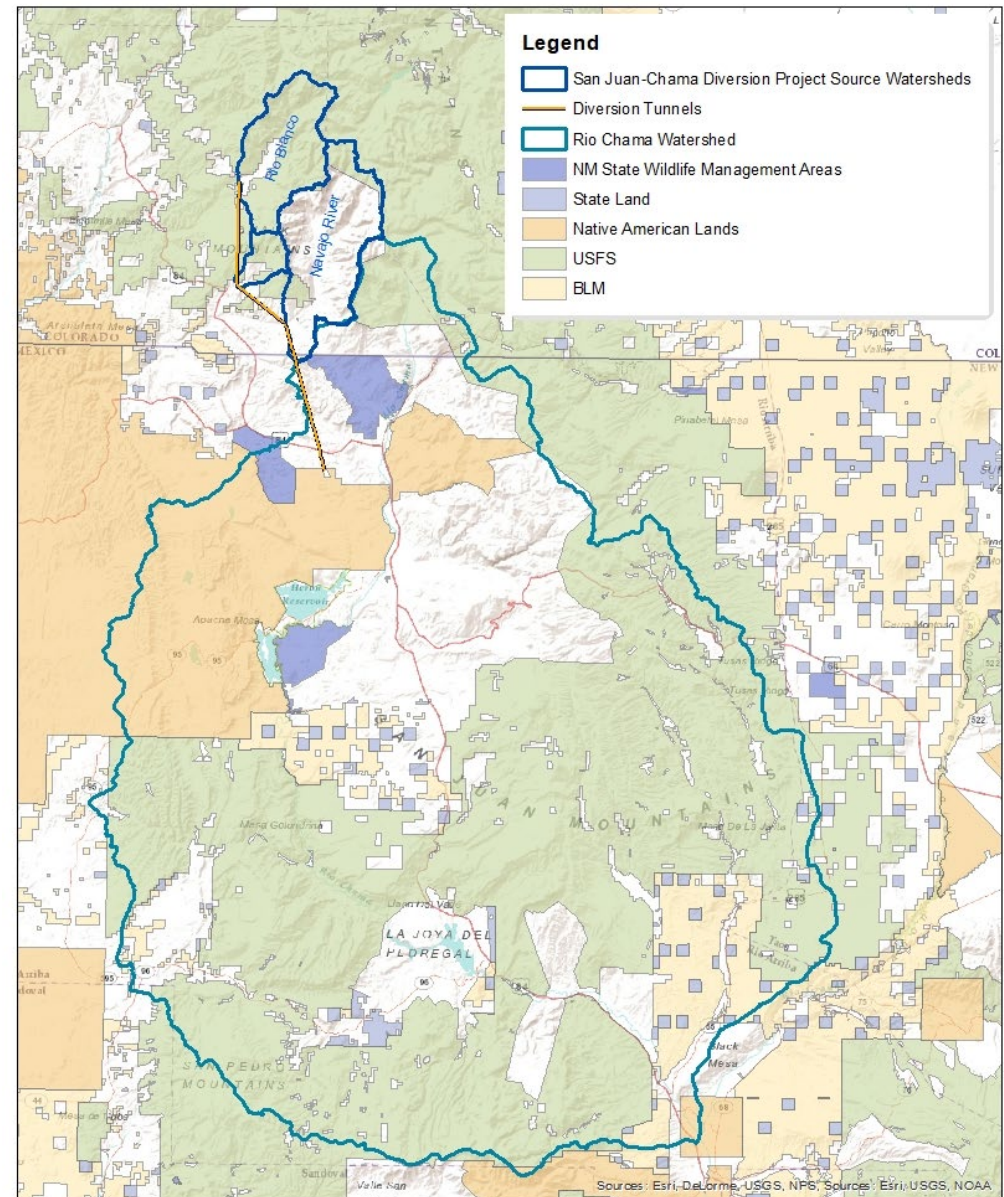
Focal Area Atlas

February, 2023



**As a watershed partnership, how do we prioritize treatment areas?**

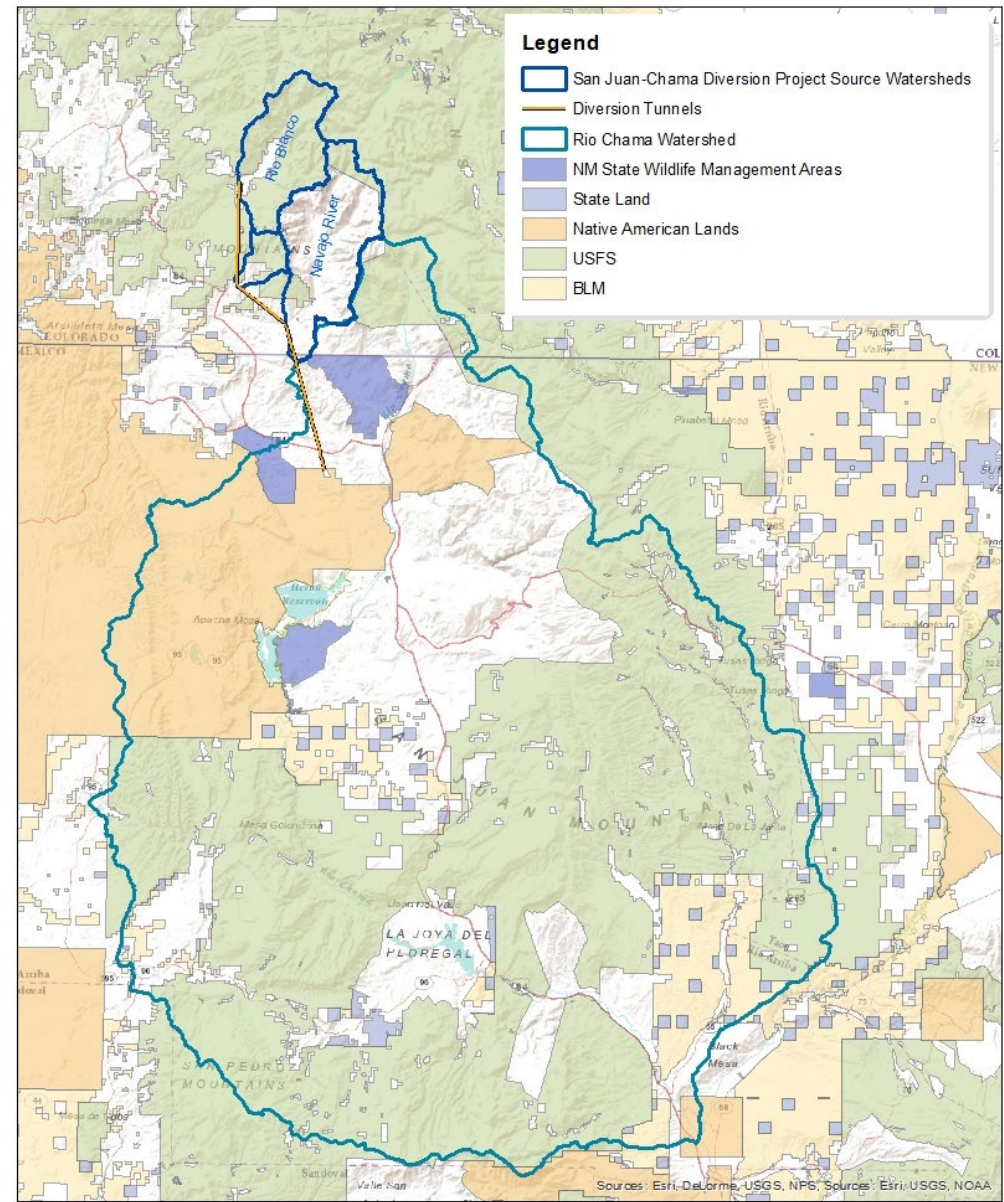
Answer: SJCWP doesn't prioritize, but we can provide tools so others can prioritize



San Juan-Chama Watershed Partnership Area

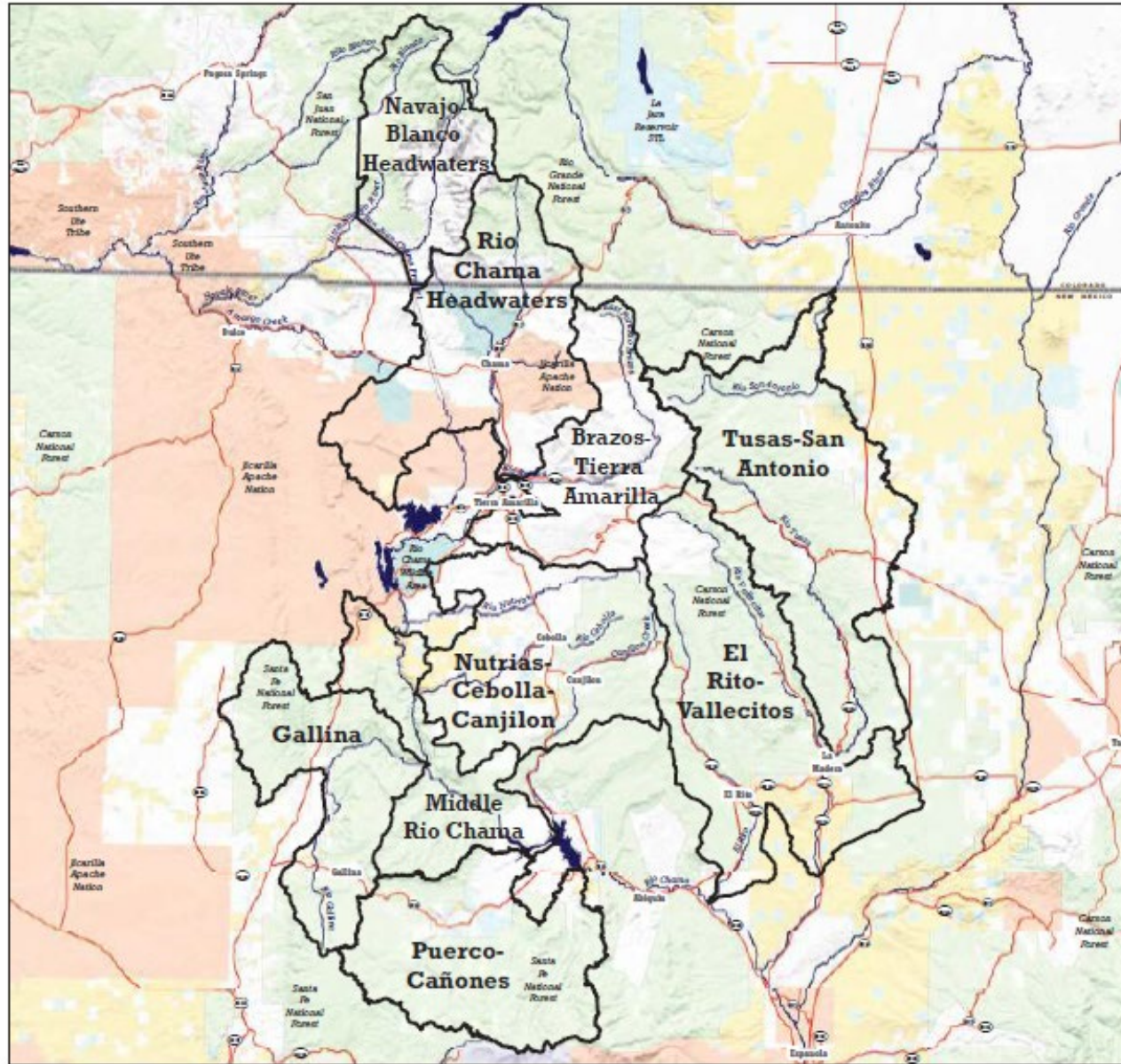
# Focal Area Atlas

1. Describe the importance of focal areas and values at risk
2. Identify potential areas for treatment
3. How will this work leverage other efforts? Who is working in the area and what are they doing?



San Juan-Chama Watershed  
Partnership Area

## San Juan-Chama Watershed Partnership Focal Areas



-  Focal Area boundary
-  Bureau of Land Management
-  Bureau of Reclamation
-  Department of Defense
-  US Forest Service
-  Native American Lands
-  National Park Service
-  Private Lands
-  State Trust Land
-  State Game & Fish



1:600,000



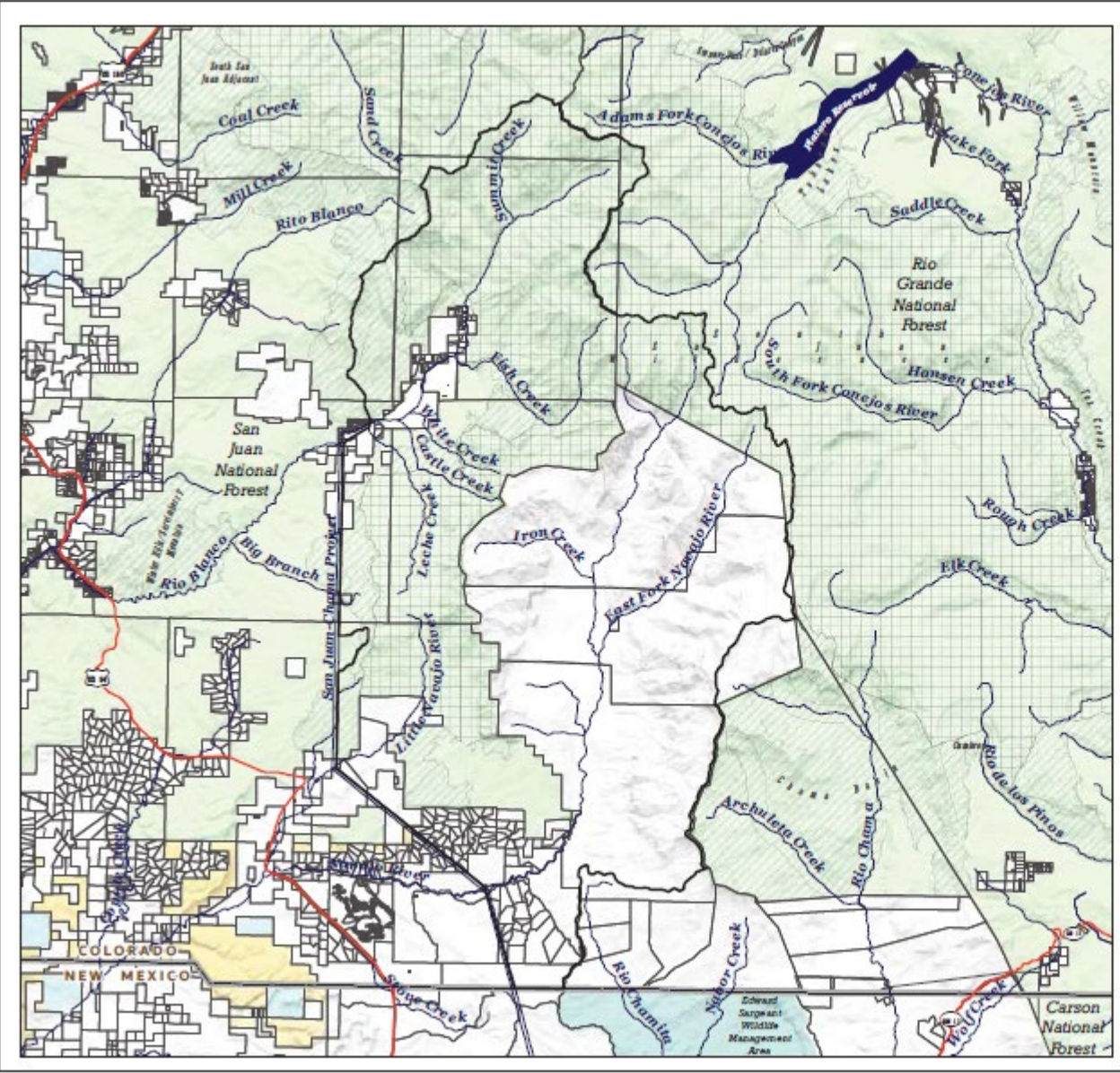
Geographic Coordinate System: North American Datum of 1983  
Projected Coordinate System: NAD83 UTM Zone 13 North

U.S. Department of Interior, Bureau of Land Management (BLM), BLM New Mexico Surface Ownership, 2022.

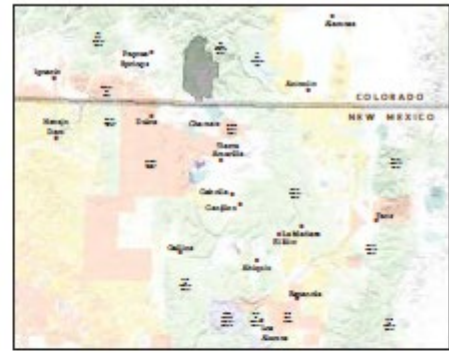
U.S. Department of Interior, Bureau of Land Management (BLM), BLM Colorado Surface Management Agency, 2021.

USGS The National Map: 3D Elevation Program, USGS Earth Resources Observation & Science (EROS) Center, GMTED2010, Data Retrieved March, 2021.

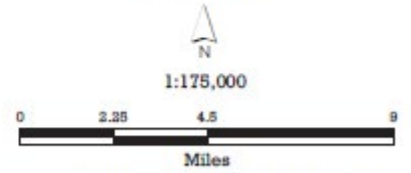
No warranties are made as to the accuracy of this map. This map is for geographical reference only and is not to be used as a survey or legal document.



## Land ownership Navajo-Blanco Headwaters



- Focal Area boundary
- Parcel boundaries
- BLM
- State
- State Game & Fish
- Private
- US Forest Service
- Wilderness
- Roadless Area



Geographic Coordinate System: North American Datum of 1983  
 Projected Coordinate System: NAD83 UTM Zone 13 North

U.S. Department of Interior, Bureau of Land Management (BLM), BLM New Mexico Surface Ownership, 2022.

U.S. Department of Interior, Bureau of Land Management (BLM), BLM Colorado Surface Management Agency, 2021.

USGS The National Map, 3D Elevation Program, 30m Earth Resources Observation & Science (EOS) Center GMTX2010, Data Retrieved March, 2021.

No warranties are made as to the accuracy of this map. This map is for geographical reference only and is not to be used as a survey or legal document.



## Navajo - Blanco Headwaters Focal Area

Acres – 122,328

### Background Information

- In the San Juan watershed, this focal area lies just north of the New Mexico/Colorado border and is entirely within the state of Colorado. The area is made up of San Juan National Forest and private lands, and includes the headwaters of the Rio Blanco, the Little Navajo and the Navajo River. Wilderness and roadless areas within the San Juan National Forest limit restoration and thinning opportunities on USFS lands.
- This focal area is known to have San Juan Colorado Cutthroat habitat in high elevation streams.
- This area is also of high importance as it is the source water for the San Juan- Chama diversion and can make up 78% of Albuquerque's and 80% of Santa Fe's annual municipal water usage. The Nature Conservancy 2023 Rio Grande Water Fund Wildfire Risk Assessment shows this area to be the most important public water source for New Mexico's population.

### Surface Water Users

- Active source water irrigation present in the river valleys.
- Downstream users include the Village of Dulce, NM, which utilizes the Navajo River as the primary source of municipal water.
- San Juan- Chama Diversion source water for many New Mexico communities. Beneficiaries include Albuquerque Bernalillo County Water Utility Authority, Middle Rio Grande Conservancy District, Jicarilla Apache Nation, City of Santa Fe, Taos Pueblo, Ohkay Owingeh, County of Los Alamos, City of Española, City of Belen, Town of Bernalillo, Town of Taos, Town of Taos Settlement, Village of Los Lunas, County of Santa Fe, Town of Red River, El Prado Water and Sanitation District, Village of Taos Ski Valley, Pojoaque Valley Irrigation District, Aamodi Settlement, Cochiti Recreation Pool.

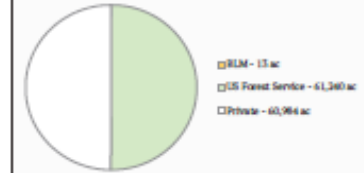
### Threats and Opportunities

- The threat of severe wildfire and post-fire erosion is significant for most of this area.
- Many USFS acres in this area are Wilderness or Roadless designation, so management opportunities will be limited in these designations. Due to a large amount of steep topography, surface rock, and wilderness designation on USFS lands, much of the forest treatment opportunities are on private land and within large ranches.

### Known Watershed Plans and Projects

- Proposed fuel mitigation treatments will help achieve goals listed as part of the 2-3-2 Cohesive Strategy Partnership, San Juan-Chama Watershed Partnership, San Juan Headwaters Forest Health Partnership, Chama Peak Land Alliance, Colorado Forest Action Plan, Rio Chama Collaborative Forest Landscape Restoration Program (CFLRP), Rio Grande Water Fund Cohesive Strategy, and Navajo - Blanco Resiliency Strategy. Some larger ranches have Forest Management Plans.
- Working for Rio Grande Water Fund and downstream water users, CPLA has treated over 900 acres between 2018-2022.
- USFS are in planning stages for treatments along the Price Lakes Road. Rio Chama CFLRP could help fund treatments in this area.
- Private landowners have completed treatments on a substantial portion of treatable acres on larger ranches. Some larger ranches have Forest Management Plans.
- The Upper San Juan Watershed Enhancement Partnership convened in 2022 to examine environmental and recreational water needs and have described restoration opportunities in this area to the Colorado Water Plan.
- The New Mexico Shared Stewardship Portal provides a shared space for stakeholders to track planned, current, and completed projects that involve natural resources management.

### Land ownership



### Major vegetation types



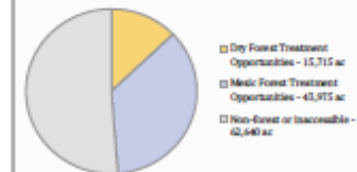
### Threat of severe wildfire

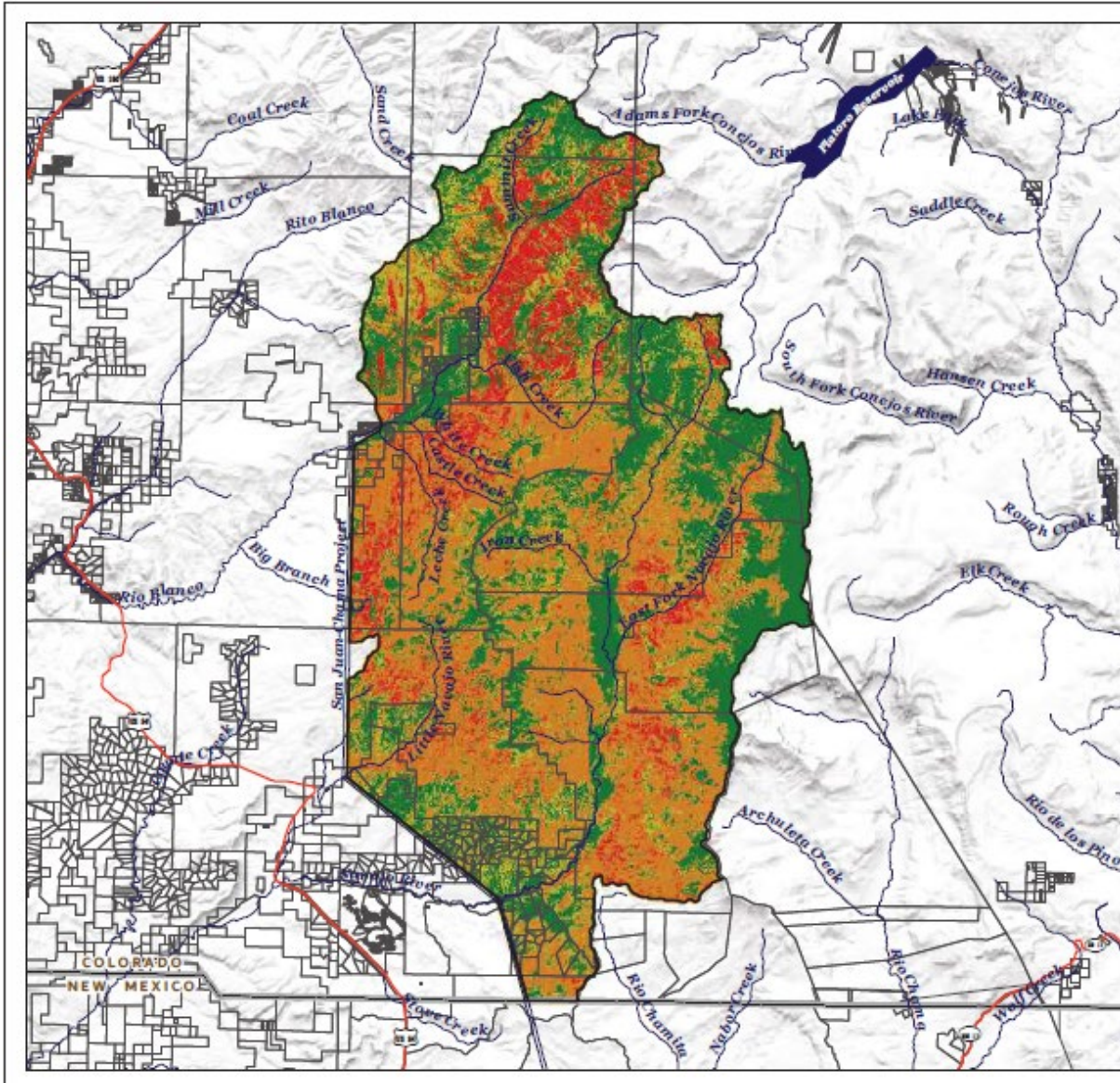


### Threat of postfire erosion



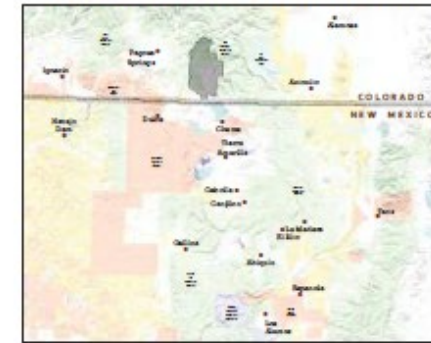
### Forest treatment opportunities




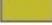






## Threat of severe wildfire

### Navajo-Blanco Headwaters



-  Focal Area boundary
-  Parcel boundaries
- Threat of wildfire burn severity
  -  Low
  -  Moderate
  -  High
  -  Very high



1:175,000



Geographic Coordinate System: North American Datum of 1983  
 Projected Coordinate System: NAD 83 UTM Zone 13 North

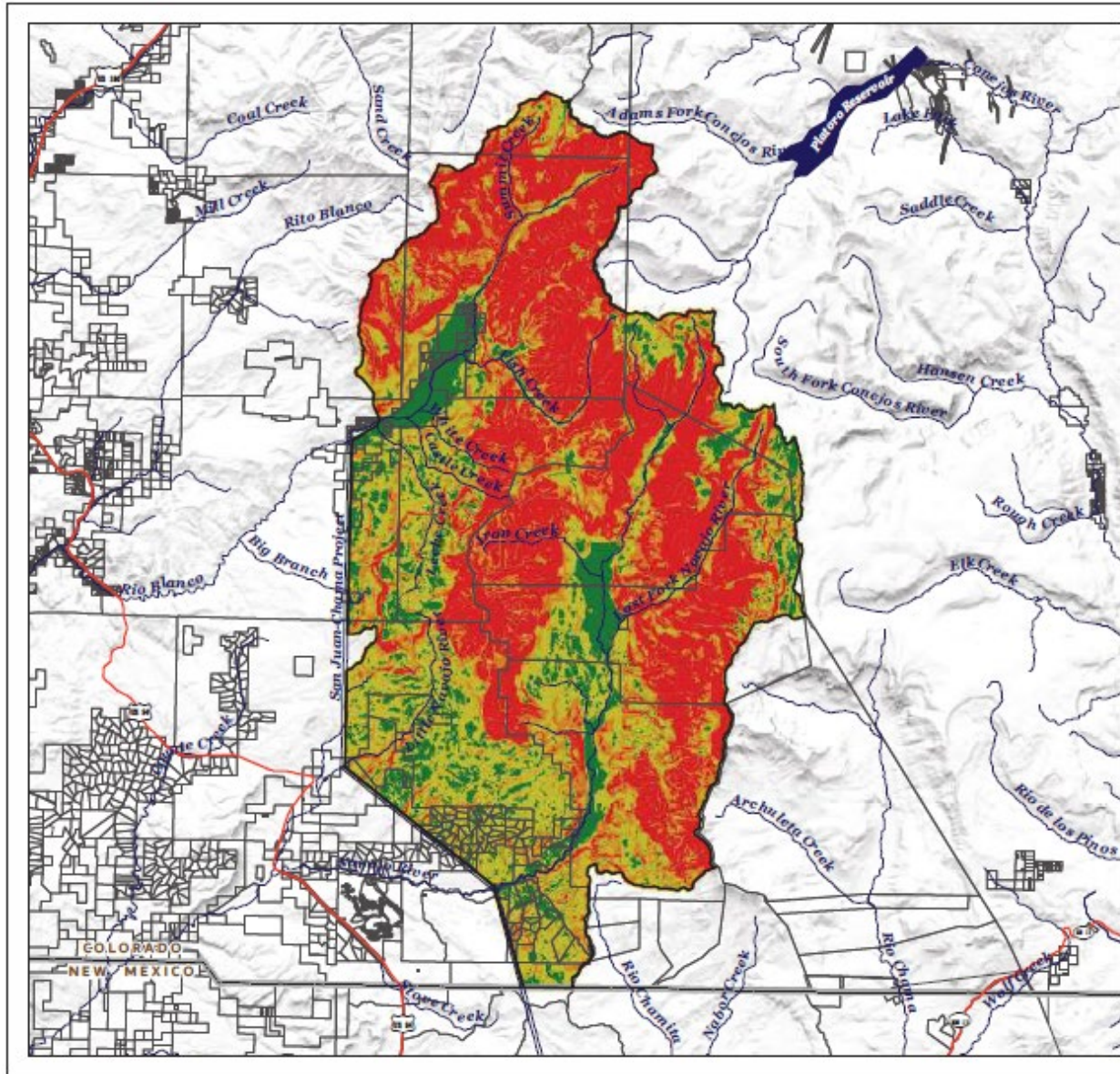
Threat of wildfire burn severity: Data published by New Mexico  
 Forest Action Plan (NMFAP), 2020.

Probability of extreme fire behavior: Data provided by The Nature Conservancy  
 (TNC), 2022.

IGRS The National Map 3D Elevation Program, USGS Earth Resources Observation &  
 Science (EROS) Center: GMTED 2010. Data Released March, 2021.

No warranties are made as to the accuracy of this map. This map is for geographical  
 reference only and is not to be used as a survey or legal document.





## Threat of postfire erosion Navajo-Blanco Headwaters



Focal Area boundary

Parcel boundaries

Threat of postfire erosivity index

Low

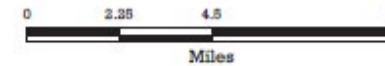
Moderate

High

Very high



1:175,000



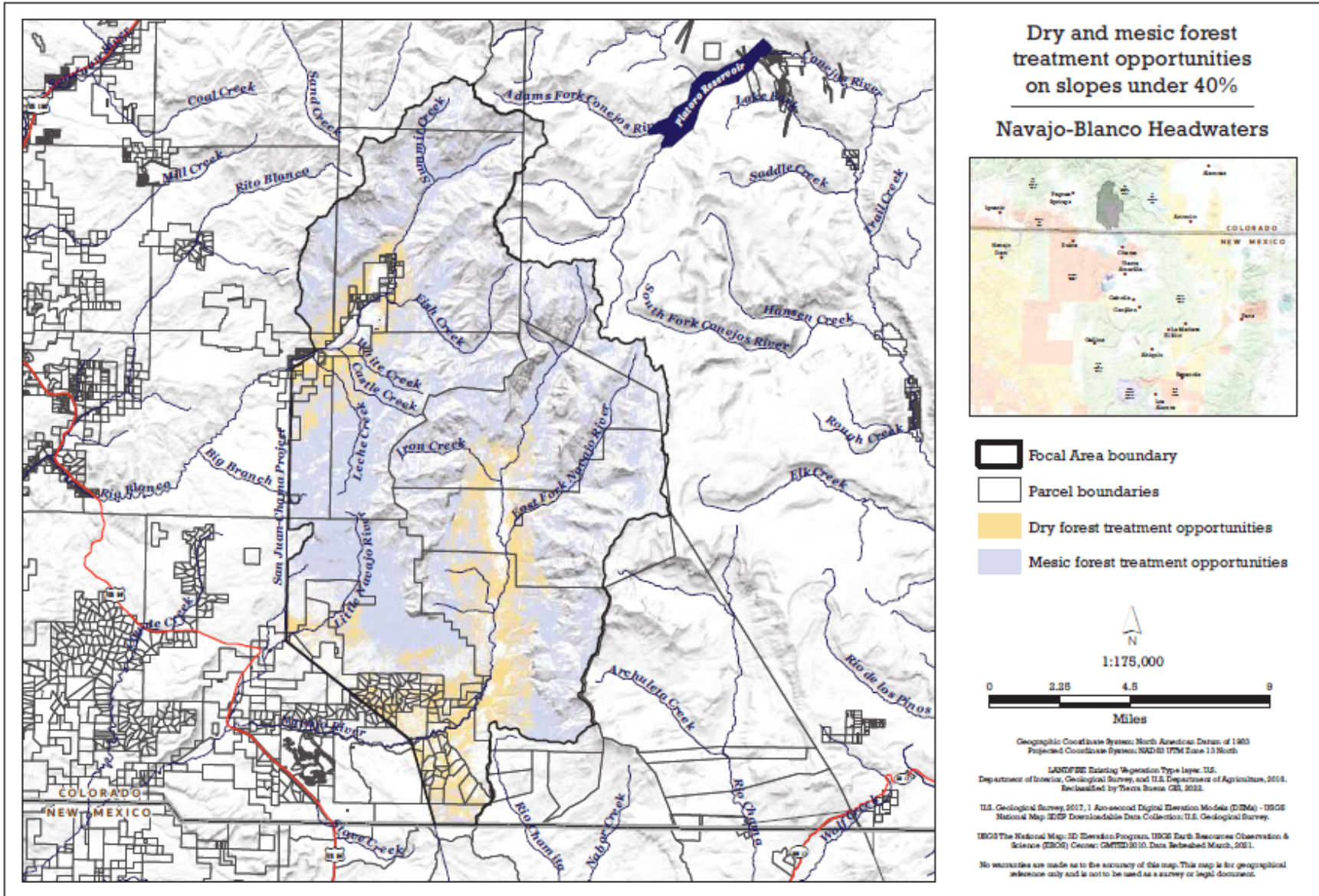
Geographic Coordinate System: North American Datum of 1983  
Projected Coordinate System: NAD83 UTM Zone 13 North

Threat of postfire erosivity index. Data published by New Mexico  
Forest Action Plan (DMRP), 2020.

©2021 The National Map: 3D Elevation Program. USGS Earth Resources Observation & Science (EROS) Center. GMTED2010. Data Released March, 2021.

No warranties are made as to the accuracy of this map. This map is for geographical reference only and is not to be used as a survey or legal document.





visit [sanjuanchama.org](http://sanjuanchama.org) or [chamapeak.org](http://chamapeak.org) to download

Caleb Stotts  
Executive Director  
Chama Peak Land Alliance  
[caleb@chamapeak.org](mailto:caleb@chamapeak.org)  
505-470-1943

