

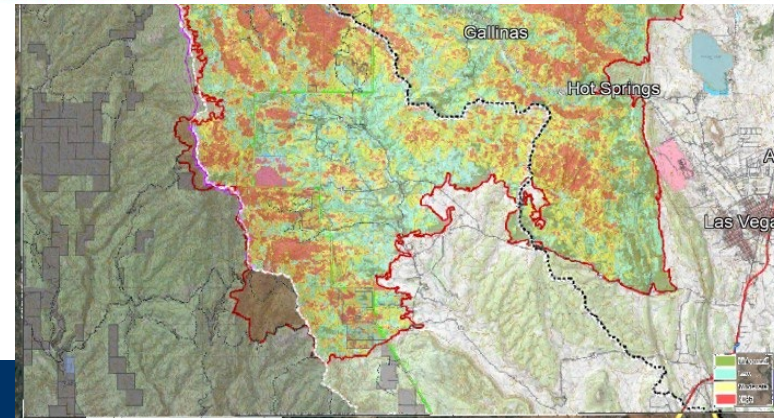
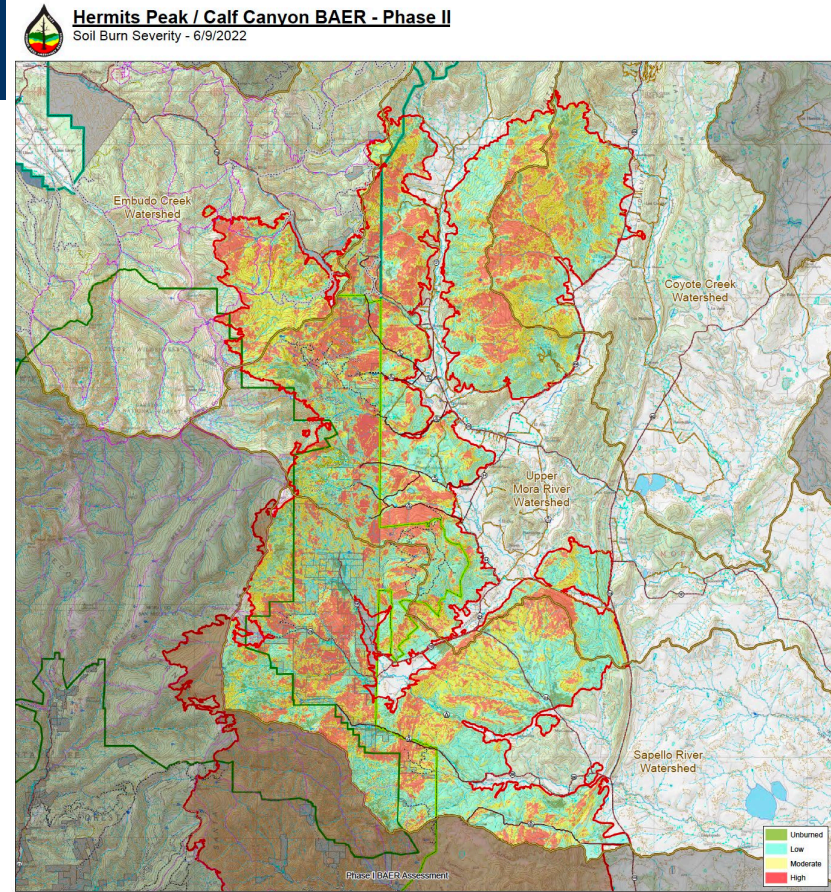


# Fire and Watershed Health: Aftermath of the Hermit's Peak/ Calf Canyon Fire

Phoebe K. Suina  
High Water Mark, LLC  
May 2024

# Hermits Peak/ Calf Canyon Fire And Post Wildfire Flooding

- Hermits Peak/ Calf Canyon Fire
  - Multiple watersheds
  - Multiple counties
- Fire Damages
  - Homes, Utilities, Roads, Fences, Animals, and Vegetation
- Post-Wildfire Flooding Concerns
- Type of Post Wildfire Activities and Flood Mitigation
  - Emergency Measures
  - Interim Structures
  - Watershed measures
  - Roads
  - Thinning and hazard tree removal
  - Debris Removal
- Ongoing and continued work



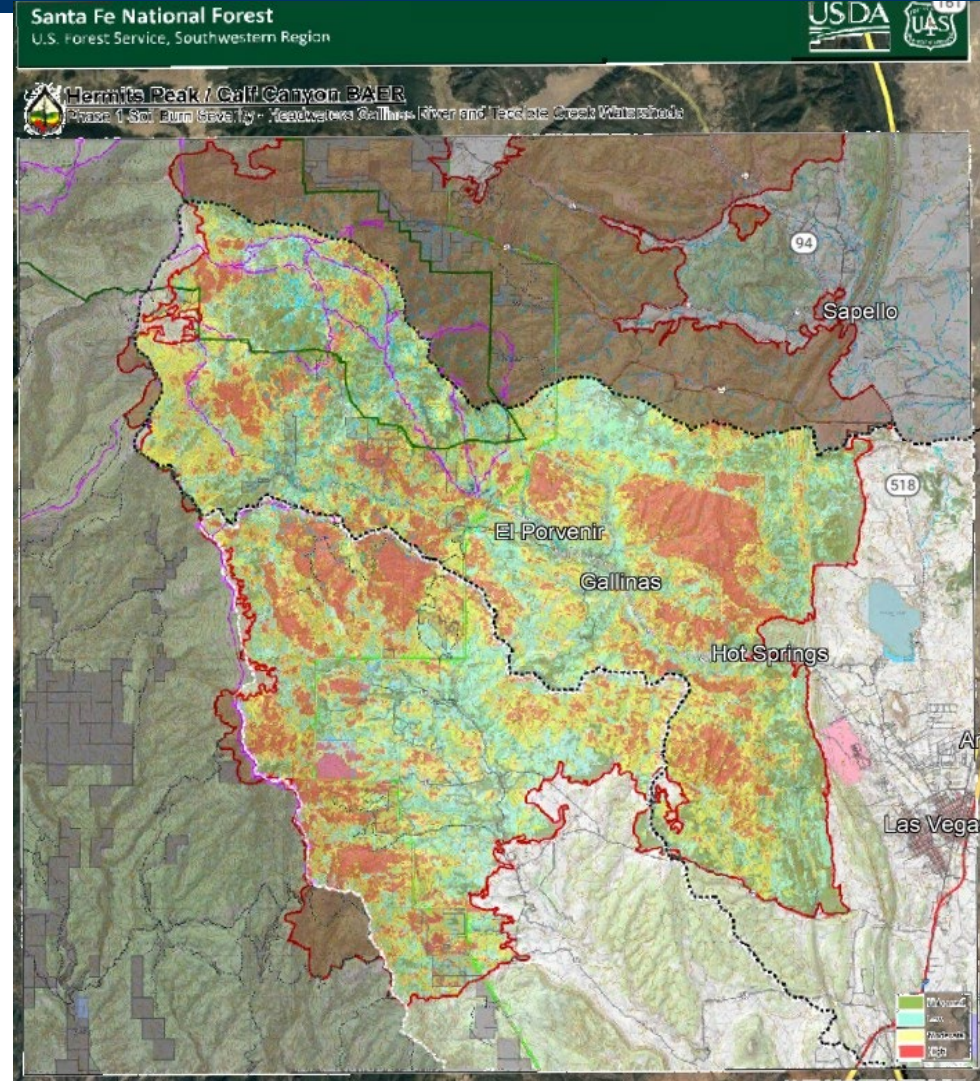
# Post Wildfire Concerns - Focus in on Some Examples and Comparisons

## Gallinas

Approximately 64,000 Acres

## Tecolote

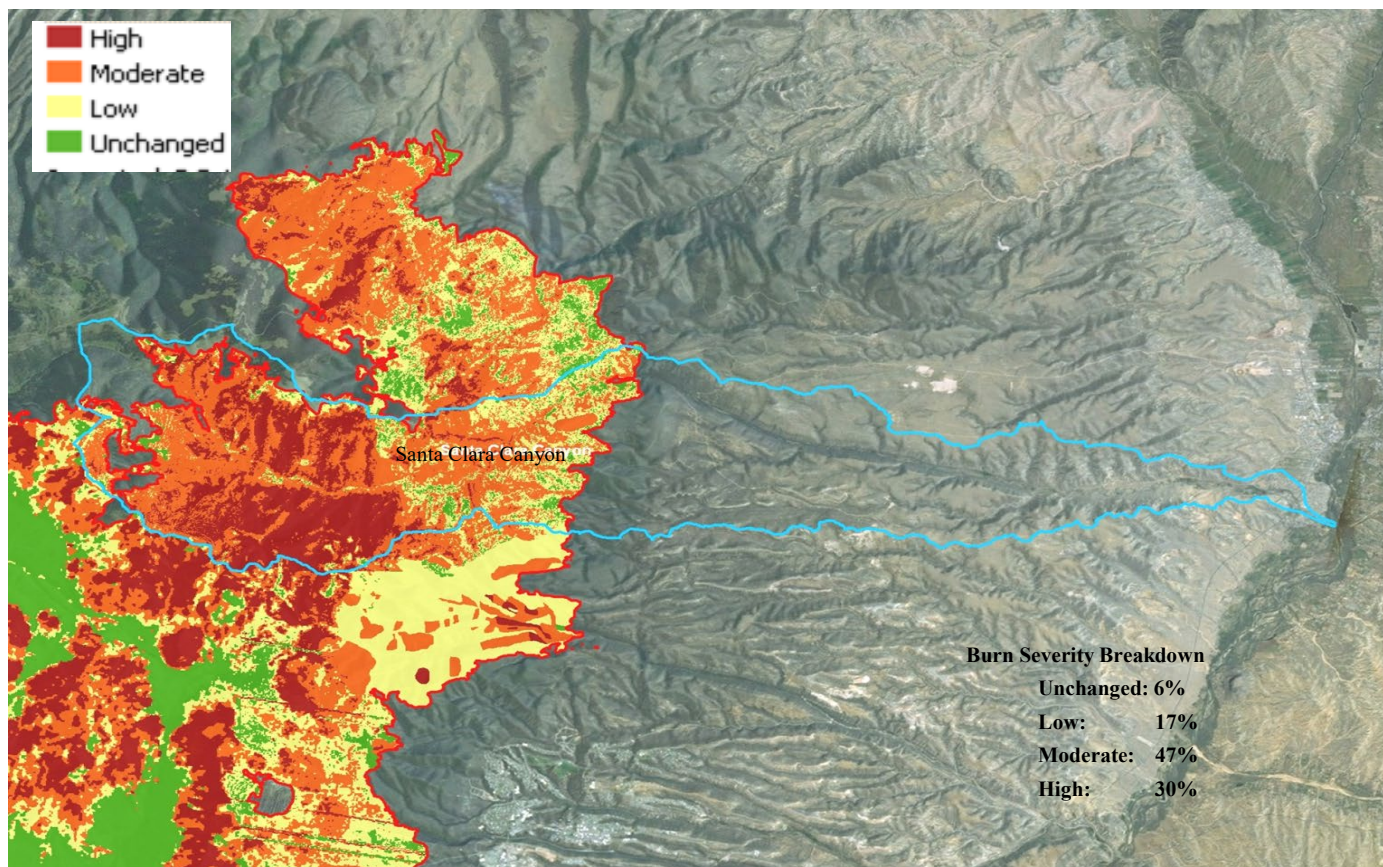
Approximately 51,000 Acres



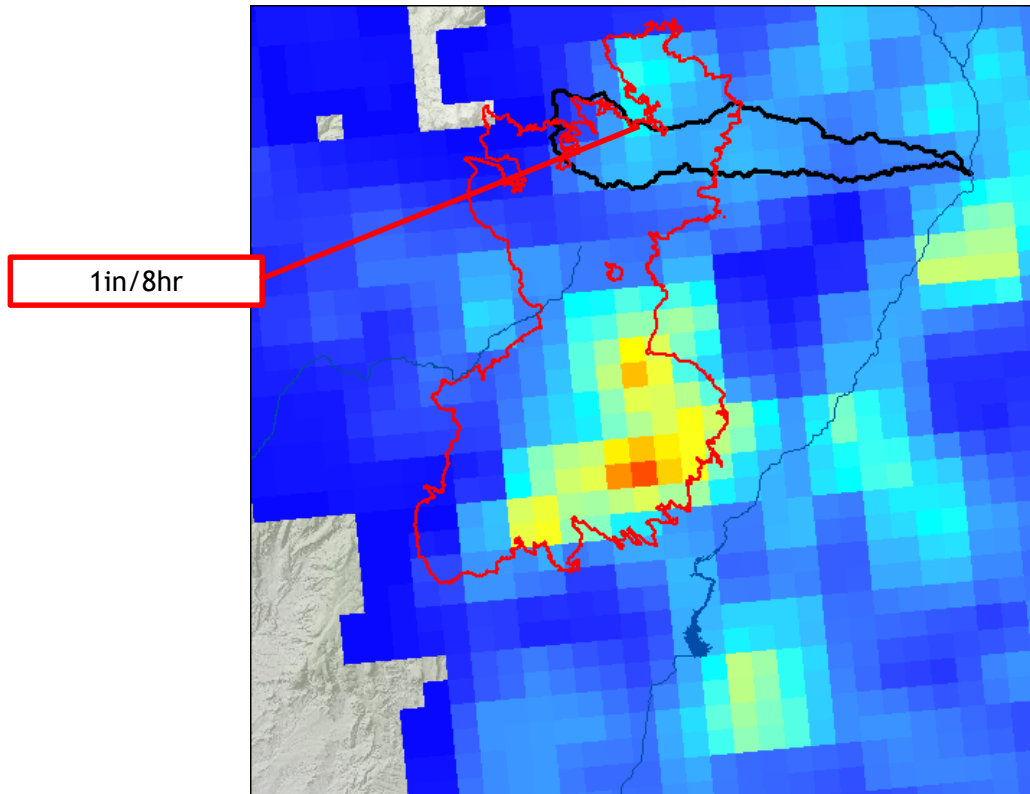
# Gallinas-Porvenir



# Las Conchas- Santa Clara Canyon (Approx. 15,000 acres)



# Santa Clara Canyon August 21, 2011 NEXRAD



# Santa Clara Canyon (10 miles from burn scar)



# Santa Clara Canyon Debris Flow and Flood within Burn Scar





# Santa Clara Aftermath - Firehouse West (pictures courtesy of Santa Clara Pueblo)



# Santa Clara Aftermath - Cattle Guard Location (pictures courtesy of Santa Clara Pueblo)

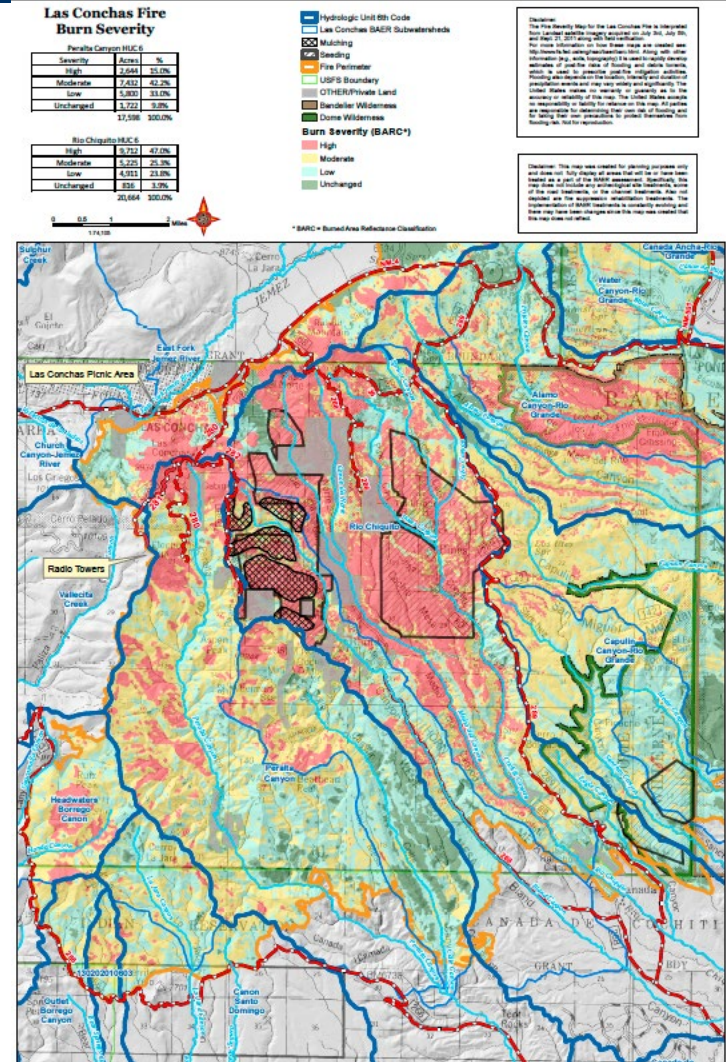


# Santa Clara Post Flood (pictures courtesy of Santa Clara Pueblo)

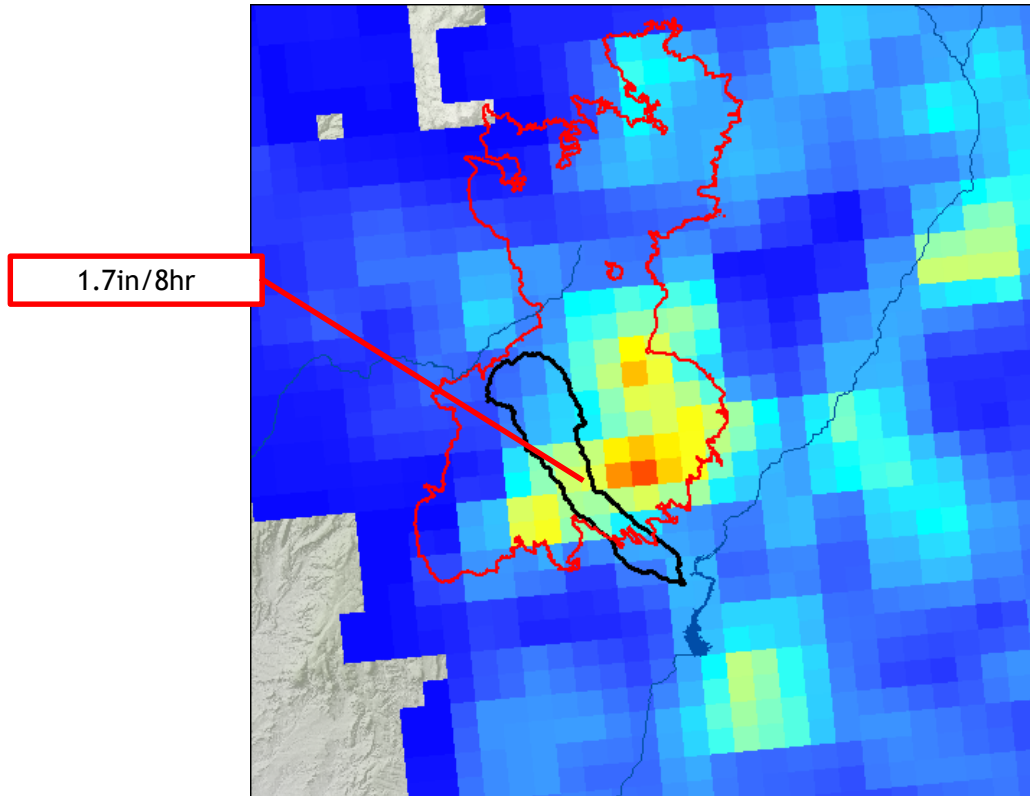


# Las Conchas Fire Cochiti Canyon

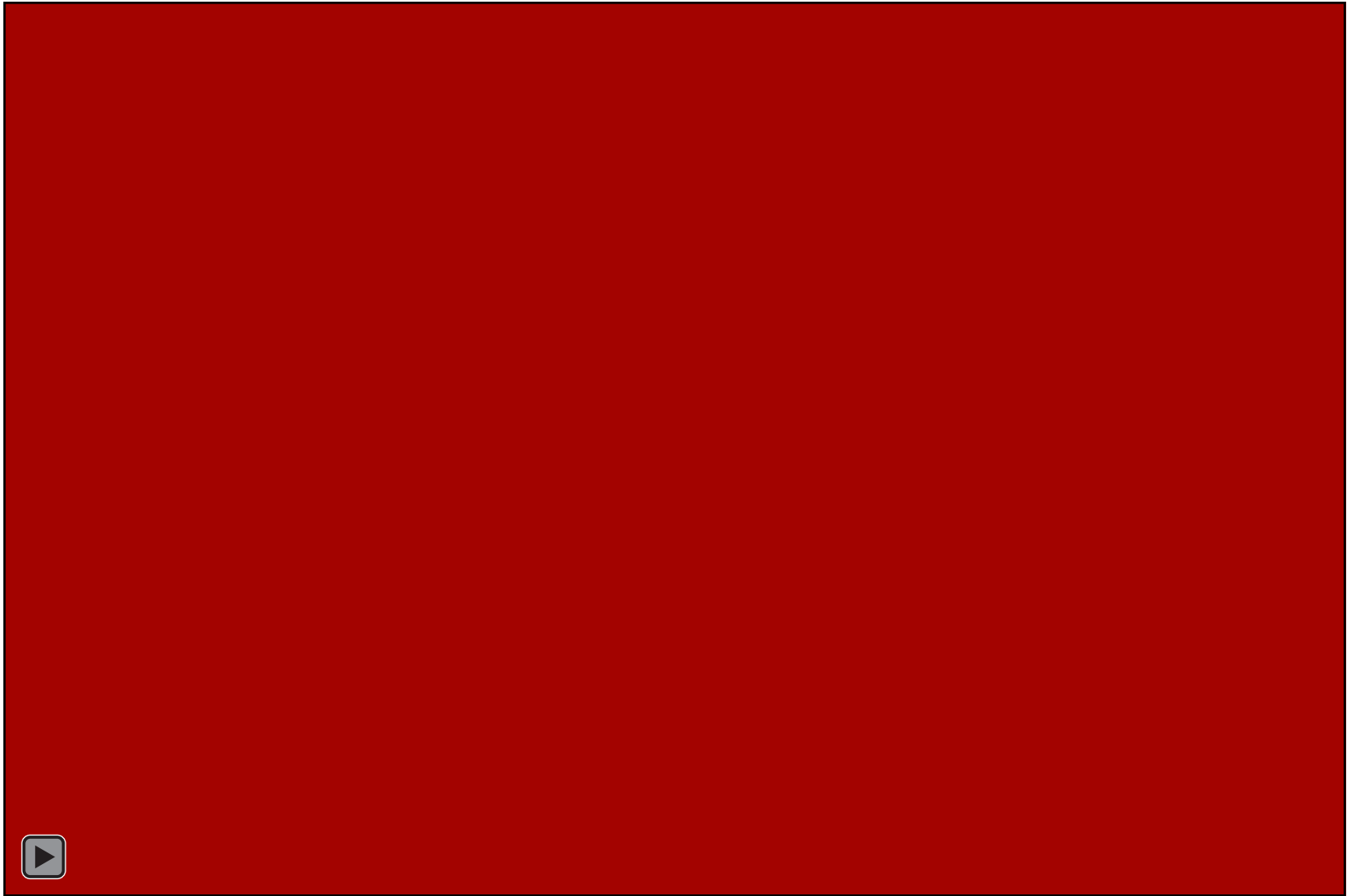
Unburned (3.9%) - 816 acres  
 Low (23.8%) - 4,911 acres  
 Moderate (25.3%) - 5,225 acres  
 High (47%) - 9,712 acres  
**Total = 20,664 acres**



# Cochiti Canyon August 21, 2011 NEXRAD



# Cochiti Canyon Debris Flow (immediately at the edge of the burn scar)



## Gallinas

Approximately 64,000 Acres

## Tecolote

Approximately 51,000 Acres

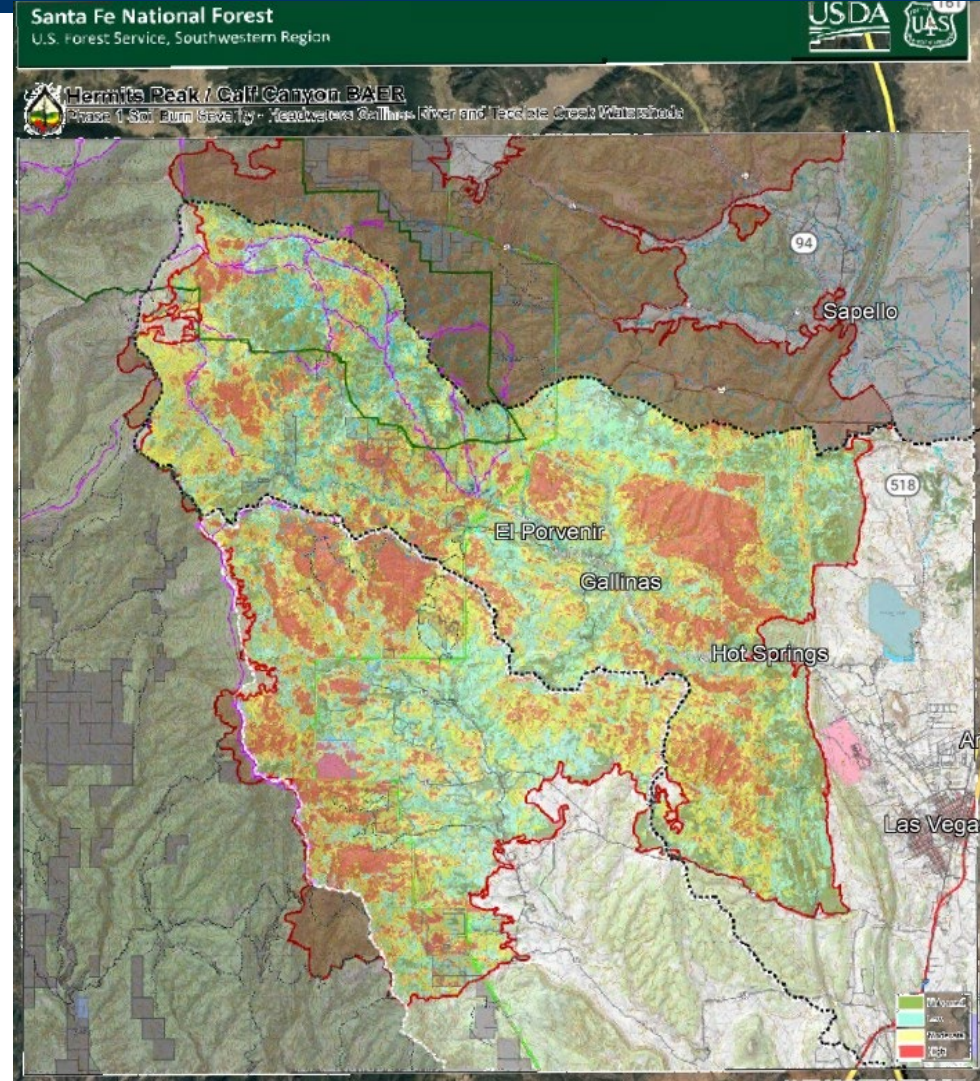
Remember...

Cochiti Canyon-

Approx. 20,000 Acres

Santa Clara Canyon-

Approx. 15,000 Acres



# Gallinas Burned Areas



# Rio La Casa





# Other Watershed Impacts From HPCC



# Other Watershed Impacts



# Other Watershed Impacts



# Post HPCC Measures



# Ongoing and Continued Effort

- MOST IMPORTANT - LOCAL INPUT AND ENGAGEMENT
- Multi-level Efforts (Federal, State, County, Local Governments, Small Coalitions, Acequias, and Locals)
- Collaboration
- Diversity in the watersheds
  - Physical Features
  - Locations
  - Rain Events
  - Social Dynamics and People
  - Jurisdictions
- Ongoing support, funding, and prioritization



Thank you for your time

