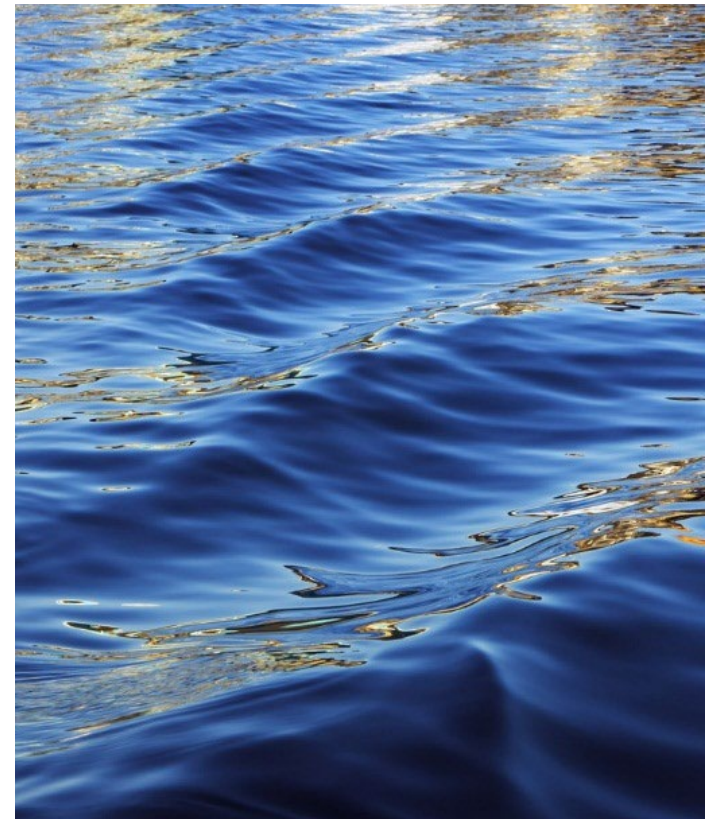




Rio Chama Settlement

Ohkay Owingeh



Local Parties

Ohkay Owingeh

Rio Chama Acequia Association

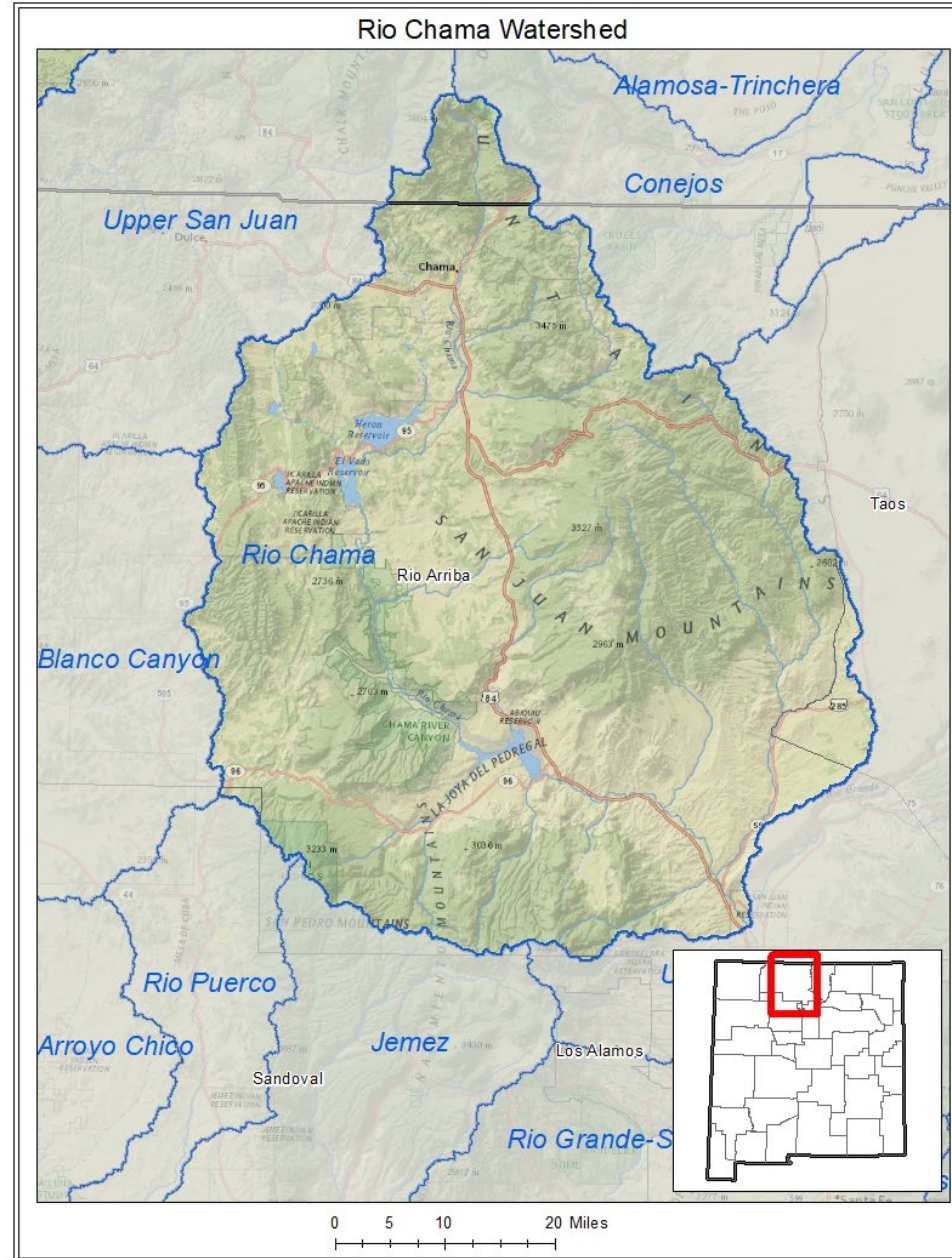
Asociación de Acéquias Norteñas de Rio Arriba

La Asociación de las Acéquias del Rio Vallecitos, Tusas y Ojo Caliente

El Rito Ditch Association

City of Española

State of New Mexico



Basin Facts

- Estimated water use is 97% SW and 3% GW
- Over 32,000 irrigated acres
- Over 475 SW diversions
- Over 32,000 acre-ft of consumptive use
- Over 150,000 acre-ft of annual diversions
- Largest tributary to the Rio Grande

Two Primary Settlement Benefits

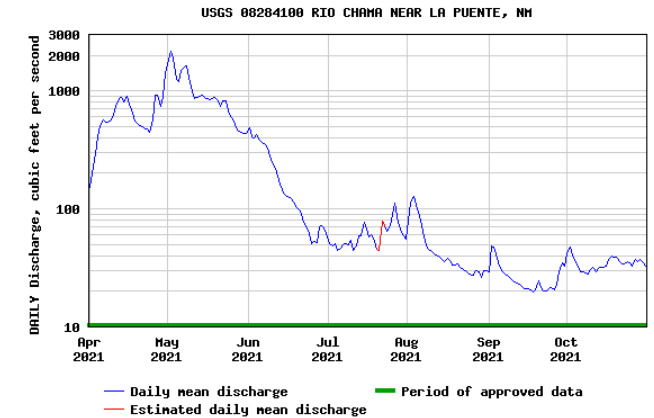
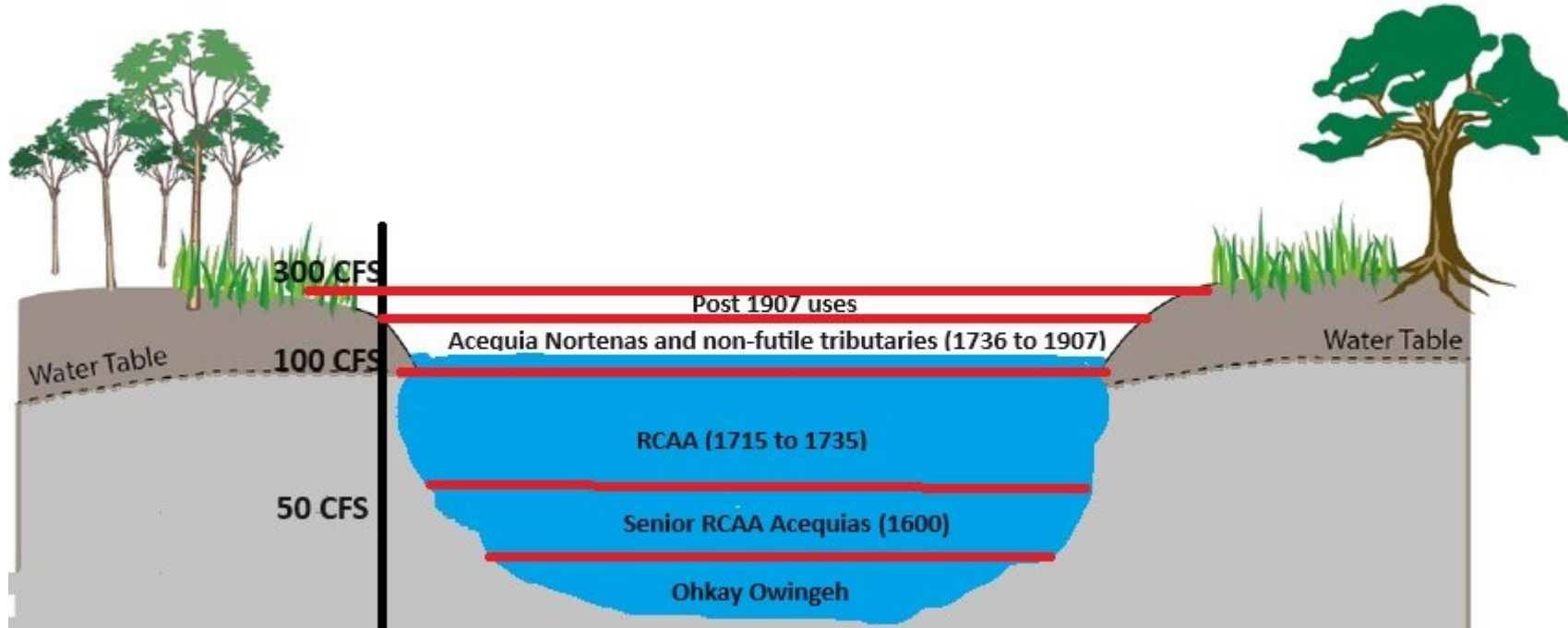
Shortage Sharing

- Stakeholder driven
- Acequia and Pueblo traditional view of water management
- Community and basin resilience
- Guaranteed situational outcomes and actions

Bosque Restoration

- Historical Overbanking Right
- Restoration Right
- Priority water
- Protection of other stakeholders interests

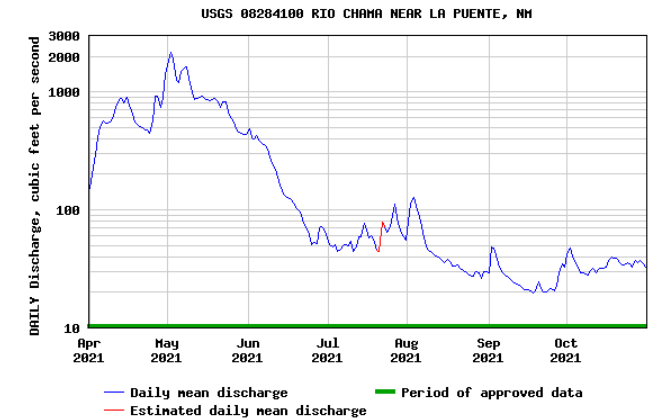
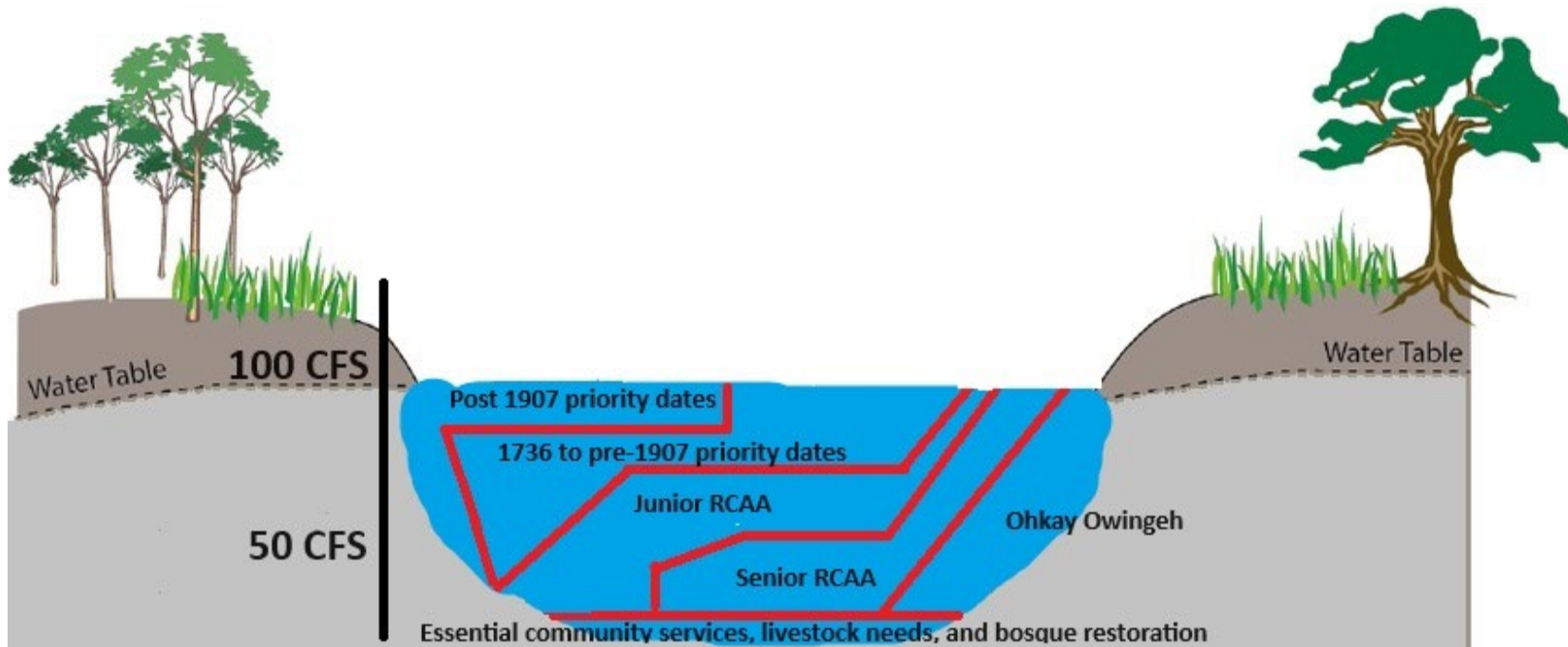
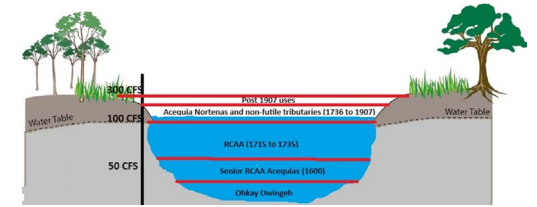
Priority Call



2021 Daily Flow July 1 to November 30		
Median	39	cfs
Average	45	cfs
Low	19.5	cfs

At 50 CFS, approximately 85% of the Chama basin would be out of priority during a priority call including the Village of Chama's municipal surface water diversion

Alternative Priority Call (Shortage Sharing)

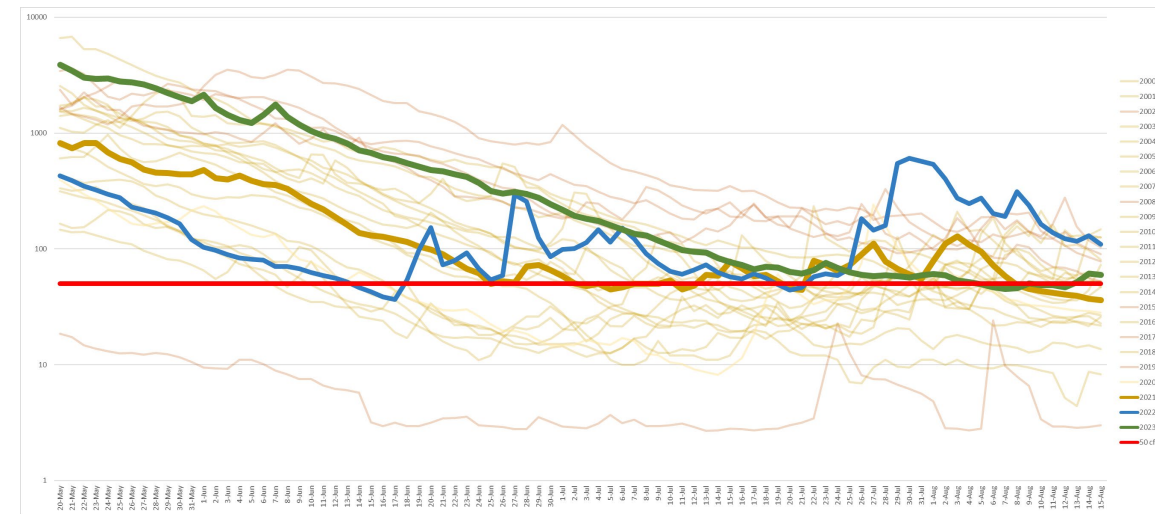


Ohkay Owingeh's Sharing Impact					
	Available Weekly Supply Acre-FT	Priority Call	Weekly Acre-FT delivered to Ohkay Owingeh	Shortage Sharing	Weekly Acre-FT Delivered to Ohkay Owingeh
10 CFS	139	100%	139	11.78%	16
20 CFS	278	50%	139	11.78%	33
30 CFS	416	33%	139	11.78%	49
40 CFS	555	25%	139	11.78%	65
50 CFS	694	20%	139	11.78%	82

- Delayed start date for full main stem curtailment
- Certainty in schedule
- Certainty in participation
- Benefits non-Pueblo junior users most
- Protection of base flows

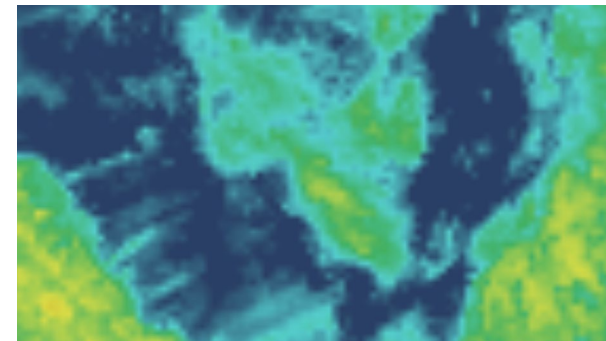
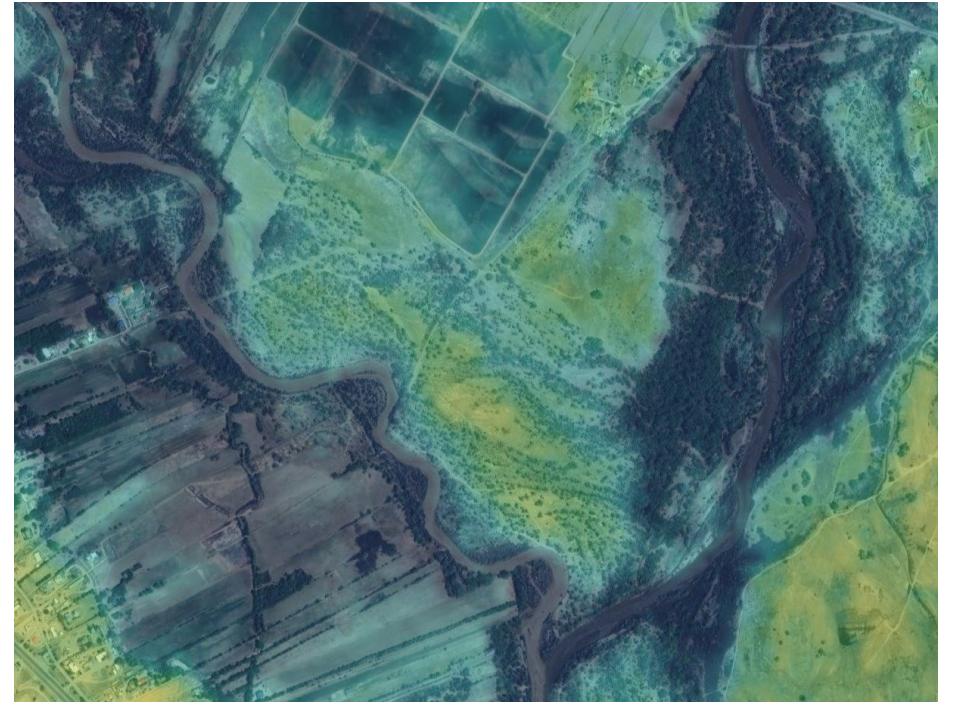
Shortage Sharing Benefits

USGS Rio Chama Near La Puente (above El Vado)



Bosque Restoration

395 acres



Bosque Restoration

Causes of degradation

- Channelization Projects
- Sand and gravel mining
- Dam construction on the Rio Chama
- Invasive species

Impacts of degradation

- Loss of native species
- Increased fire risk
- Disconnected floodplain
- Loss of traditional and cultural resources