

Hydrologic Overview of the Colorado River Basin in New Mexico and History of Interstate Water Obligations

Ali Effati

Colorado River Basin Bureau Chief

State of New Mexico, Interstate Stream Commission

April 15, 2025

Presentation at the 2025 Water Leaders' Workshop,
Silver City, NM



Colorado River Basin: Brief History

2



1922

FEBRUARY
3RD

Water Treaty for the
Utilization of waters of the
Colorado and Tijuana Rivers
and of the Rio Grande

U.S. and Republic of Mexico



1948

NOVEMBER 24TH

Colorado River Compact

Seven States



OCTOBER 11TH

Upper Colorado River
Basin Compact

Four Upper Division States



Colorado River Basin: Apportionments

3

□ 1922 Compact

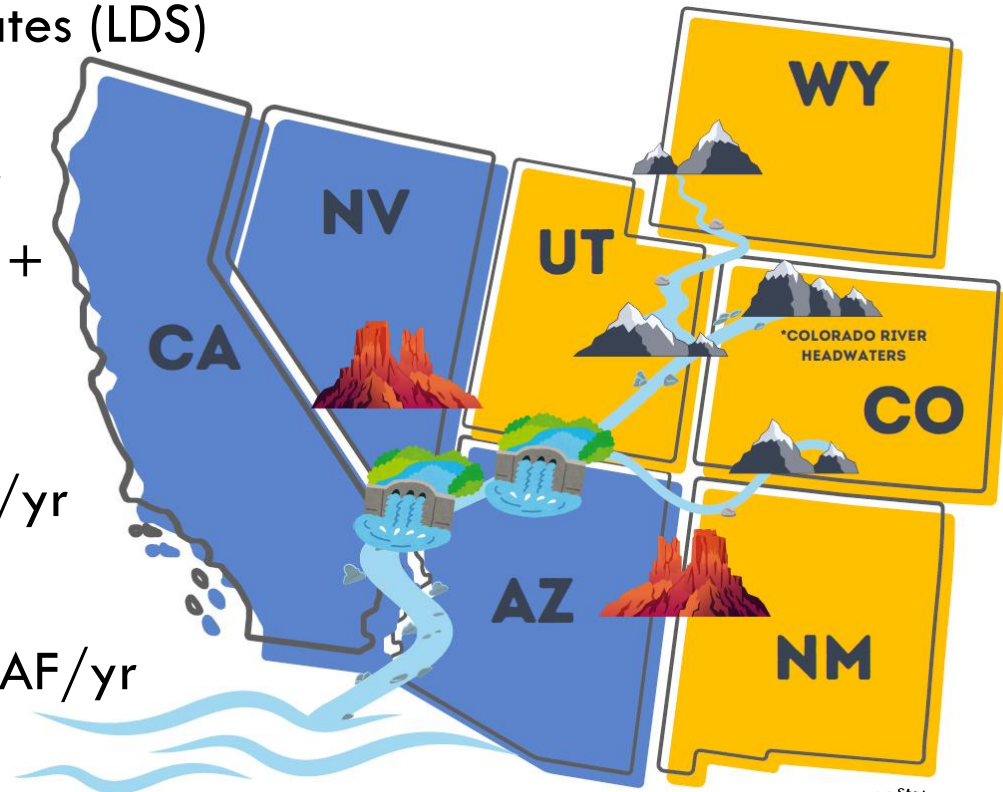
- ▣ Divides the basin to Upper Division States (UDS), Lower Division States (LDS)
- ▣ Lee Ferry, AZ the dividing point
- ▣ UDS is apportioned 7.5MAF/yr
- ▣ LDS is apportioned 7.5MAF/yr + 1MAF/yr

□ 1944 Treaty

- ▣ Mexico is apportioned 1.5MAF/yr

□ 1948 Compact

- ▣ UDS are apportioned the 7.5MAF/yr based on percentages
- ▣ AZ is apportioned 50KAF/yr



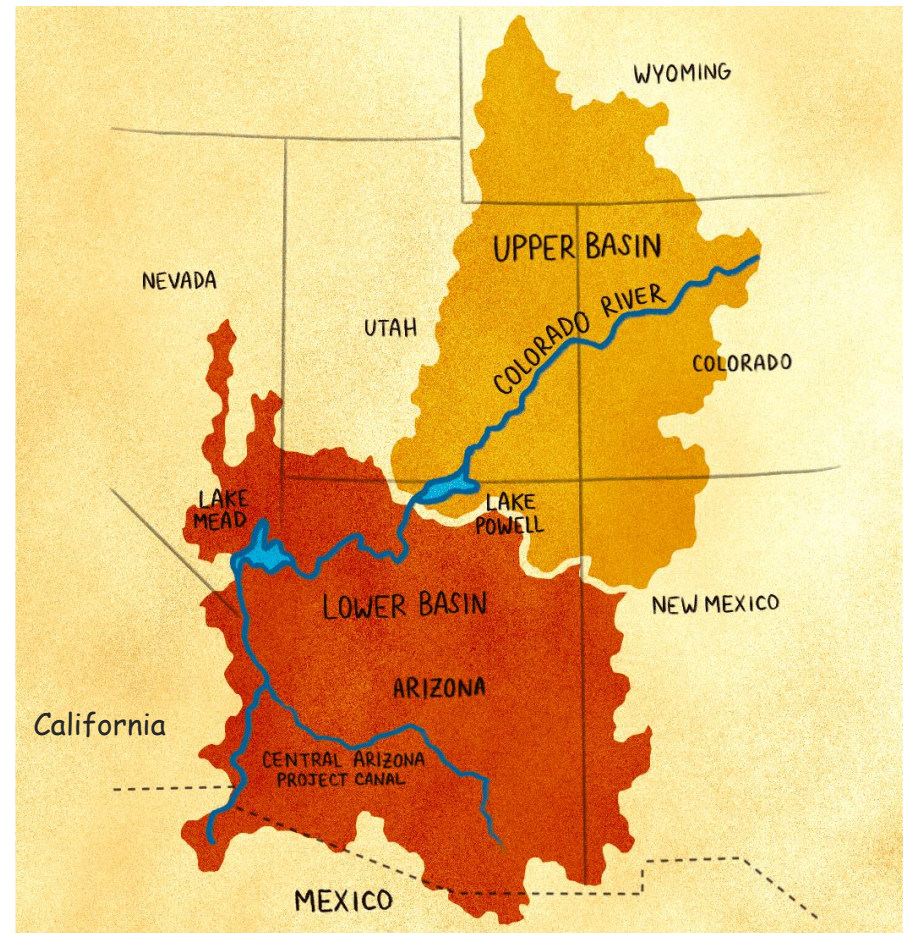
Graphic courtesy of the Colorado Water Conservation Board



Colorado River Basin in NM

4

- NM one of the 3 states that have both Upper Basin and Lower Basin
- NM is an Upper Division State under the 1948 Compact
 - ▣ Member of the Upper Colorado River Commission
 - ▣ NM is apportioned 11.25% of 7.5MAF
 - Use all on Upper Basin tributaries to the Colorado River
- NM is NOT a Lower Division State, but has limited share on the waters of the tributaries to the Colorado River in its Lower Basin



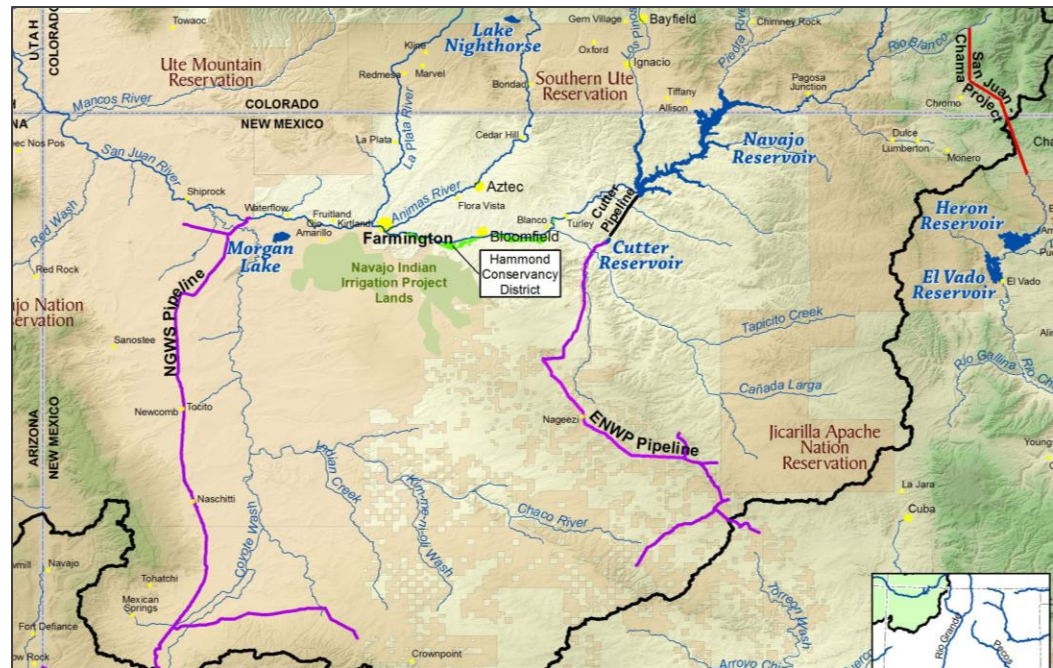
NM's Upper Basin

5

- San Juan: Major tributary to the Colorado River above Lee Ferry + its tributaries (join the San Juan in NM):
 - ▣ Navajo, Little Navajo, Blanco (headwaters in CO)
 - Points of Diversion for San Juan-Chama Project

- ▣ Animas

- ▣ La Plata



NM's Lower Basin

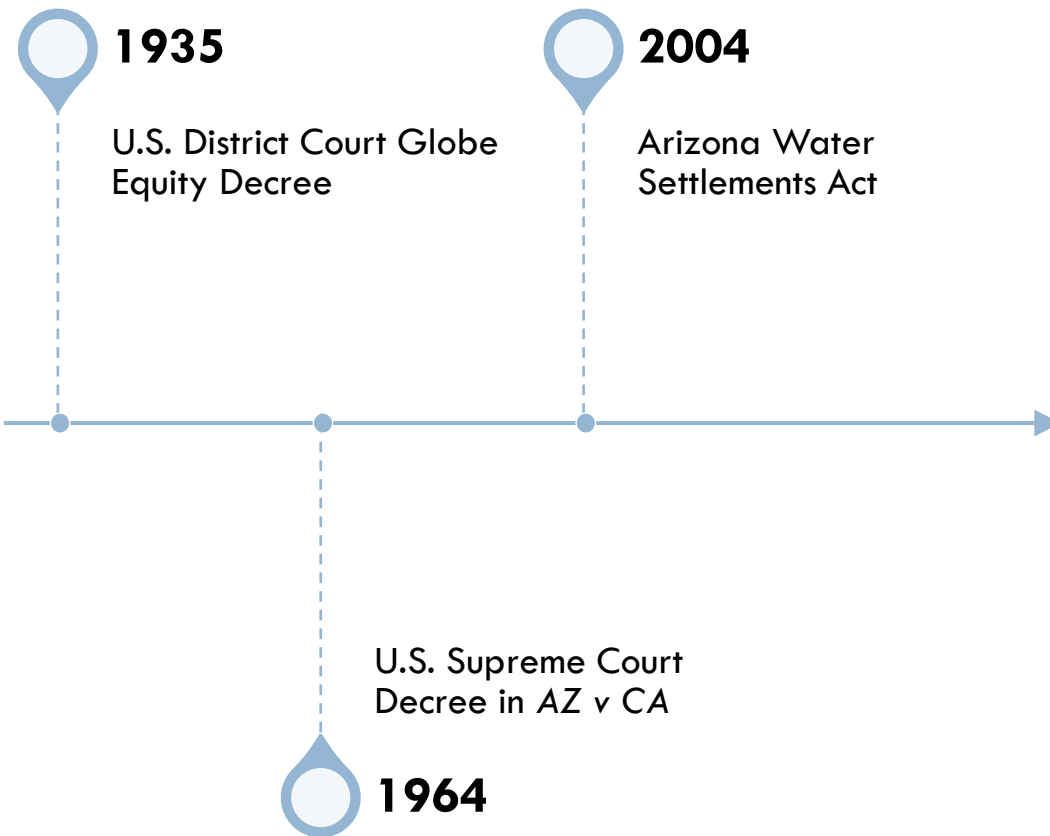
6

- Gila: Major tributary to the Colorado River below Lee Ferry + its tributaries (join the Gila in AZ):
 - ▣ San Francisco
 - ▣ San Simon
- Ephemeral tributaries to the Little Colorado River:
 - ▣ Rio Puerco
 - ▣ Zuni River



NM's Lower Basin: Law of the Land

7



1935 Globe Equity Decree

8

- U.S. District Court Decree in U.S. v. Gila Valley Irrigation District, et al
- Controls use of the waters of the Gila River in the reach from above Virden, NM to its confluence with the Salt River west of Phoenix.
- Administered by the Gila Water Commissioner appointed by U.S. District Court in AZ, based on the amount stored in San Carlos Reservoir in AZ
- Affects Virden Valley in Hidalgo County, NM

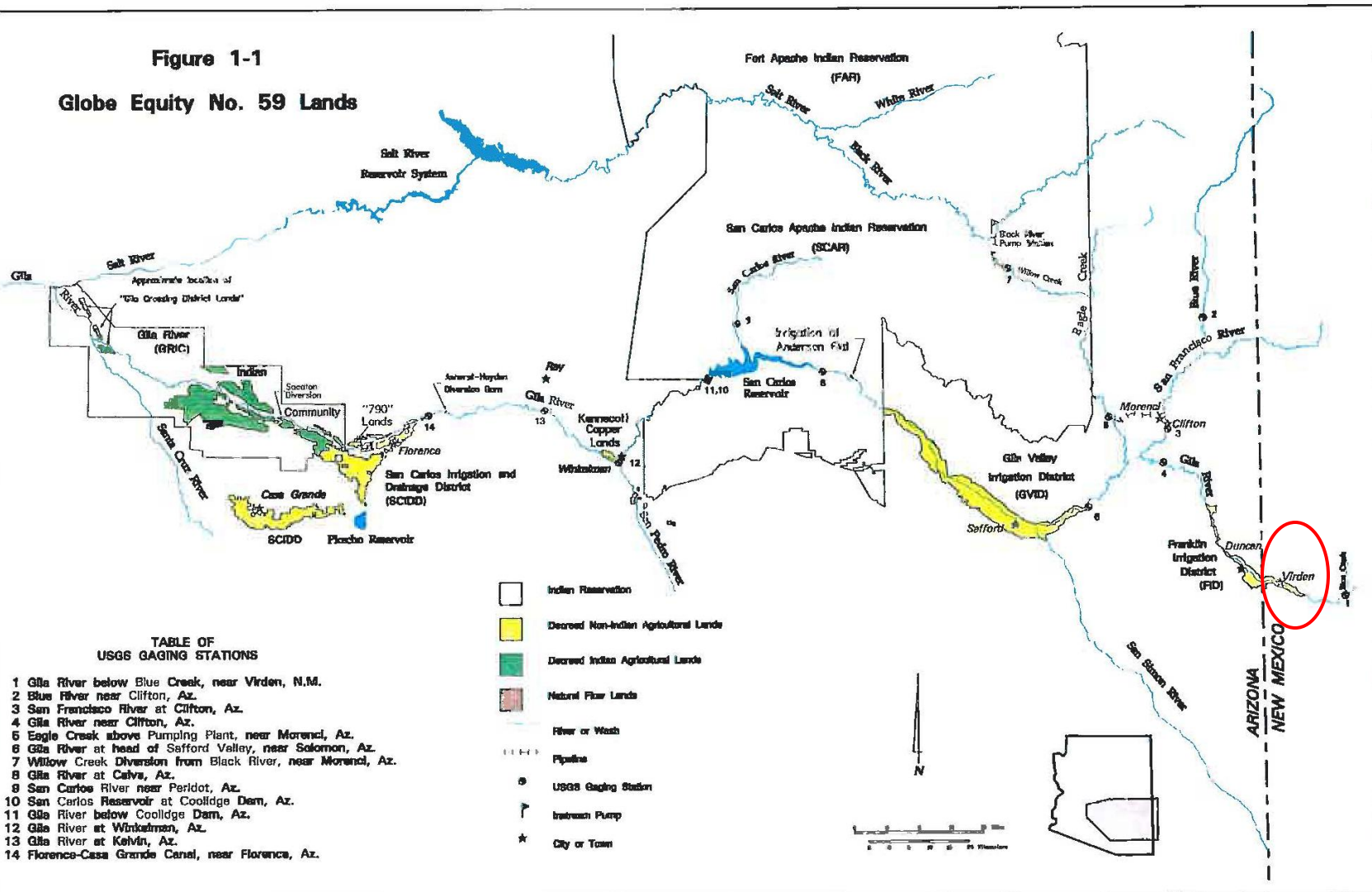


1935 Decreed Area in NM

9

Figure 1-1

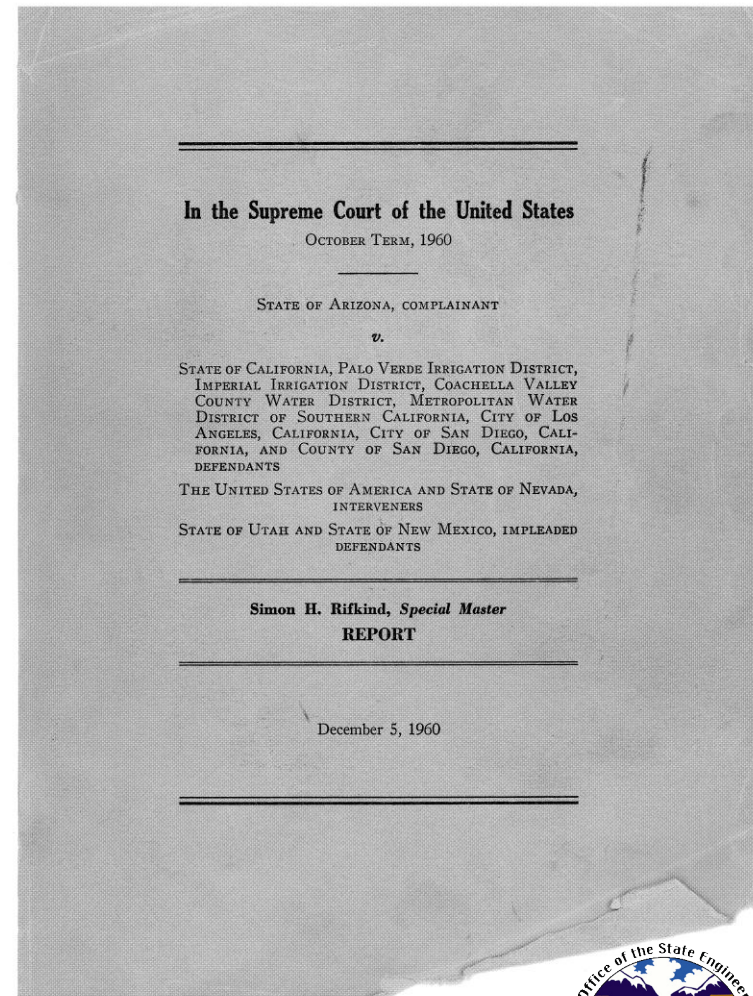
Globe Equity No. 59 Lands



1964 U.S. Supreme Court Decree

10

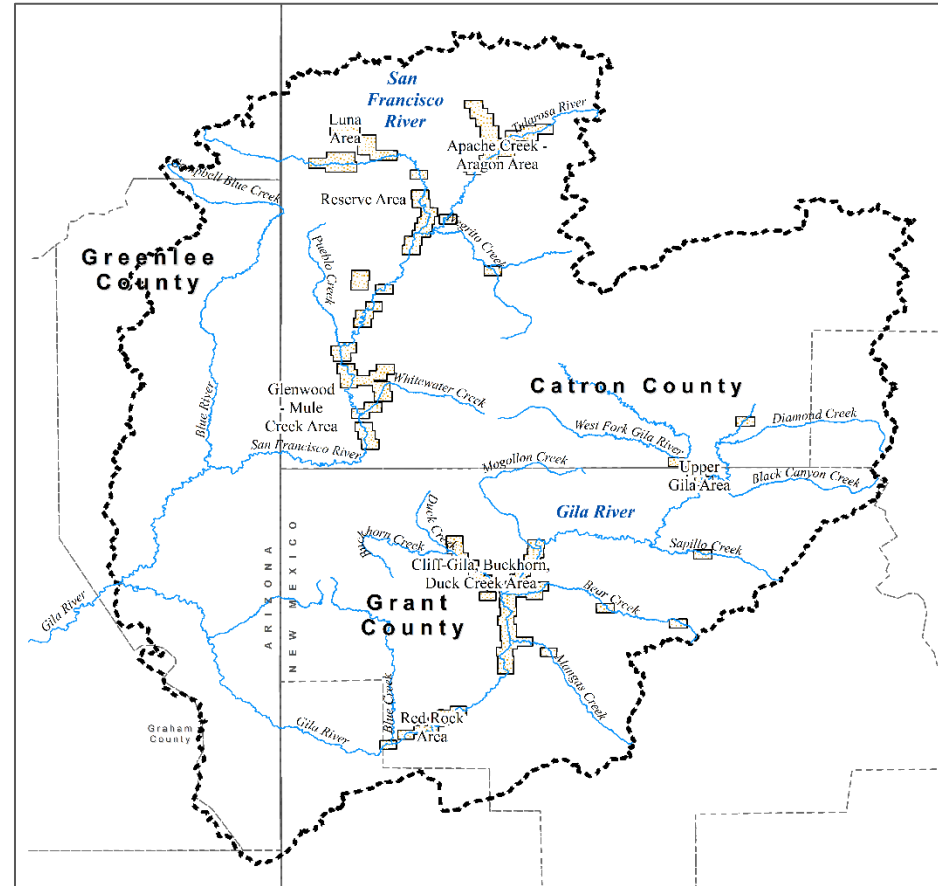
- Special Master decision adopted by the Court in AZ v. CA
 - ▣ Filed by AZ to apportion Colorado River in the Lower Basin
 - ▣ NM joined into the case because Gila River is a tributary to the Colorado River in Arizona and its headwaters are in NM



1964 Decreed Areas in NM

11

- Limits irrigated acreage and consumptive use in the Gila, San Francisco, and San Simon basins in NM
- Affects 9 areas in Catron, Grant, and Hidalgo Counties
- Requires NM to prepare and maintain annual records of irrigated acres, consumptive uses, and diversions



The San Simon decreed area not depicted on this map.

2004 Arizona Water Settlements Act

12

- ❑ Major Indian water rights settlement in AZ
- ❑ NM joined into the settlement because Gila is a tributary to the Colorado River and its headwaters are in NM
- ❑ Provides non-reimbursable funding to NM
- ❑ U.S. Congress tasked the State of NM, through the ISC, with certain roles and decisions related to water supply projects in Southwest New Mexico Planning Region

2004 AWSA Area in NM

13



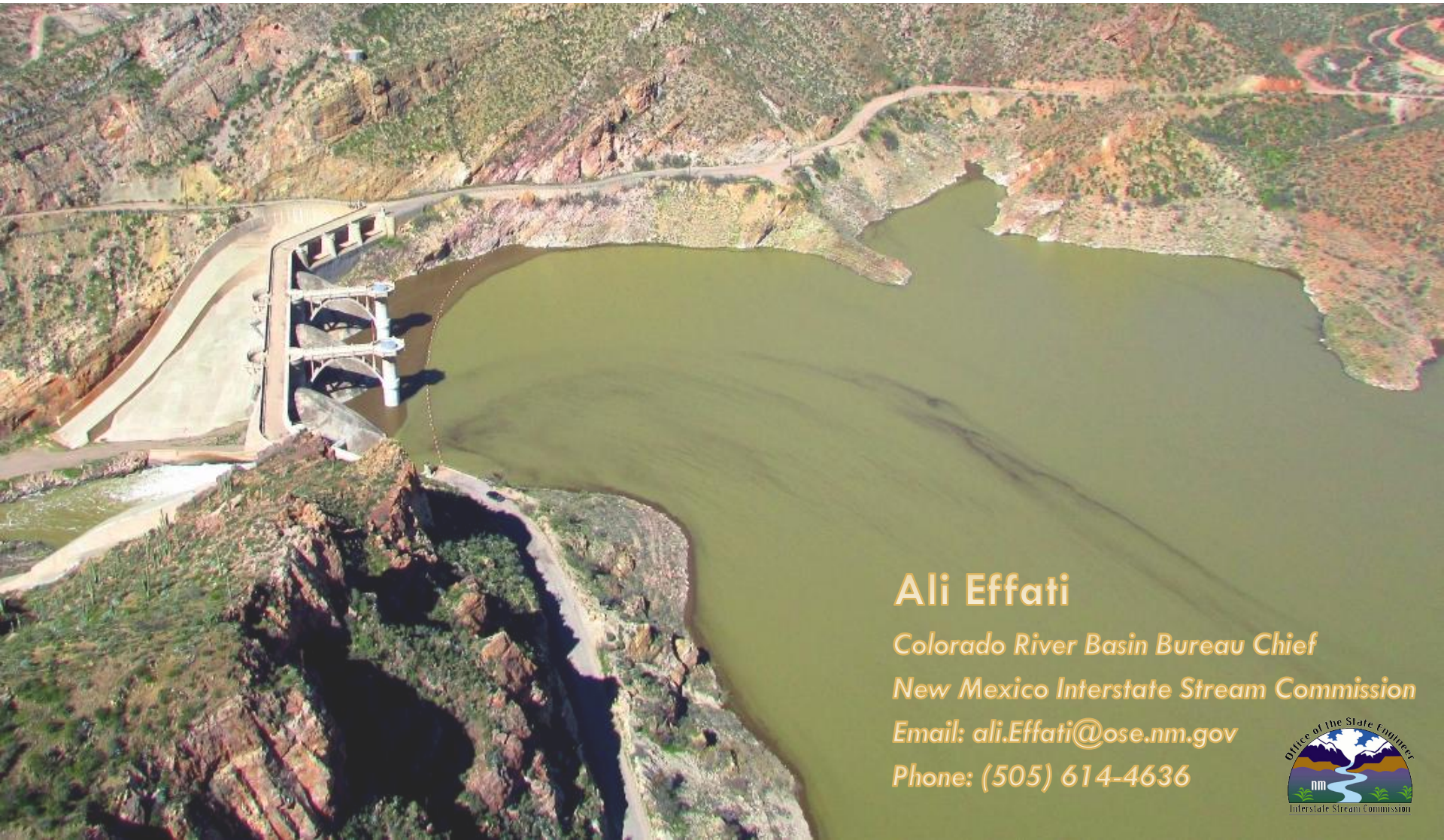
Southwest NM Planning Region

14

- Four counties of Catron, Grant, Hidalgo, and Luna
- Several hydrologic basins
 - ▣ Lower Colorado River sub-basins (Little Colorado, Gila, San Francisco, San Simon)
 - ▣ Closed sub-basins such as Mimbres
- Proposed “Lower Colorado Council” under the Water Security Planning Act Discussion Draft Rule and Guidelines



Questions?



Ali Effati

*Colorado River Basin Bureau Chief
New Mexico Interstate Stream Commission*

Email: ali.Effati@ose.nm.gov

Phone: (505) 614-4636

