



New Mexico Environment Department

Regulating Groundwater Quality in the Region

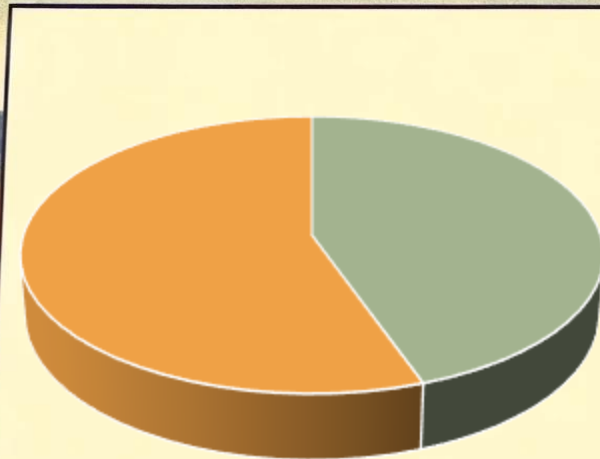
Jason Herman, Program Manager

April 16, 2025





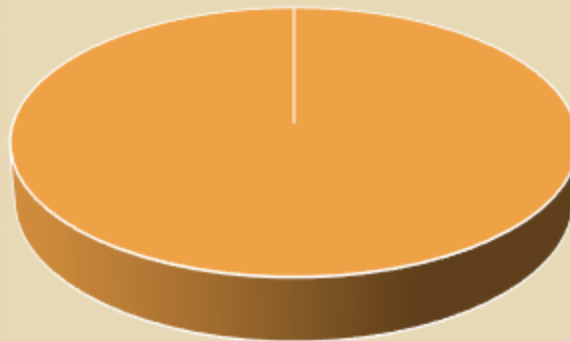
GROUNDWATER RELIANCE IN NEW MEXICO



- Surface Water 44.6%
- Ground Water 55.4%



Groundwater Reliance in Grant County



- Surface Water 0%
- Ground Water 100%



Groundwater (GW) Regulation Timeline



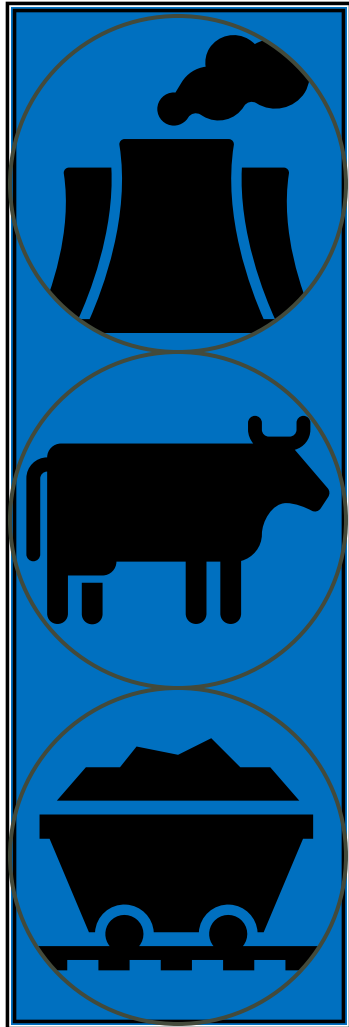


Groundwater (GW) Protection Regulations

- ❑ **20.6.2 NMAC:** Ground and Surface Water (SW) Protection Regulations
- ❑ **20.6.6 NMAC:** GW Protection – Dairy Facilities Supplemental Permitting Requirements
- ❑ **20.6.7 NMAC:** GW Protection – Copper Mine Facilities Supplemental Permitting Requirements
- ❑ **20.6.8 NMAC:** GW & SW Protection – Water Reuse Supplemental Requirements



Current GW Protection Programs

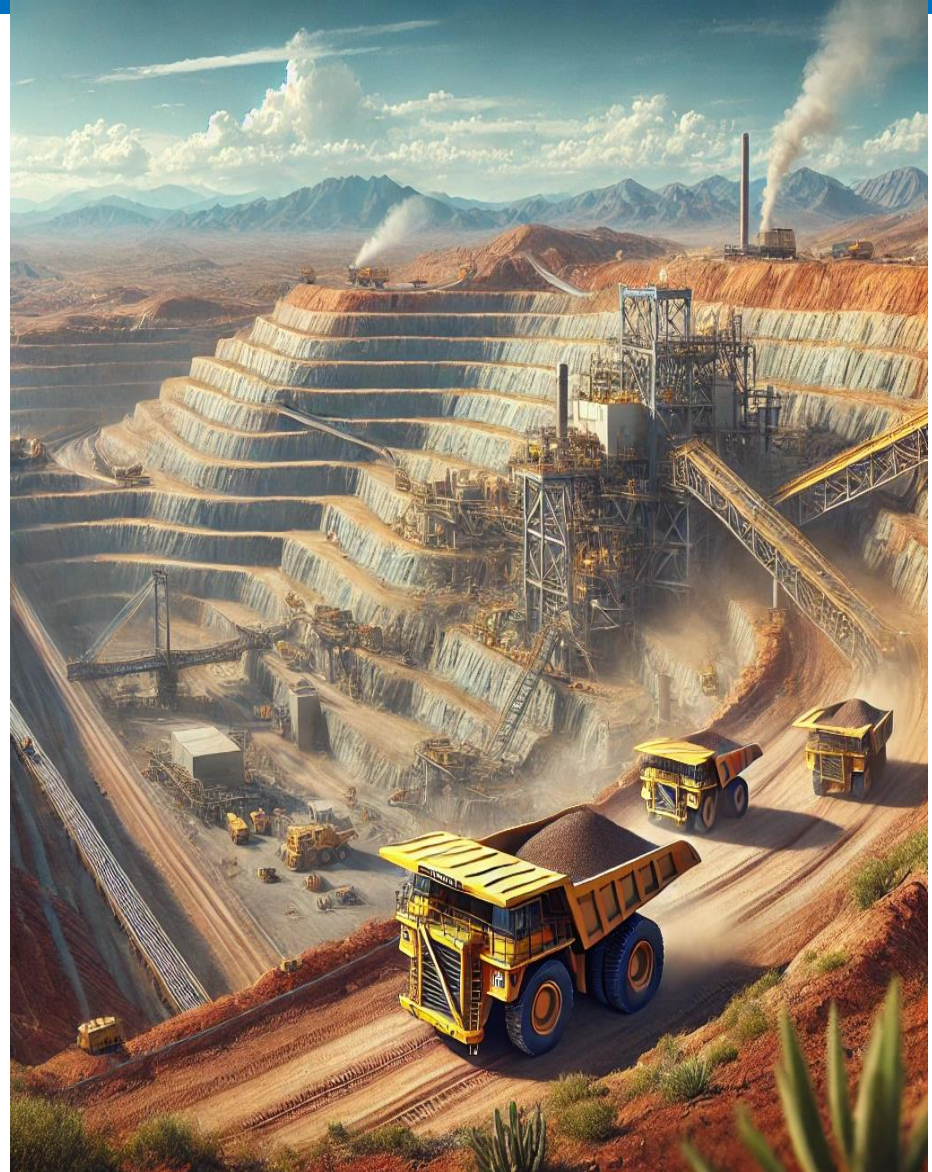


- **Pollution Prevention**
- Domestic, industrial, and reuse
 - ▣ 456 active permits
- **Agricultural Compliance**
 - ▣ Dairy, chile, and cheese processing
 - ▣ 209 active permits
- **Mining Environmental Compliance (MECS)** Copper, potash, salt, uranium, molybdenum
 - ▣ 46 active permits



Mining Permitting in the Region

- ❑ The Mining and Environmental Compliance Section (MECS) conducts most NM Mining permitting
- ❑ Oversees 46 active mining permits & many unpermitted actions
- ❑ Implement Mining Act and Non-Coal Mining rule
- ❑ Coordinates environmental protection needs with Mining and Minerals Division
- ❑ Enforce environmental standards





Mining Permits in Grant County

DP-1340 Chino Closure

DP-213 Chino Concentrator,
Hurley Ind. & Pipelines

DP-376 Chino Lampbright
Leach System

DP-1568 Chino Lee Hill
Stockpile

DP-459 Chino North Pit Leach
& Main Pit

DP-214 Chino Old Tailings &
Lake One

DP-591 Chino SX - EX and
Reservoirs 6 & 7

DP-484 Chino Tailing Pond 7

DP-526 Chino Whitewater
Leach System

DP-1403 Continental Mine -
Cobre Closure

DP-1056 Continental Mine -
Cobre Fierro/Humbolt Leach &
SX/EW

DP-181 Continental Mine -
Cobre Main Pit, Stockpiles &
Tailings

DP-1236 Tyrone Little Rock
Mine

DP-396 Tyrone 1C Waste Rock
Stockpile

DP-435 Tyrone 2A Leach
Stockpile

DP-1341 Tyrone Closure

DP-455 Tyrone Gettysburg &
Savannah Leach Systems

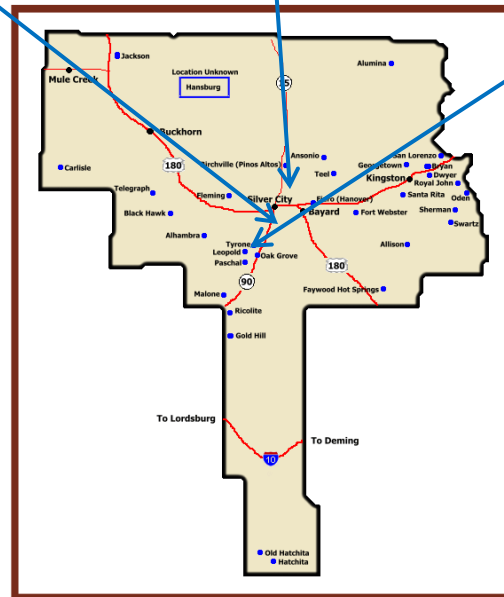
DP-363 Tyrone Leach
Stockpiles 1A & 1B

DP-896 Tyrone No. 1 Leach
Stockpile

DP-166 Tyrone No. 2 Leach
System

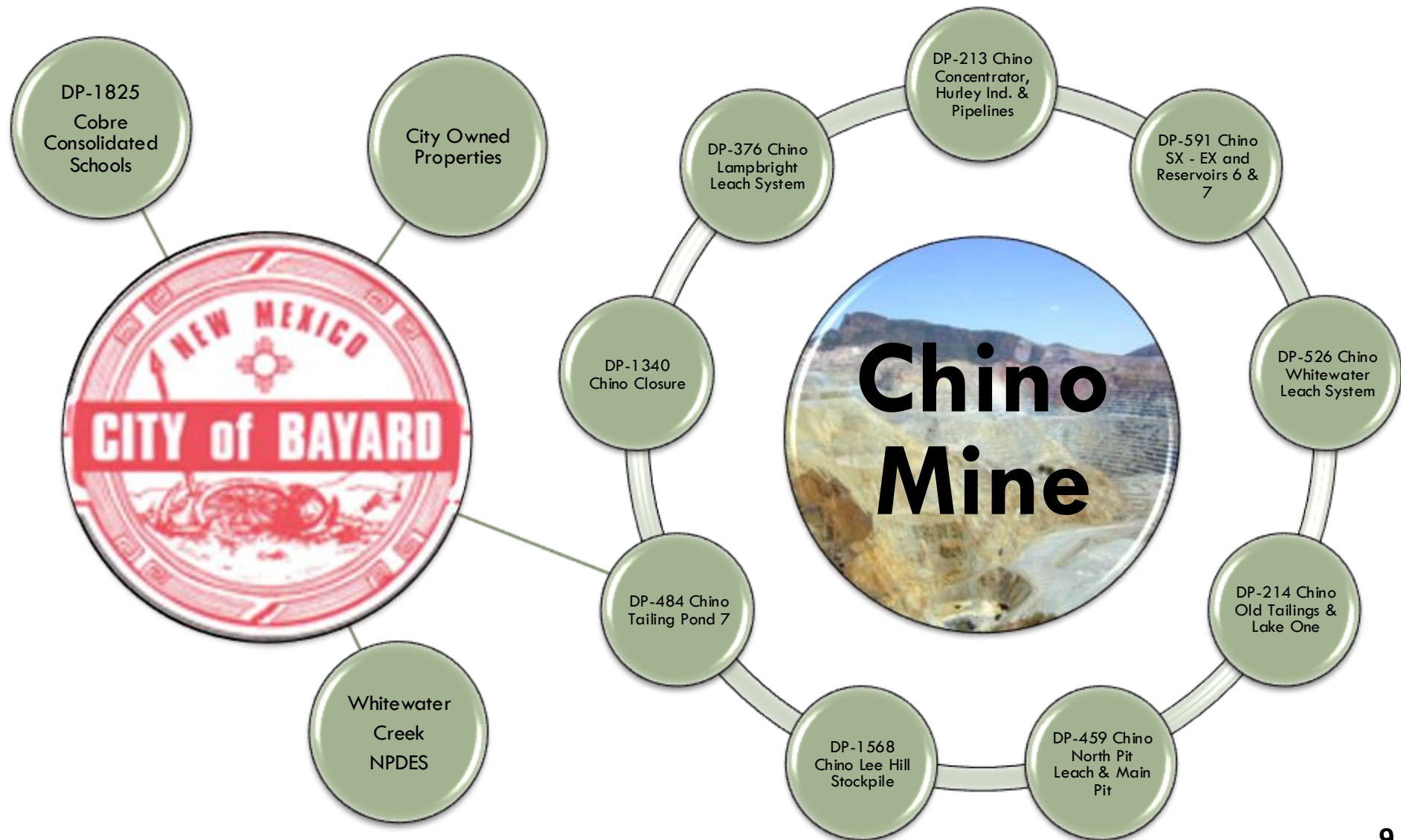
DP-286 Tyrone No. 3 Leach
Stockpile

DP-27 Tyrone Tailing





Interconnected Permitting



Contact Information

Jason G. Herman

Pollution Prevention Section Program Manager
New Mexico Environment Department
Ground Water Quality Bureau
(Ph) 575-649-3871
Jason.Herman@env.nm.gov