



Lincoln County Wildland Urban Interface (WUI) Barrier Project

Reducing wildfire risk and improving community protection

This project creates a protective buffer between wildland areas and our communities to reduce wildfire risk and improve firefighter access.



WHAT IS A WUI BARRIER?

A Wildland Urban Interface (WUI) barrier is a strategically thinned area between dense vegetation and **homes**.

- ✓ Designed to slow the spread of **wildfire**
- ✓ Helps reduce **fire intensity** near structures.



WHAT WORK IS BEING DONE

- ✓ **Vegetation thinning**
- ✓ Removing ladder fuels
- ✓ Spacing between trees & brush
- ✓ Improving access for fire apparatus



WHY THIS MATTERS

- ✓ **Slows fire spread** toward homes
- ✓ Reduces flame length and **intensity**
- ✓ Provides safer working conditions for firefighters
- ✓ Increases the chance of structure protection



357 Acres Completed



900 Acres Under Contract



\$1.5 Million Spent of \$5 Million in Grants

7 Crews actively working across Lincoln County



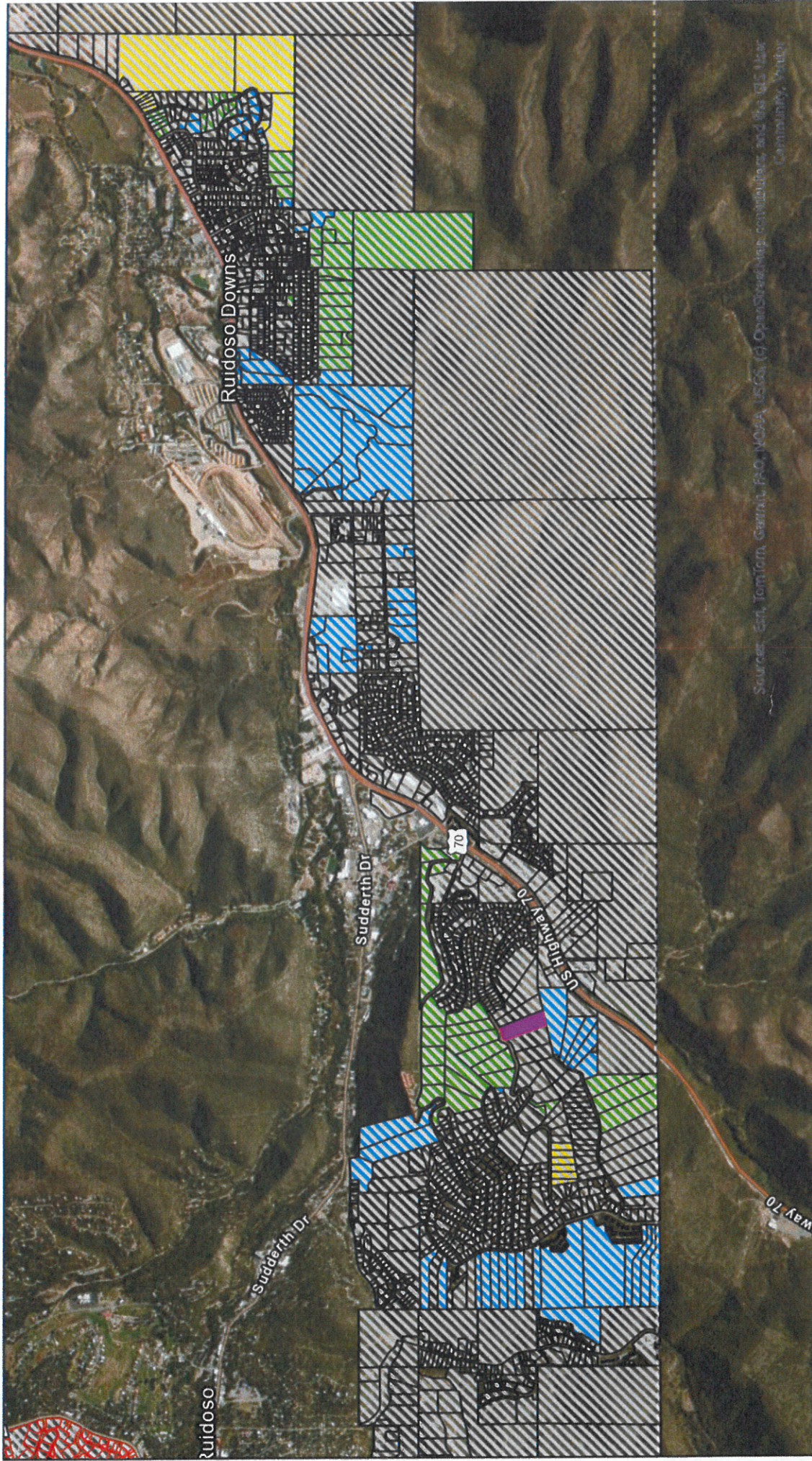
WHAT YOU CAN DO

- ✓ **Maintain** defensible space around your home
- ✓ **Remove** debris and ladder fuels
- ✓ **Stay informed** and signed up for alerts

LincolnReady.com | 575-336-8600



Lincoln County WUI Buffer Project



Source: Esri, TomTom, Garmin, FAO, NOAA, USGS, © OpenStreetMap contributors, and the GIS User Community, 2019

thinning_project_phase2 2 view

- PROGRESS
- PROCESSING
 - CONTACT IN PROGRESS
 - UNDER CONTRACT
 - COMPLETE
 - PROCESSING
 - CONTACT IN PROGRESS
 - UNDER CONTRACT
 - COMPLETE