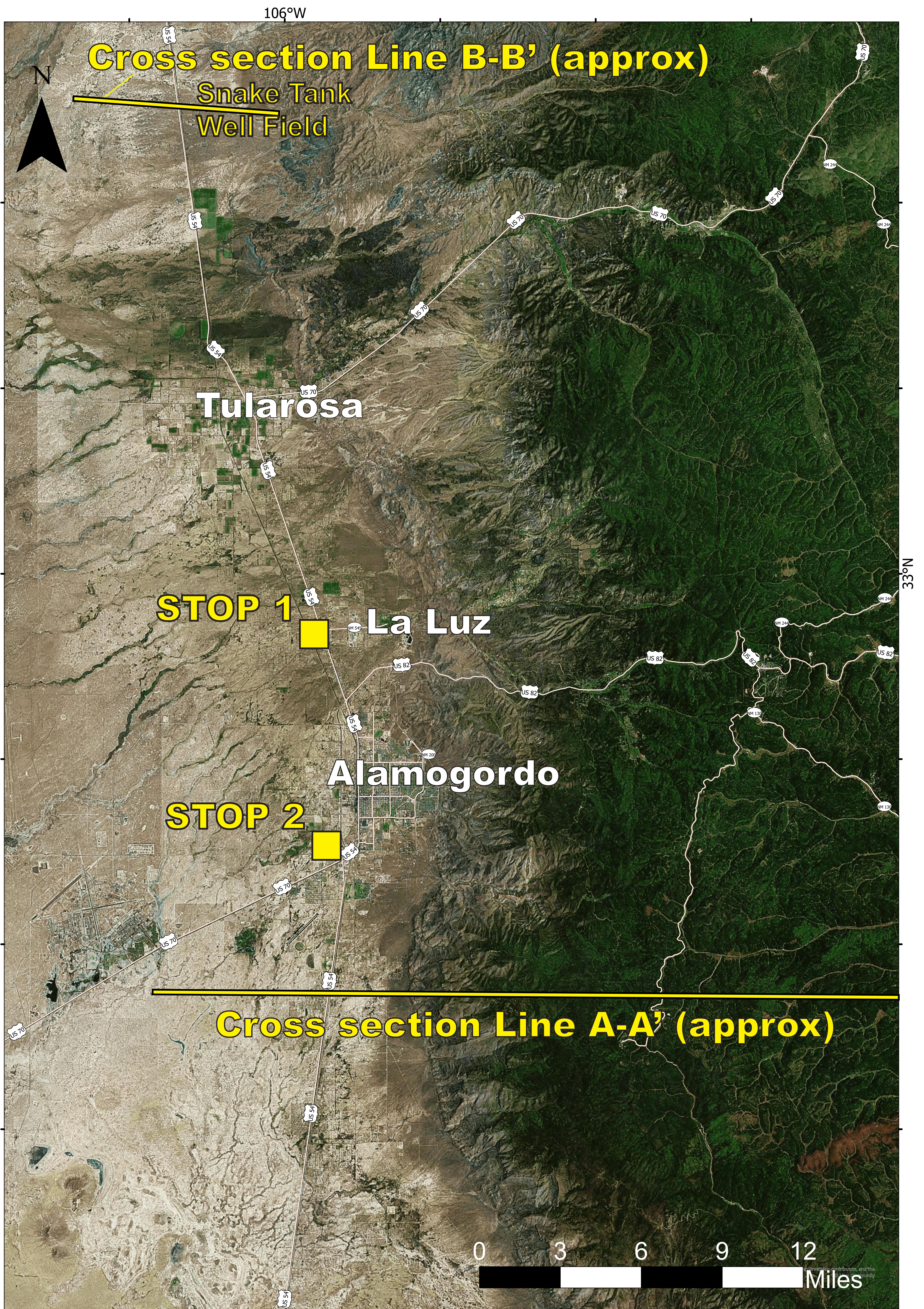
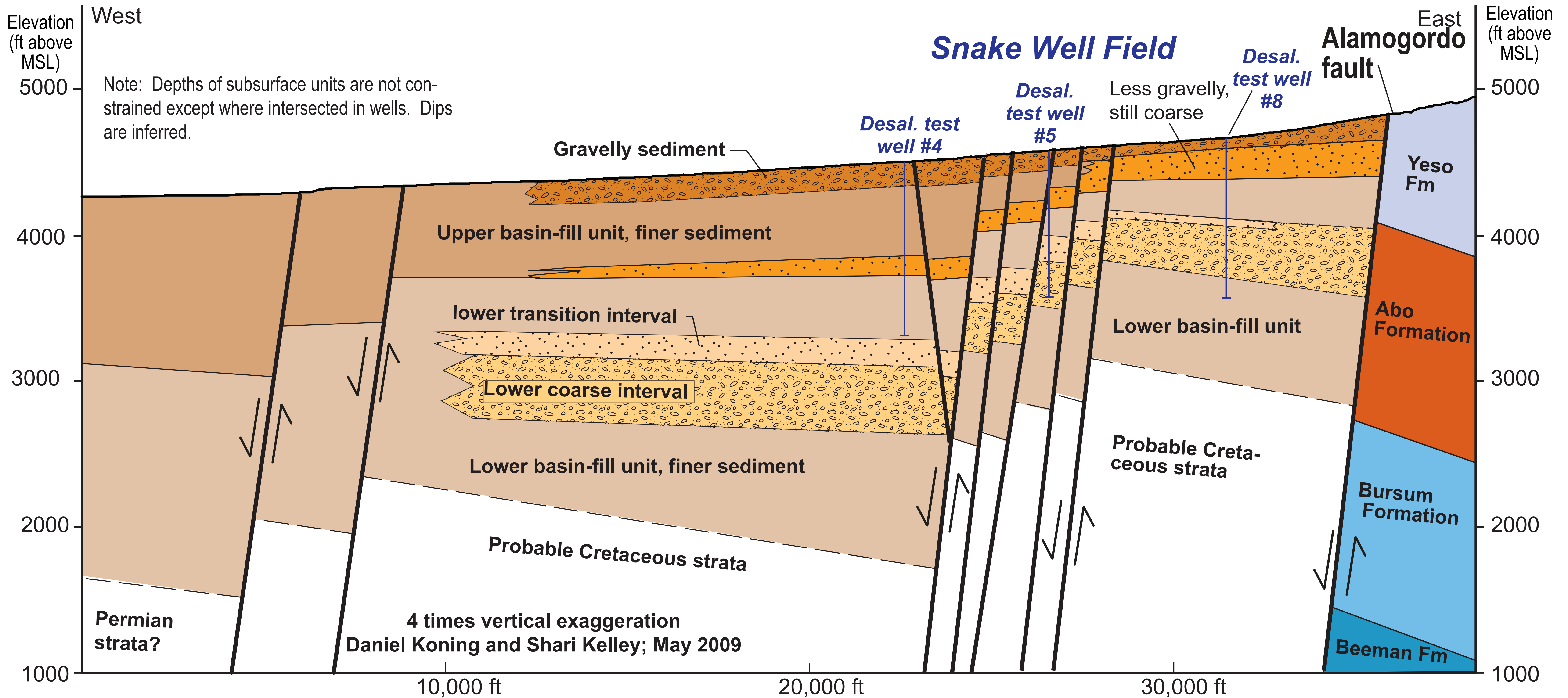


Alamogordo-Tularosa area



B**VIEW TO THE NORTH****B'**

- | | |
|-------------------------|--|
| Upper Basin Fill | Uppermost gravelly sediment -- Sand, sandy clay, and interbedded gravel to the west, grading eastward into a gravel. Weakly consolidated. |
| | Coarser sediment -- Interval characterized by sandy-gravelly channel-fills intercalated with clayey sediment. Channel-fills become more gravelly to the east. |
| | Finer sediment -- Interbedded clay-silt, silty sandy clay, and gravel beds. Sandy clay dominates to the west. |
| Lower Basin Fill | Lower transition interval -- Interbedded coarse-channel-fills and fine-grained sediment |
| | Lower coarse interval -- Sand and gravel, locally clayey; coarsens upwards. Consolidated and probably cemented to some extent. |
| | Finer and consolidated sediment -- Interbedded clay-silt, silty sandy clay, and coarse channel-fills of sand or sandy gravel. Consolidated and likely cemented to some extent |

