

# Menefee Mining Co.

---

EARTHGREEN PRODUCTS INC.



---

# Humate – Geology

## Black Spring Mine Humate Occurrence

–

- Weathered or ‘Oxidized’ Coal in the uppermost Coal Bed in the Cretaceous Fruitland Formation
- Commonly ‘Preserved’ by Overlying Sandstone Tongue of the Pictured Cliffs Sandstone
- Usually, a Transition to Coal at Depth
- Coal Resource In Area Assessed in the 1970s and 1980s



Section 5 Prior Exploration (limited shallow humate)

Black Spring Mine (Current Operations)

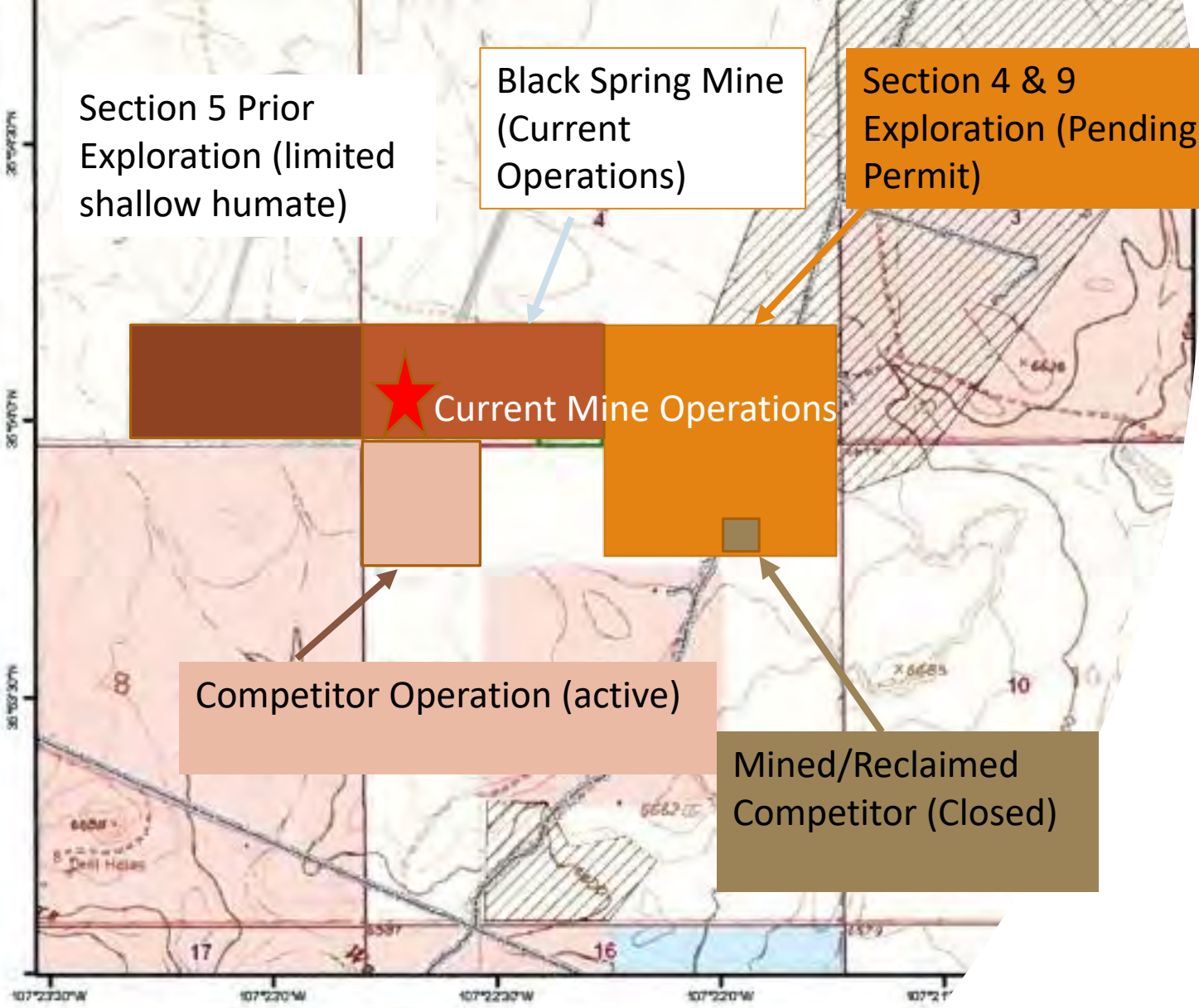
Section 4 & 9 Exploration (Pending Permit)

Current Mine Operations

Competitor Operation (active)

Mined/Reclaimed Competitor (Closed)

# Property Map of Black Spring Mine Area



**Legend**

|  |        |
|--|--------|
| Project Area (80+ acres)               | BLM    |
| Haul Road (1 770 feet)                 | Tribal |
| 10-acre Permit Area                    | State  |
| BLM Designated Mountain Plover Habitat |        |

San Juan  
Rio Arriba

Black S  
M



# Black Spring Mine Permit Area

Not Mined

Not Mined

Previously Mine Areas

Permit Boundaries

Active Mine - Current

Not Mined

0-3 ft

Powerline

Active Mine - April 2020-21

3-7 ft

Active Mine - July 2022

1-2 ft

BSM #25

BSM #19

BSM #4

BSM #5

BSM #6

BSM #7

BSM #11

BSM #12

BSM #13

BSM #24

BSM #14

BSM #23

BSM #22

BSM #21

BSM #20

BSM #19

BSM #18

BSM #17

BSM #16

BSM #15

# Mining and Other Environmental Permits

---

Operate within a Minimal Impact Mining Permit with the  
New Mexico Mining & Minerals Division

Financial Assurance[FA] for Disturbed Acreage

'Roll' FA to Next Disturbance Following Reclamation

---

Bureau of Land Management [Surface/Mineral]–

NEPA Compliance – Environmental, Biological and Cultural  
Resource Impacts Assessment

Mineral Rights/Receive Royalty Payments for Produced  
Humate

---

Stormwater Control/Monitoring/Reporting – National  
Pollution Discharge Elimination System/Multi-Sector General  
Permit / USEPA





# Mining to Product

---

Run of Mine – Hauled to Production Plant

Stockpiled at Mine Site then Hauled to Production Plant

Screened to Product Size

Coarser Material – “Granular”

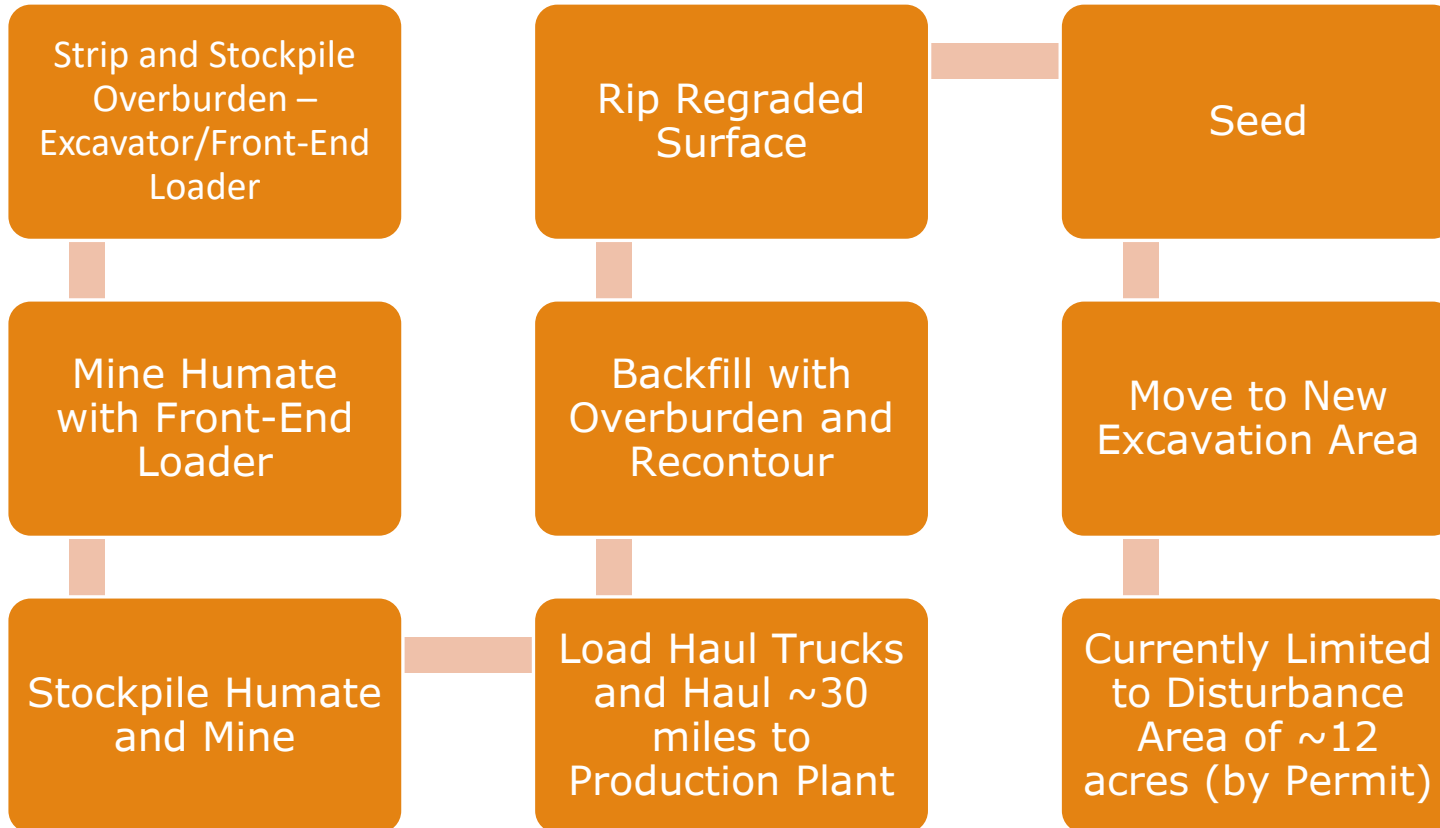
Fine/Soluble – Various Powdered Products

---

# Backfill, Recontour & Reseed with Reclamation

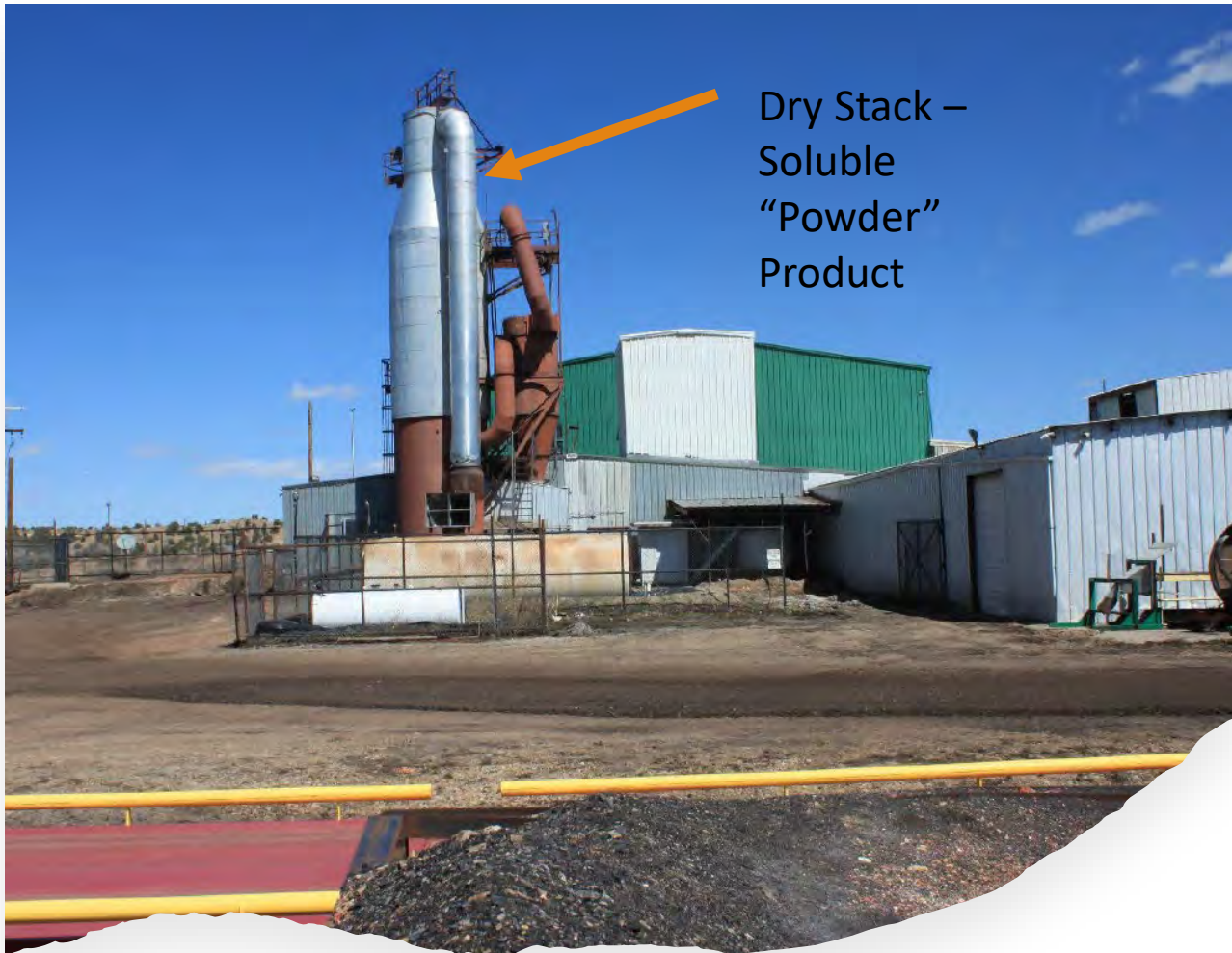
This was the “mine pit” on the last visit





# Mining and Concurrent Reclamation Sequencing





Dry Stack –  
Soluble  
“Powder”  
Product

# Production Plant

Water Soluble and Granular  
Products Produced



GrowPlex



SeaMate Fe



SeaMate

# Water Soluble Products

---

Enhances the availability and uptake of nutrients

Provides a unique freshwater carbon that stimulates soil microorganisms

Buffers salts and toxins in the soil

Minimizes plant stress

Addition of Seaweed & Fe Provide Additional Benefits to Soil & Plant Growth





Conveyors and Screens

---

# Production Plant

Granular Product Production

---

## Granular – Screened to 3 Size Fractions



Enhances the availability and uptake of nutrients

Improves soil structure

Stimulates soil microorganisms

Buffers toxins and salts in the soil

Minimizes plant stress

Increases water-holding capacity in soils



Production  
Plant  
Environmental  
Permits and  
Activities

---

Operation Mining Permit with Mining & Minerals Division of State with a Closure/Reclamation Plan and Financial Assurance

---

Some Unused Stockpile Material Hauled Back to Mine for Backfill

---

Discharge Elimination Plan Relative to Potential Groundwater Impacts with New Mexico Environment Department

---

Stormwater Control – NPDES MSGP Permit / USEPA

---

Air Quality Compliance – New Mexico Environment Department

# Production Plant Closeout Plan [2017]

---

Supports Financial Assurance Costs

Industrial and Wildlife Post-Mining Land Uses  
[PMLU]

Preserves Stormwater Controls

